

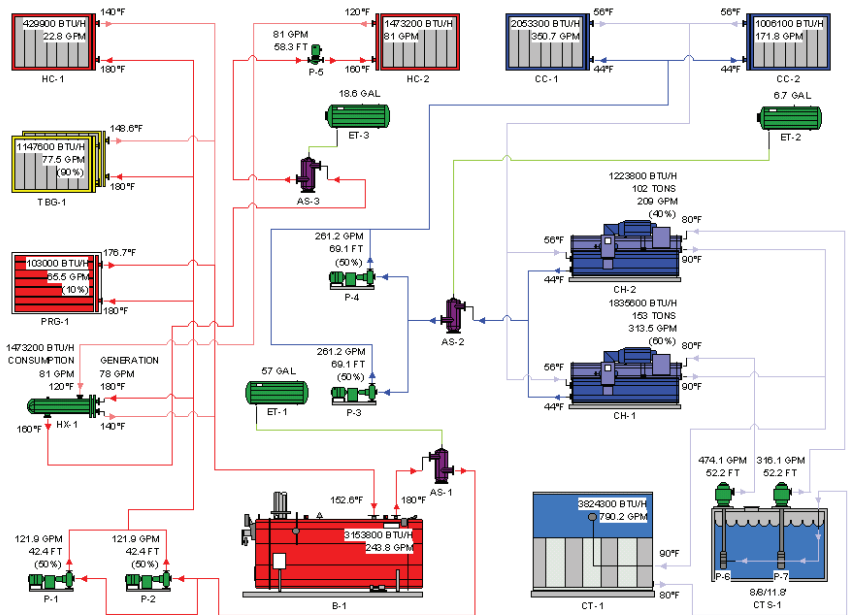
# HVAC Solution's Revit Connection Wins Innovation Award for Software

**Salt Lake City, UT - HVAC Solution Pro** has made a leap to the future with its new import capabilities with Revit.

HVAC Solution Pro allows you to drag and drop super-intelligent objects to design air systems including both air handlers and rooftop units. It provides you with the tools to design complex hydronic, steam and plumbing systems, along with your control schematics.

The software includes all the necessary piping, ductwork and plumbing components to model most systems with unparalleled flexibility. Top this off with the capability to select equipment, export calculation reports, equipment schedules, schematics in .dxf format, an electrical coordination matrix and a bill of materials.

NAME:  
LOCATION:



## Engineers at Van Boerum & Frank Associates, Inc. Use HVAC Solution and Revit to Design State-of-the-Art Facilities

**Rome, Italy Temple - Rome, Italy** Ben Davis, a licensed P.E., led the design team for the new Rome Italy Temple Complex for the Church of Jesus Christ of Latter-day Saints. The complex consists of the temple, patron housing building, visitor center, meetinghouse and support facilities. It serves as a place for church members in Italy to gather and worship God and learn of the faith.

The Rome Temple Complex uses several technologies aimed at achieving energy independence and reducing the site's carbon footprint. Ben Davis and his design team used HVAC Solution software to size and select equipment for these complex systems. They include thermal generation, chilled water, and boiler heating water that serve the entire campus. HVAC Solution was also used to size equipment, ductwork and hydronic piping for each building.



Ben Davis, P.E.



Rome, Italy Temple Complex



VAN BOERUM  
& FRANK ASSOCIATES, INC.  
CONSULTING ENGINEERS

**40**  
year anniversary

Occasionally design changes have required verification of selected equipment. Some of these changes have been campus-wide while others have been localized to specific buildings. HVAC Solution has made it easier to adapt to these changes by making it faster to check equipment selections and system configurations. This has resulted in faster turn-around times and allowing for increased productivity.

[www.hvacsolution.com](http://www.hvacsolution.com)

# The 2014 AHR Expo Innovation Award

The Innovation award recognizes products that best help HVAC&R practitioners provide safer, healthier, more efficient and/or more comfortable environments. The annual competition is sponsored by ASHRAE, the Air-Conditioning, Heating, and Refrigeration Institute (AHRI) and the International Exposition Company (IEC).

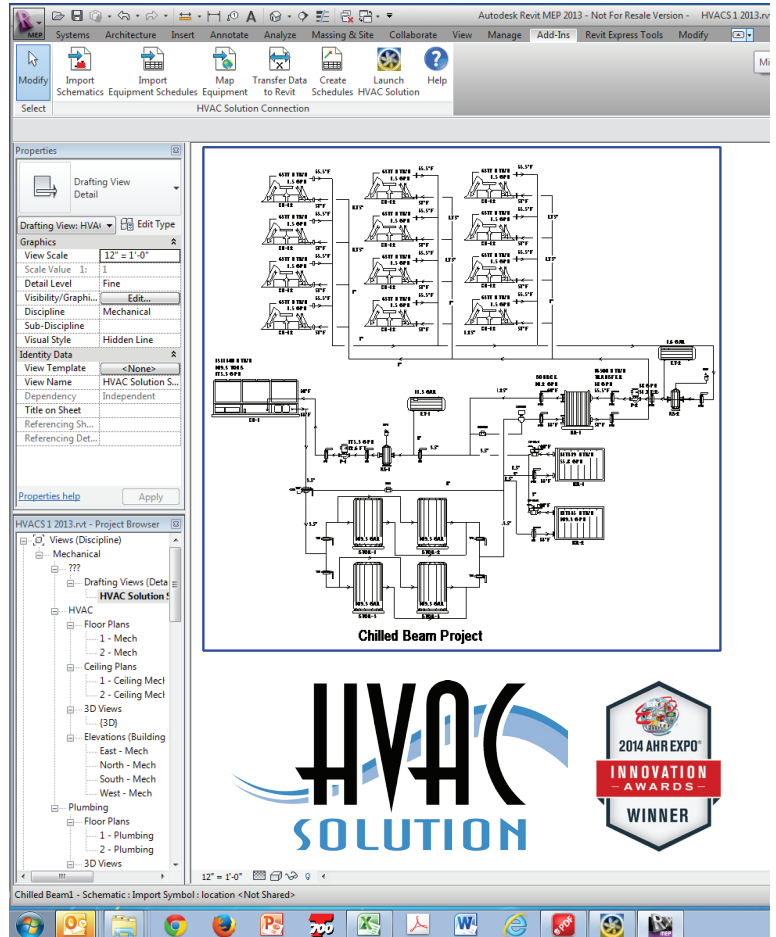
Revit/HVAC Solution Connection is a schematic simulation tool that can be used to determine and size many of the HVAC components that will be used in your Revit projects. It can also serve as a guide to help you connect your Revit objects in the right order.

You can start off your project by choosing our Windows-based drag-and-drop technology to lay out your project or you can begin by importing your Trane Trace Loads file and using one of our numerous design wizards!

Answer our questions and build all your air, hydronic hot and chilled water, steam, plumbing and control systems. Our intelligent objects and systems allow you to run "what if" scenarios and perform all the necessary HVAC system calculations.

Once systems are created and calculated you then automatically select equipment from many of the equipment manufacturers in the HVAC industry. Now that all the equipment capacities have been determined the schedules and schematics can be imported into Revit using the new Revit/HVAC Solution Connection feature.

The design data can also be transferred to shared parameters in an instance of a linked Revit object.



**HVAC SOLUTION**



J. Howard Van Boerum, P.E.



Jeffrey S Watkins, P.E.



Huntsman Cancer Institute

## WHERE TO BUY

[www.hvacsolution.com](http://www.hvacsolution.com)  
telephone 800-831-0322

<u>HVAC Solution with Revit Connection</u>	
Single User	\$2,000
Multiple User, 1 User	\$2,500

Design and equipment changes were improved with HVAC Solution's Revit Connection and the ability to download Revit Families for the HVAC systems. This saved valuable time which then translated into higher profitability. Downloading the Revit families for the equipment so quickly meant they were able to spend more time within Revit modeling the mechanical distribution systems for the facility.

**Huntsman Cancer Institute, Phase IV** - consists of a 220,000 sf, seven-story research tower. Construction has begun and completion is scheduled for spring 2016. Howard Van Boerum and Jeff Watkins led VBFA's design team and used HVAC Solution extensively in the design of this complex project allowing for quick resizing of the air handler fans, boilers, chillers, pumps and other specialties.

The Huntsman Cancer Institute serves and will continue to serve the needs of patients and research throughout the world comfortably, thanks to VBFA, HVAC Solution software and the Revit Connection.