

Walk-in Slide: AU 2014 Social Media Feed

1. Click on the link below, this will open your web browser

<http://aucache.autodesk.com/social/visualization.html>

2. Use “Extended Display” to project the website on screen if you plan to work on your computer. Use “Duplicate” to display same image on screen and computer.

Migration to Vault Software for Managing and Tracking Documents Internally and for Contractors UT7199-P

Gathen Garcia, PNM

Manager, Drafting & Geographic Information systems



Migration to Vault Software for Managing and Tracking Documents Internally and for Contractors

UT7199-P

Stacy Schnell, TNMP
CAD Production Leader



Key learning objectives

At the end of this class, you will be able to:

- Discover data management lessons learned
- Learn about data management support for external contractor/vendor
- Learn data management effective practices for Vault software configurations
- Discover data management business process rules for lifecycle and categories

Who we are

About PNM

Is New Mexico's largest electricity provider, PNM serves more than 500,000 New Mexico residential and business customers in Greater Albuquerque, Rio Rancho, Los Lunas and Belen, Santa Fe, Las Vegas, Alamogordo, Ruidoso, Silver City, Deming, Bayard, Lordsburg and Clayton. We also serve the New Mexico tribal communities of the Tesuque, Cochiti, Santo Domingo, San Felipe, Santa Ana, Sandia, Isleta and Laguna Pueblos.

PNM was founded in 1917 as the Albuquerque Gas and Electric Co. and has undergone several transformations, including name changes, in its history. The company sold its natural gas utility to New Mexico Gas Company in 2009. PNM is one of two subsidiaries of PNM Resources, an investor-owned energy holding company also based in Albuquerque.

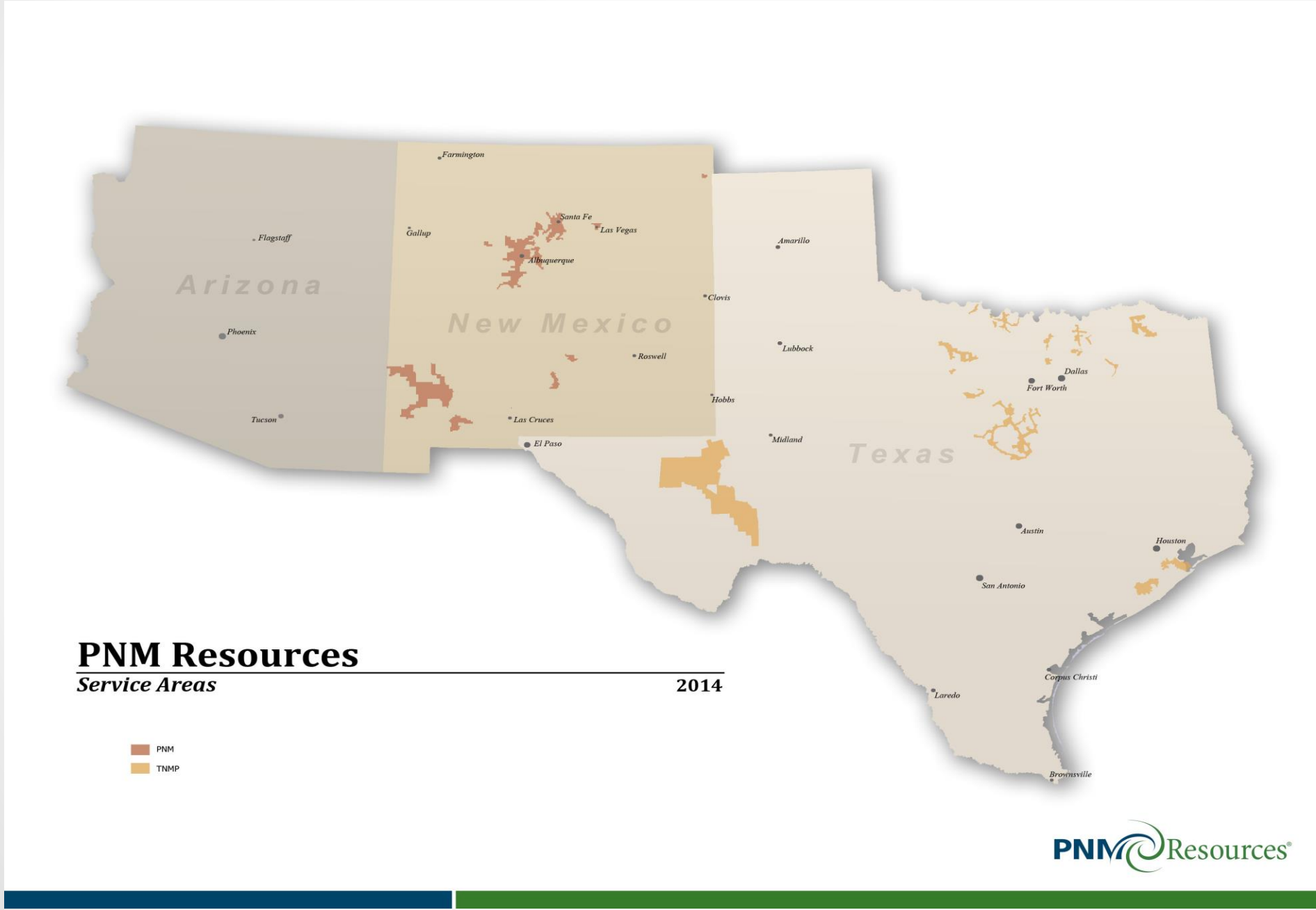


About TNMP

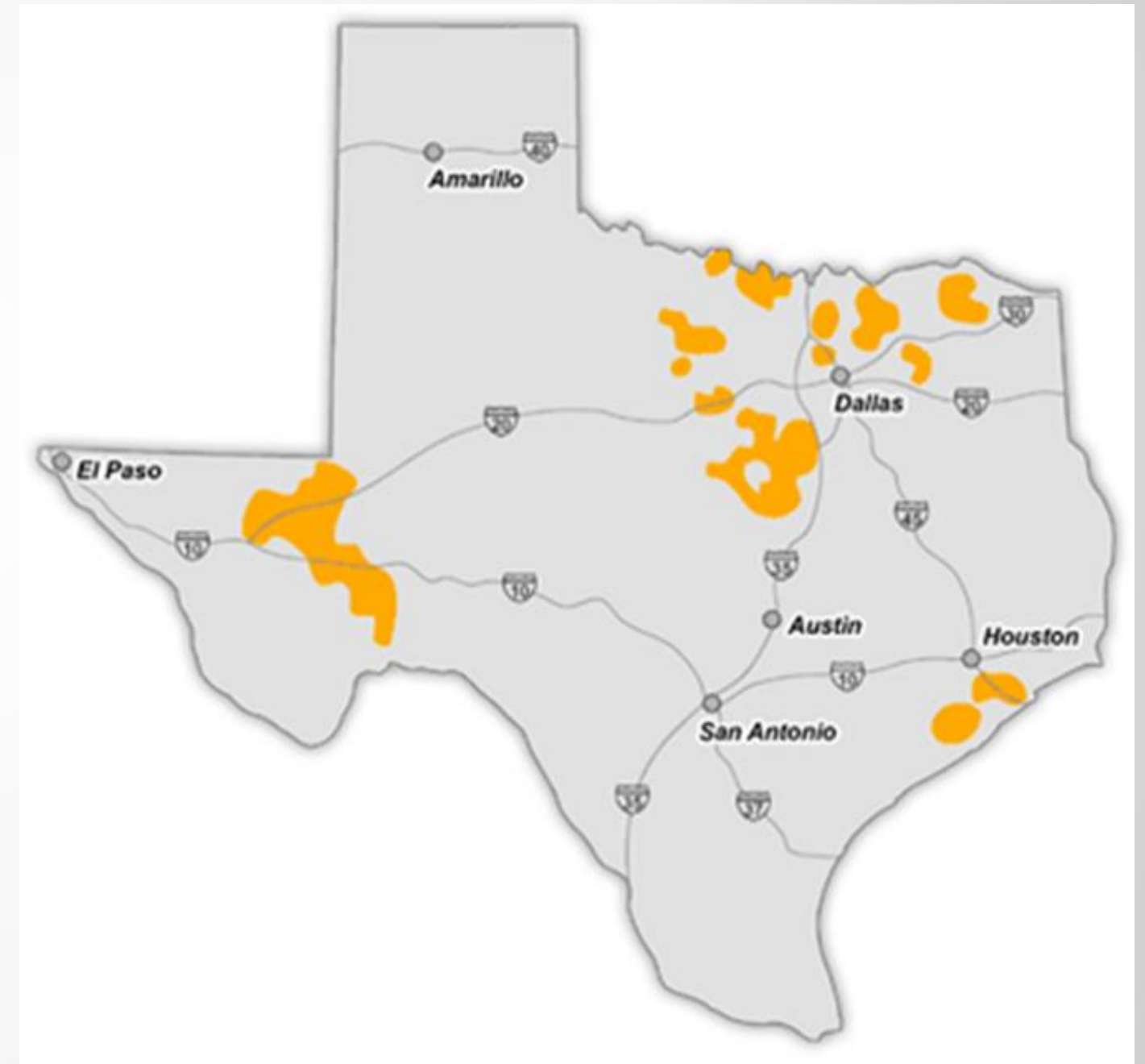
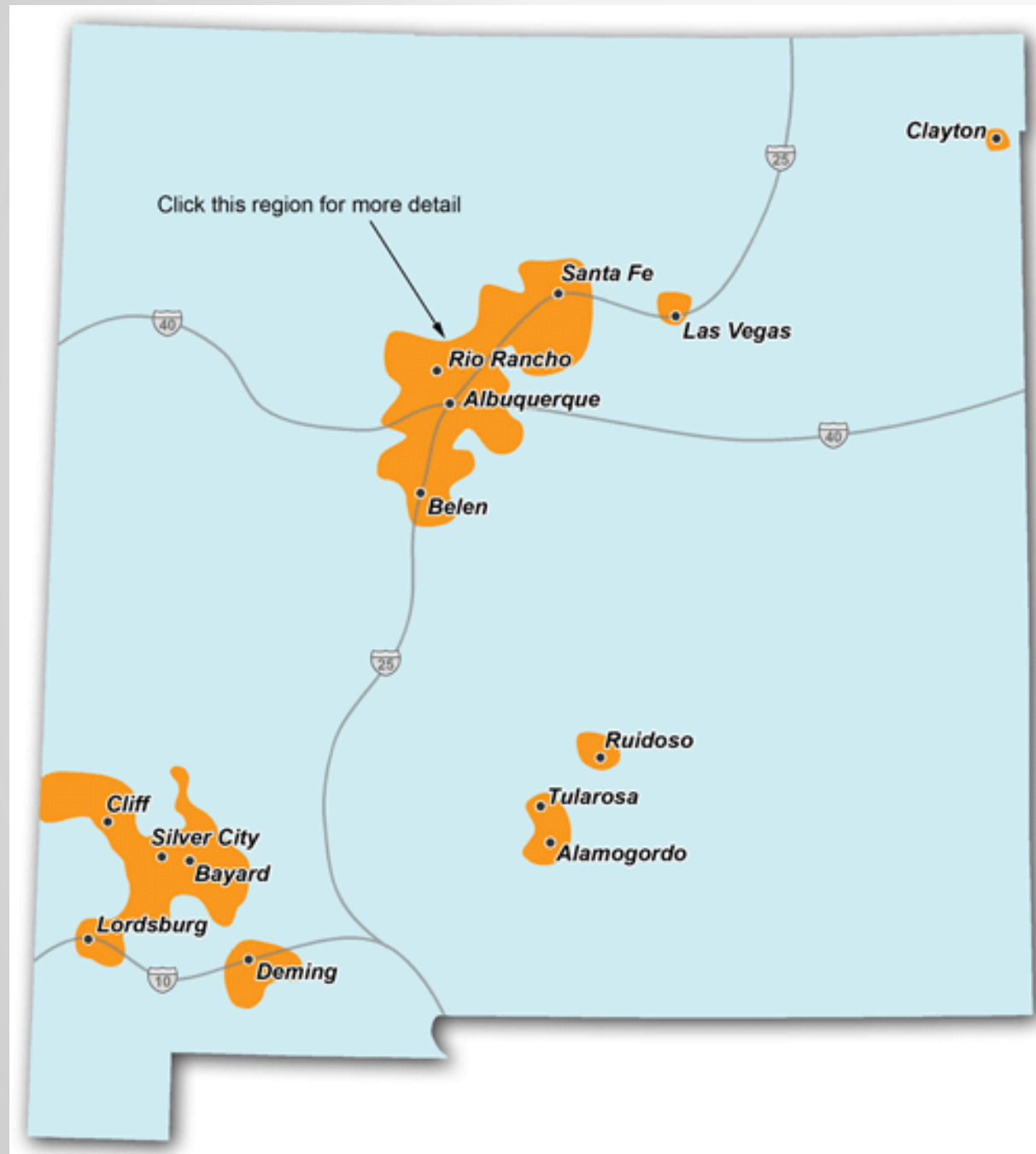
TNMP is an electricity transmission and distribution service provider serving more than 20 communities throughout Texas. Main office is located in Lewisville, Texas. TNMP serves more than 500,000 Texas residential and business customers. Service territories include the Gulf Coast Region, West Texas, Central Texas, North Texas and Lewisville area.



Distribution Service Areas for PNM & TNMP

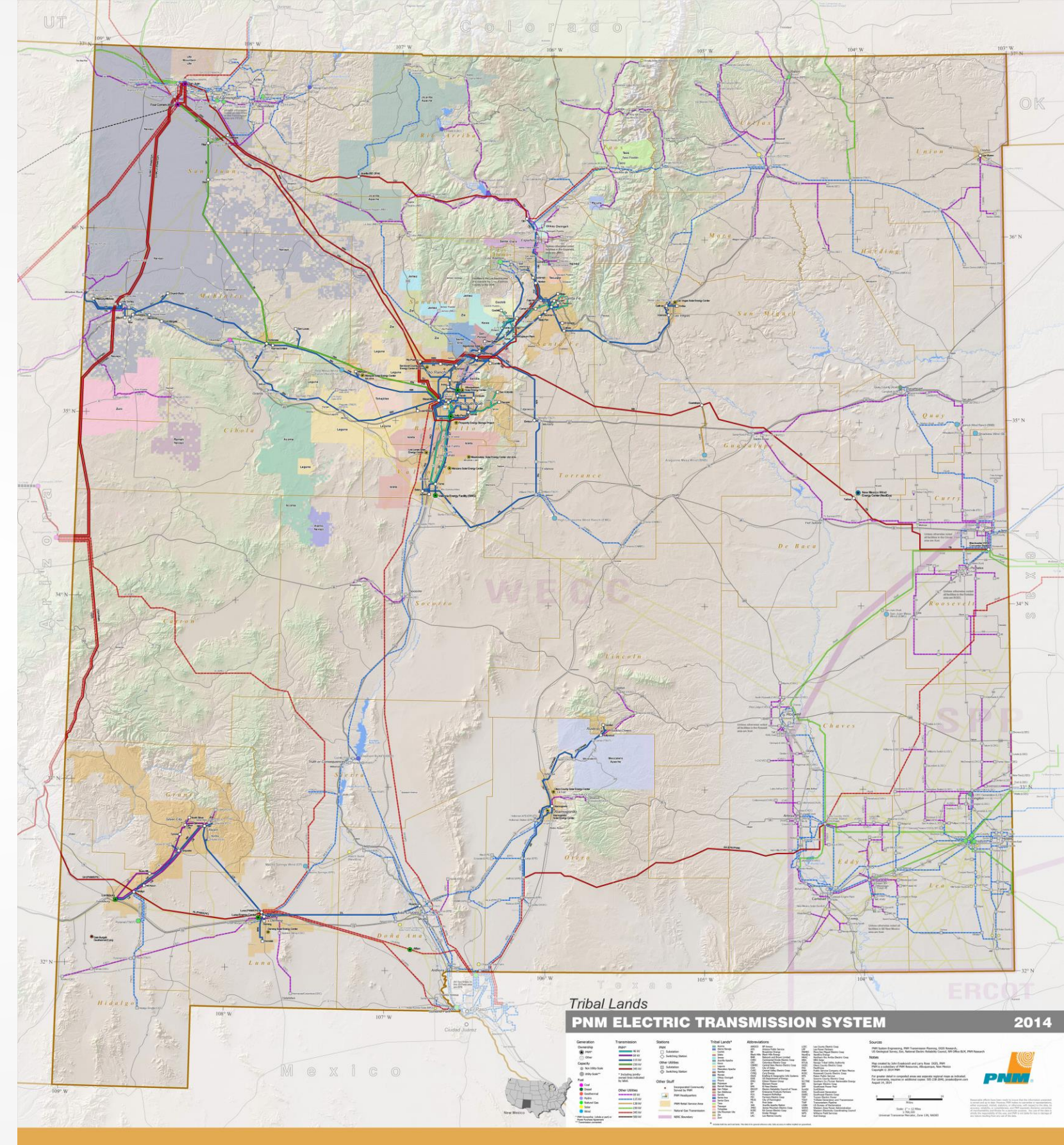


Distribution Service Areas for PNM & TNMP

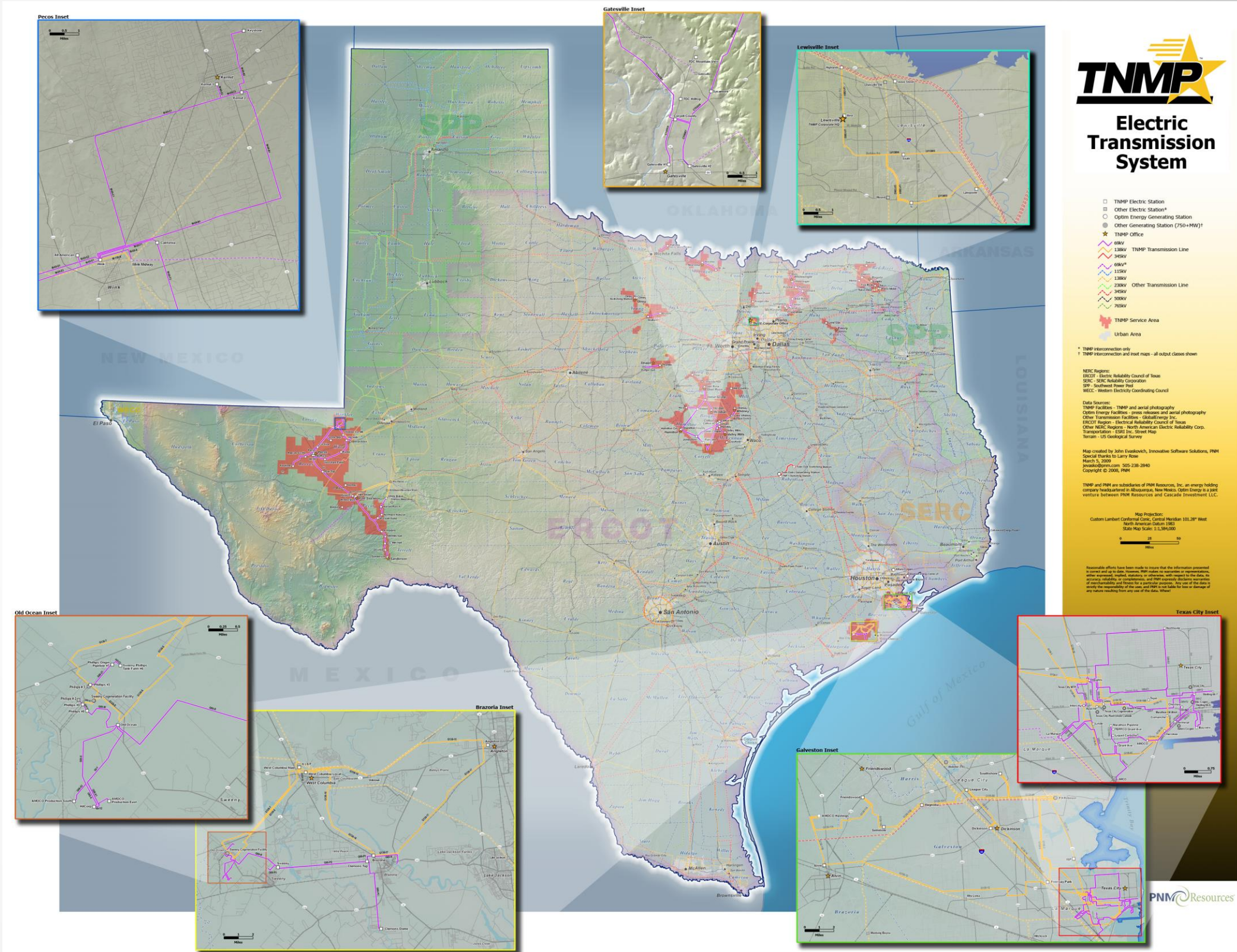


PNM Transmission System

Consists of 3000 miles of transmission lines across the state of New Mexico.



TNMP Transmission System

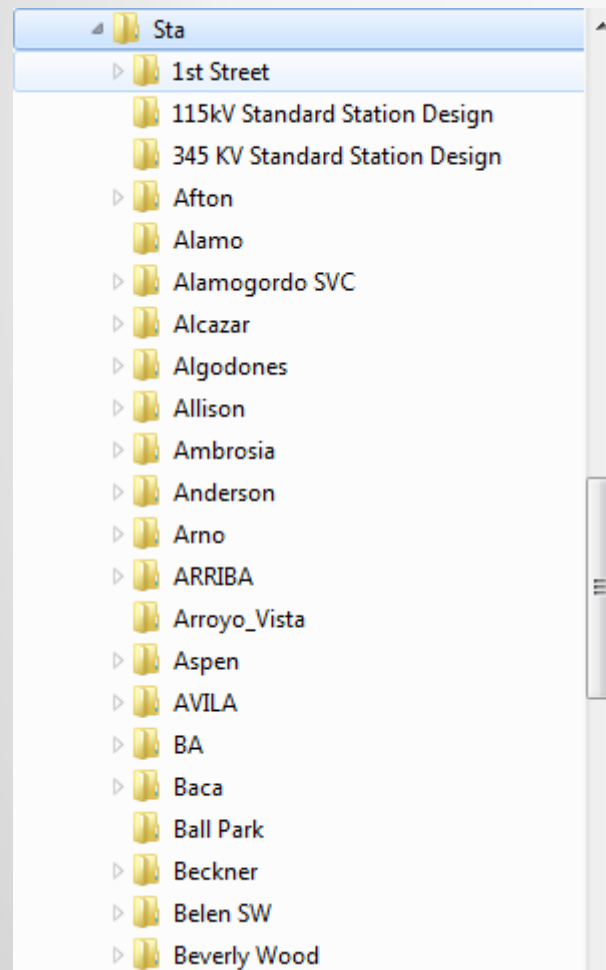


Why Vault

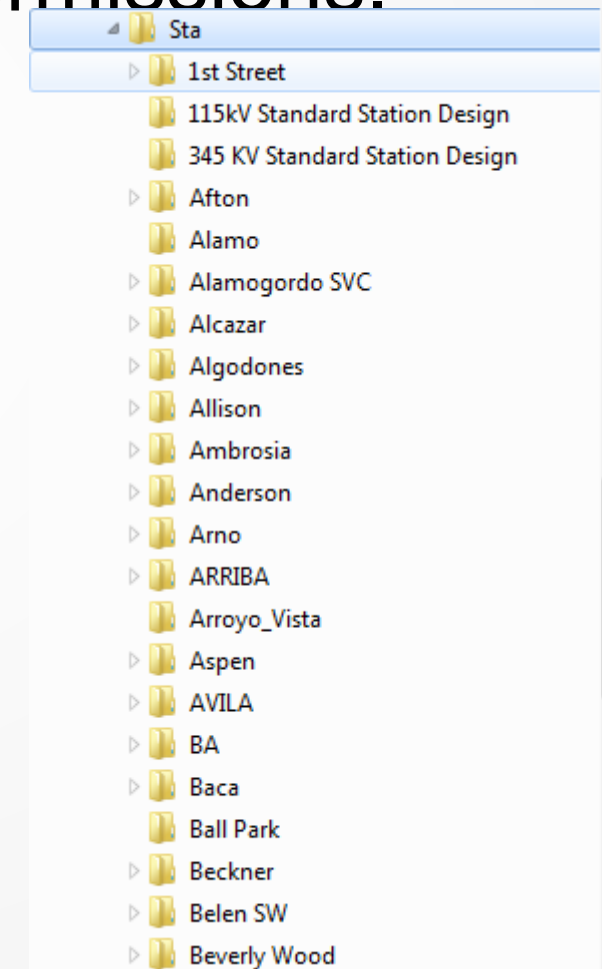
- Working with outside contractors
- Internal knowledge being lost
- New Engineers & Cad technicians unfamiliar with old network file system

PNM & Generation System Prior to Vault

- Working directory was set for all engineers, designers & cad technicians to have write permissions.



- Org directory was set for only select engineers, designers & cad technicians to have write permissions.



PNM System prior to Vault

- Custom lisp routines that managed completed/approved drawings from the working directories to the Org directories by discipline.
- Published complete/approved drawings to Drawbase by discipline.
- Managed both vector and raster drawings.
- No hybrid drawings created
- Both for PNM and Generation

Drawing file assessment

- Electronic drawings for PNM and Generation dated back to 1983. These drawings were in Autocad 2.x dwg format
- Tiff drawings dated back to 1990
- Electronic drawings for TNMP dated back to 1992 and were created in Generic CAD. Moved to AutoCAD release 11 in 1993.
- Tiff drawings dated back to 1992

Drawing file assessment continued

- TNMP: CAD - 35,890, Tiff – 3,357
- PNM: CAD - 62,758, Tiff – 16,904
- SJP: CAD - 8,028, Tiff – 65,380
- Total: CAD & Tiff files imported - 192,317
- These were drawings that resided in the ORG directories.
- WRK directories consisted of on-going projects

Existing CAD Users

These are folks that primarily work cad designs on a regular basis.

- TNMP: 12 Engineers, Cad leader and 3 Cad technicians
- PNM: 25 Engineers, 3 Land Services, 2 Standards, 3 Cad technicians
- SJP: 5 Engineers, 1 Cad technician

Implementation of Vault

Four easy steps

For the import process, VB scripts were used to do a few things to get the data ready to import.

1. Delete by extension – this was crucial for cleaning trash out of directories and only importing the file types we wanted. Files included bak, exe, log, shp, mnu, bat, dmp, lst, db, and other non-CAD extensions.
2. We then used the built in Vault Autoloader to generate lists of files too old to be imported into Vault. Those lists were fed into another VB script that accessed the Core Console to change the version and re-save.

Four easy steps continued

For the import process, VB scripts were used to do a few things to get the data ready to import.

3. Repeat step 2 to find the corrupt CAD files and generate a list. That list was also fed into the Core Console to attempt to clean the file. On files that failed, manual AutoCAD cleaning was required.
4. Once all files were up to date and viable, they were imported in batches to Vault. Vault applied category rules and lifecycle states to files as they were uploaded. The final uploading took ~ 168 hours of work accomplished by two workers over one week.

Current Vault files

- 320,365 files in Vault file store
- 3.03 average versions
- Largest version: 78
- File Store Size: 65 GB
- Database size: 3.3 GB

Session Feedback

- Via the Survey Stations, email or mobile device
- AU 2014 passes given out each day!
- Best to do it right after the session
- Instructors see results in real-time







Students, educators, and schools now have

FREE access to Autodesk design software & apps.

Download at www.autodesk.com/education



Earn your professional Autodesk Certification at AU

Visit the [AU Certification Lab](#)