

The background features a complex, organic, gray mesh-like structure that resembles a 3D model of a lattice or a biological form. A solid blue horizontal band runs across the middle of the image, serving as a backdrop for the title and speaker information.

Utilize Vault & Cloud to address Your Collaboration Challenges

Younes Yammouri
Sr. Product Manager

Senthil Kumar
Product Manager

Class Summary

Collaboration with customers and partners is increasingly critical for many businesses. Engineering teams need to collect feedback from customers early in the development cycle and work with partners to outsource manufacturing or other processes. In this class, we'll look at how you can rely on Vault data management software to manage your engineering data and processes together with the cloud for collaboration with outside customers and partners.

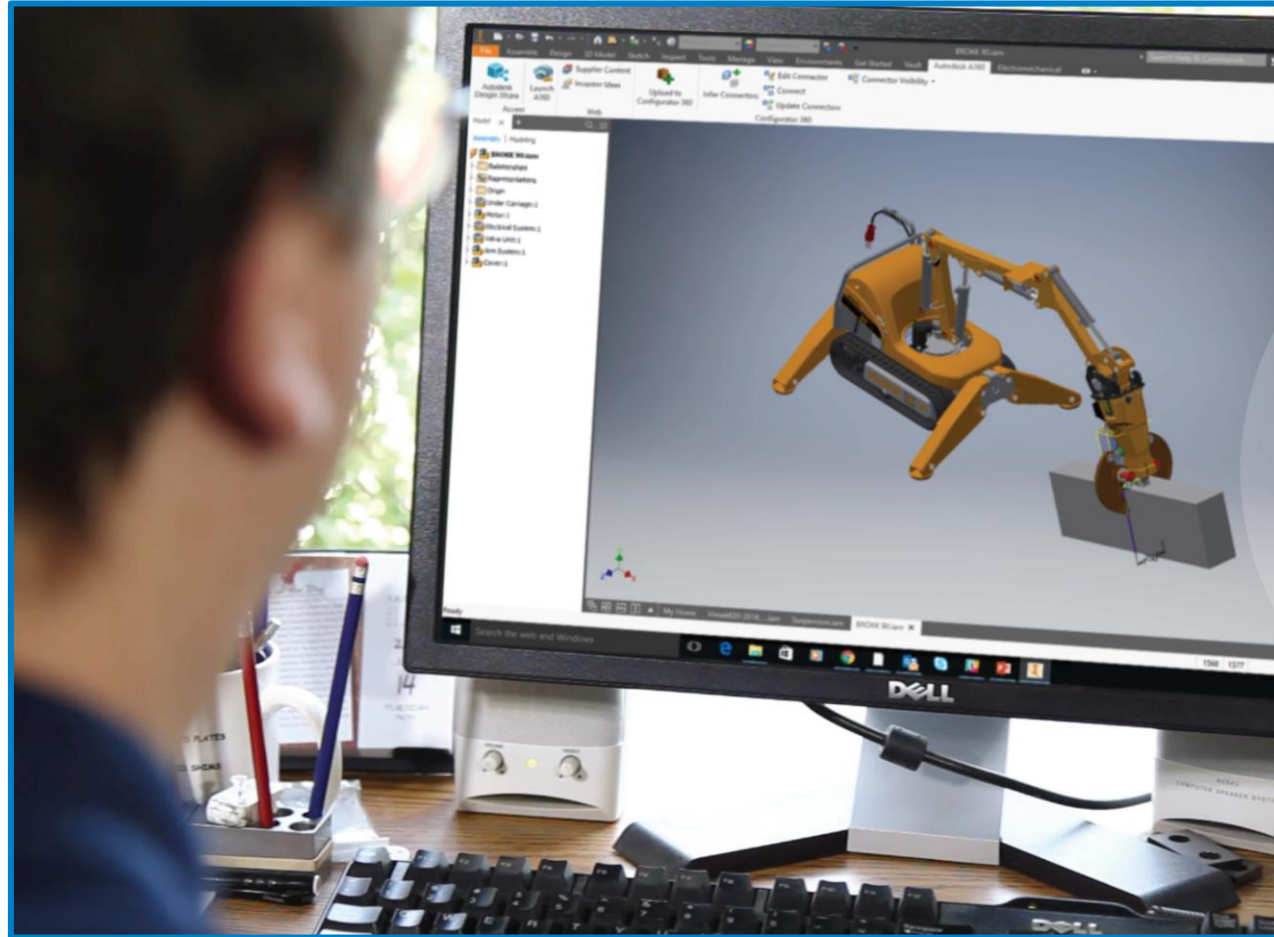
Objectives & Agenda

- How to better collaborate with your customers to collect feedback during design review cycle
- Explore new ways to share data with your manufacturing suppliers
- Learn how to set up your environment to be ready for collaboration with customers and manufacturing suppliers
- Q & A

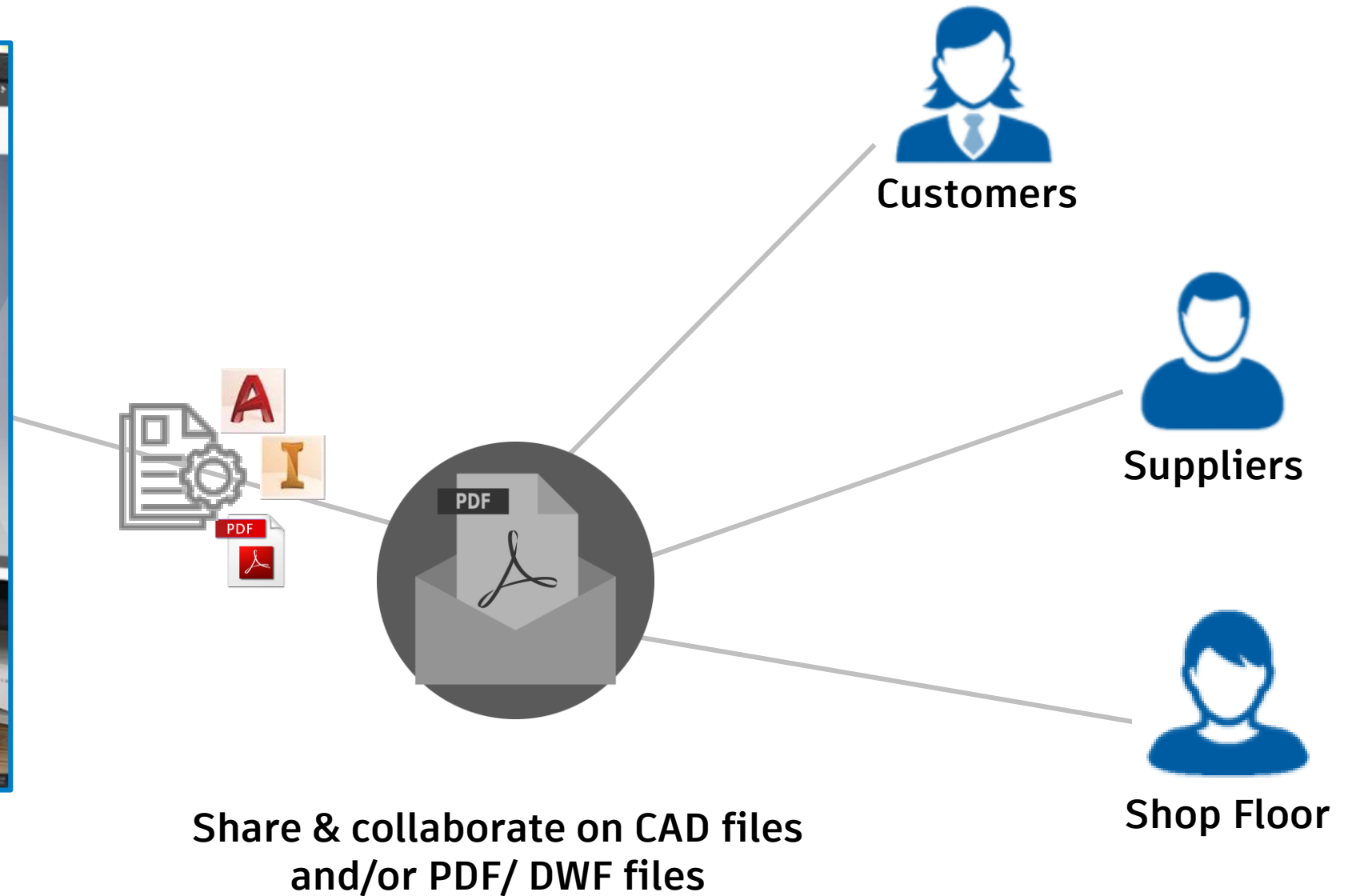
The background of the slide features a complex, abstract wireframe pattern. This pattern consists of numerous interconnected lines forming a mesh of irregular polygons, creating a three-dimensional, organic structure that resembles a network or a series of flowing, interconnected tubes. The lines are thin and light gray. A solid blue horizontal bar spans the bottom portion of the image, providing a contrasting background for the white text.

Shared Views – Collect feedback from customers early in the development cycle

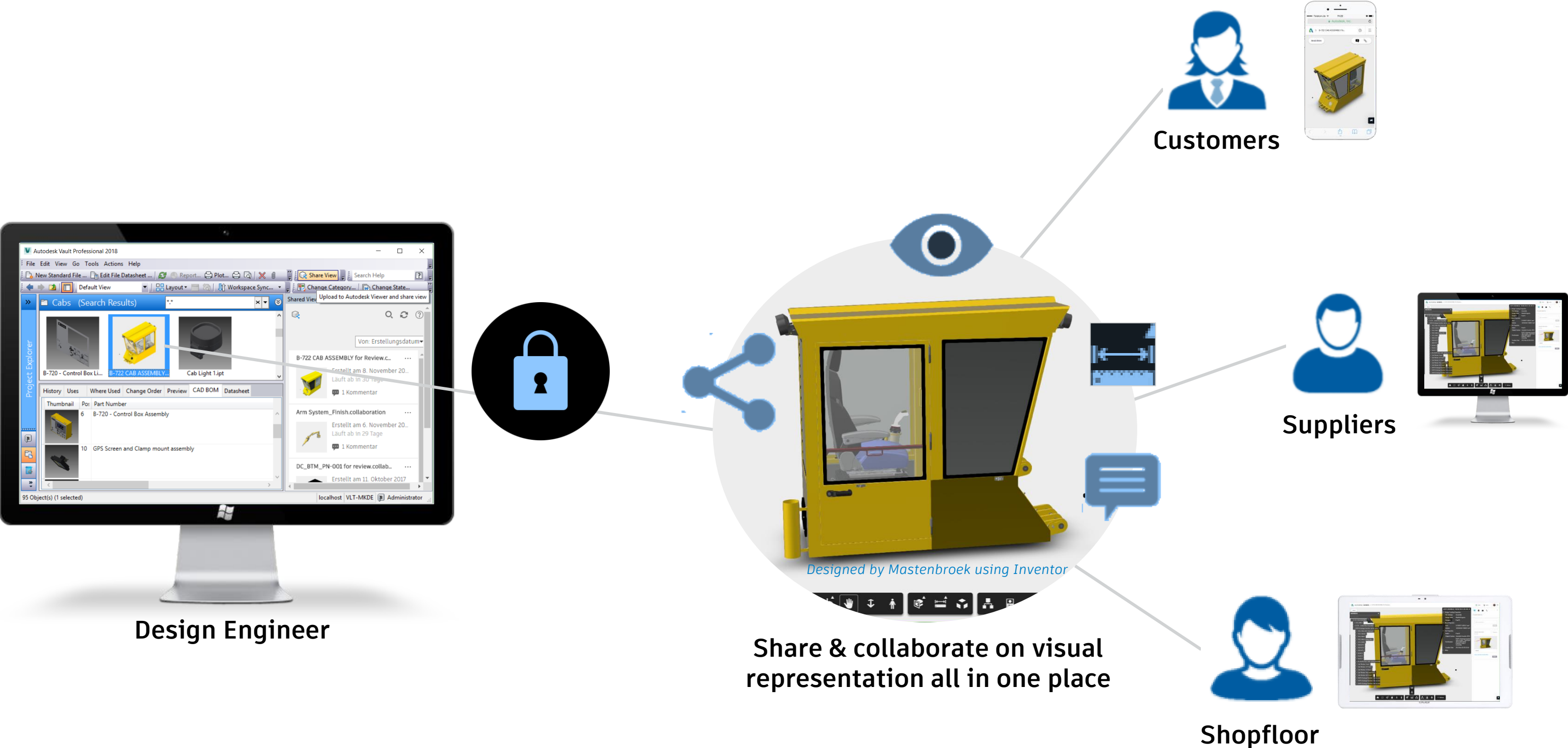
Get feedback on Work in Process – Challenge



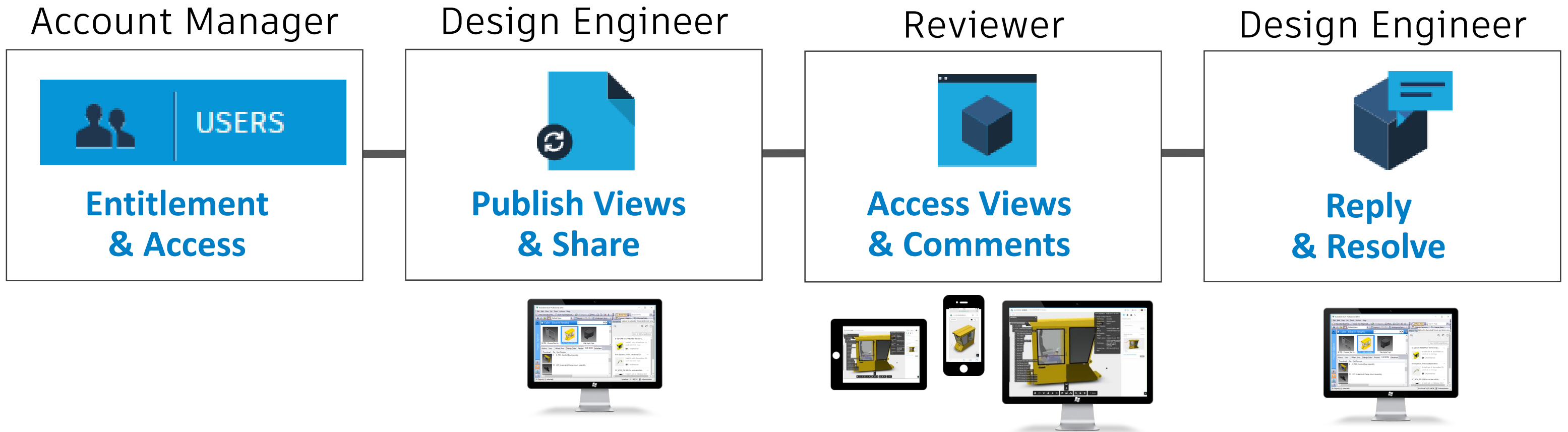
Design Engineer



Simplify and Speed up Review Cycles

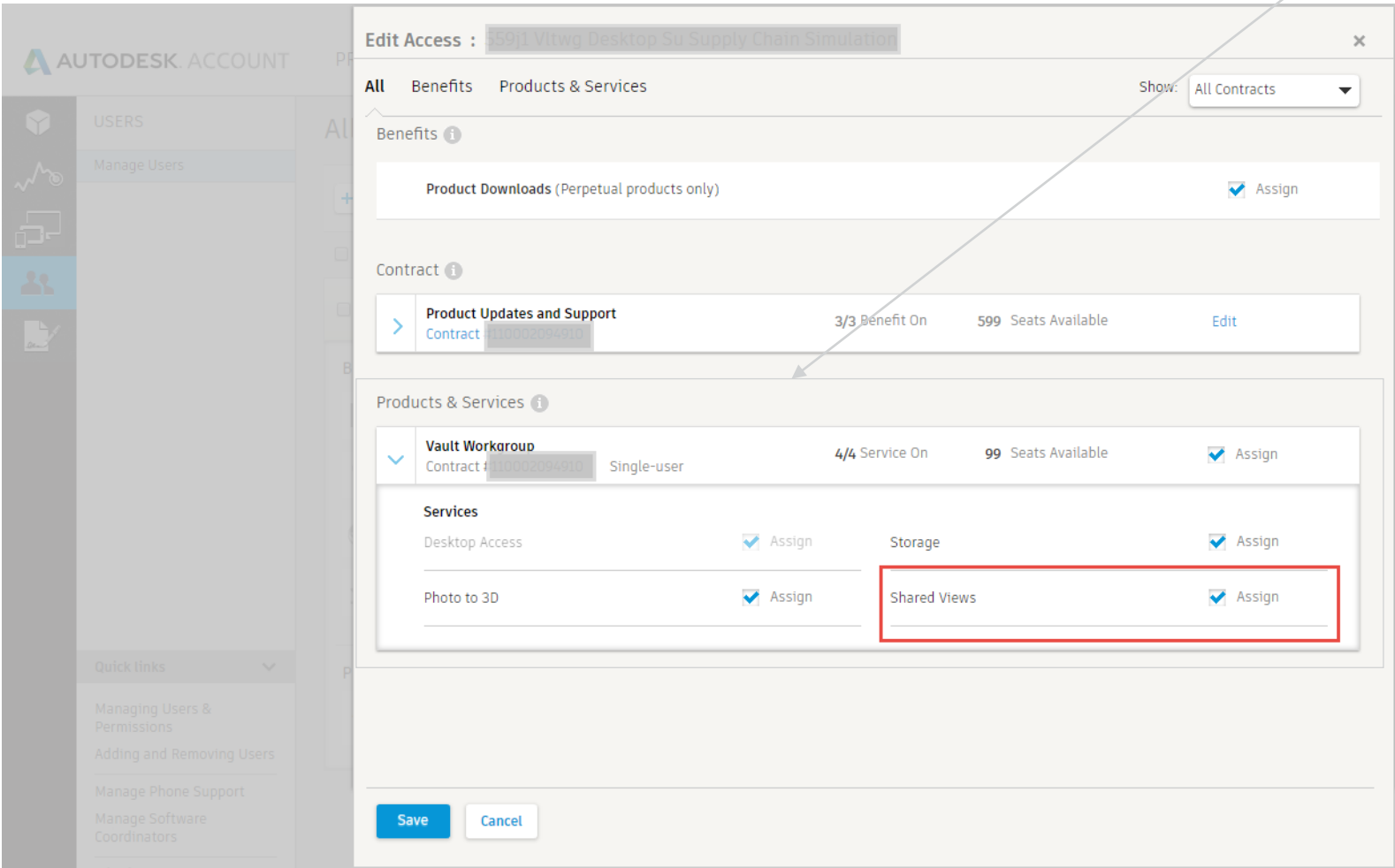
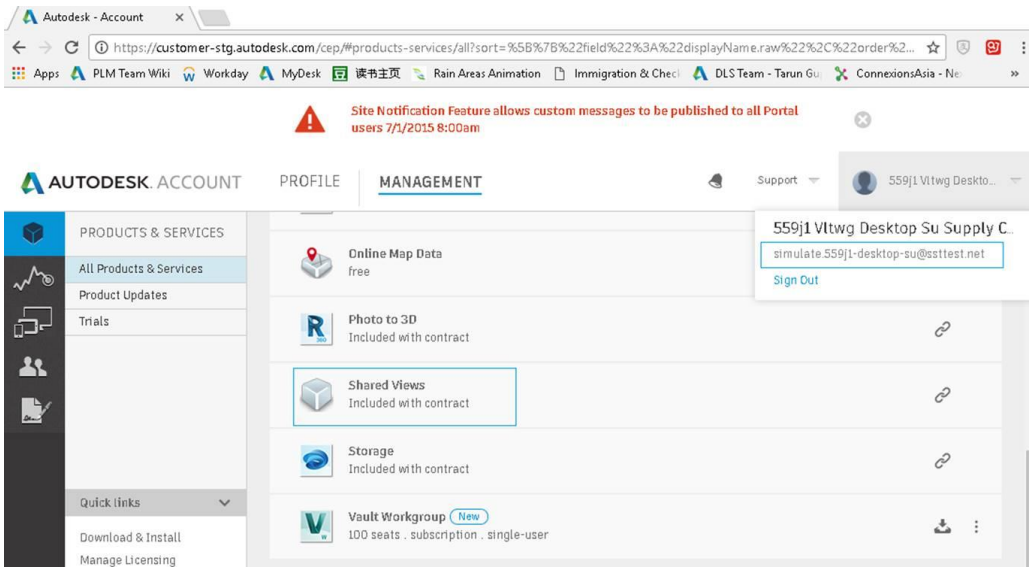


Shared Views - Workflow

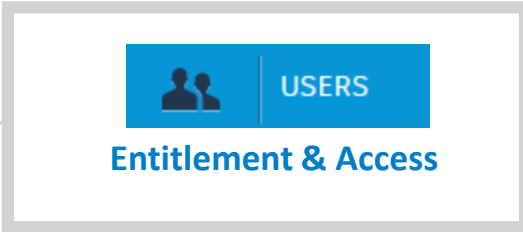


Shared Views - Services Access & Entitlment

Accessible to Vault Workgroup & Professional Subscribers



Entitlement & Admin control



Entitlement & Access



Publish Views & Share



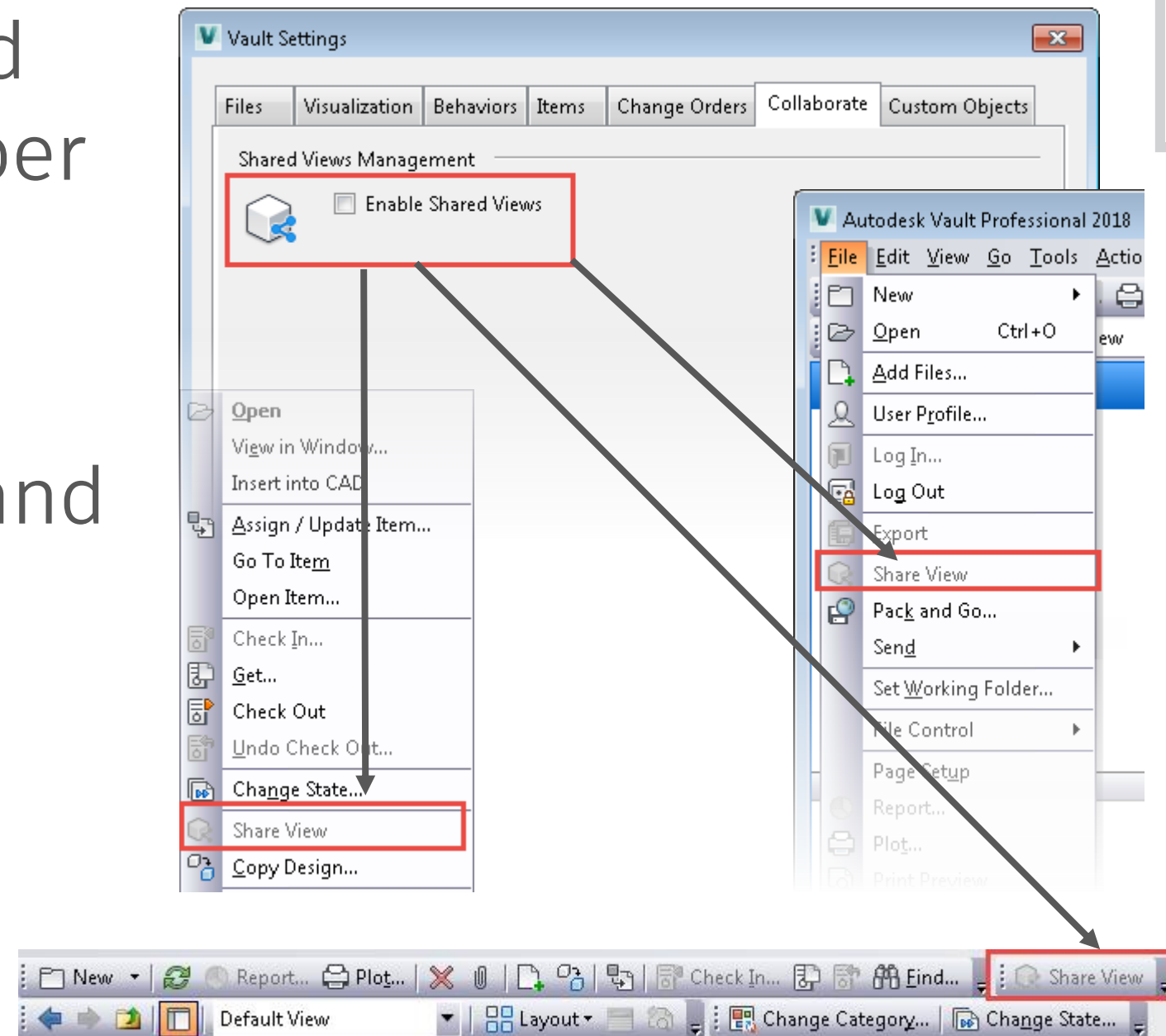
Access Views & Comment



Reply & Resolve

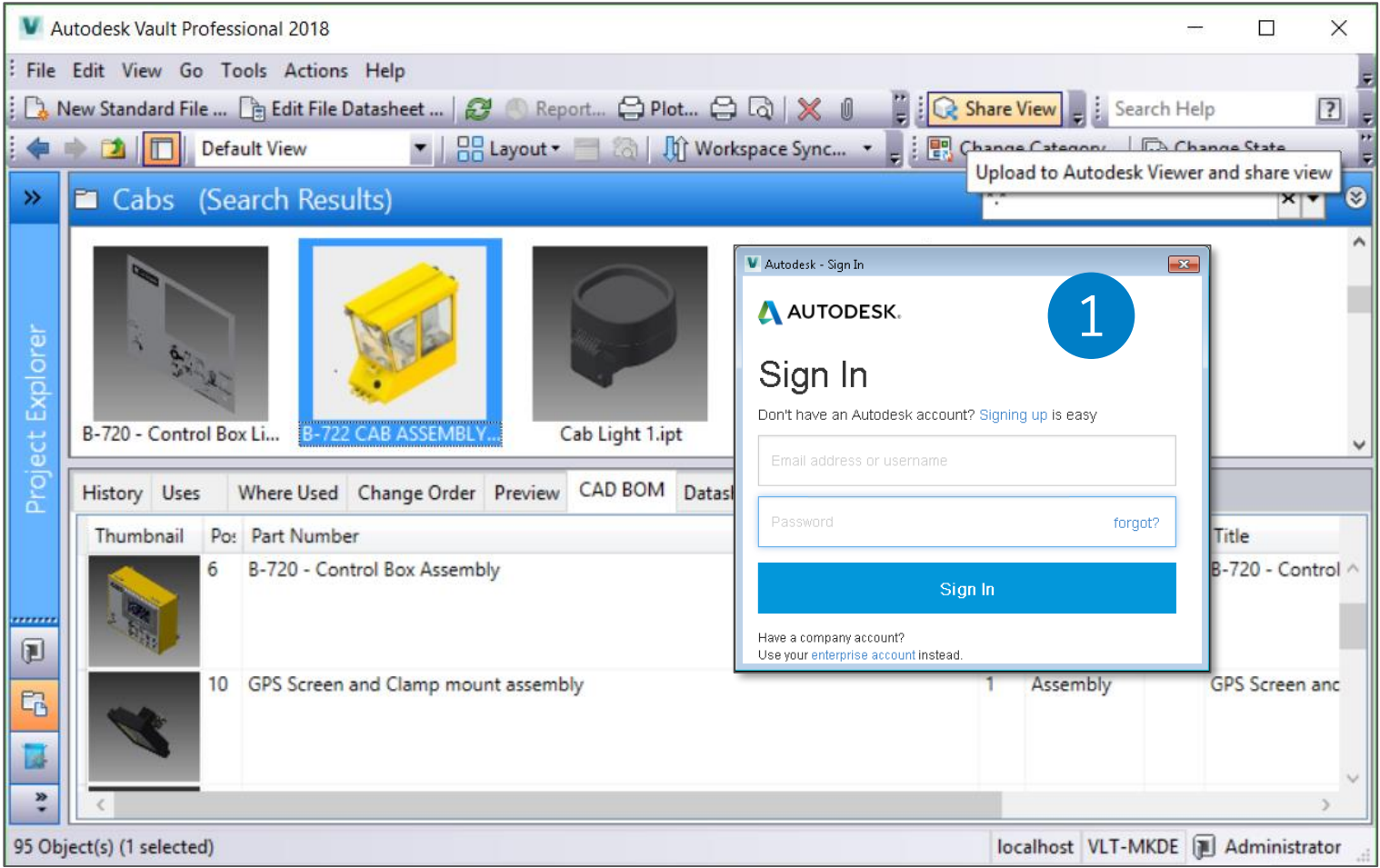
Admin Control to Access Shared Views Capabilities

- Administrator control Shared Views availability (Enabled per default)
- User access Shared Views through File menu, Toolbar and context menu

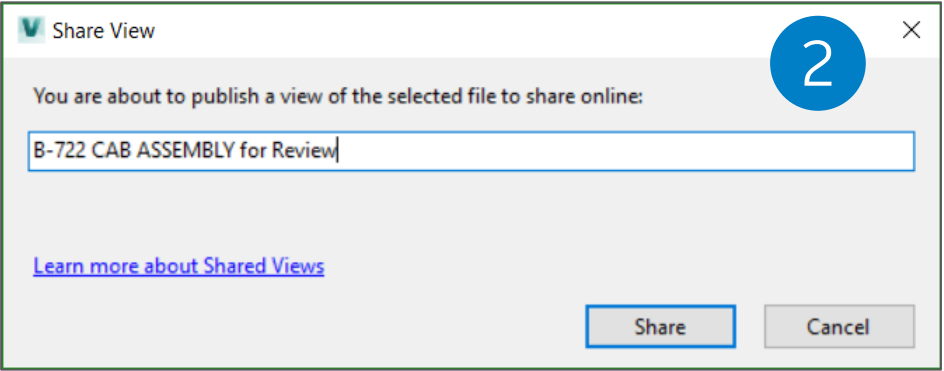


Vault Shared Views Capability require to install Vault 2018.1 Update

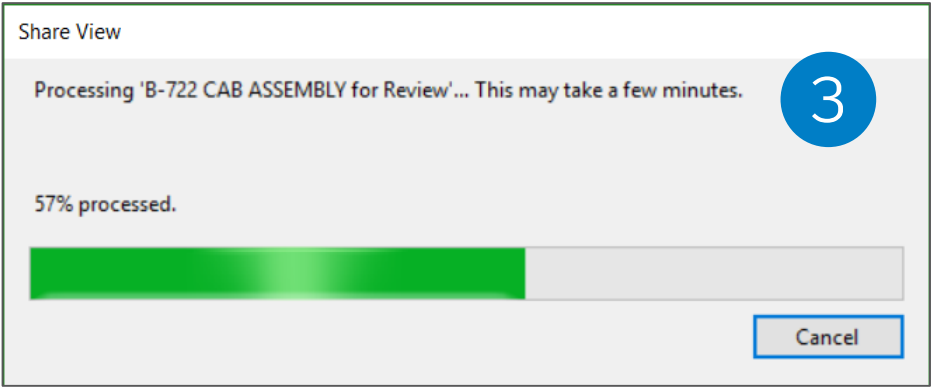
Publish Shared View



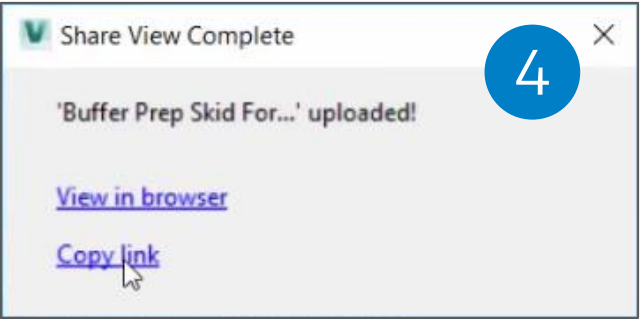
Single Sign On with Autodesk User ID



Name the View



Views are created locally and uploaded to Autodesk Viewer



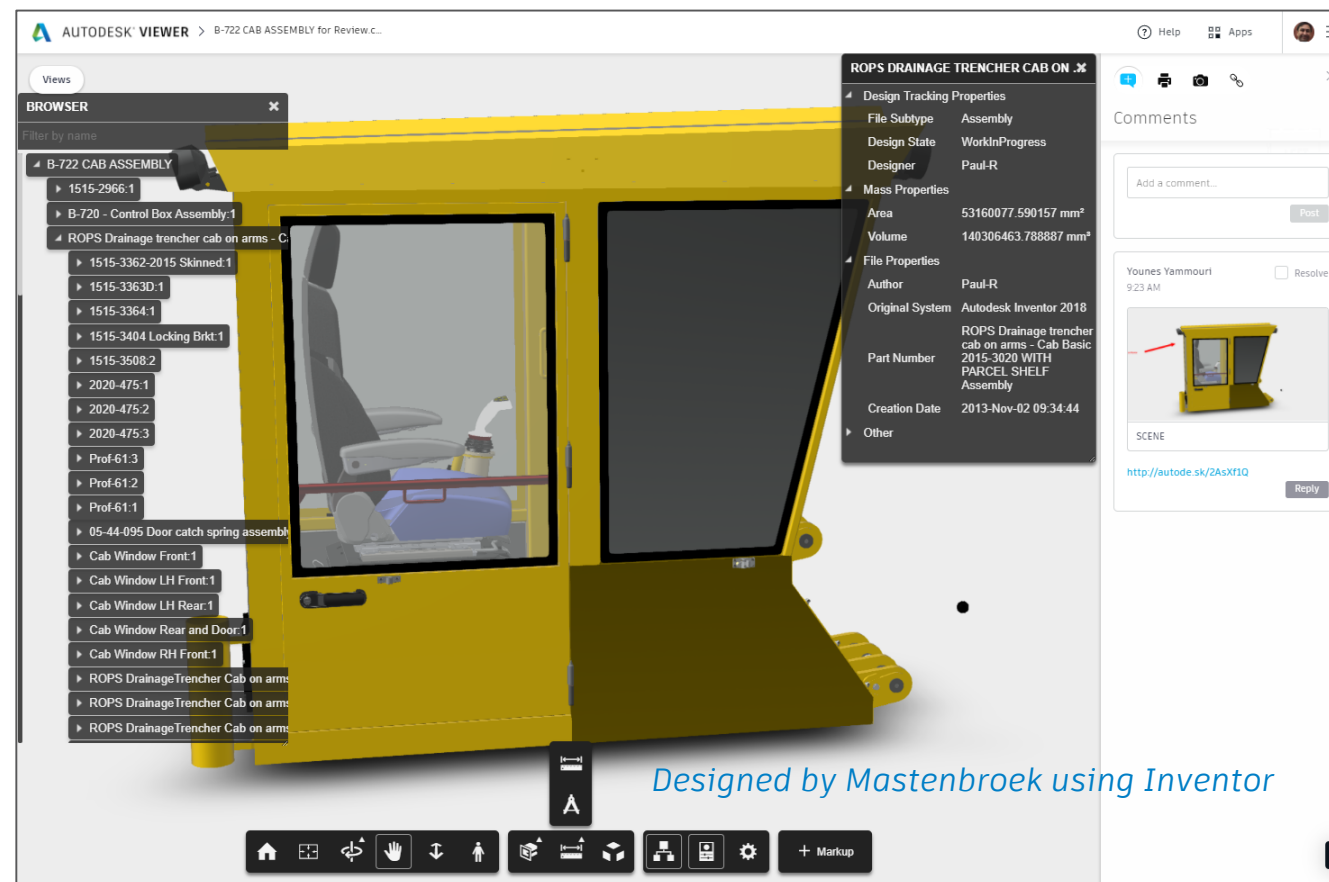
Copy Link to share with external collaborator



Reviewer Access & Comment

- Reviewer access viewable in Autodesk Viewer
- At Any devices
- In the office or on the road
- No need to install any additional viewers

Model Browser, Properties



View Explode, Zoom in,
measure, walk through



USERS

Entitlement & Access



Publish Views & Share



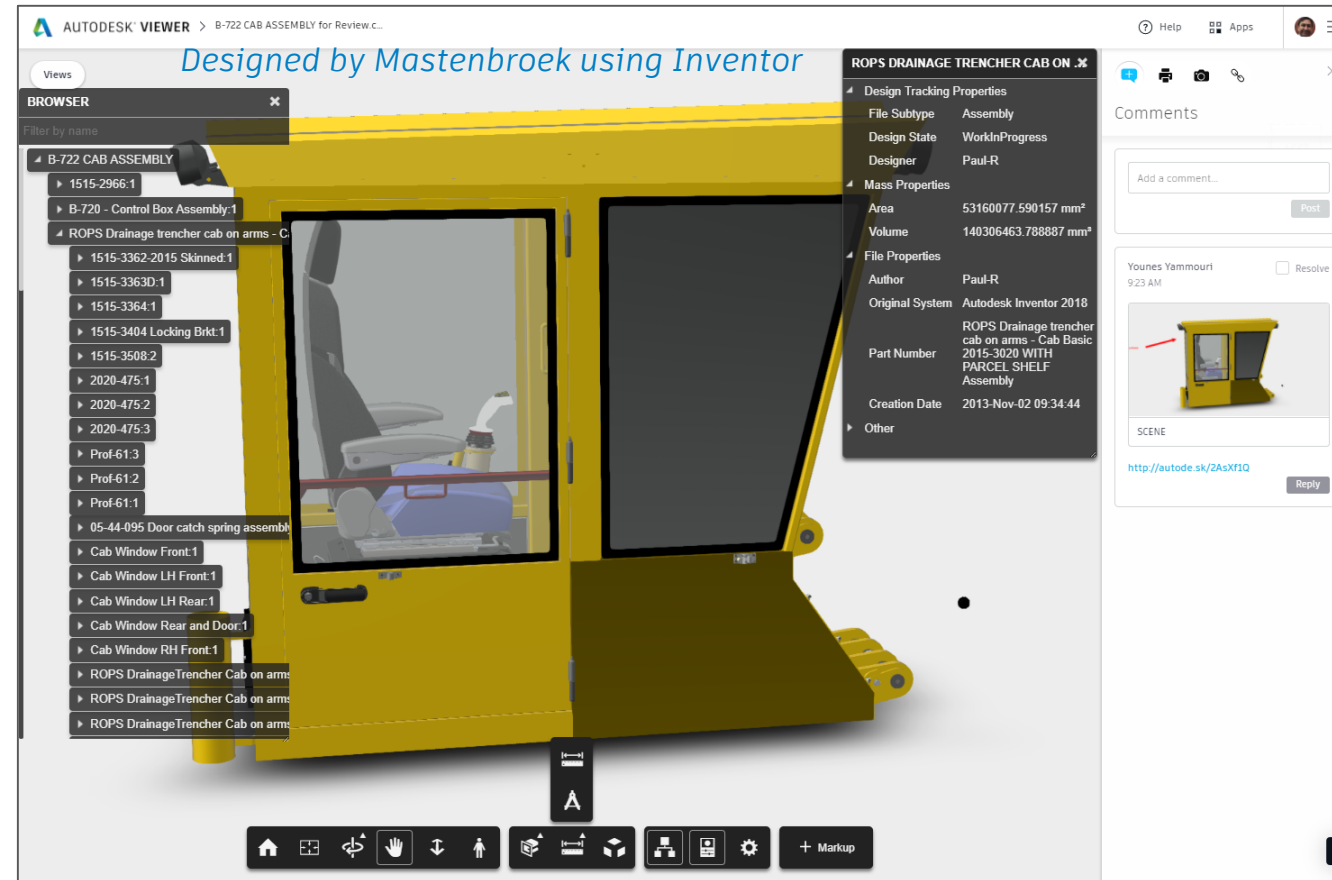
Access Views & Comment



Reply & Resolve

Reviewer Access & Comment

- Reviewer Sign In to add a comment
- Design Engineer receives email notification every time a comment is added



USERS

Entitlement & Access



Publish Views & Share



Access Views & Comment



Reply & Resolve

Design Engineers Access Shared Views Panel

- Access all Views shared by the user in one single user interface

- Shared Views Panel detachable

- Dock/ undock & Hide/ unhide

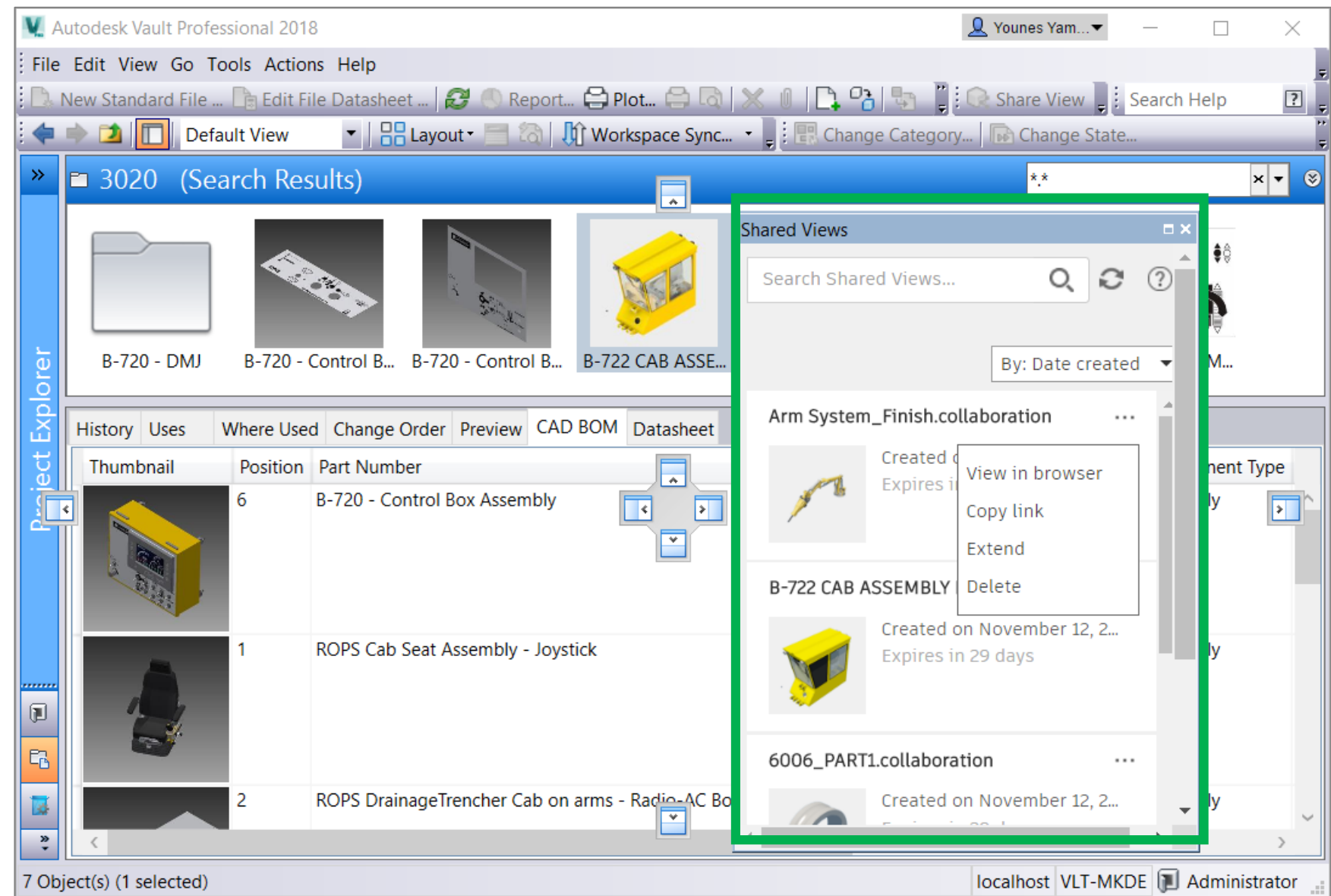
- View Panel capabilities

- Sync, Search, Navigate, Sort

- Copy Link, View in Browser

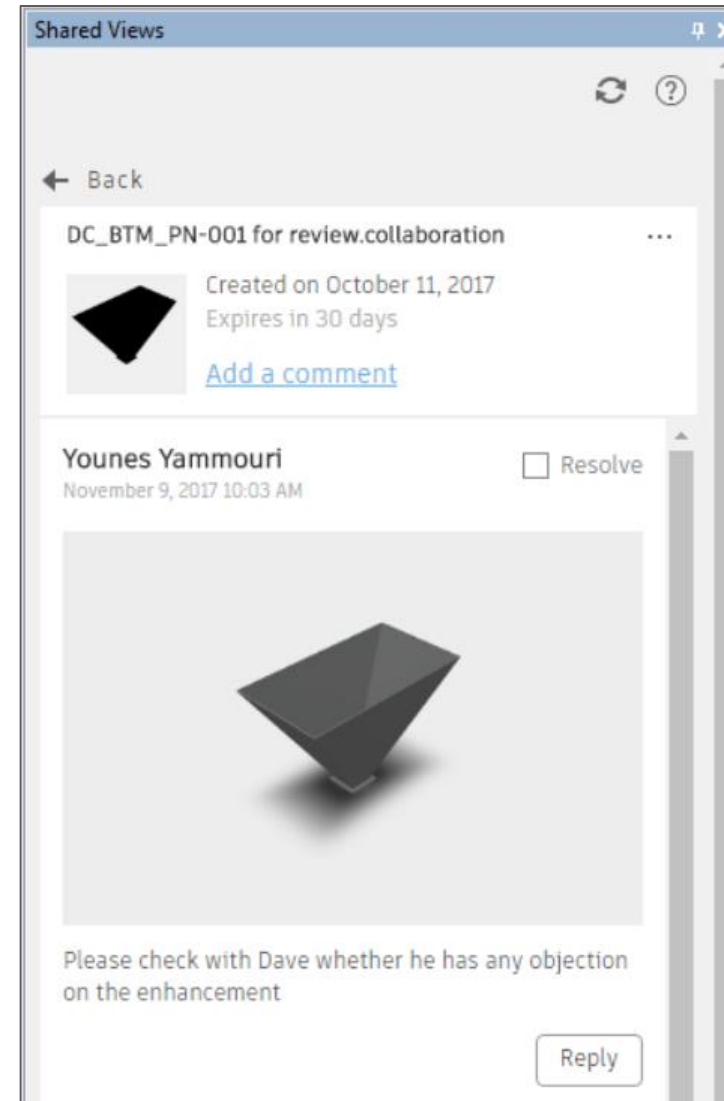
- Reply & Resolve comment

- Extend & Delete a Shared View



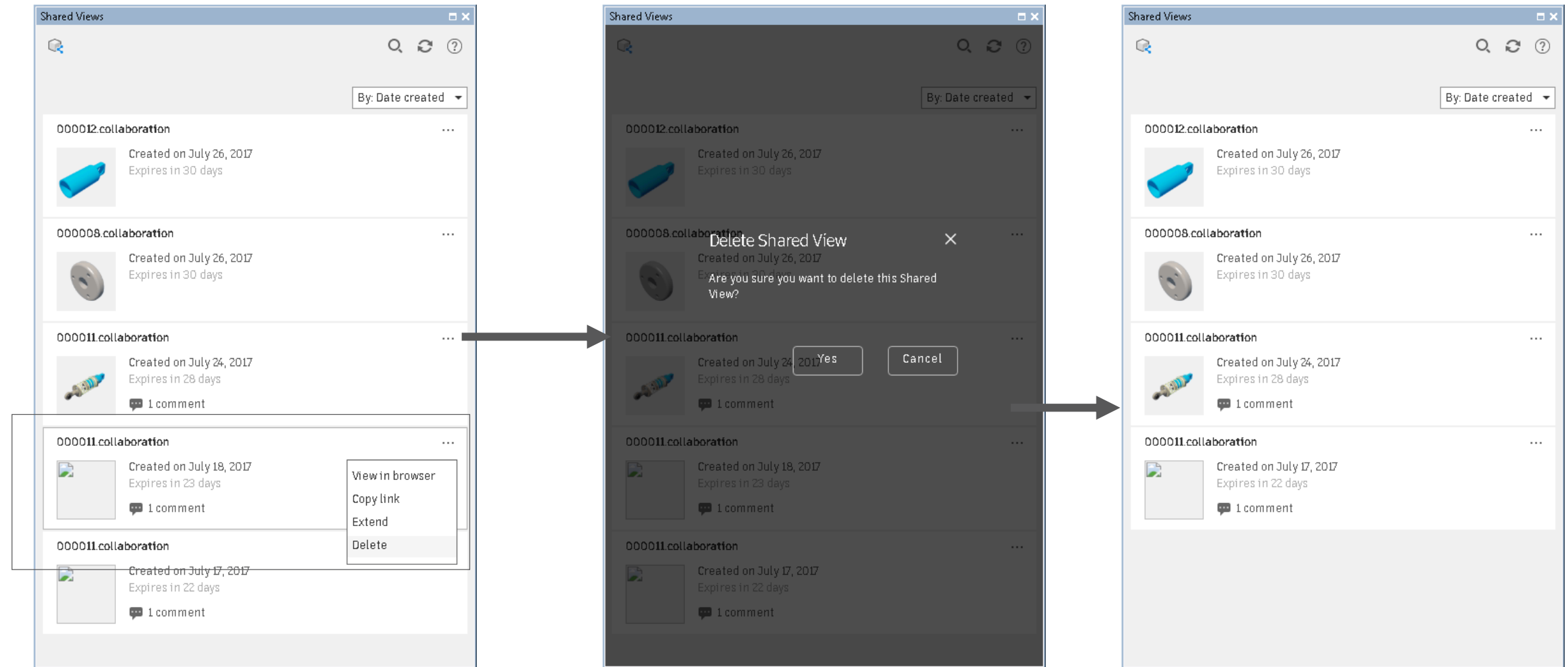
Reply & Resolve

- Design engineer resolves the feedback coming from the reviewer
- Reply with details
- set the shared view comment as resolved



Design Engineer Delete Views

Once Review Process is completed, design engineer delete the Views

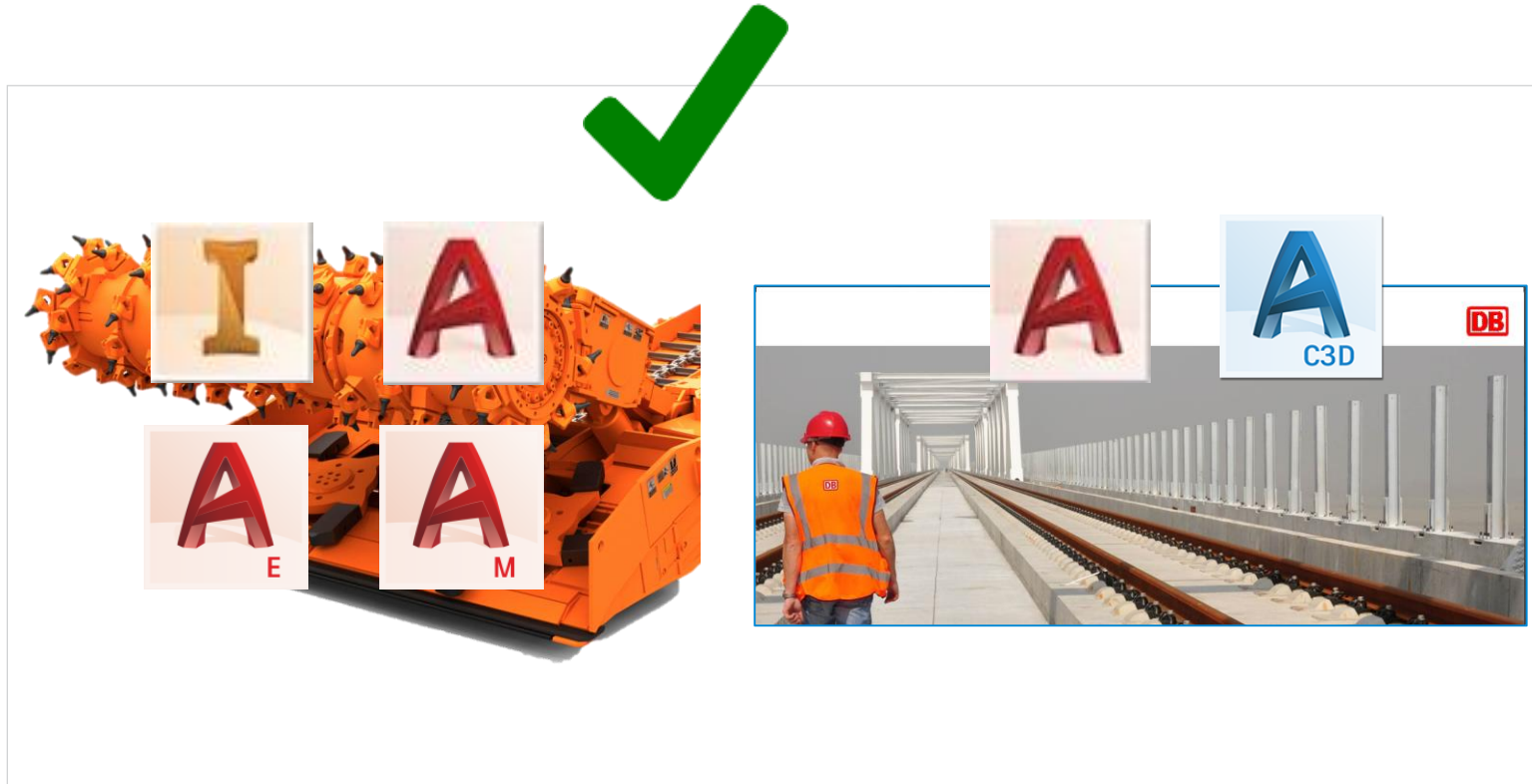


Shared Views expires automatically after 30 days and are deleted

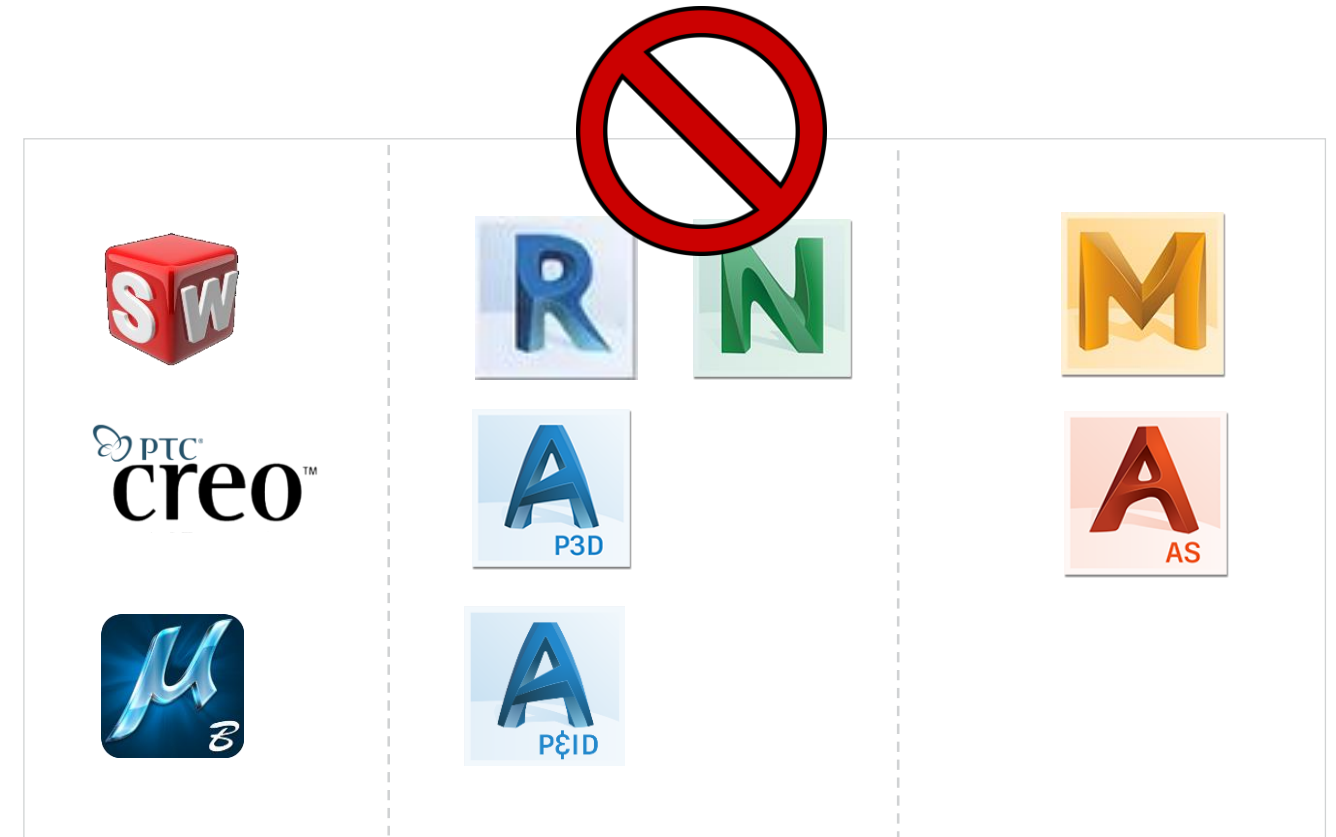
Live Demo

Good to Know

Supported Applications



*Shared Views available for 2D/ 3D application for focus industries
(Industrial Machinery & Infrastructure)*

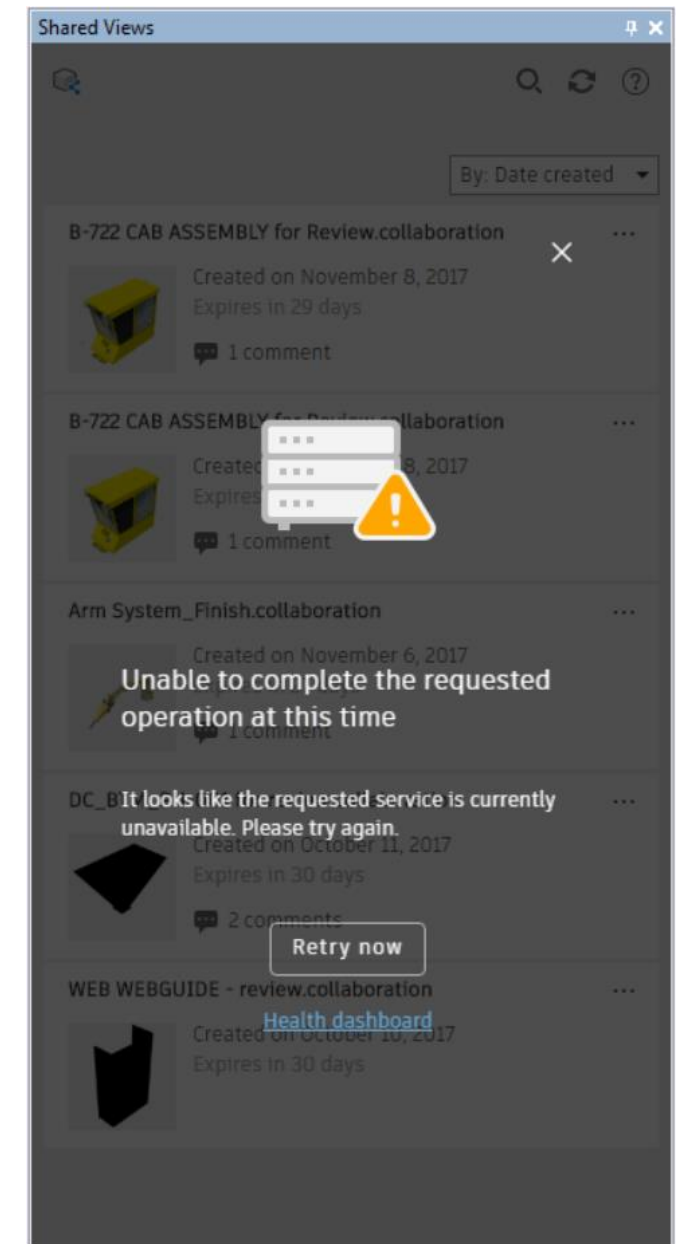
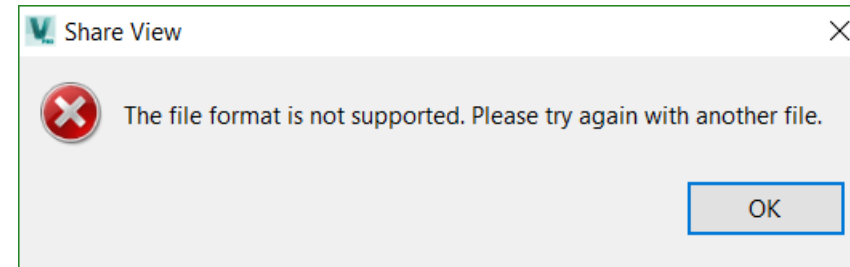


*Shared Views for SWx, Microstation, Alias, Moldflow,
Navisworks file type - User Message*

*P&ID, AS and other AutoCAD Verticals will not be
supported – Documented in the help*

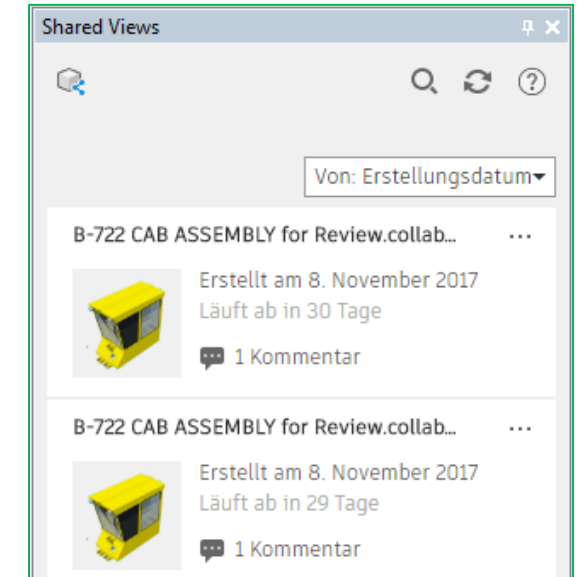
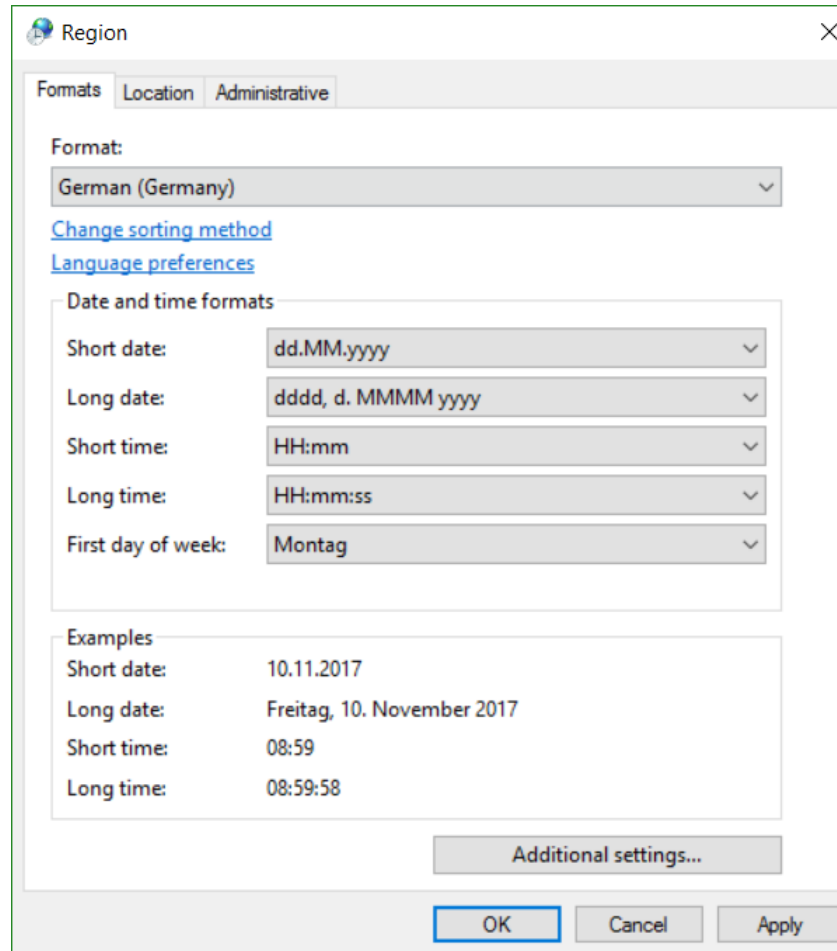
Good to Know – Error Handling

- Unsupported File type
- File is not uploaded properly
 - *<filename> cannot be uploaded. It appears you aren't connected to the internet. Please check your connection and try again*
 - *<filename> cannot be uploaded. It appears that the file is not being created. Please try again*
- Server is down
- Share View Naming
 - Illegal characters: * . " / \ [] : ; | = , "



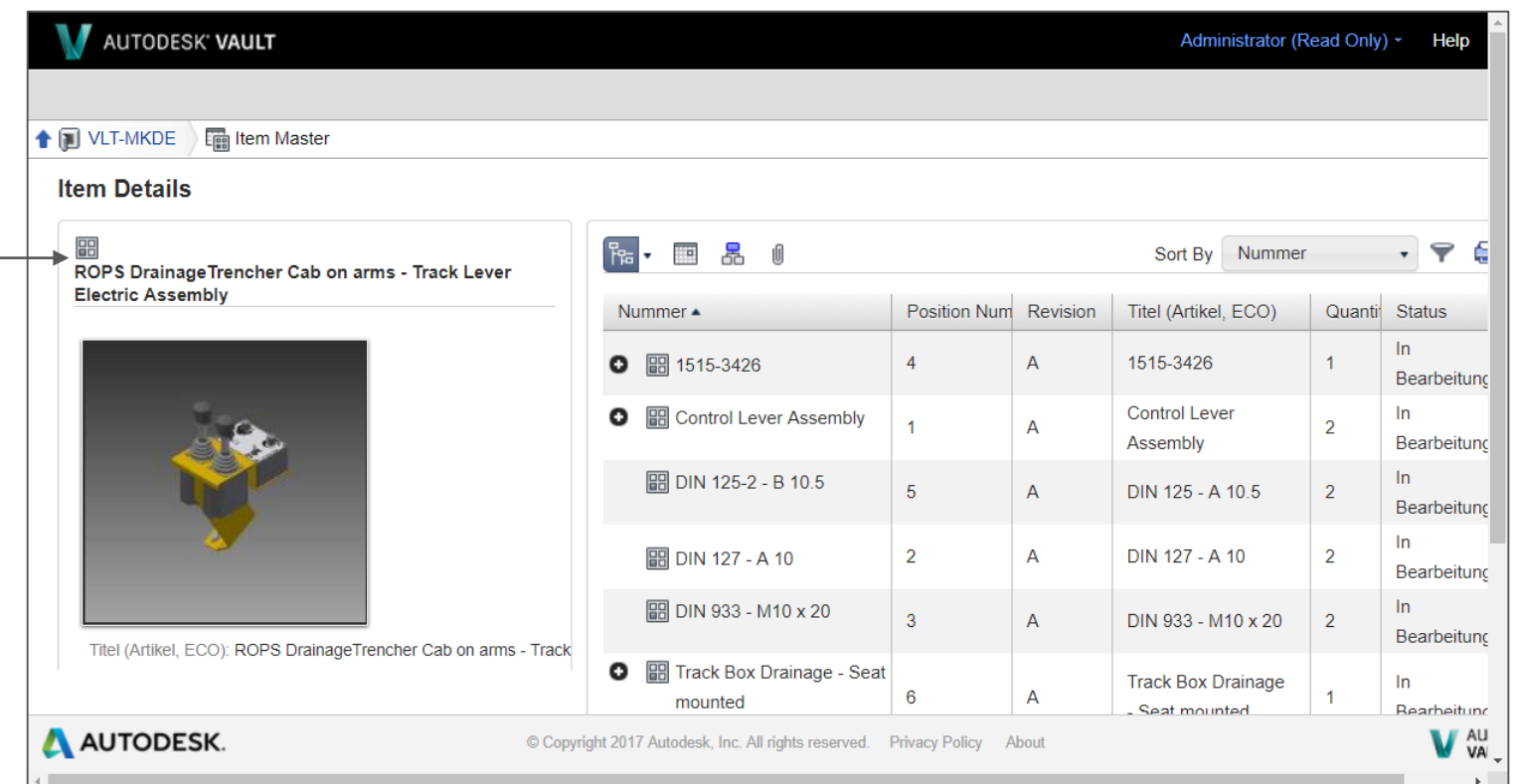
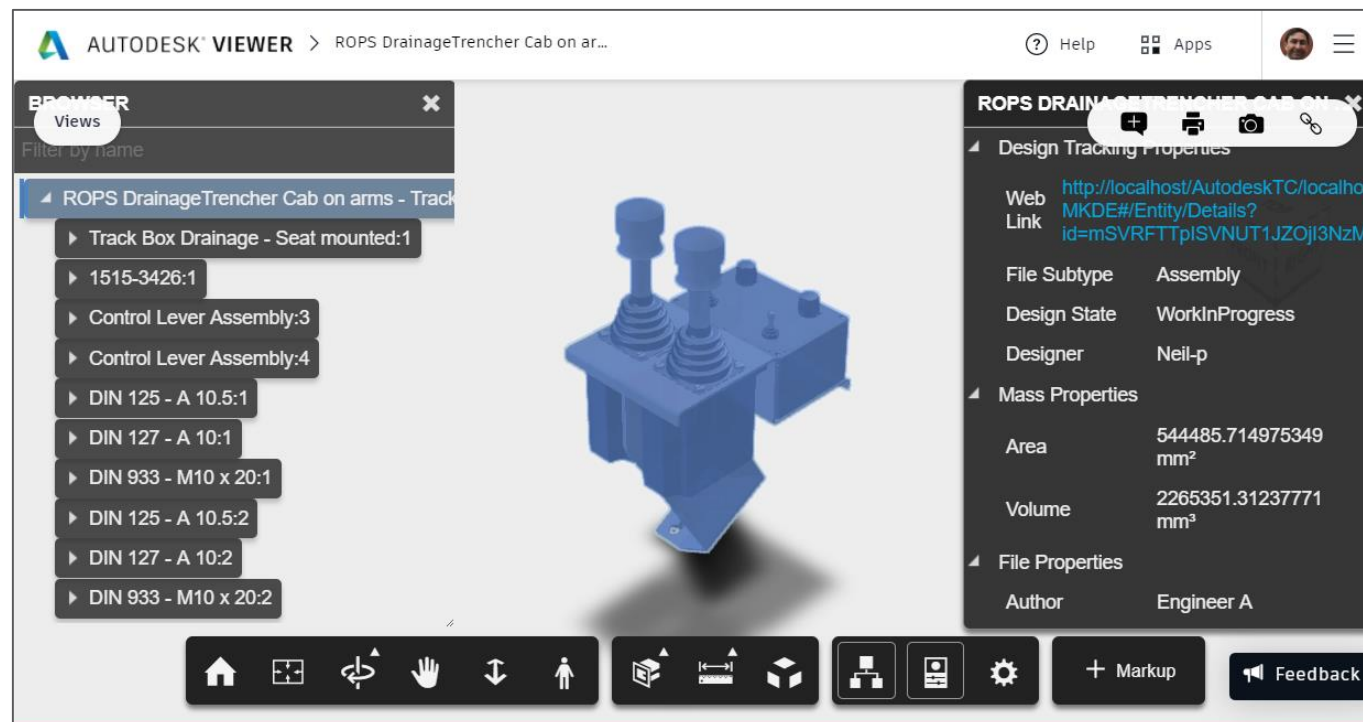
Good to Know – Language Setting

- Region Format control the language inside the Shared View Panel

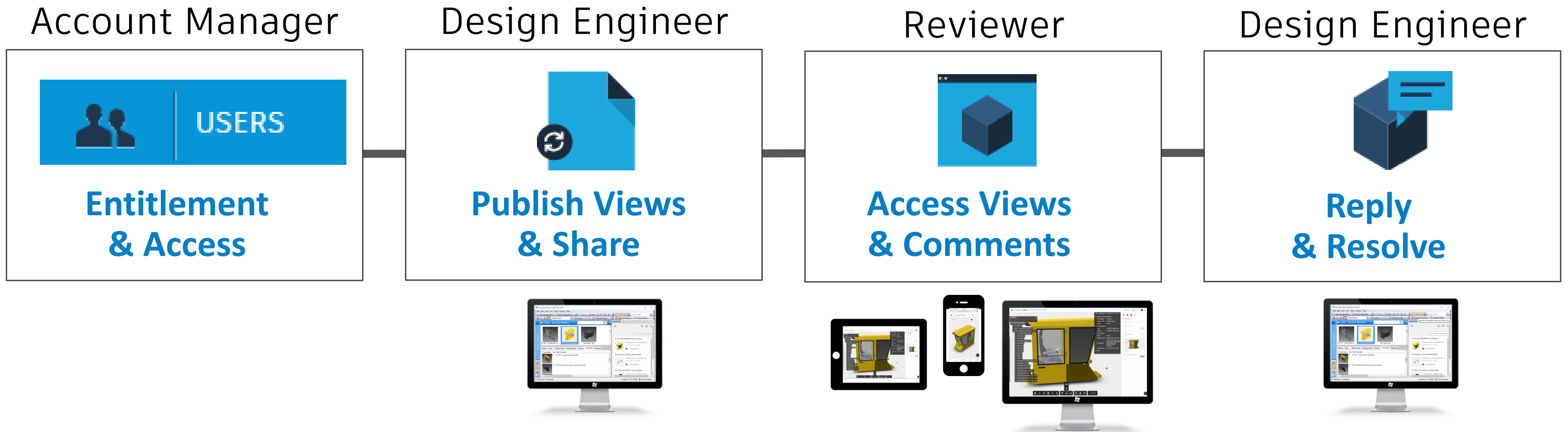


Share Views with Shopfloor

- Connect Shared Views with Vault Thin Client
 - Access additional information like BOM etc.
- Create Web Link Property and Mapping & Add Thin Client Link



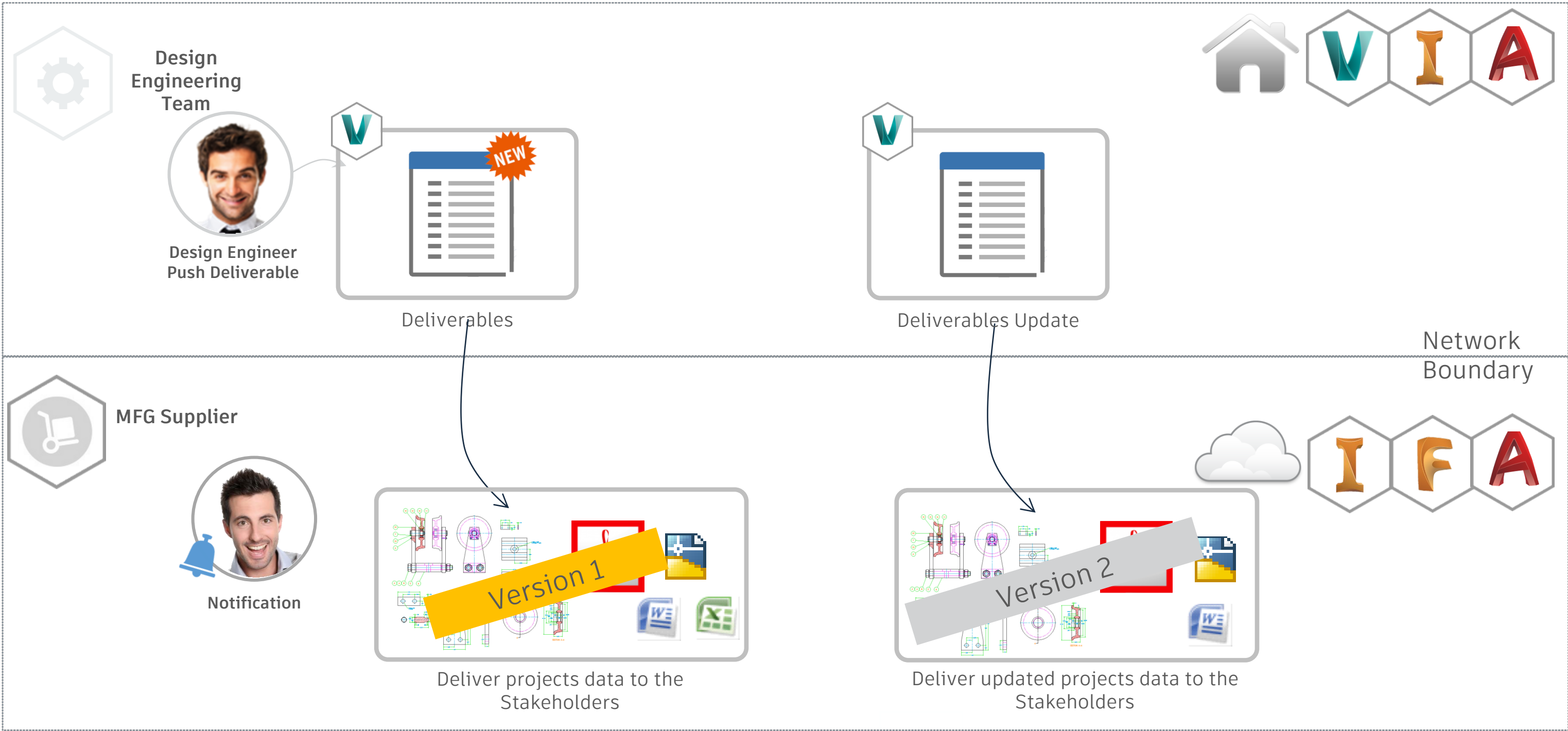
Shared Views – Workflow - Summary





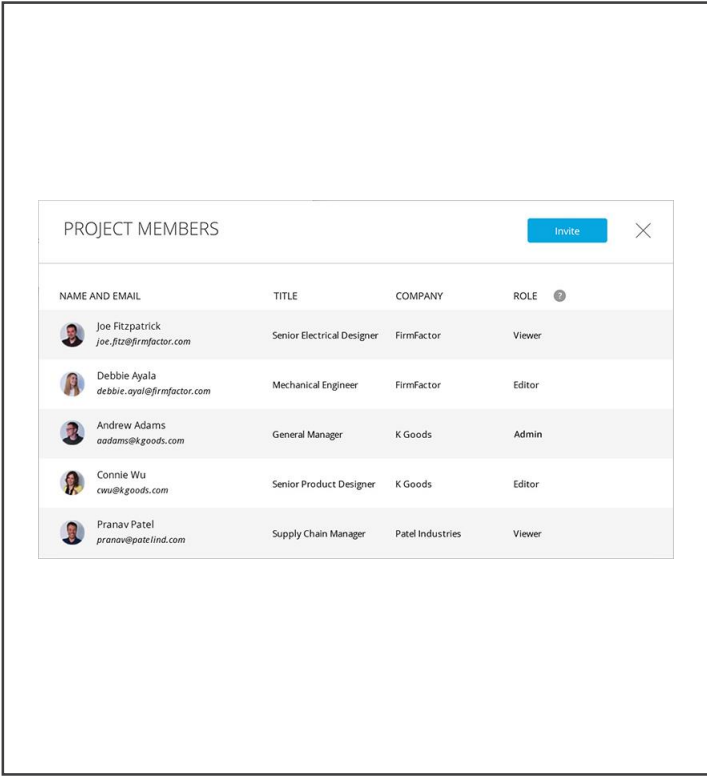
Connect - Deliverables for MFG Supplier/ Customers

Easy & Simple Deliverables Sharing



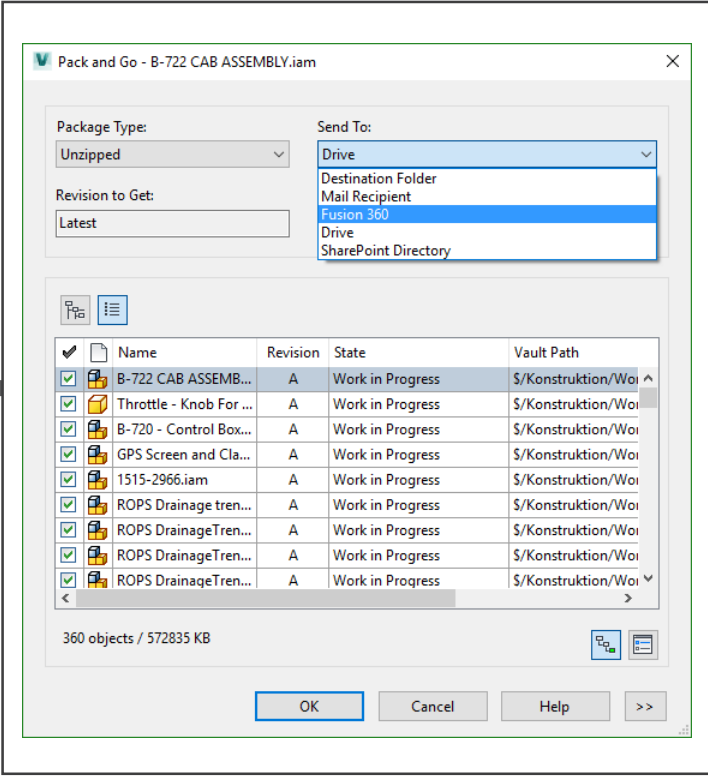
Shared Design Data - Workflow

Design Engineer/
Project Manager



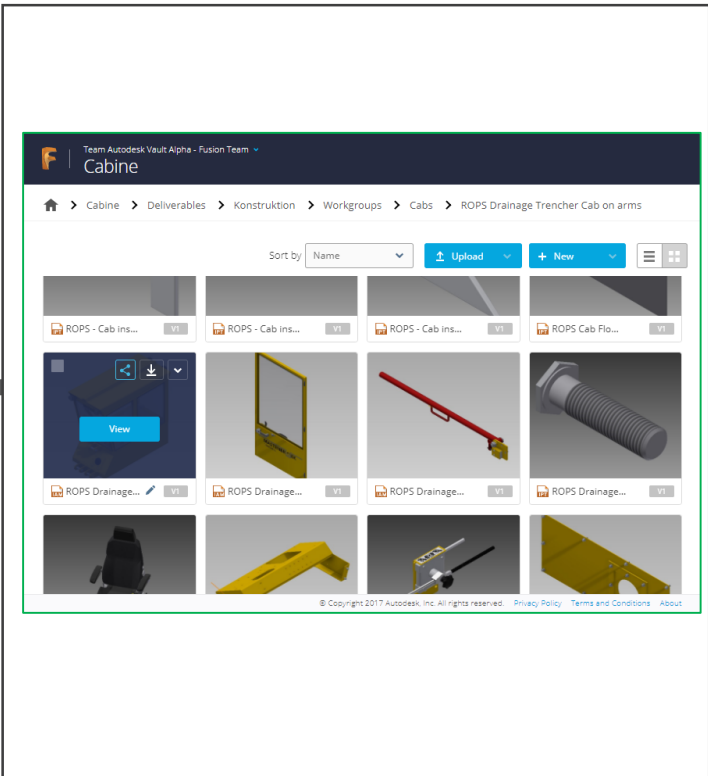
Project setup and
access in Fusion
Team

Design Engineer/
Project Manager



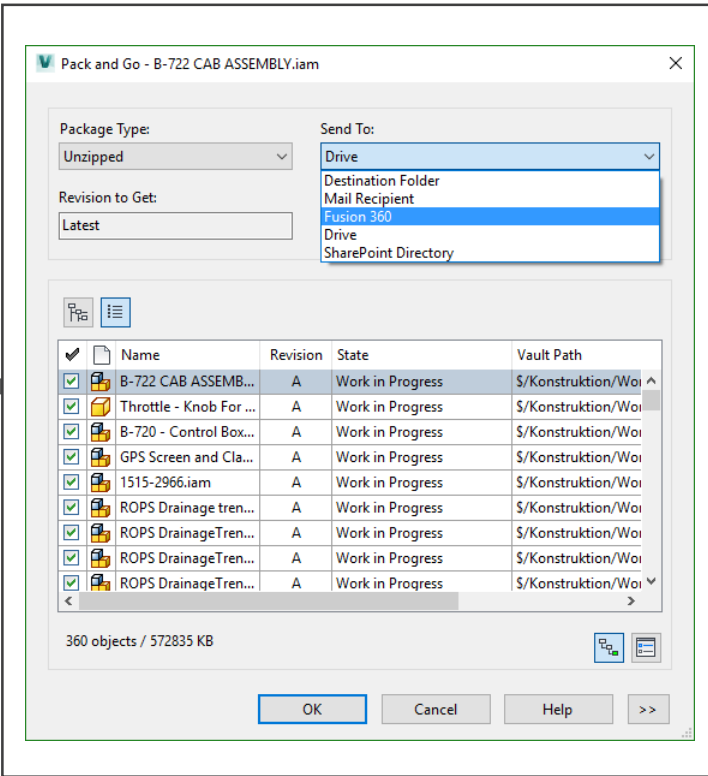
Share design
data from
Vault

MFG Supplier/
customer



Access design
data in Fusion
Team

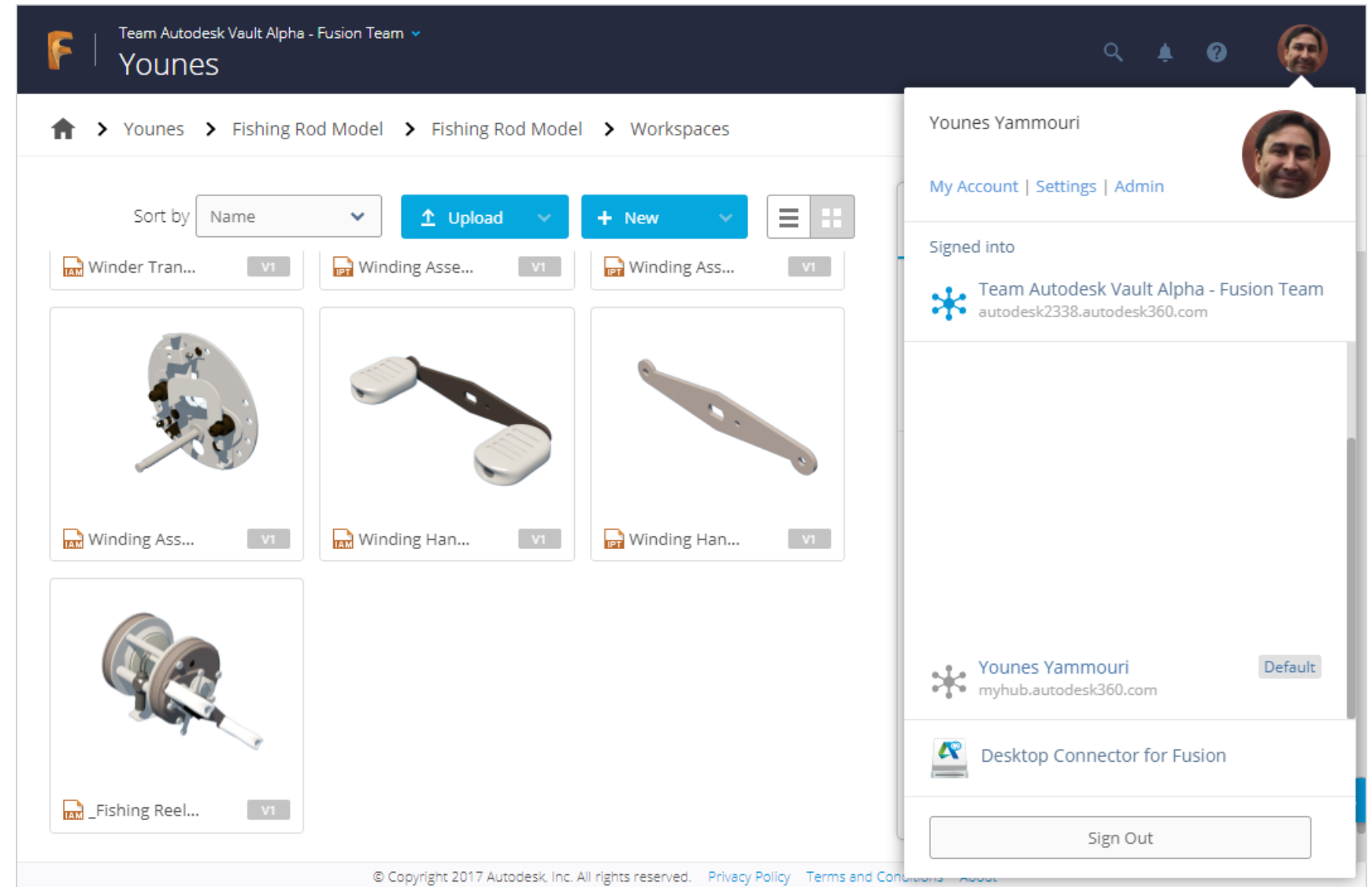
Design Engineer/
Project Manager



Update
design data
from Vault

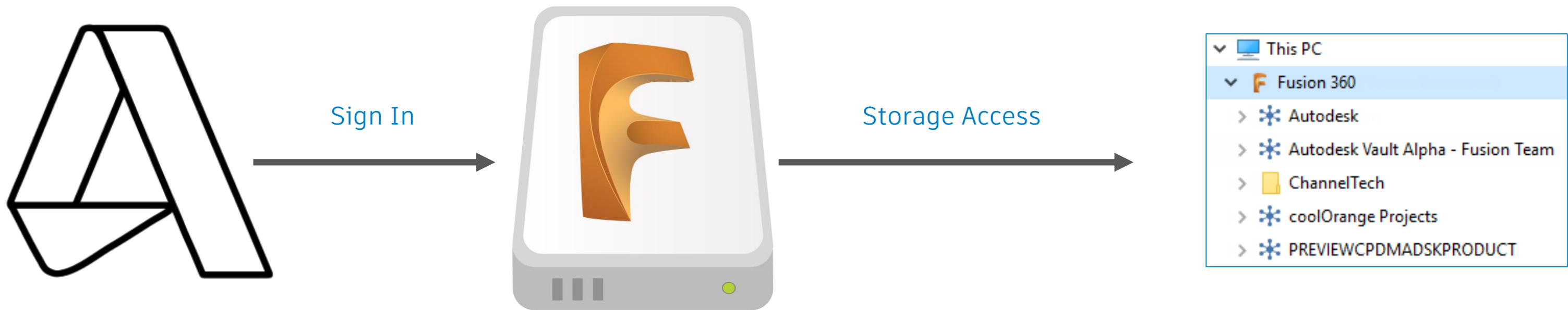
Project Setup

- Create new Project
- Download Desktop Connector
- Invite Collaborators



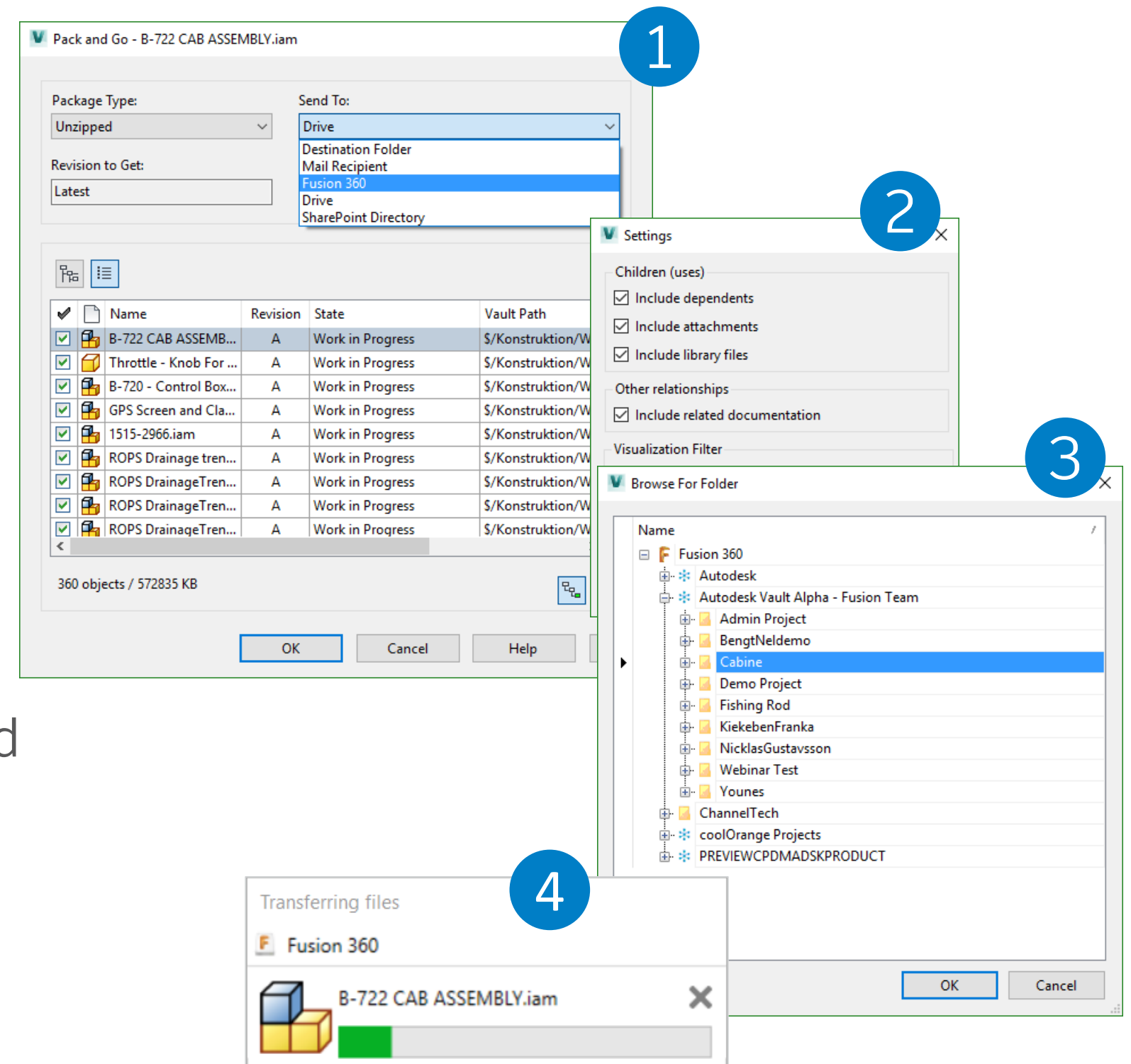
Fusion Drive - Desktop Connector

Desktop Connector connect your desktop to Fusion 360 Cloud Drives



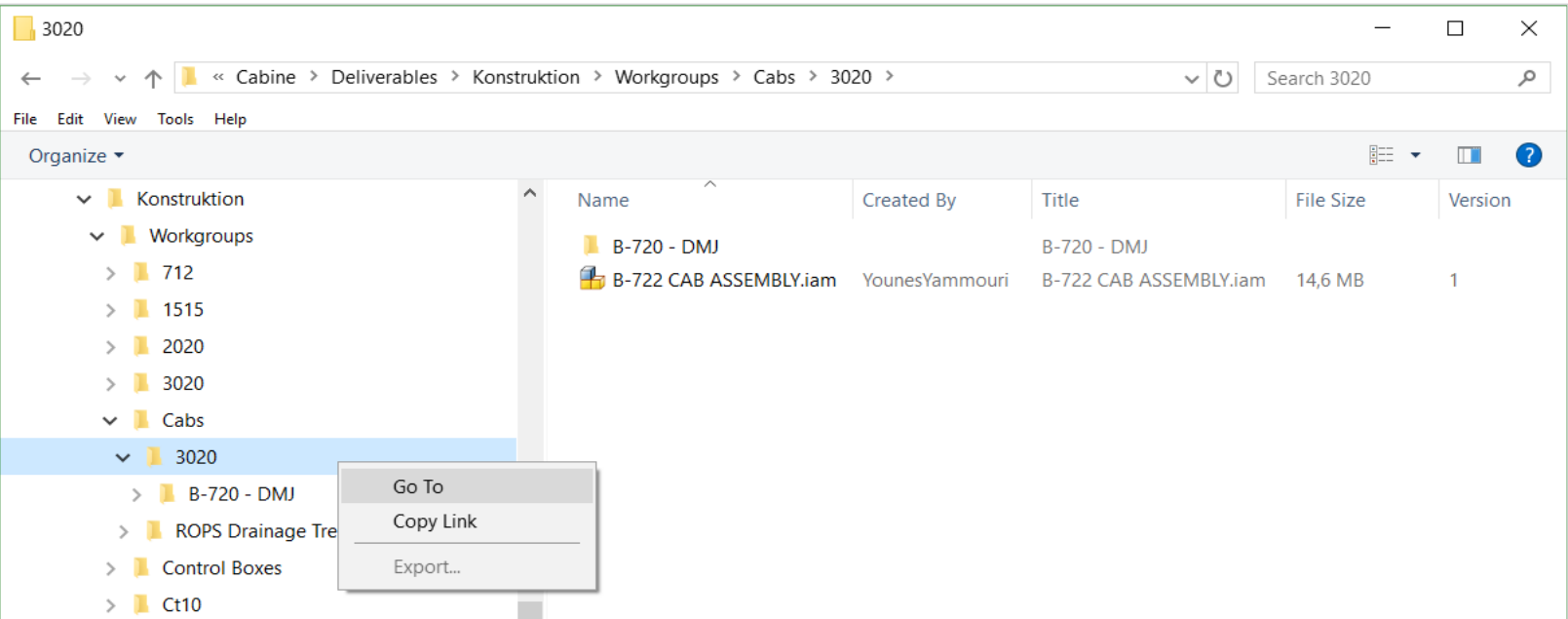
Share Design Data from Vault

- Pack & Go capability for Files & Items
- Include all references and documentation (Settings)
- Project selection using Desktop connector
- All files are now copied to the Fusion Cloud Drive location through Desktop Connector



Share Design Data from Vault – Transmittal Report

- Windows Explorer access to uploaded files



- Transmittal report is created and added to Fusion Team

AUTODESK. Transmittal Report

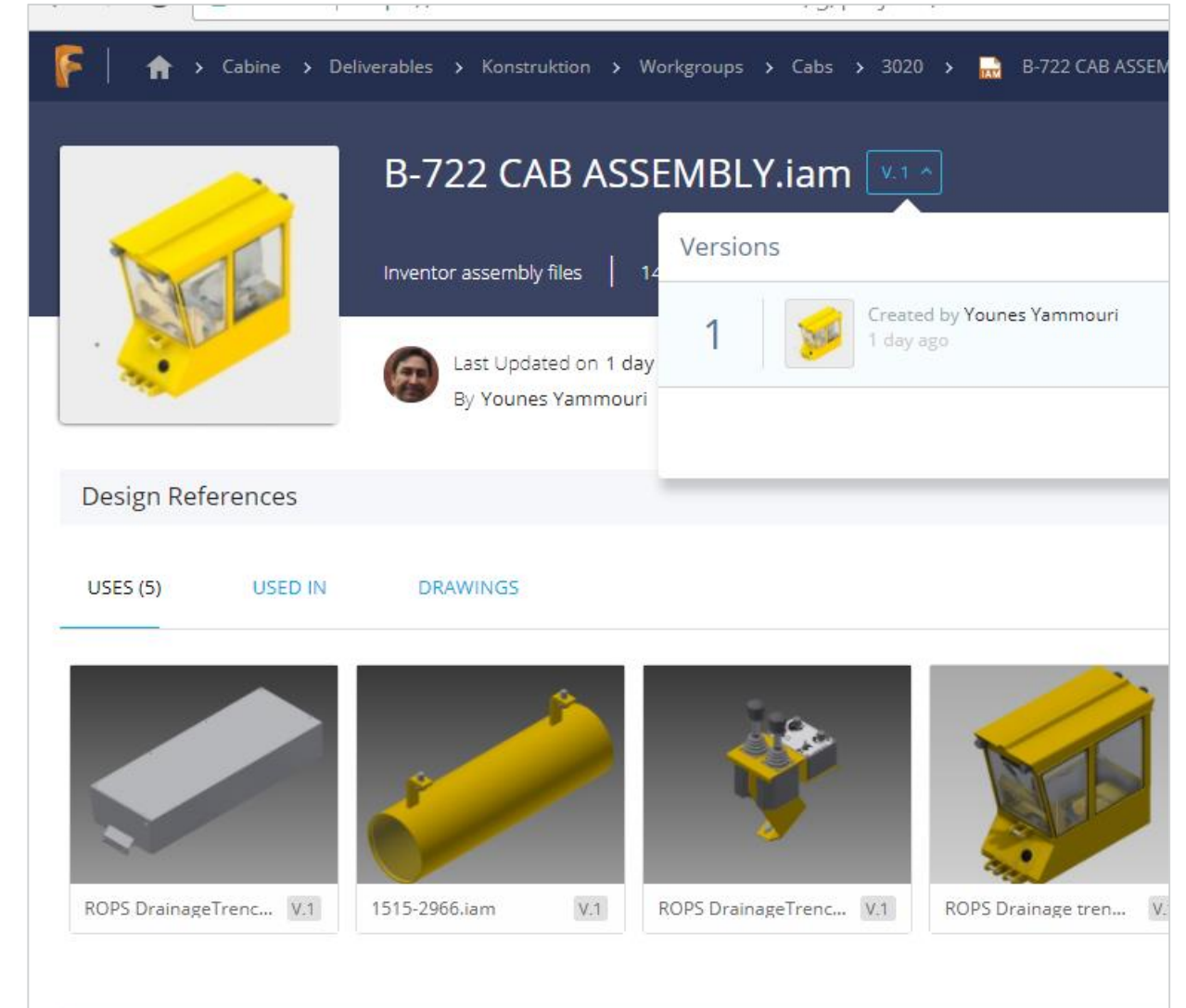
Generated By : Administrator
Date : 09.11.2017 14:57:24
Source : \$/Konstruktion/Workgroups/Cabs/3020/
Action : Pack and Go
Destination : C:\Users\yammouy\Fusion\Autodesk Vault Alpha - Fusion Team\Cabine\Deliverables

Transmitted Files:

Name	Revision	State	Vault Folder	Date Version Created
B-722 CAB ASSEMBLY.iam	A	Work in Progress	\$/Konstruktion/Workgroups/Cabs/3020/B-722 CAB ASSEMBLY.iam	07.11.2017 15:39:36
Throttle - Knob For Handle.ipt	A	Work in Progress	\$/Konstruktion/Workgroups/Control Boxes & Switches & Handles/Throttle - Knob For Handle.ipt	07.11.2017 14:29:31
B-720 - Control Box Assembly.iam	A	Work in Progress	\$/Konstruktion/Workgroups/Control Boxes & Switches & Handles/B-720 - Control Box Assembly.iam	07.11.2017 15:10:34
GPS Screen and Clamp mount assembly.iam	A	Work in Progress	\$/Konstruktion/Workgroups/Laser & Hydraulic/GPS Screen and Clamp mount assembly.iam	07.11.2017 15:10:34
1515-2966.iam	A	Work in Progress	\$/Konstruktion/Workgroups/1515/1515-2966.iam	07.11.2017 15:03:34
ROPS Drainage trencher cab on arms - Cab Basic 2015-3020 WITH PARCEL SHELF Assembly.iam	A	Work in Progress	\$/Konstruktion/Workgroups/Cabs/ROPS Drainage Trencher Cab on arms/ROPS Drainage trencher cab on arms - Cab Basic 2015-3020 WITH PARCEL SHELF Assembly.iam	07.11.2017 15:38:17

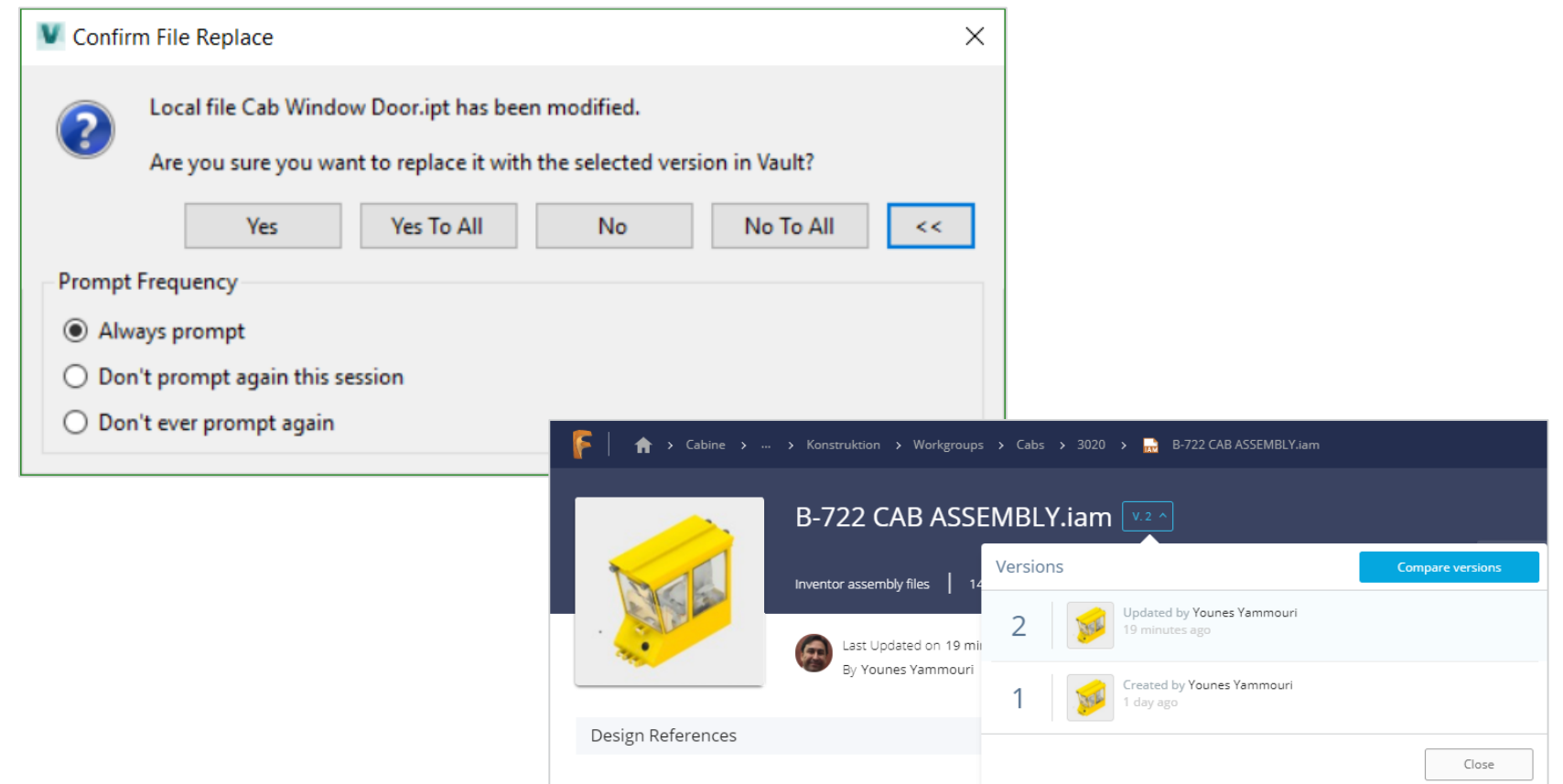
Access Design Data in Fusion Team

- Collaborator can access design files in Fusion Team
- Versions
- Design References
 - Uses, Used In
 - Drawings tabs
- Advanced Viewing capabilities incl. Markup & commenting, live review and more



Update Design Data from Vault

- Pack & Go capability for the same design
- New files are copied
- Changes files are updated



Organize ▾					
<div><div>> 1515</div><div>> 2020</div><div>> 3020</div><div>▼ Cabs</div><div>▼ 3020</div><div>> B-720 - DMJ</div></div>					
Name	Created By	Title	File Size	Version	
B-720 - DMJ		B-720 - DMJ			
B-722 CAB ASSEMBLY.iam	YounesYammouri	B-722 CAB ASSEMBLY.iam	14,6 MB	2	

Demo

Objectives

- How to better collaborate with your customers to collect feedback during review process
- Explore new ways to share data with your manufacturing suppliers
- Learn how to set up your environment to be ready for collaboration with customers and manufacturing suppliers

The background of the slide is a complex, abstract wireframe mesh. The mesh is composed of numerous interconnected lines forming a series of organic, flowing shapes that resemble a network or a series of interconnected tubes. The lines are thin and grey. A solid blue horizontal bar spans the bottom third of the image, providing a background for the text.

Beta & Vault Ideas Upcoming Classes

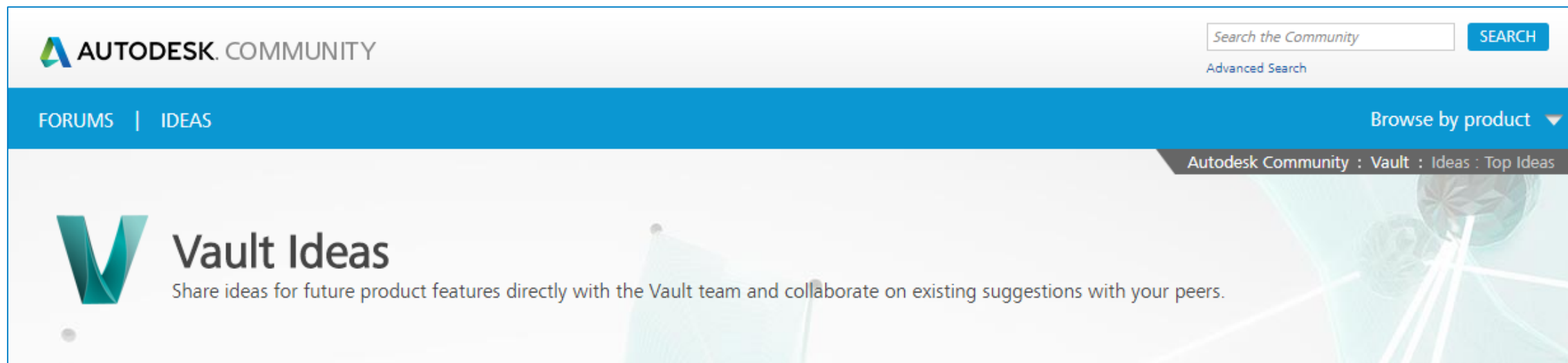
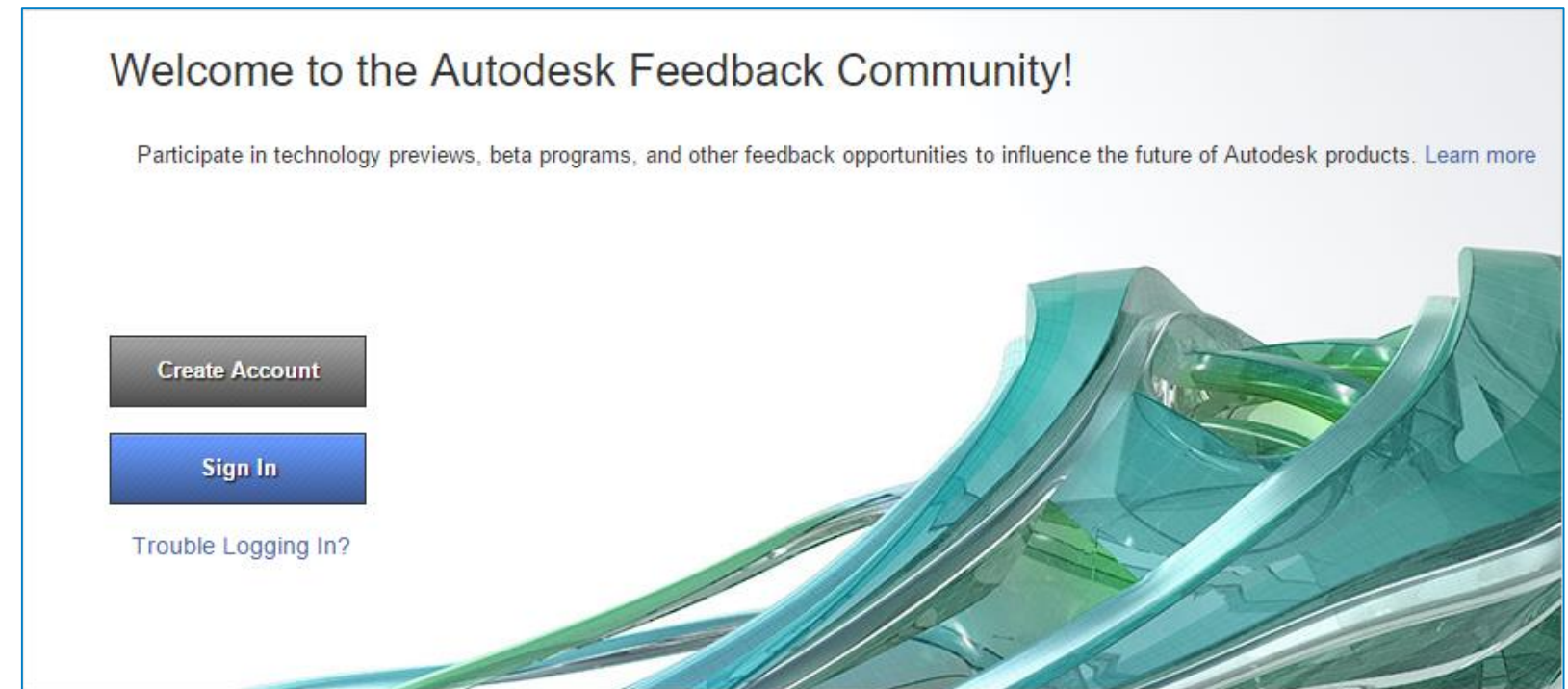
Make your voice heard

Vault Feedback Community:

<https://beta.autodesk.com/>

Vault Ideas:

Community can support ideas to surface the most relevant



Frame Tech for Testing – Vault Beta Page

Vault Beta

Hosted Products

Vault Professional Alpha4 - Hosted on Frame

Se

Project Tools

Project Tools

Users

Project Profiles

Reports

Resources

Project News

Videos and Testing Guides

On-line Help

Run Vault in your browser

Vault Professional Alpha4 - Hosted on Frame

Updated October 25th to provide access to Vault build 363.

This Vault build is hosted in four geographical datacenters; simply click on an image below to initiate a hosted desktop session closest to your location.

Thank you for your interest in this Alpha. It contains the Shared Space functionality to push data from the Vault to a cloud location. This can be done either as a scheduled job on a folder or a manual operation on files. Please watch the webinar to become familiar with the functionality. The webinar is in the Vault Beta Forum, under the Portal subject.

• Richmond, VA, USA:



• San Jose, CA, USA:



• Dublin, Ireland:



Did you participate in Vault Ideas and Vault Beta Program

Yes in Vault
Ideas and Vault
Beta Program

Yes in Vault
Ideas only

Yes in Vault Beta
Program only

No. I do not
participate in
any of them

Start the presentation to activate live content

If you see this message in presentation mode, install the add-in or get help at PolleEv.com/app

Total Results: 0

Upcoming Vault Class – Tuesday/ Wednesday

- **What the Heck Is Custom Object** - MFG120638 - Tuesday, Nov 14, 9:15 AM - 10:15 AM – Murano 3205, Level 3
- **Vault Extensions Snorkeling—First Touch to Vault Extension and Automation Programming** - SD124422 - Tuesday, Nov 14, 10:30 AM
- 11:30 AM – Lando 4305, Level 4
- **Vault 2018—What's New** - IM119808 - Tuesday, Nov 14, 1:00 PM - 2:00 PM – Murano 3203, Level 3
- **Cloud and Desktop – the Best of Both Worlds** - Tuesday, Nov 14, 2:15 PM - 3:15 PM – Murano 3304, Level 3
- **Vault Clinic—Troubleshoot Techniques for Vault Issues** - IM122725 - Wednesday, Nov 15, 8:00 AM - 9:00 AM – Murano 3203, Level 3
- **Replicate It—Explore the Replication Possibilities of Vault Professional** - IM122738 - Wednesday, Nov 15, 10:30 AM - 11:30 AM – Delfino
4004, Level 4
- **Managing Your Properties with Vault Professional** - IM118897 - Wednesday, Nov 15, 1:30 PM - 3:00 PM – Murano 3202, Level 3
- **Publish and Manage 2D PDFs in Vault 2018** - IM123663 - Wednesday, Nov 15, 3:30 PM - 5:00 PM – Murano 3303, Level 3


Upcoming Vault Class – Thursday

- **Data Management Avengers—Guardians of the Data Galaxy** - PM121142 (11/16/17 (Thursday) 9:15 AM - Murano 3304, Level 3)
- **Airing Dirty Laundry: Cleaning and Loading Your Data to Vault** - IM124378 - Thursday, Nov 16, 9:15 AM - 10:15 AM – Murano 3205, Level 3
- **Vault Extensions Deep Dive—Explore Vault Extension and Automation Programming** - MFG124959 - Thursday, Nov 16, 10:00 AM - 11:30 AM – Murano 3303, Level 3
- **Looking into the Crystal Ball: The Future of Vault at Autodesk** - IM119917 (11/16/17 (Thursday) 3:45 PM - San Polo 3406, Level 3)

Blog Resources

Autodesk Vault

- blogs.autodesk.com/vault

 Autodesk Vault - Under the Hood

Autodesk Inventor

- blogs.autodesk.com/inventor

 INVENTOR BLOG

More Questions? Visit the AU Answer Bar

- Seek answers to all of your technical product questions by visiting the [Answer Bar](#).
- Open daily in the Exhibit Hall.
- Staffed by Autodesk developers, QA, support engineers, and AU speakers ready to help you through your most challenging technical questions.



Please Fill Out Your Surveys

- Your class feedback is critical. Fill out a **class survey** now.
- Use the AU mobile app or fill out a class survey online.
- Give feedback after each session.
- AU speakers will get feedback in real-time.
- **Your feedback results in better classes and a better AU experience.**

