



Using Autodesk® AutoCAD® Sync and the Autodesk® 360 Web and Mobile App to Be Productive

Bud Schroeder – Autodesk Inc.

AC3121

Learning Objectives

At the end of this class, you will have a better understanding of...

- What is Autodesk 360 Sync and how can I use it?
- What is Autodesk 360 WEB and how can I use it?
- What is Autodesk 360 Mobile and how can I use it?
- Do I need to use all of these?

About the Speaker

Bud is a Senior Test Engineer for Autodesk Inc since 1997. Before joining Autodesk, Bud was a CAD Manager/IT Manager for a Power Utility in Northern California. Started using AutoCAD with version 2.6 and before that used drawing boards. But spent the first 15 years working on the AutoCAD Team and as a Senior Test Engineer and is currently working on the Autodesk Cloud Team as a Customer Success team member. You also can find bud on the discussion boards for Autodesk as well as running the Autodesk Mobile BETA Programs for Autodesk 360. If you need to contact Bud, you can send eMAIL to him at...

bud.schroeder@autodesk.com

This paper does not expose everything about Autodesk 360 Sync, WEB and Mobile, but to give you an idea of how they work. Be sure to check the help for each of these features for more details. Also don't be afraid to experiment with the features to see how they work before you put them into production.

Autodesk 360 Sync:

[What is Autodesk Sync and how can I use it?](#)

Starting with AutoCAD 2013 Autodesk Sync was added to the AutoCAD based desktop products. Autodesk Sync allows you to save your current files and sync them automatically to the Autodesk 360 WEB Site. There are two parts to Autodesk Sync from inside of AutoCAD. Sync your drawing files and Sync your customization.

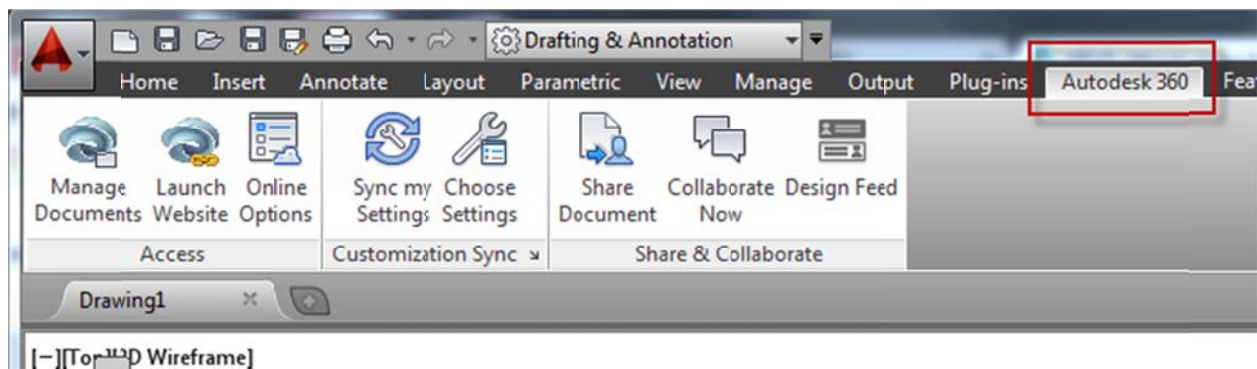
- Sync my drawing files
- Sync my Drawing files and XREF Files

When you install AutoCAD 2014 the desktop sync client will be installed on your system. This will add an Autodesk 360 desktop shortcut, as well as an icon in your System tray.

Autodesk 360 Sync is supported with AutoCAD, AutoCAD LT and AutoCAD based vertical products. Autodesk Inventor, and Autodesk Showcase. You can use Autodesk 360 WEB for other products that are not included as part of Sync. But you will need to use the WEB Site and drag and drop your files.

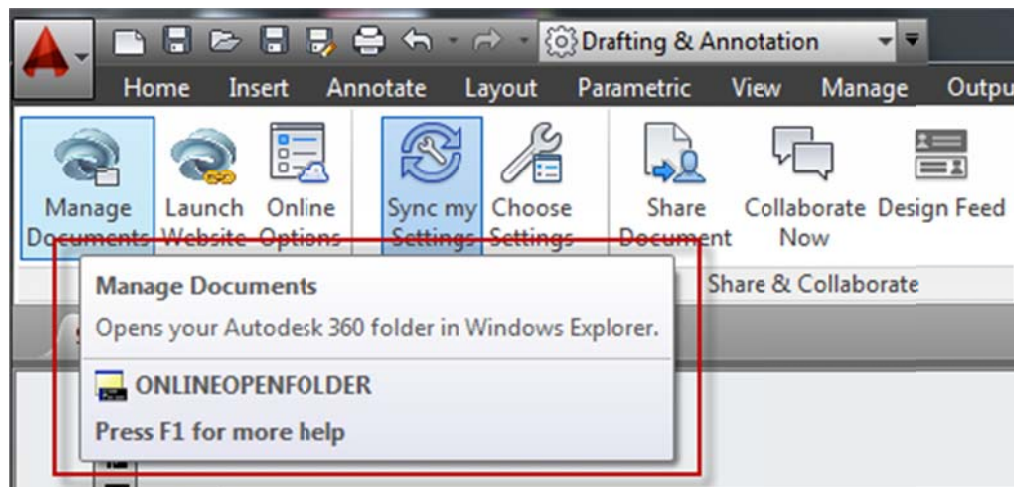
The advantage of using Autodesk 360 Sync over drag and drop to the WEB Site is that it will gather your support files like XREF files. Drag and drop will not be able to do that. Sync works somewhat like eTransmit.

Autodesk 360 Ribbon TAB

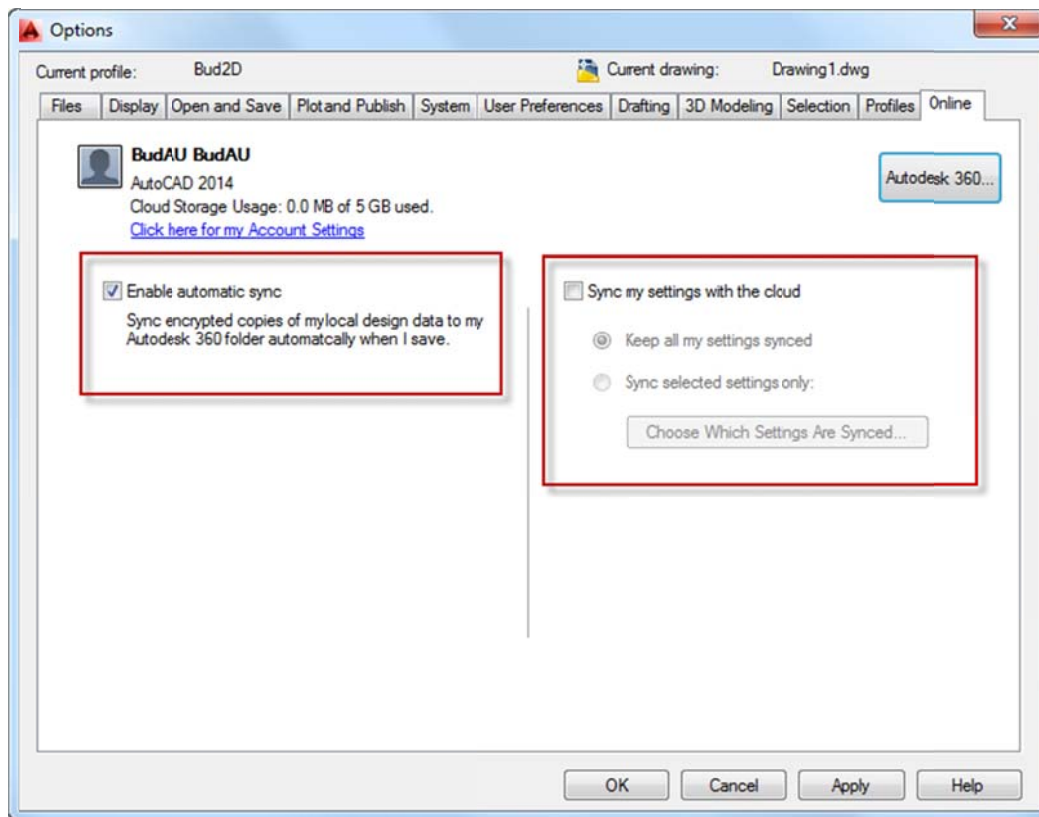


The Ribbon TAB in AutoCAD has multiple options for accessing your Autodesk 360 files. Be sure to create a simple test drawing and explore these settings. If you hold the mouse cursor over each Ribbon panel, you will see a tip. Click on each one to get a better idea how they work and how you can take advantage of them.

NOTE: These Ribbon settings will cover both Drawing and File Sync.



Options Online TAB



The Online TAB will only show up when you are logged into Autodesk 360. Note that in the screen shot above Sync my settings to the cloud is not checked. If you want to sync your settings be sure to check this checkbox. The left side is for syncing your drawing files. If you do not want to sync drawing files you can uncheck this and log out of Autodesk Sync.

Customization Sync:

With the customization sync you can choose how much you want to sync to the Autodesk 360 WEB Site. From the options dialog you can configure to use all of it to none of it. These files are hidden on the Autodesk 360 WEB site. With this enabled you can sync your customization between the office and home.

Note: *This feature is not designed to share customization between office machines, but to be used by the same user but on different computers such as home and office, desktop and laptop.*

Here is what shows up in Options when you click on Chose Which Settings are synced...

Choose Which Settings are Synced...

Options

Customization files

Printer support files

Custom hatch patterns

Tool palettes

Drawing template files

Settings that require a restart of the application

Custom fonts, shapes and linetypes

Automatic Sync:

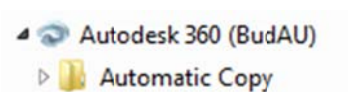
Automatically copies your drawings and any linked files such as xrefs to Autodesk 360.
(ONLINEDOCMODE system variable)

For security, your files are encrypted during transmission.

The advantage of using Automatic Sync is that anytime you save a file it will be put in the Sync drive location under the Automatic Copy folder. This is off by default but if you are planning on using Autodesk Sync, it's good to turn it on. The advantage of Automatic Sync is that any files you save from inside of AutoCAD will be saved to your Autodesk 360 WEB Site. If there are support files such as XREFs, they will also be saved to the Autodesk 360 site.

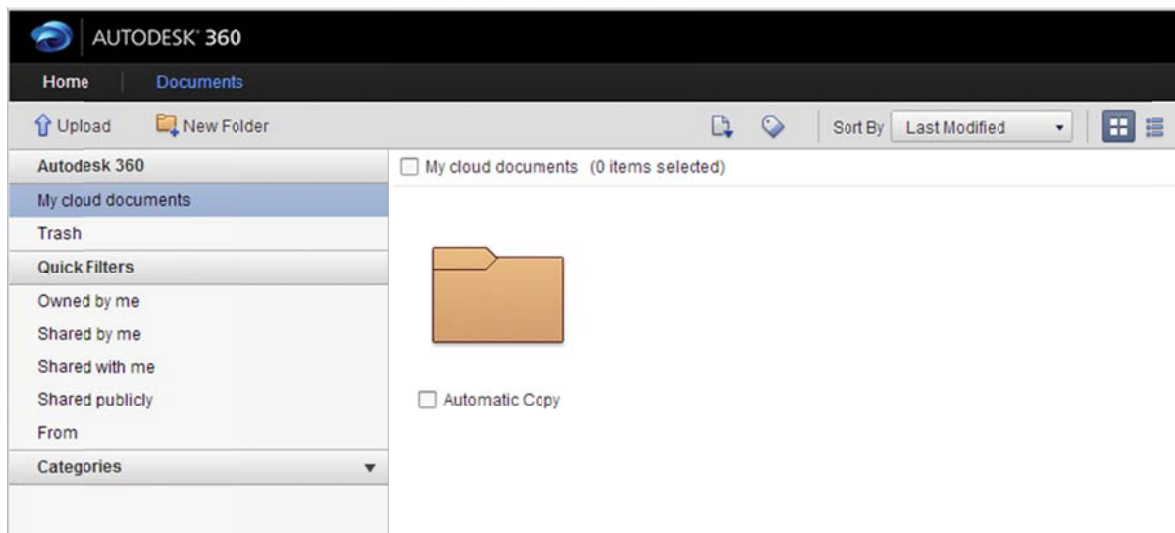
NOTE: *If you were to use just the WEB Browser to upload the same file it will not copy the linked files automatically. You need to use Autodesk Sync for that to work.*

Automatic Sync



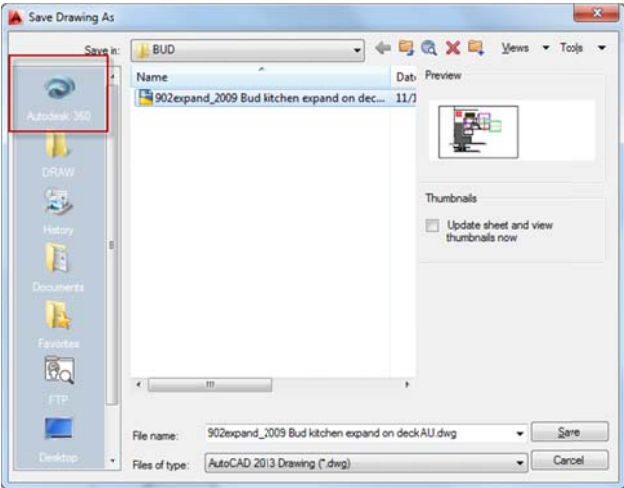
Once the files have been synced, you will see the folder in the Autodesk 360 WEB Site. In this example it's the Automatic Copy folder. If you have created other folders in the Desktop Sync location, they will also be synced and show up in this location.

Autodesk 360 WEB

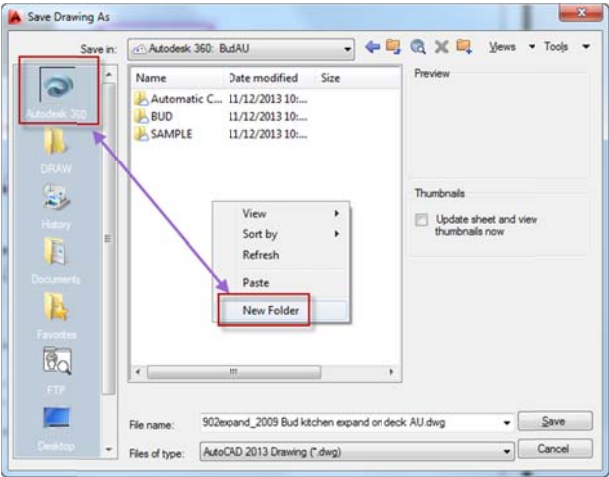


Along with Automatic Copy you can save files manually to the Autodesk 360 Sync folder. If it's a new file you can save it in the Autodesk 360 folder or if it's an existing drawing, you can save it to the Autodesk 360 Sync folder. At the same time, you can create a new folder by right clicking on the SAVEAS dialog and selecting New Folder. These files will be saved outside of the Automatic Sync folder but will still be synced automatically each time you save your file.

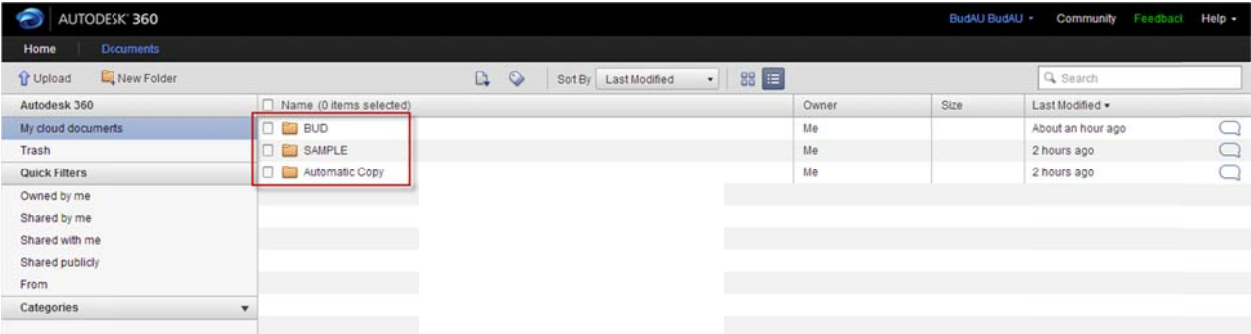
SAVEAS



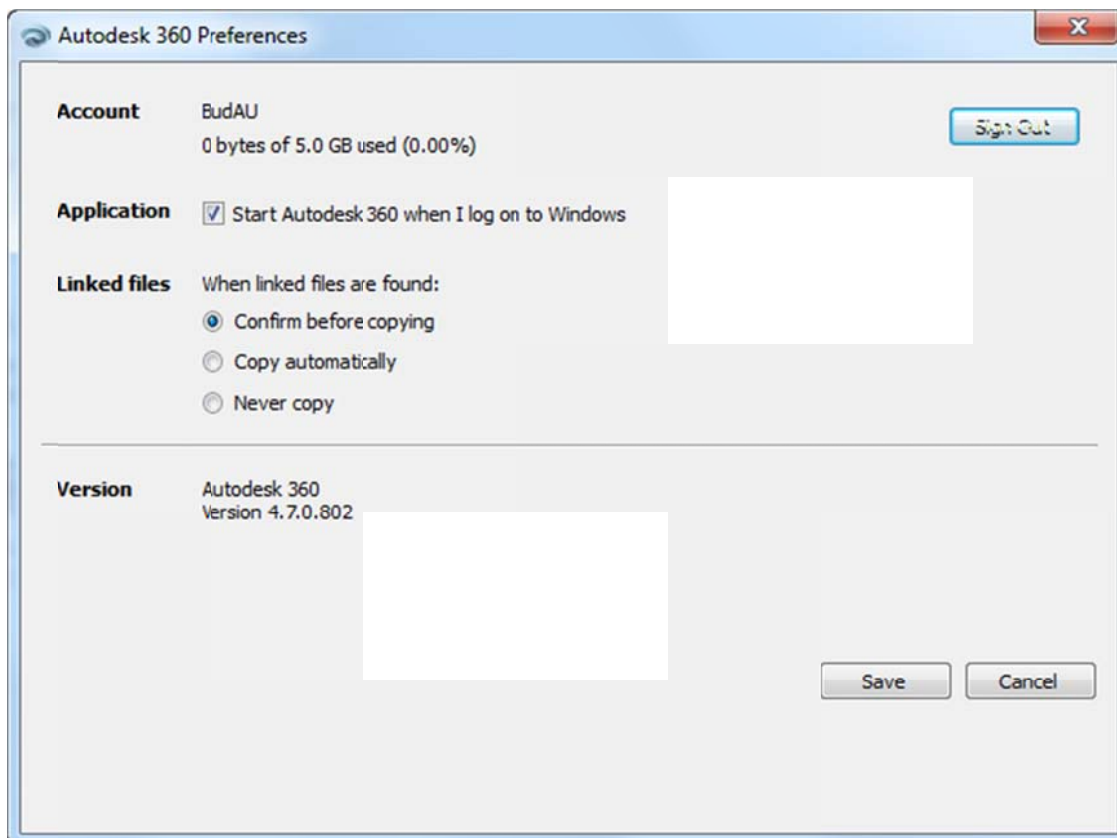
SAVEAS NEW FOLDER



Autodesk 360 WEB Site showing synced folders



Autodesk 360 Sync Preferences



You can get to the Autodesk 360 Preferences by right clicking on the Autodesk 360 sync icon in the system tray. Then select the Preferences... option. This will bring up the Autodesk 360 Preferences dialog shown above. From this dialog you can see your account name, and how much disk space you are using as well as how much is still available.

NOTE: If you are a subscription customer you are can get up to 25 gigs of space. For free accounts you get 5 gigs of space.

Application will start the Autodesk 360 service each time you restart your computer. If you do not want the service to start up automatically then uncheck this checkbox. Understand that the service will start if you log into Autodesk 360 or double click the Autodesk 360 Desktop Icon.

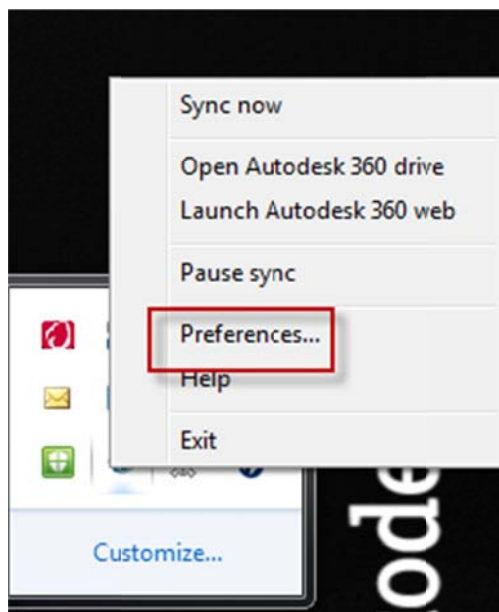
Linked files allow you to select the options to confirm before copying, copy automatically or never copy. If you do not want to get prompted every time, check the Copy Automatically option.

The version information at the bottom is a great for checking to see what version you are running. As of this paper the latest version for Autodesk Sync is...

Version 4.7.0.802

NOTE: That the Autodesk Sync Team releases live updates to fix issues found in sync. After running the live update you can use this to check if the version has been updated.

Right Click Autodesk 360 Sync Options



Sync Now

Open Autodesk 360 Drive

Launch Autodesk 360 web

Pause Sync

Preferences

Help

Exit

The right click Sync options will give you more control over Autodesk 360 from the desktop products like AutoCAD. We talked about Preferences now let's talk about the other options. We can start at the top.

Sync Now – This will force Sync to start syncing as soon as you click the option. If you are trying to get something uploaded to the Autodesk 360 site and don't want to wait for the Sync time built into AutoCAD click this option.

Open Autodesk 360 Drive – This will open up File Explorer and displaying the Autodesk 360 Drive and folders that are copied there.

NOTE: *If you have not used Sync yet this will be empty.*

Pauses Sync – This will pause Autodesk 360 Sync so that nothing is getting synced to the WEB Site. You may want to use this while testing files or looking at files that you are not ready to sync yet.

Preferences – As noted above this brings up the Preferences for Autodesk 360

Help – This brings up the Autodesk 360 WEB Site help page.

<http://docs.autodesk.com/ADSK360/help/ENU/index.html?url=files/GUID-0D0294A0-A8B3-4405-AAE7-B26C2BAD9148.htm,topicNumber=d30e2848>

Exit – This will exit Sync and close the service

NOTE: *AdSync.exe is the service that is running for Sync.*

Autodesk 360 Sync works with Autodesk 360 WEB. You need Autodesk 360 WEB to work with Autodesk 360 Sync.

That is far from everything about Autodesk Sync but it's a good starting point. Now let's take a look at Autodesk 360 WEB.

Autodesk 360 WEB:

What is Autodesk 360 WEB and how can I use it?

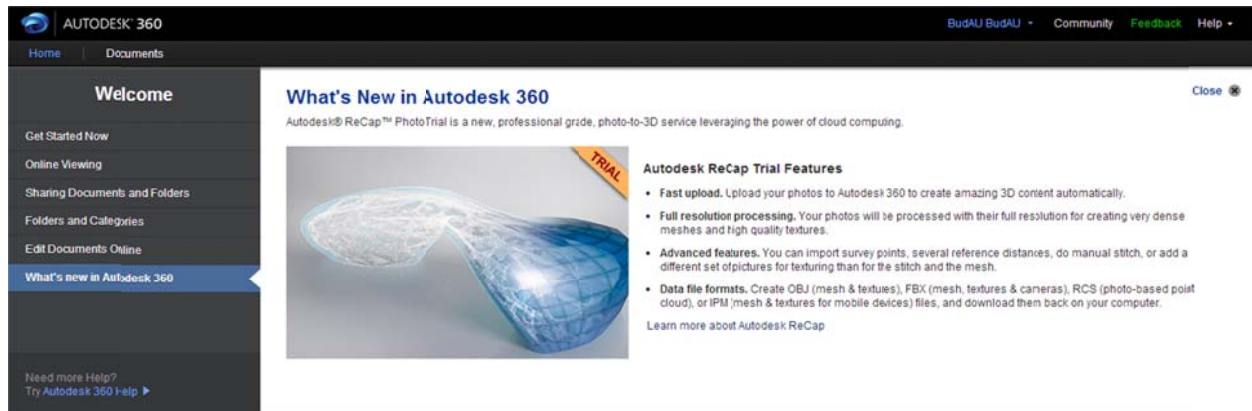
<http://360.autodesk.com>

Autodesk 360 WEB is a place to post your files so that they are in a central location. Once the files are uploaded, you have multiple options. You can view the files as long as they are part of a supported file type. You can also share these files with others as a private share as a public share. You can also decide if you just want to share or if you want the other person to have full access. Note that once you share a folder, any sub folders are automatically shared to the same people.

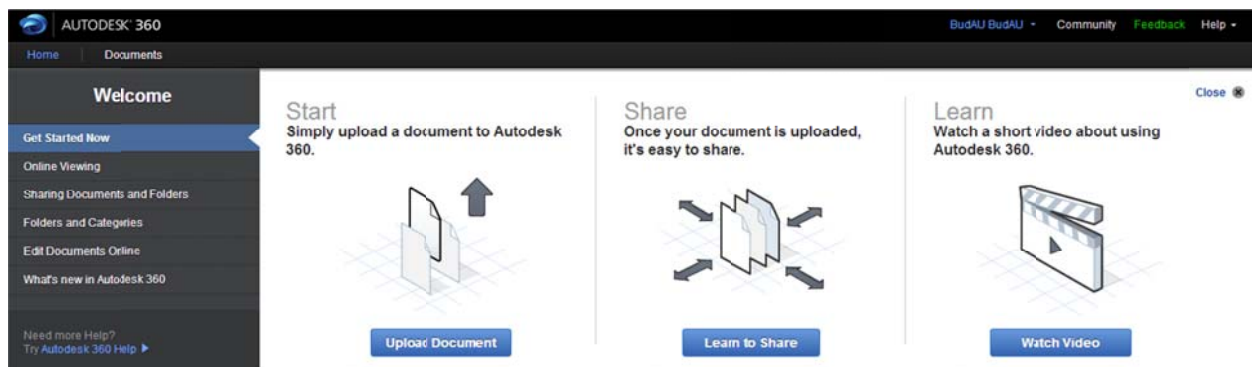
What browsers should I use with Autodesk 360 WEB?

With Autodesk 360 WEB you want to use Chrome or Firefox. Internet Explorer can be used from some very basic features, but if you want to view 3D drawings and be able to use Drag and drop then you want to install Chrome or Firefox. They both work great, but I find that I tend to like Chrome a little more these days.

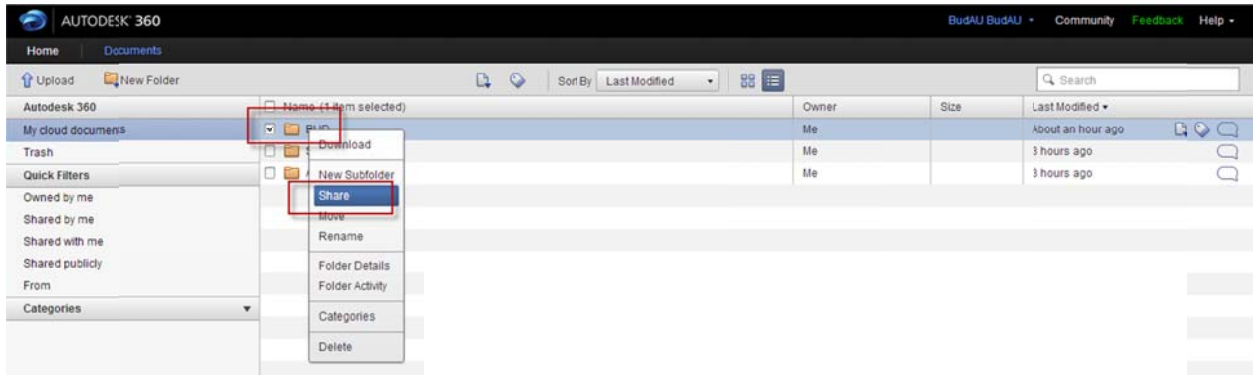
This is what you see the first time you log into Autodesk 360 WEB



Getting Started



Autodesk 360 Sharing

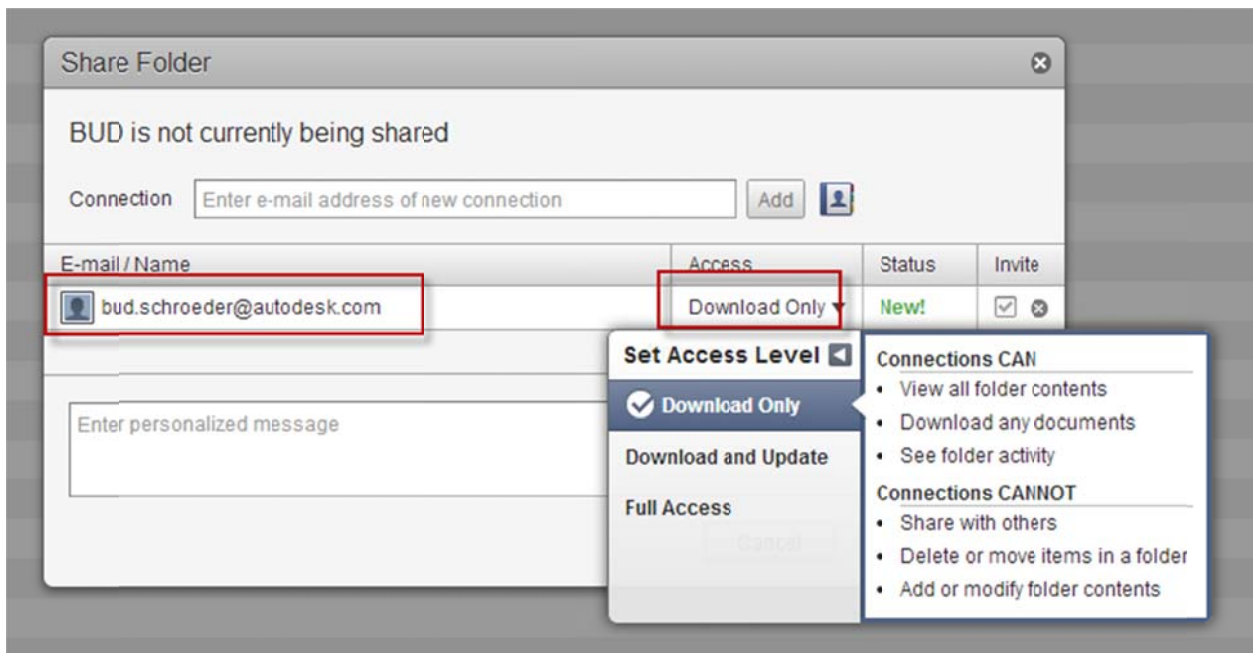


Sharing Options:

With Autodesk 360 you can share folders or just files.

NOTE: You cannot share sub folders, you have to share the root level folder. Anyone that has rights to the root level folder will automatically have rights to the sub level folders.

Share Folder



You can share files as view only or full access including download. Once you select the folder and right click on it you can start to add people to share.

NOTE: *You can add people to the address book as you go, but you are not able to import a list. Once you have added people you can use the address book to access existing people for future sharing.*

Anyone that you want to work with in a private share will need to have their own Autodesk 360 account. If you are a subscription member you are eligible for 25 gigs. If you are using a free account you will get 5 gigs.

There are three types of shares or access level. Download Only, Download and Update, and Full Access.

Download Only

Connections CAN

View all folder contents

Download any documents

See folder activity

Connections CANNOT

Share with others

Delete or move items in a folder

Add or modify folders contents

Download and Update

Connections CAN

Delete or move items in a folder

Add or modify folder contents

View all folder contents

Download any document

See folder activity

Connections CANNOT

Share with others

Full Access

Connections CAN

Share with others

Delete or move items in a folder

Add or modify folder contents

View all folder contents

Download any documents

See folder activity

Save and Invite

Share Folder

BUD is not currently being shared

Connection

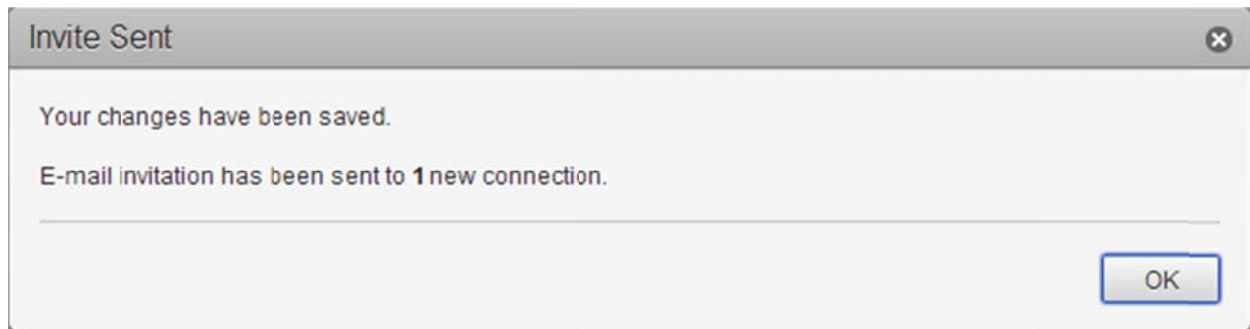
E-mail / Name	Access	Status	Invite
bud.schroeder@autodesk.com	Full Access	New!	<input checked="" type="checkbox"/>

1 new connection entered; 1 total connection

Be sure to take a look at the Autodesk 2013 drawings before we get to AU

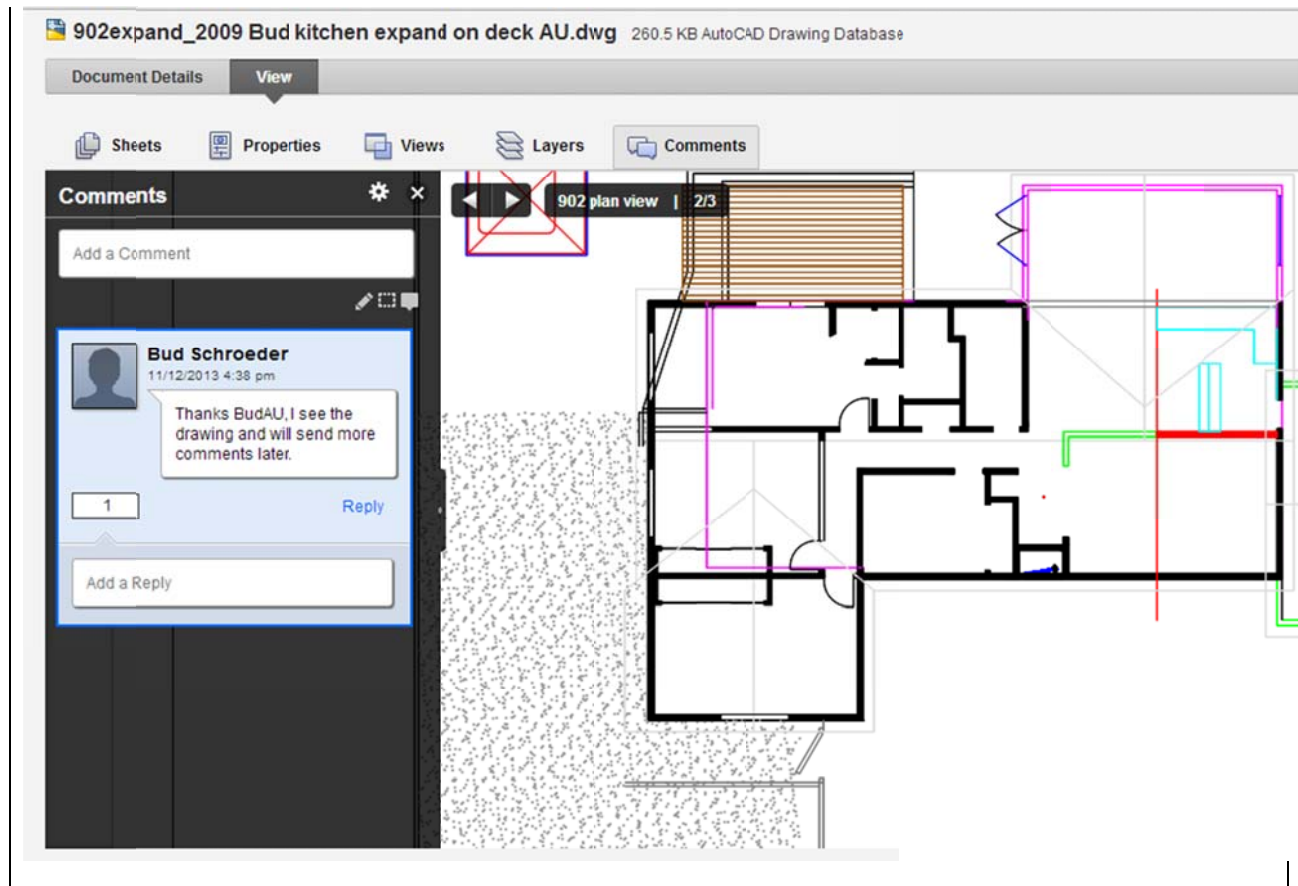
Once you have added the people you want to share the folder with and the type of share, you will see what you have chosen. In my case, I created a full access share. Now just click Save and Invite.

Invite Sent

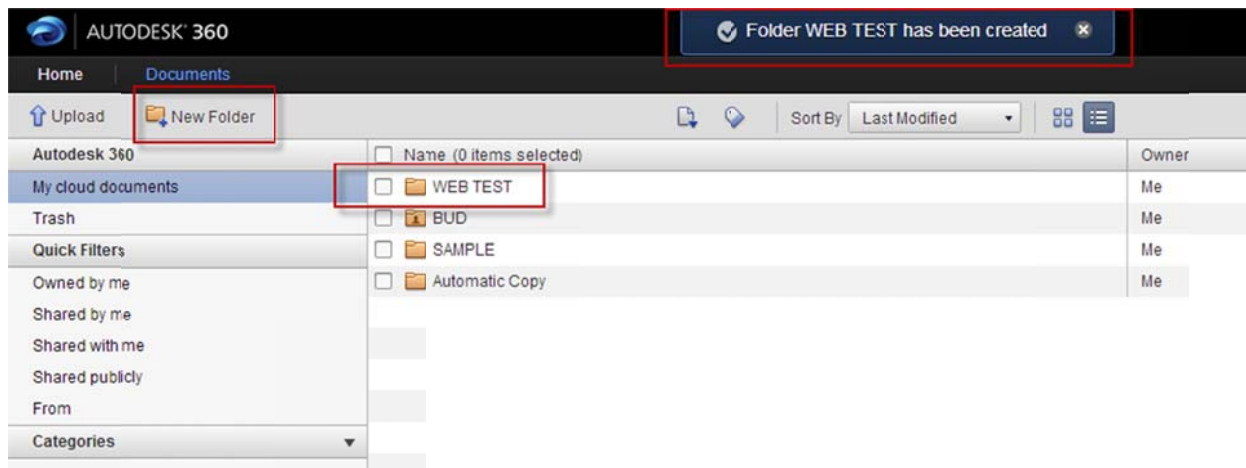


Now you will see the confirmation of your share has been sent.

What Bud sees when he accepts the share

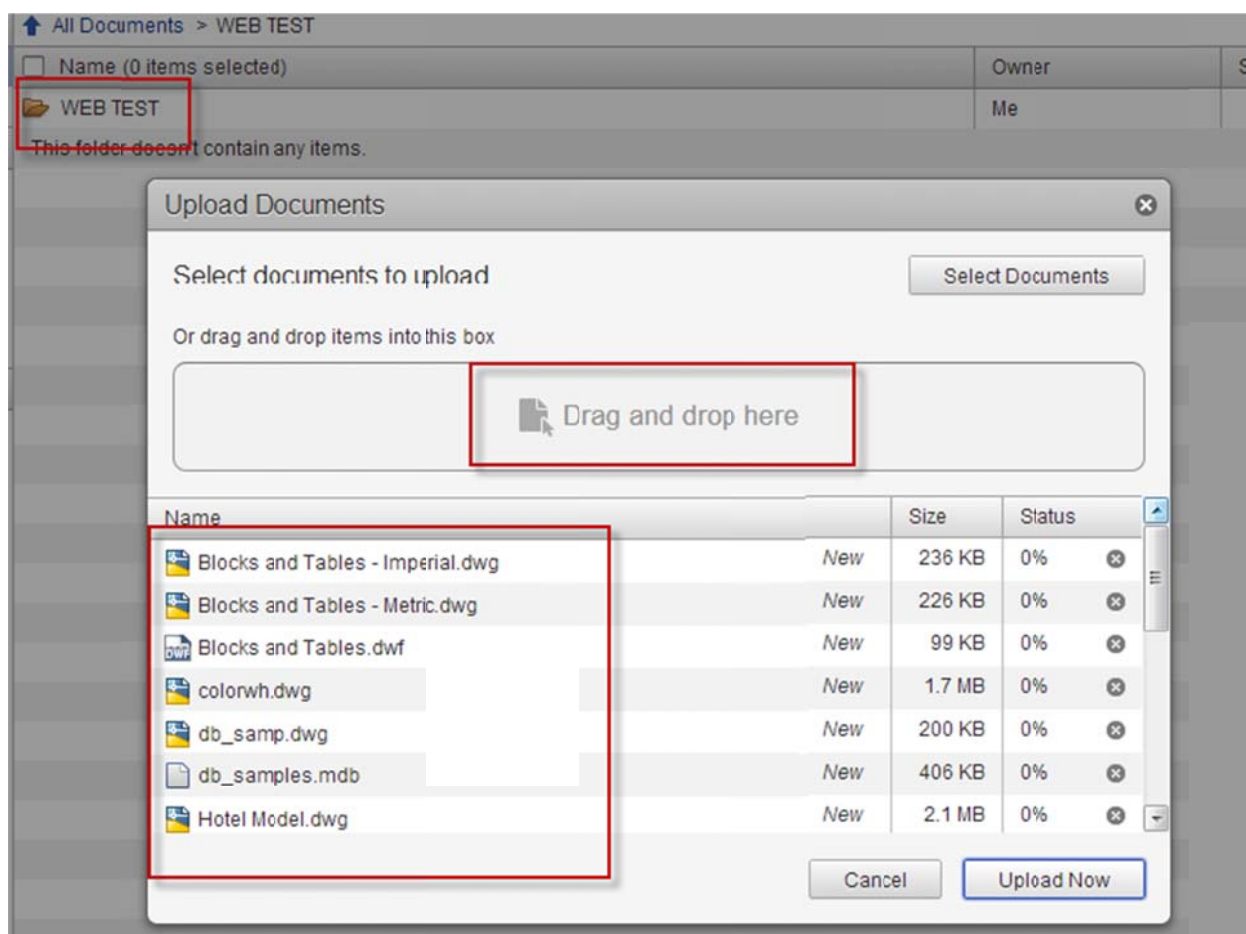


Autodesk 360 WEB Upload



You can create folders from the New Folder option. Then if you are using Chrome or Firefox you can drag and drop your files into the folder.

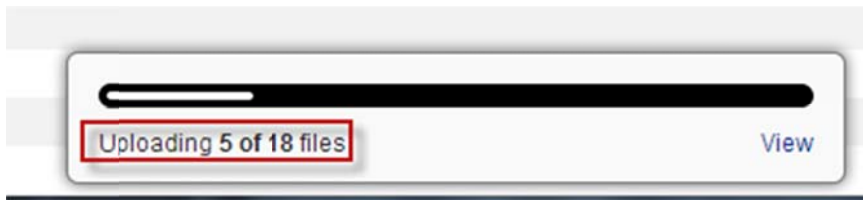
Drag and Drop files using Chrome or Firefox



You can select multiple files and then drag them onto Autodesk 360 WEB. That will upload the files and start the translation of the files.

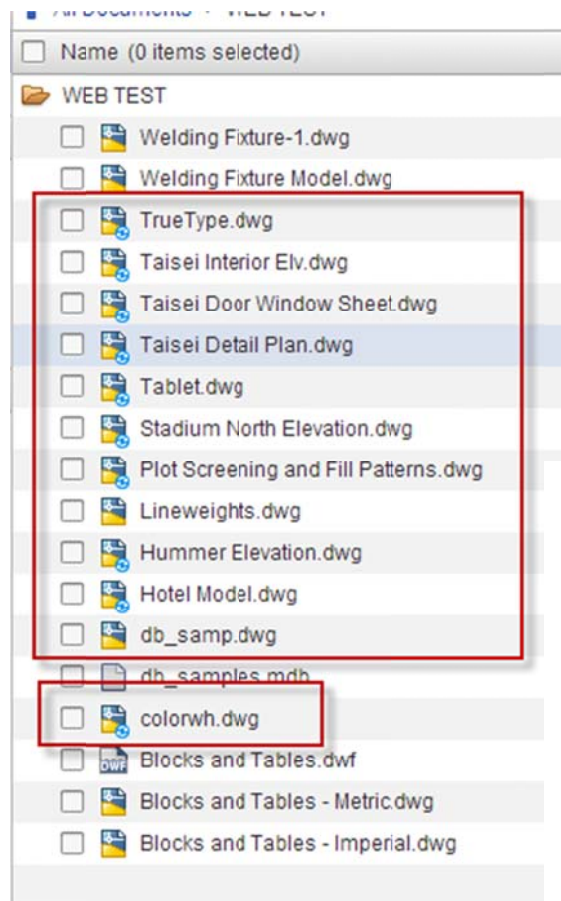
NOTE: Translation is what happens on the server side so that the files can be viewed on your browser.

Upload status bar

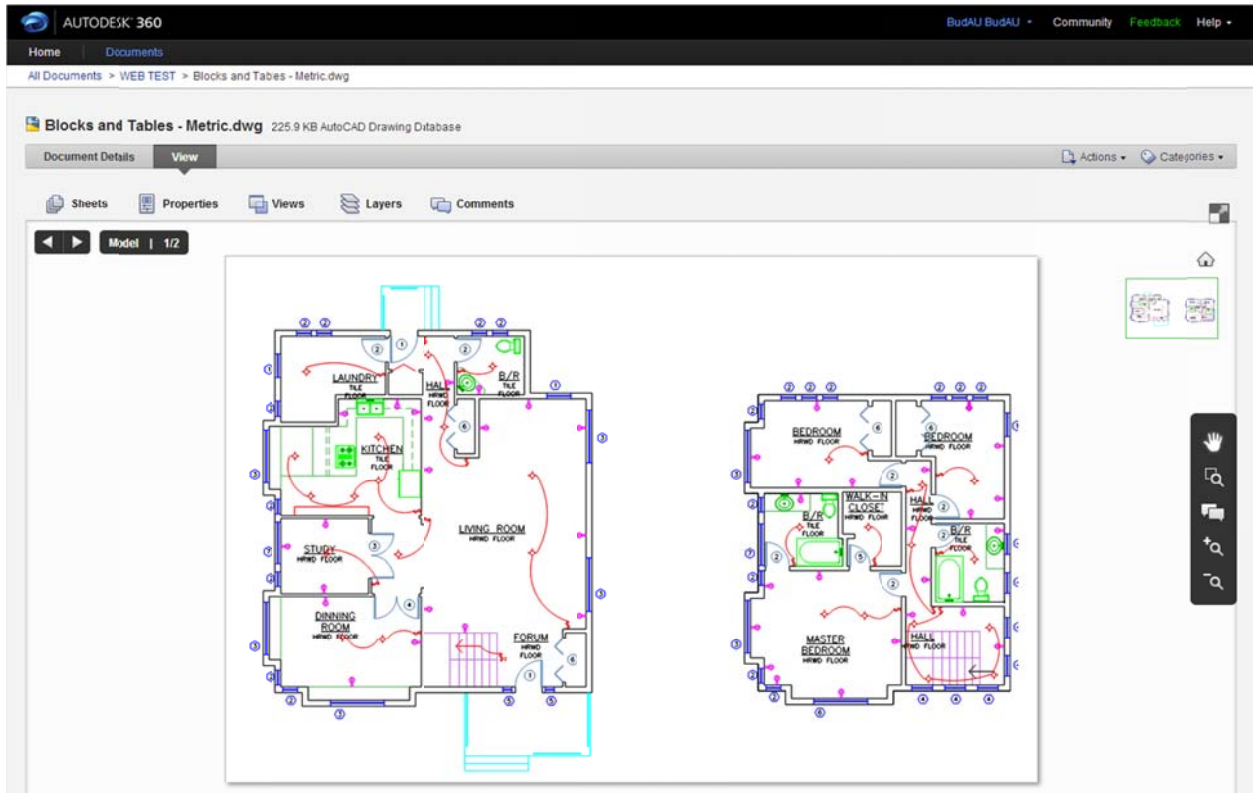


The upload status shows how many files are uploading, the total and a status bar.

Icon status showing that the files are translating.



A translated DWG File after drag and drop on Chrome



Once you have uploaded your files to Autodesk 360 you can then view them. As long as the icon for the file is not

Document Details

Document Details

Blocks and Tables - Metric.dwg 225.9 KB AutoCAD Drawing Database

Document Info

Info

225.9 KB AutoCAD Drawing Database
Last Modified 10 minutes ago
Owned by Me

Recent Activity

Add a comment

BudAU BudAU viewed Blocks and Tables - Metric.dwg online 5 minutes ago

BudAU BudAU uploaded Blocks and Tables - Metric.dwg 10 minutes ago

Sharing

Private Sharing

This document is not being shared with anyone else.

E-mail / Name	Access	Status
BudAU BudAU (Owner)	Full Access	Active

Public Sharing

☐ OFF Public Share is OFF. This document can only be accessed by the people listed above.

[Edit Online](#) [Download](#) [Edit Sharing](#)

Clicking on the document Details will show a lot of information about the file that is uploaded to the Autodesk 360 WEB Site.

What file types can I view:

See the table at the bottom of the document for a list of supported file types. You can see the file name, file size, Layouts, document activity and sharing if you have shared it. There is also an Edit Online button and clicking on that will take you to the AutoCAD 360 site to edit the file.

NOTE: You will need to have an AutoCAD 360 site to be able to edit the file online.

You can also enable both private and public sharing.

Public Sharing

The screenshot shows the 'Sharing' window in Autodesk 360. It has a title bar with 'Sharing' and an 'Edit Sharing' link. The main section is titled 'Private Sharing' with the text 'This document is not being shared with anyone else.' Below this is a table with columns 'E-mail / Name', 'Access', and 'Status'. The table contains one row for 'BudAU BudAU (Owner)' with 'Full Access' and 'Active' status. Below the table, there is a 'Public Sharing' section. It includes a toggle switch set to 'ON' and a URL 'http://a360.co/1aoatdt'. To the right of the URL are three buttons: 'Copy', 'E-mail', and 'Preview'. Below the URL, it says 'Public Share is ON. This document can be accessed by anyone with the link.' There is a checkbox labeled 'Allow source document to be downloaded or copied' which is checked, with a note 'In addition to viewing online, others will be able to download it or copy it to their Autodesk 360 account.' At the bottom, there is a button labeled 'Embed this document in your website'.

E-mail / Name	Access	Status
BudAU BudAU (Owner)	Full Access	Active

Public Sharing

☒ ON <http://a360.co/1aoatdt> Copy E-mail Preview

Public Share is ON. This document can be accessed by anyone with the link.

☒ Allow source document to be downloaded or copied
In addition to viewing online, others will be able to download it or copy it to their Autodesk 360 account.

[Embed this document in your website](#)

Public sharing is a great way to share a file with anyone and they do not need to have an Autodesk 360 account. Autodesk 360 will create a link that you can copy or eMAIL to anyone that you want to see the file. You can also preview what the file will look like.

Embedding the file into a WEB Site

The screenshot shows the 'Embed Document Viewing' dialog box. It has a title bar with 'Embed Document Viewing' and a close button. The main content area has a red box around the text 'Embed the contents of the "View" tab into your own website.' Below this, it says 'Select size to embed' and shows three size options: '640 x 480', '800 x 600' (which is selected and highlighted in blue), and '1024 x 768'. Each size option has a corresponding thumbnail image. Below the size options, there is a text area with the instruction 'Copy and paste the html below into your website' and the following HTML code: `<frame scrolling="no" frameborder="0" hspace="0" src="https://360.autodesk.com/Public/Embed?"`. At the bottom right, there is a 'Close' button.

Embed Document Viewing

Embed the contents of the "View" tab into your own website.

Select size to embed

640 x 480 800 x 600 1024 x 768

Copy and paste the html below into your website

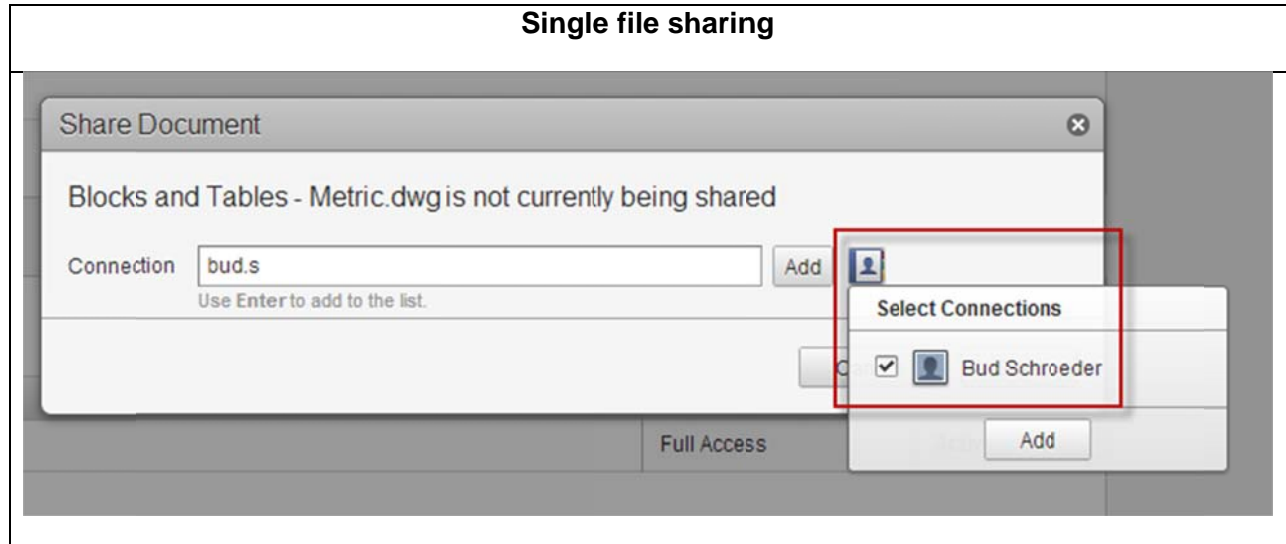
```
<frame scrolling="no" frameborder="0" hspace="0" src="https://360.autodesk.com/Public/Embed?"
```

Close

WEB Code for embedding

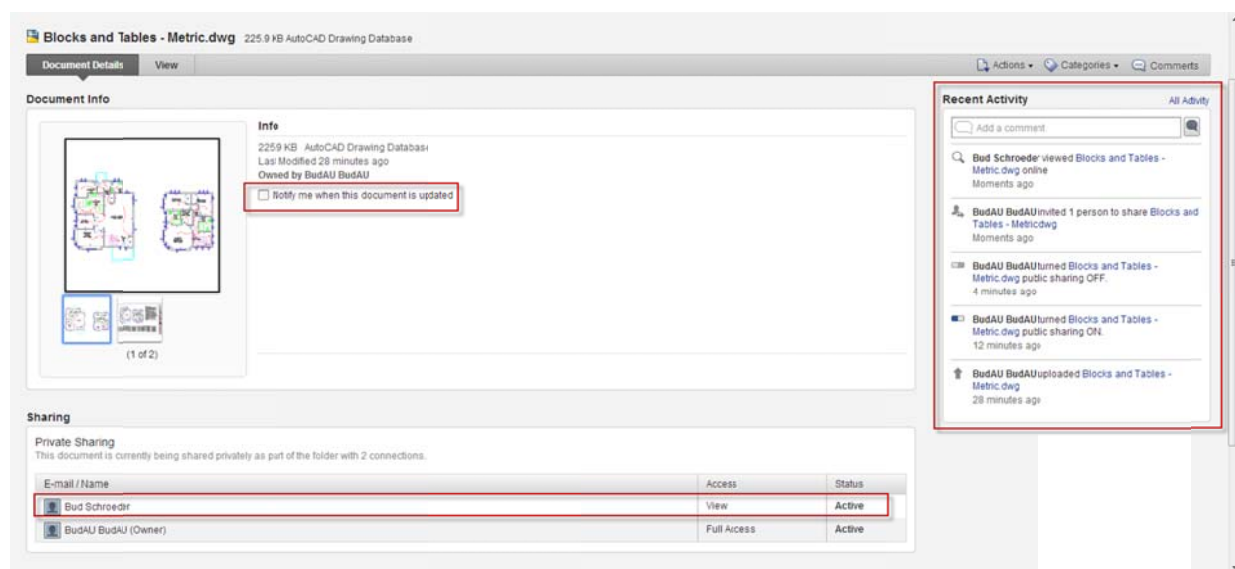
```
<iframe scrolling="no" frameborder="0" hspace="0"  
src="https://360.autodesk.com/Public/Embed?hash=3e2214697b1e4b72aaa553ab8a08dfbc"  
width="1024" height="768" allowtransparency="true" style="border: medium none;"></iframe>
```

Single file sharing

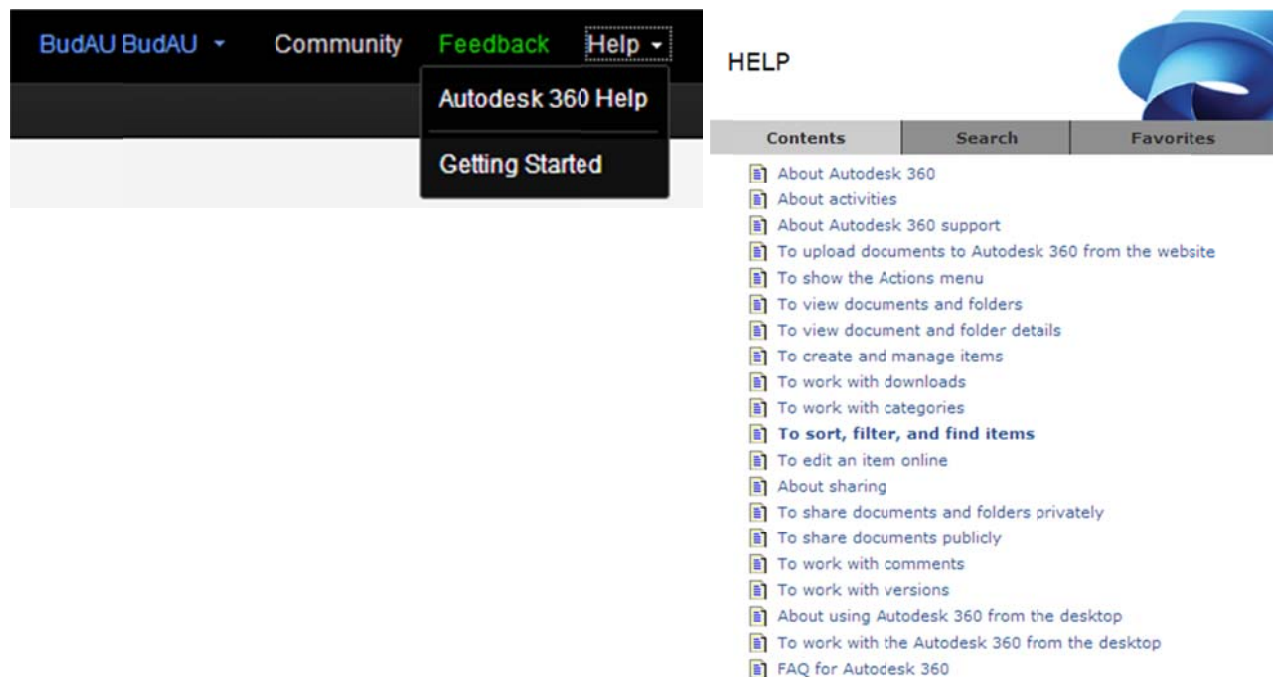


Single file sharing is the same as folder sharing except now you're sharing a single file

Single file share view only



Autodesk 360 Help



Autodesk 360 has an excellent help system that is updated all the time. Be sure to go to the upper right hand corner and click on Help or Getting Started.

Autodesk 360 WEB can be used to post your files to the WEB and access from anywhere that has WEB access. It makes a great viewer and is capable of viewing many different file types. So if you have a client that you want to be able to view a drawing file, and they don't have AutoCAD. You could have them create a free Autodesk 360 account and then share the files with them. You have options of public or private and also the ability to add comments as you go.

Autodesk 360 Mobile:

What is Autodesk 360 Mobile and how can I use it?

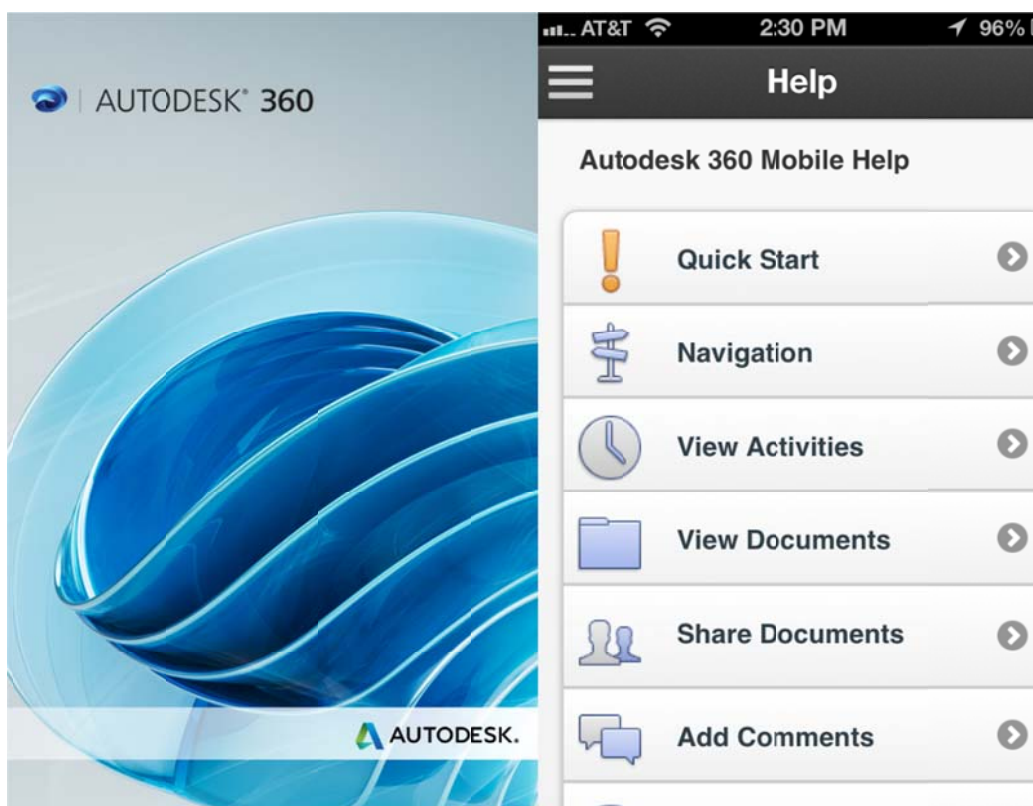


Autodesk 360 Mobile is a viewer that is designed to work with Mobile devices. This is a free app that works with your Autodesk 360 WEB Site. Files that you have uploaded to the Autodesk 360 WEB Site can be viewed on your mobile device. Right now Autodesk supports Android and iOS. You also have a choice of phone or tablet with this app. A tablet is a better

option as it allows you to use screen for viewing. But if you just want to show someone a drawing quickly the phone works great as well.

NOTE: If you are unable to view a file on the Autodesk 360 WEB Site you will not be able to view it on your mobile device.

Autodesk 360 Mobile

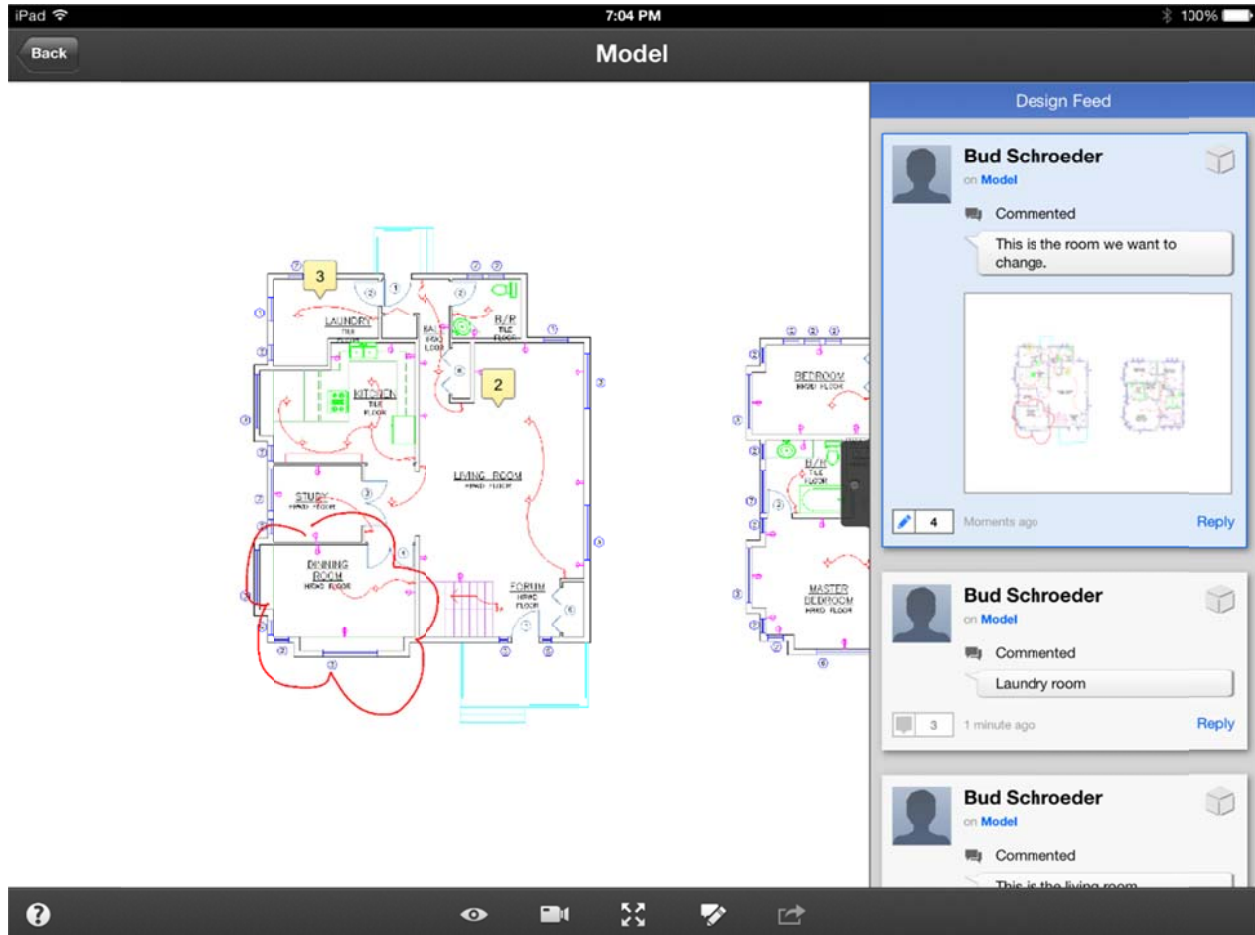


Once you log into Autodesk 360 Mobile you will see it is very powerful. There is also a very detailed help system in case you need more details.

Just like Autodesk 360 WEB, you can share from your mobile device, add comments. You can also add markup.

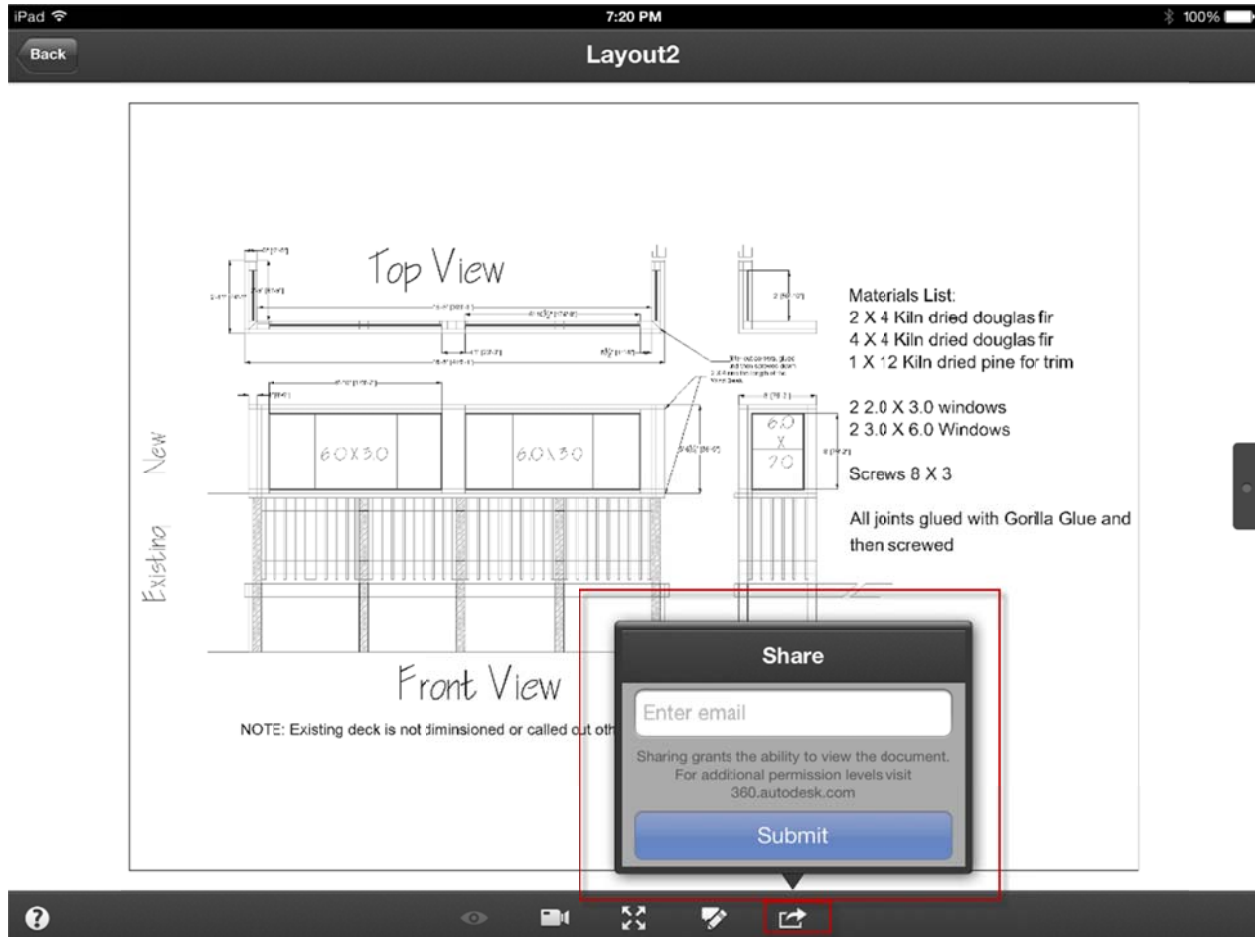
NOTE: Markup from mobile can be seen in AutoCAD Design Feed, but not on Autodesk 360 WEB.

Autodesk 360 Markup



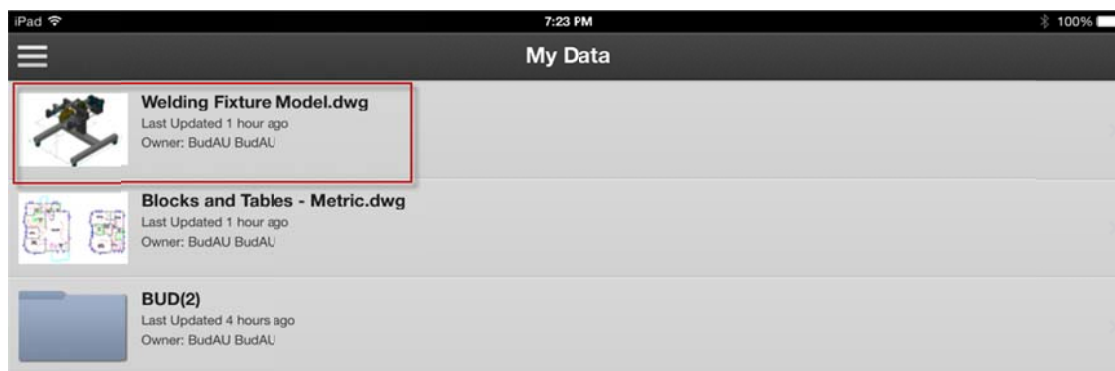
You can use your mobile device to do markup on your drawing. There are comments and tags as well as freehand markup.

Sharing files from inside of Autodesk 360 Mobile



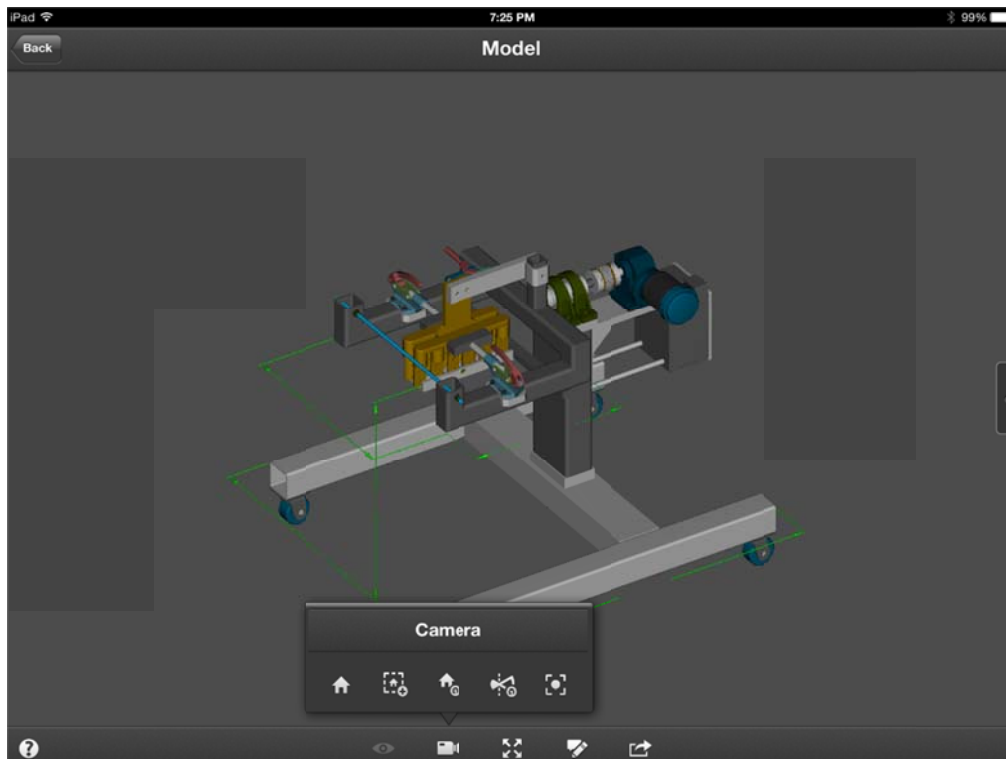
You can share the files from your mobile device, but you will not have the options that you have with Autodesk 360. I would suggest that you share files before you view them on a mobile device.

Share will show up on the mobile device



When you share the file from the WEB Site, the share will show up when you log into your mobile device.

Viewing 3D files from Autodesk 360 Mobile



You can view the 3D files on the mobile device. You can also rotate the drawing and change the views. This is done with the camera feature.

With Autodesk 360 Mobile you can share files with other users, or just view the files. There is also a lot of power in using the markup feature including the comments. Autodesk 360 Mobile needs Autodesk 360 WEB to be able to view any files. So files need to be uploaded to the Autodesk 360 site before you can view them on your mobile device.

You can tie all these together. You could use Autodesk 360 Sync to sync a project to the Autodesk 360 WEB Site. Add sharing from the WEB Site and then ask your client to view the file from his mobile device such as an iPad. The client can markup the drawing and add comments. Then send the file back to you for changes.

Links that might be helpful:

For Customer Feedback on Autodesk 360 WEB, Mobile and Sync:

<http://feedback.autodesk.com>

Autodesk Product Support WEB Site:

<http://www.autodesk.com/support>

Autodesk Public discussion groups:

<http://forums.autodesk.com>

Autodesk BETA Programs:

<http://forums.autodesk.com>

Autodesk User Group International:

<http://www.augi.com>

Supported file types for Autodesk 360

Many file types can be viewed and perhaps edited online in your browser without needing to download them first.

3DM

AFE¹, AFEM

CATPART

DWF, DWFx

DWG^{1,2}

F3D

IAM, IDW, IPT

IGES, IGS

Instruction

JPG¹

NWD

PDF

PNG and other common image types

RCP

RVT2

Showcase presentation (HTML 5)

SIM, SIM360

SLDPRT

STP

VTFX

WIRE

X_B, X_T

¹ File format supports editing online.

² File format supports rendering.