

# RC7374 - Meet the Reality Computing Innovators!

ReCap Booth #268 – Wednesday, Dec 3, 6:30 – 7:30 pm

Dominique Pouliquen

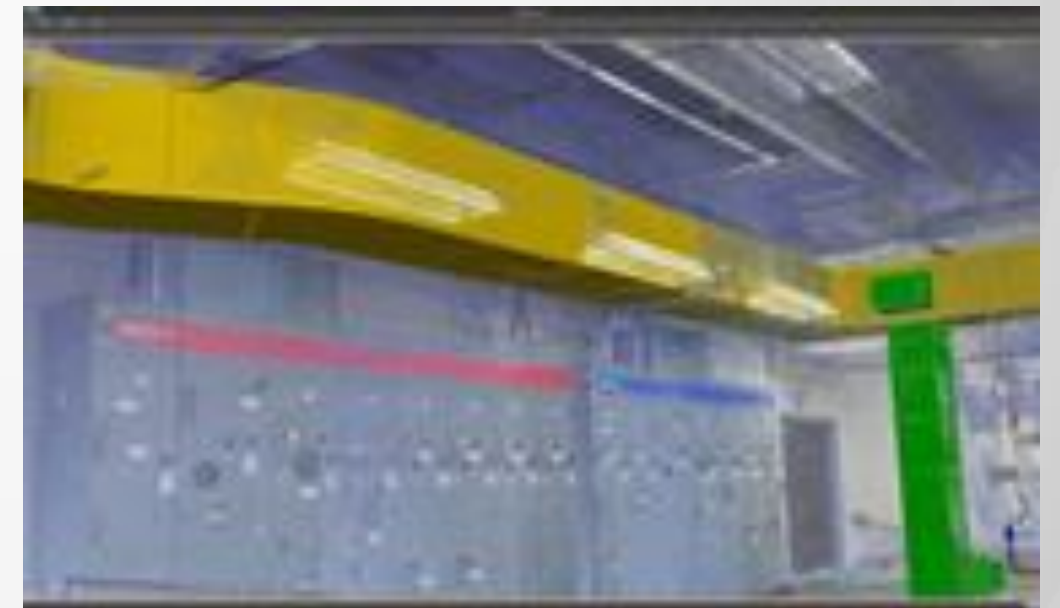
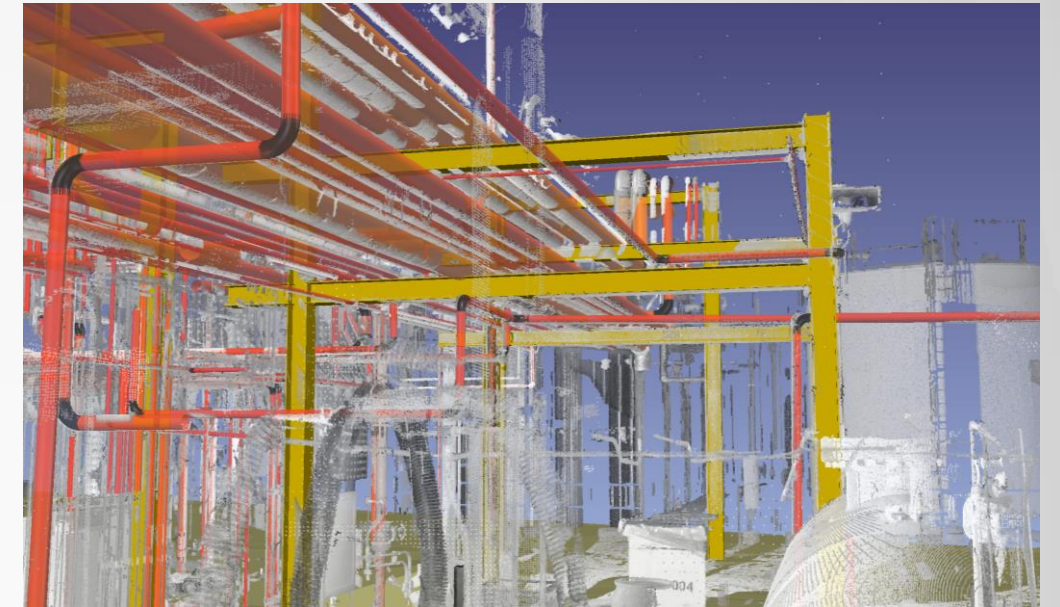
Marketing Director, Reality Solutions, Autodesk

#recap360

# ClearEdge3D, Inc. / EdgeWise BIM Suite

## EdgeWise BIM Suite

- EdgeWise automates the process of modeling as-built conditions from laser scan point clouds. Users report up to a 70% reduction in modeling time using the EdgeWise automated software. EdgeWise is fully integrated with Revit so EdgeWise model elements export to Revit as family objects.
- Use cases
  - Creates as-built BIMs of MEP systems, steel and concrete structure, pipes, ducting, conduit, walls and windows
  - Exports to Revit as family objects
- Booth #283
- Contact
  - Alex Demogines [alex.demogines@clearedge3d.com](mailto:alex.demogines@clearedge3d.com)





# CultLab3D – On the verge of 3D mass digitization

## CultLab3D

- Type of solution
  - Worldwide first, fast and economic 3D mass digitization pipeline
- Specifications
  - 3D digitization in under 10 minutes
- Use cases
  - 3D Scanning of entire collections of cultural heritage artifacts
- Booth #
  - 268
- Contact person
  - Pedro Santos, Fraunhofer IGD, Germany
  - [pedro.santos@igd.fraunhofer.de](mailto:pedro.santos@igd.fraunhofer.de)
  - +4916097804959



(photo: Norbert Miguletz; © Liebieghaus Skulpturensammlung)



(photo: Norbert Miguletz; © Liebieghaus Skulpturensammlung)

## Phi.3D Software

- Dimensionally accurate mobile 3D mapping
  - SLAM and 3D reconstruction engine for mobile devices
- Specifications
  - Real-time feedback
  - Highly compressed output
  - Compatible with industry standard formats
  - Measurement and viewing on the tablet
- Use cases
  - BIM Data Collection & Analysis
  - As-Built Documentation & Industrial Facility Management
  - Custom Design & Renovation
  - Crime Scene Forensics & Accident Reconstruction
  - Archaeological Documentation & Digital Preservation
- Booth #280
- Contact
  - Tom Greaves, CMO
  - +1 978-766-7050, tom@dotproduct3d.com



Phi.3D operating on the DotProduct DPI-7 handheld 3D imager



T-Rex, Tesla Model S, Teddy, & Kitchen Scans



## Point Sense for AutoCAD, VirtuSurv for Revit

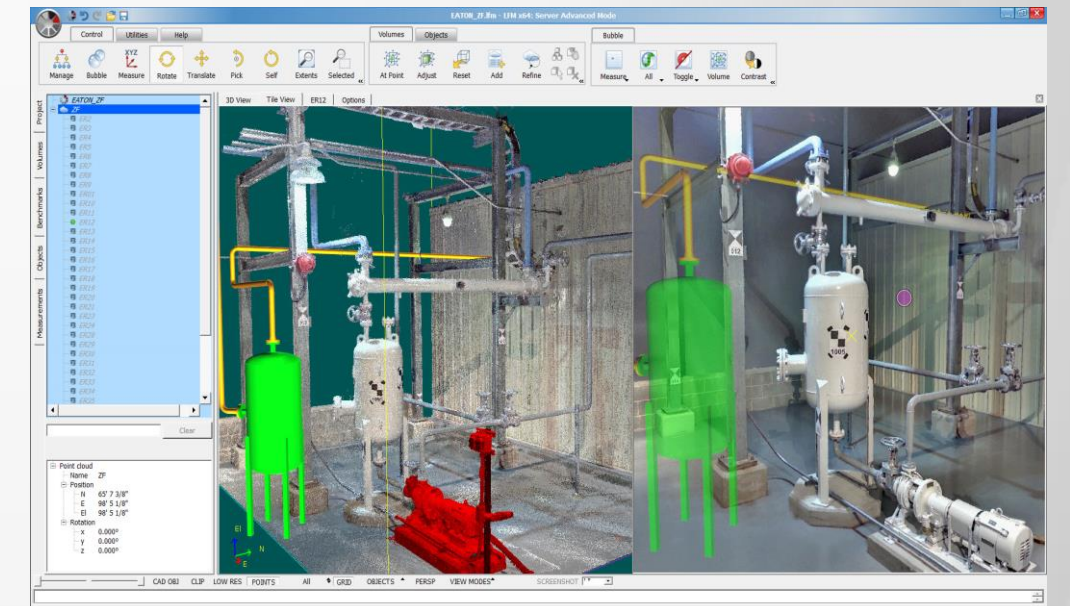
- Type of solution
  - From point clouds to building and plant models
- Specifications
  - Application for AutoCAD and Revit
  - Supports native rcp/rcs format
  - ReCap Photo integration into AutoCAD
- Use cases
  - Industry specific solutions for laser scanning within the AEC industry.
  - Plant 3D, Revit models from point clouds, tank analysis, ...
- Booth #242
- Contact person
  - Scott Diaz ([scott.diaz@kubitusa.com](mailto:scott.diaz@kubitusa.com), +1 409 8931668)
  - Joerg Braunes ([joerg.braunes@kubit.de](mailto:joerg.braunes@kubit.de), +49 163 7176751)



# LFM Software Limited / LFM Server

## LFM Server

- 3D Data Capture Point-Cloud Solution
  - Open to Bringing in Multiple Laser Scan and Other Image Formats, and Open to be Viewed in Multiple CAD Formats.
- Specifications
  - One Deliverable Source Using Infinite Core Technology, Integrated Bubbleviews, Demolition, Clash-Detection, Measurement, Visualize 3D CAD Models, and Export to AutoDesk ReCap.
- Use cases
  - Scanning Medium to Large Facilities to be Used in a Multi-User Collaborative Work Environment.
- Booth #262
- Contact Matthew Craig
  - Email – [Matthew.Craig@lfm-software.com](mailto:Matthew.Craig@lfm-software.com)
  - Phone - +1 (832) 372-6212





# Skycatch



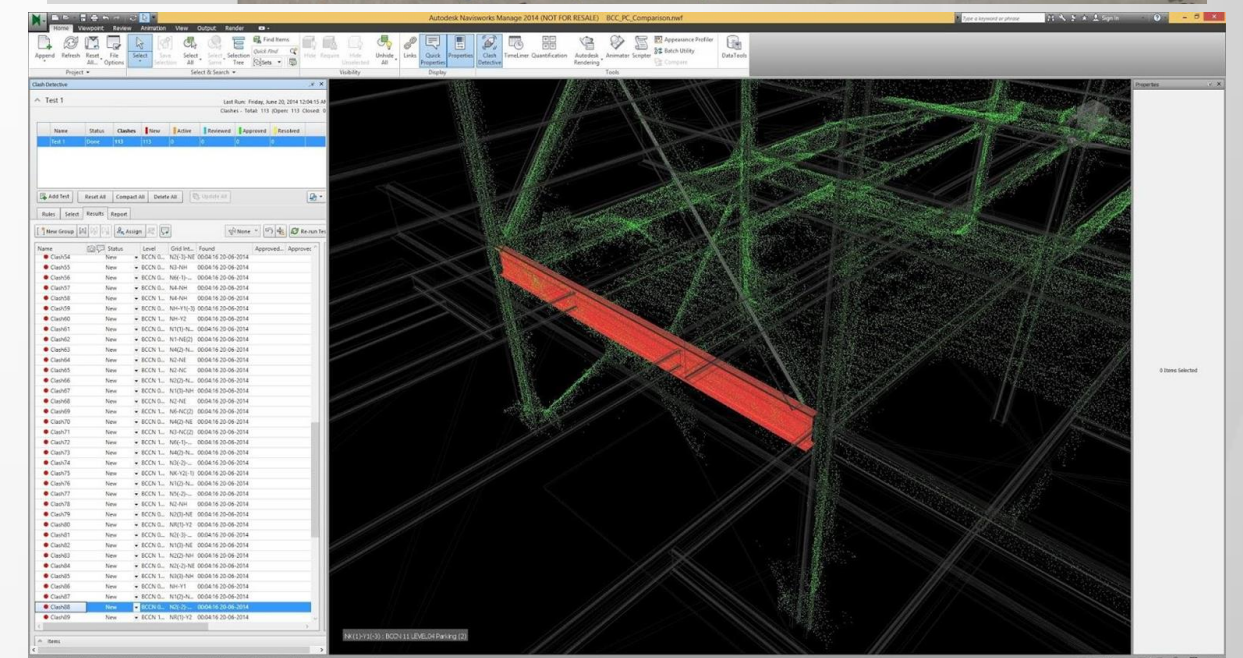
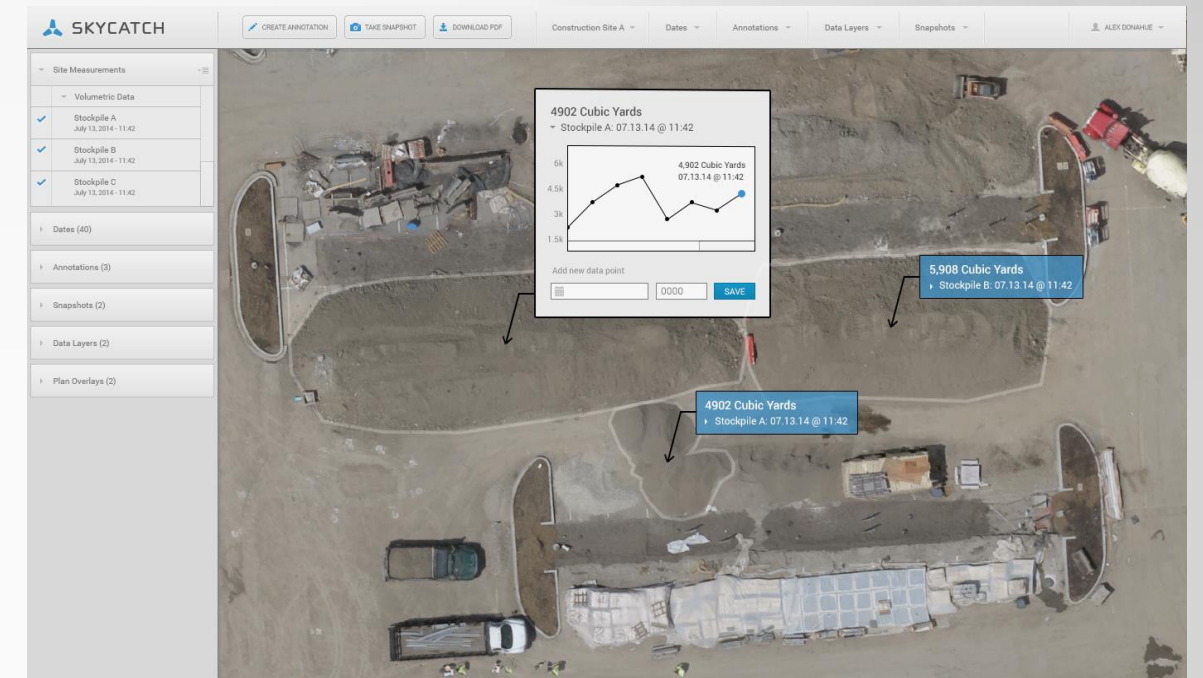
- Technology Type
  - Automated progress tracking for construction
- Specifications
  - High resolution point cloud delivered via fully autonomous UAV - no pilot needed
  - Automated progress tracking via novel point cloud / parametric model collision detection
  - Currently deployed in some of the largest construction projects in the world

- Use Cases
  - BIM for construction, oil & gas, & infrastructure

- Booth # 281

- Contact

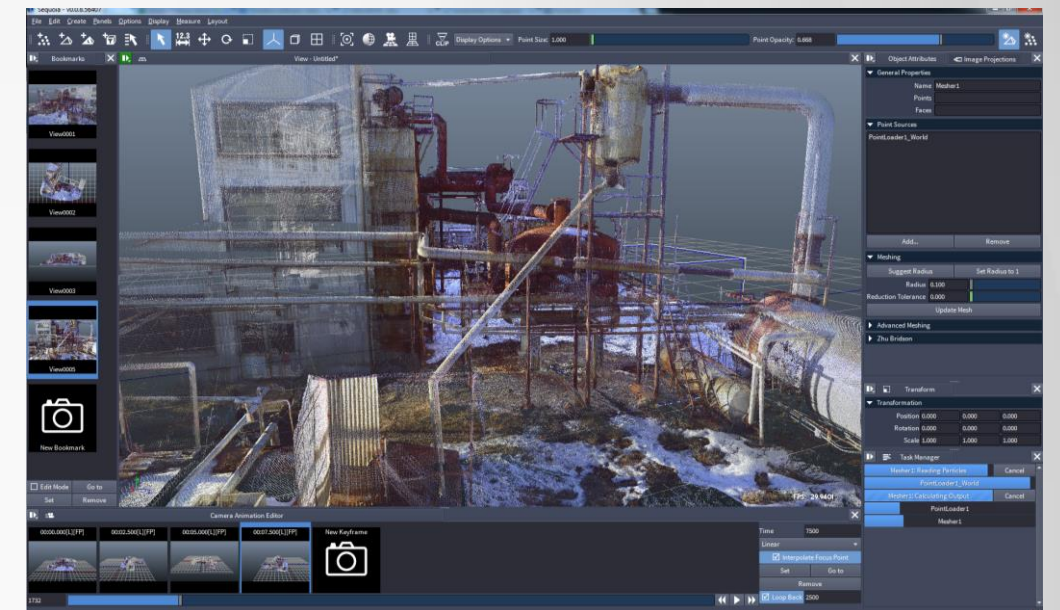
Mark Heynen, SVP, Client Operations  
[mark@skycatch.com](mailto:mark@skycatch.com)



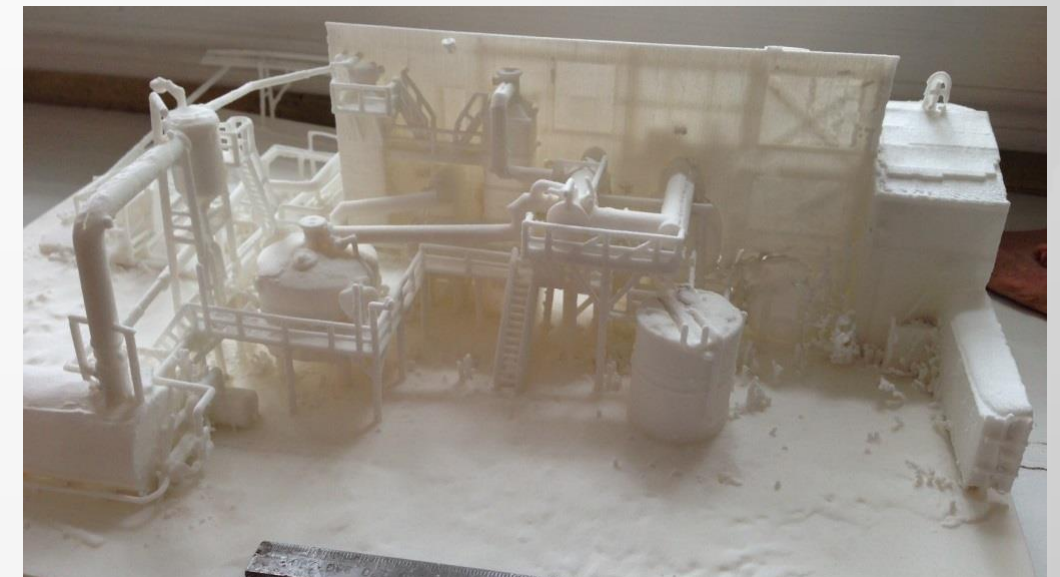
# Thinkbox Software

## Sequoia

- Point Cloud Meshing
  - Quickly generates textured triangle meshes from large point clouds
  - Use Image Projection for superior color and texture
  - Gas Plant Example: 26M points, 1m 19s to make 28M faces
- Specifications
  - Supports common point file formats (.las, e57, pts, ptx)
  - Generates optimized meshes
  - Saves common mesh formats (.obj, .stl)
  - Use remote machines to do computation of large data
- Use cases
  - Scan to Print, data visualization, virtual sets, vfx
- Booth #282
- Contact person
  - Ian Fraser
  - [ianfraser@thinkboxsoftware.com](mailto:ianfraser@thinkboxsoftware.com)
  - (267) 357-8498



Sequoia meshing the Turner Valley Gas Plant – 3D Mobile Scan



3D printed model of the Gas Plant – 3D Mobile Scan