



# BIM for Manufacturers Bridging the Gap

Peter Maxwell-Stewart  
Application Engineer

BIM

Join the conversation [#AULondon](#)

 **AUTODESK**  
UNIVERSITY



# About the speaker

## Peter Maxwell-Stewart

- Application Engineer with Cadline for last 18 Months
- Previously CAD and Technical Manager supplying building products to the National House Builders
- Autodesk Inventor Certified Professional



cadline

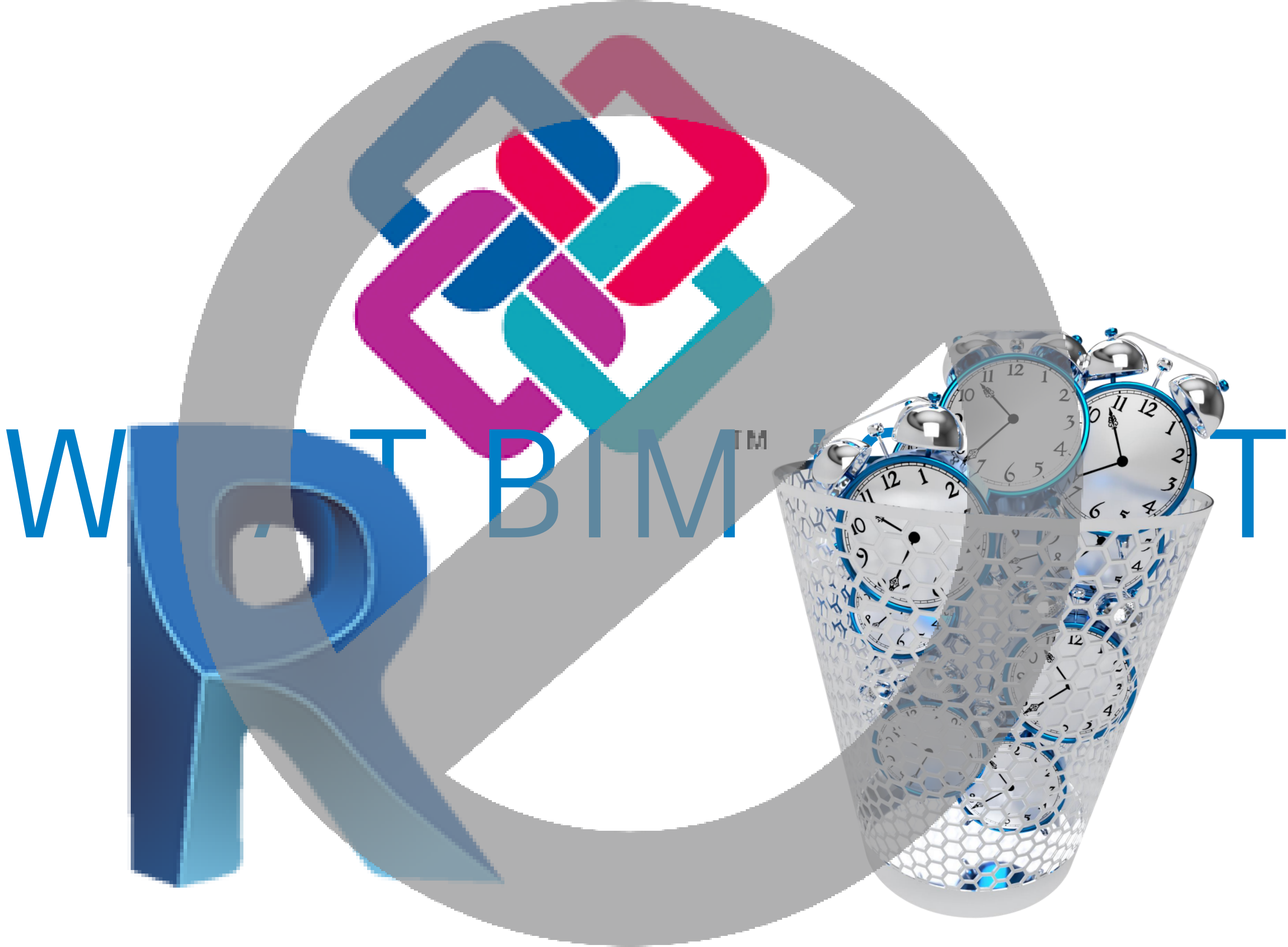
# Workflow overview

*Help bridge the BIM gap between MFG and AEC by using both Revit and Inventor to create and publish BIM level 2 compliant models*

## Learning Objectives

- Preparing views for Inventor
- Using Revit geometry to create manufacturable content
- Publishing BIM level2 compliant models
- Republishing data back to Revit using the project co-ordinates







# What is BIM in the UK?

- Idea for better collaboration
- April 2016 Government Mandate
- PAS1192-2
- Great Marketing Tool
- Early specification
- Once specified its hard to change
- Longevity – Entire lifetime of building





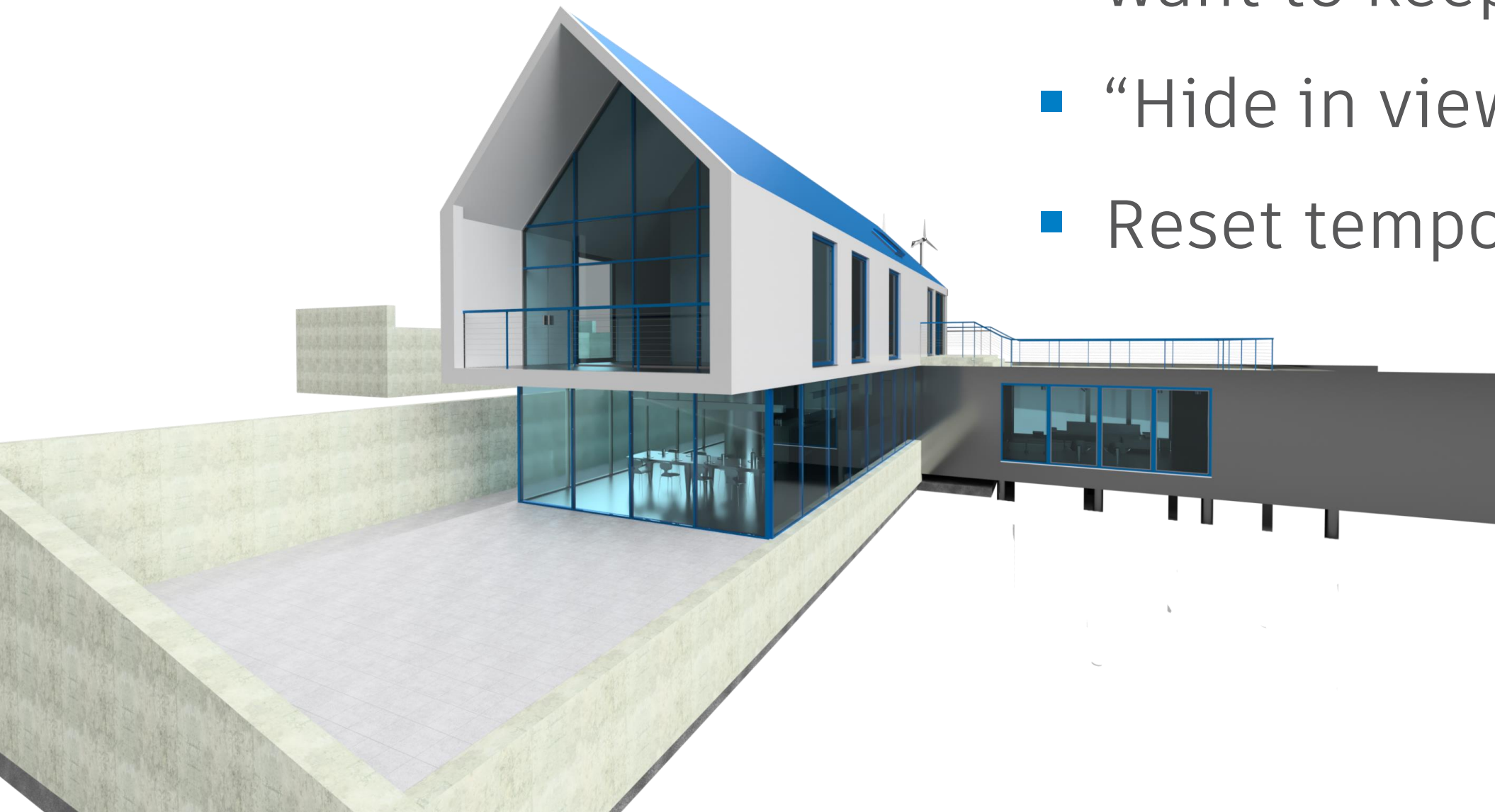
# The workflow



# Preparing the model

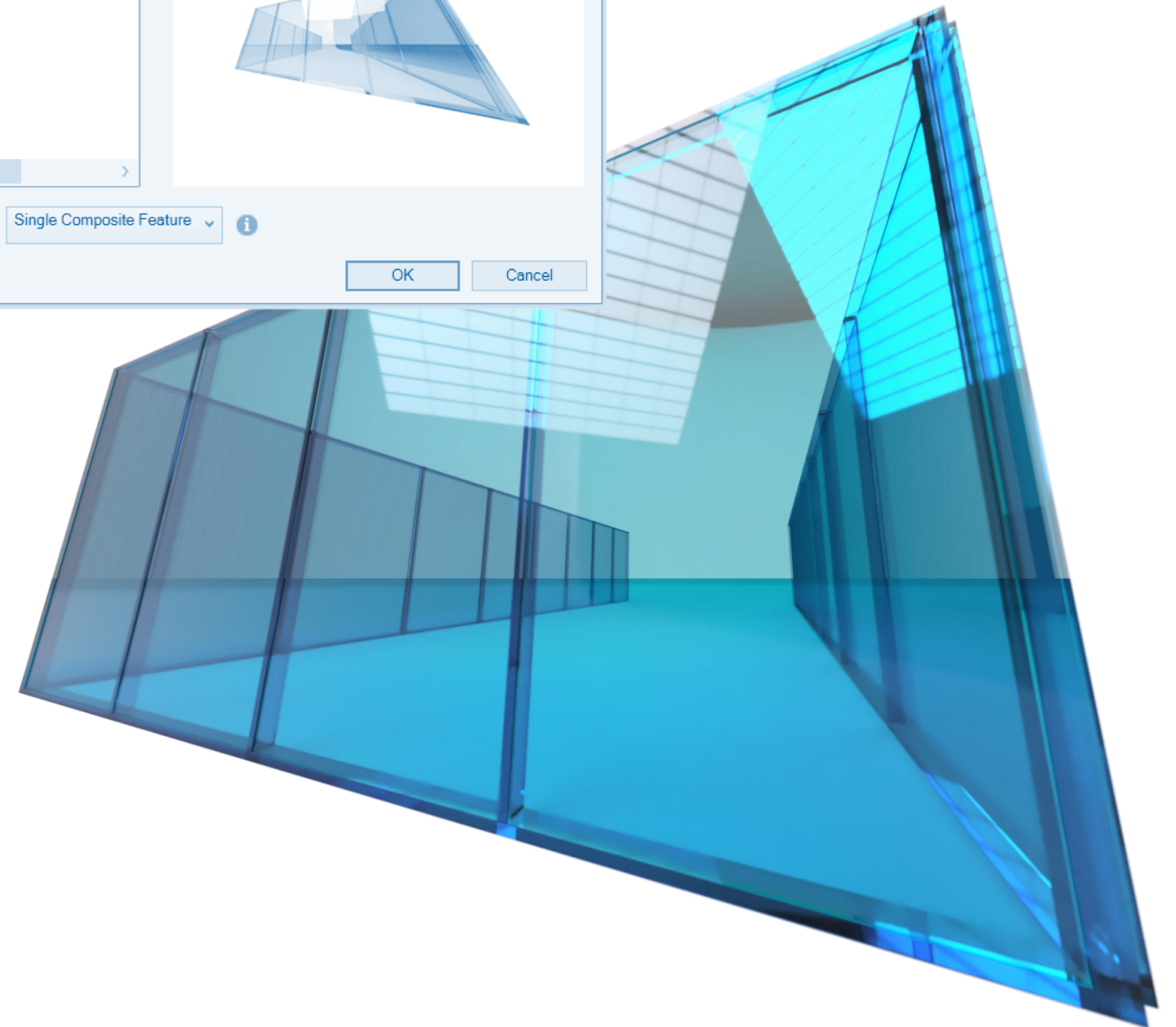
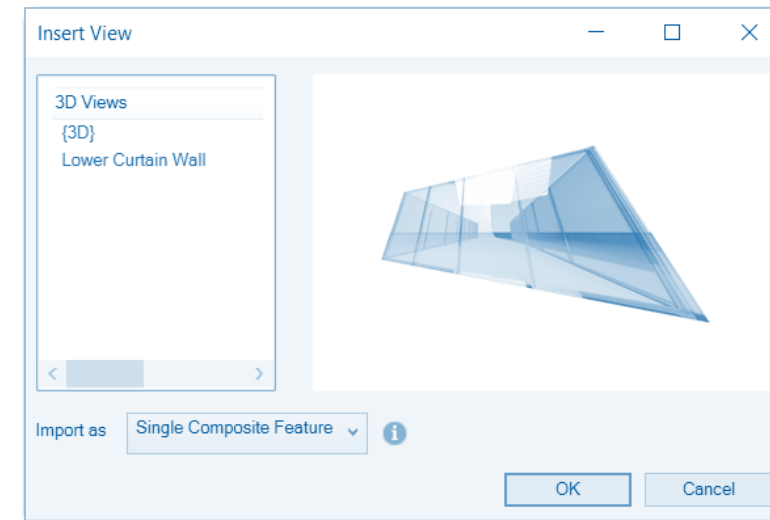


- Duplicate a 3D view and rename it
- Temporarily hide the elements you want to keep
- “Hide in view” everything else
- Reset temporarily hidden elements



# Bring into Inventor

- Open the .RVT in Inventor
- Select the 3D view you created
- Import either as multibody solid or composites
- Use Inventor modelling process to rebuild a technically accurate model
- Frame Generator and Sheet Metal





# BIM levels of detail

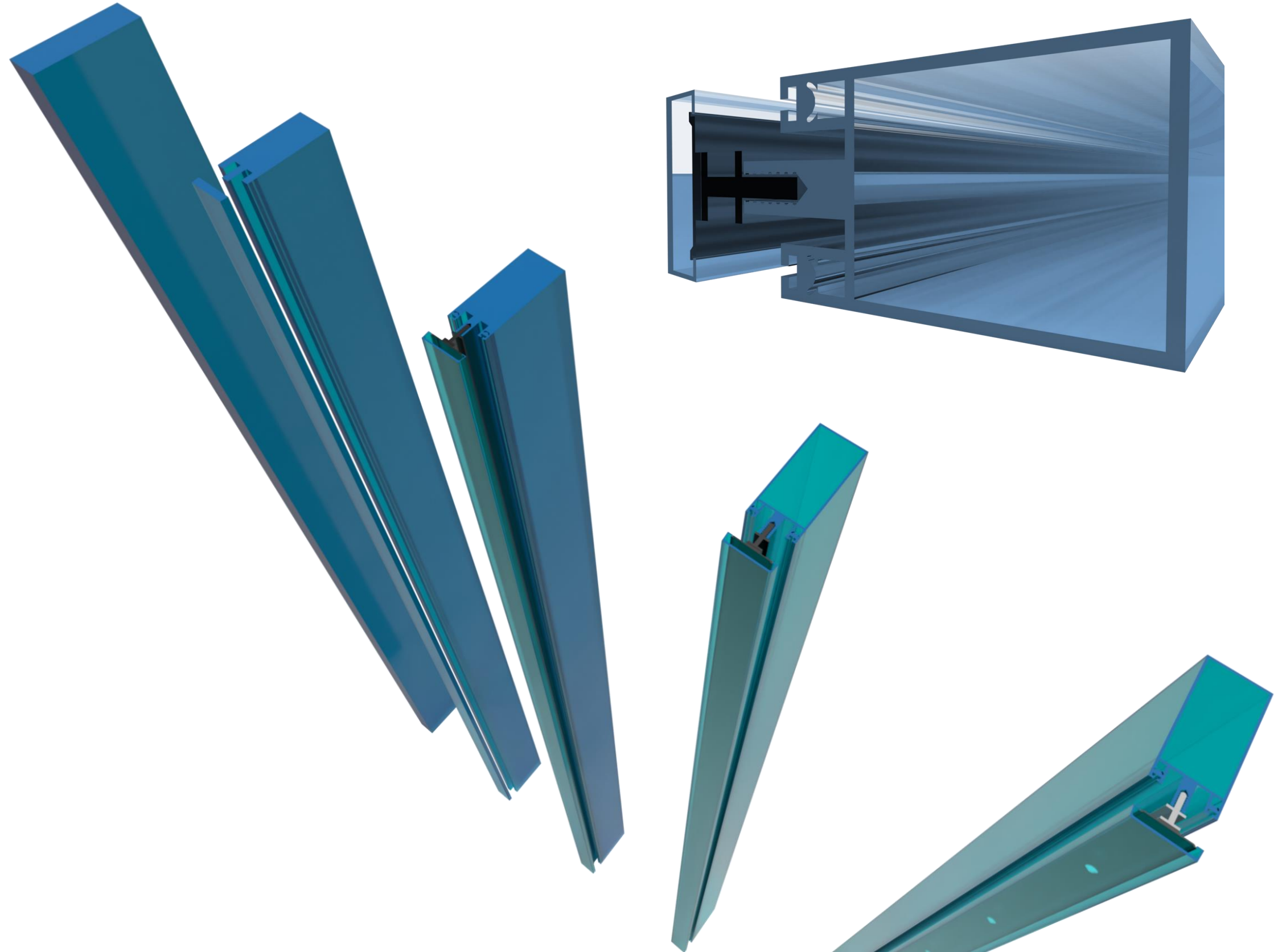
LOD 100

LOD 200

LOD 300

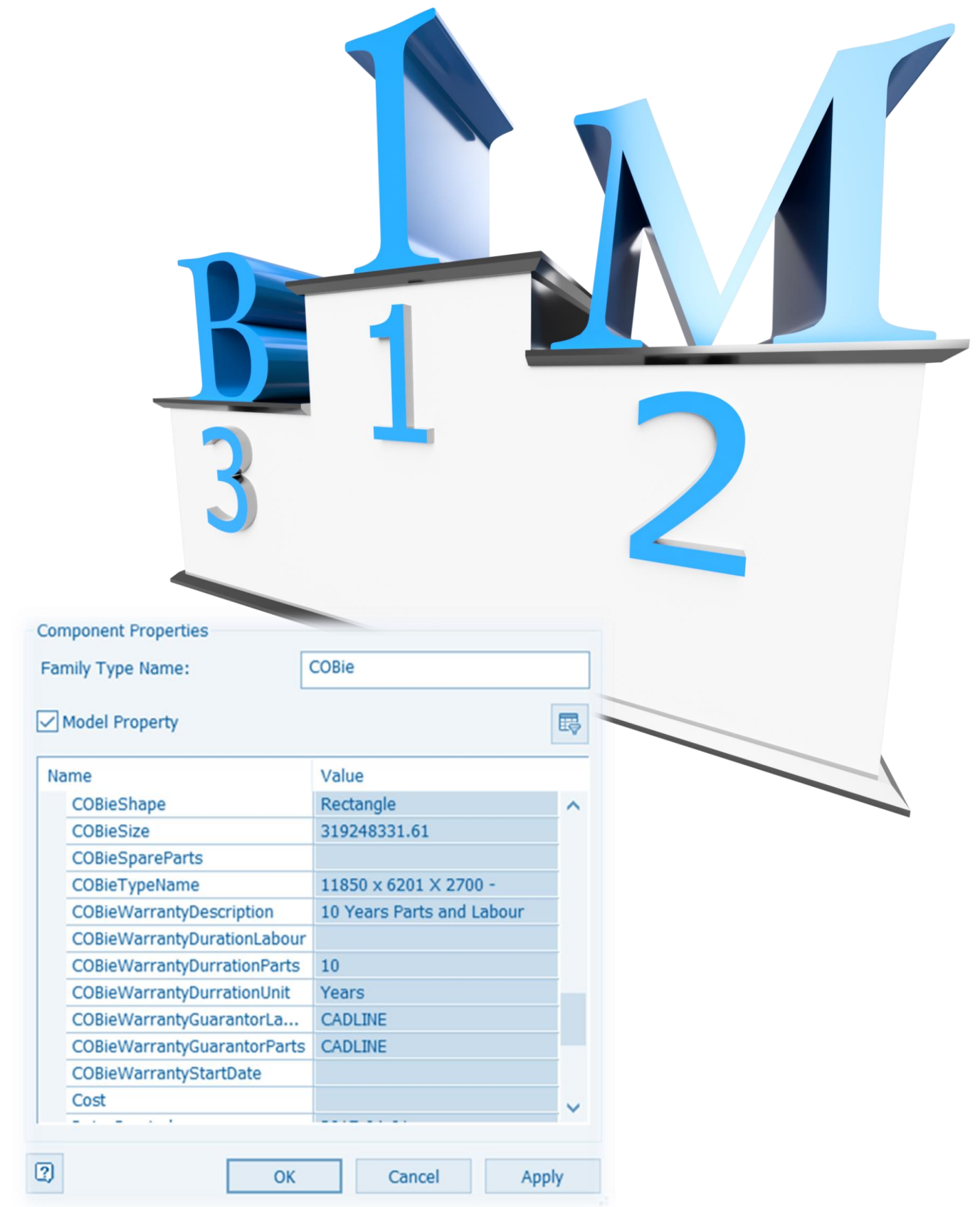
LOD 400

LOD 500



# The *i*important bit

- COBie parameters  
(Construction Operations Building Information Exchange)
- Uniclass Classification
- Metadata
- BIM Level 2 Compliancy





# Republishing the model

- What file type to choose?
- Cutting the building
- Emitting Light
- Other options available?
- Configurator 360

