



LIVE Design Ecosystem – Using Revit LIVE, Stingray and 3ds Max for Real-Time

Jean-Pierre van Gastel

Autodesk Media & Entertainment Specialist

Join the conversation [#AULondon](#)

Key learning objectives

- At the end of this lab you will be able to:
 - Utilize Revit LIVE in your own AEC environment
 - Open an Revit LIVE project in Stingray
 - Edit Stingray materials to get a better visual quality
 - Add Static and Animated objects to your project
 - Trigger Animations and events by using Level Flow

The background of the image is a complex, abstract wireframe mesh. The mesh is composed of numerous interconnected lines forming a series of irregular, organic shapes that resemble a network or a topographical map. The lines are thin and grey. A solid blue gradient bar, transitioning from a darker blue on the left to a lighter blue on the right, spans the bottom portion of the image. The text "Live Design" is written in a white, sans-serif font on the left side of this blue bar.

Live Design

A high-quality architectural rendering of a modern interior space, likely a bedroom or a combined living and sleeping area. The room features large floor-to-ceiling windows with dark wood frames, offering a view of a lush, wooded landscape with tall trees. The interior is furnished with a bed covered in a vibrant red duvet, a white headboard, and two bedside lamps. A small table with two chairs is visible near the windows. The ceiling is equipped with recessed lighting, and the walls are finished with a combination of wood paneling and a textured brick-like material. The overall atmosphere is warm and sophisticated.

LIVEDESIGN

A SOLUTION TO EXPLORE AND COMMUNICATE YOUR DESIGNS



3D Viz specialist

Produce high end images and videos using 3ds Max

 AUTODESK®
3DS MAX®

 AUTODESK®
REVIT®



AUTODESK®
STINGRAY

 AUTODESK®
REVIT®

 AUTODESK®
REVIT® LIVE



ARCHITECT

Experience design in an interactive or immersive space.



Today's Project



VILLAMARTINI

Today's Project

- **Villa Martini**

- Internal project made by Amer Yassine
- Autodesk LIVE Editor splash screen image
- Sample scene available for users (standard & optimized)
- Show the collaboration between LIVE and 3ds Max Interactive / Stingray

Autodesk Live Viewer Samples

If you're looking for Live presentation files, you've come to the right place. Download these freely available* samples to explore the power of Live interactive and VR experiences for yourself. It's a great way to get familiar with what you can create with Autodesk® Revit and Revit Live's cloud service.

Curious about how Autodesk® Live and Autodesk® Stingray can work together? Download the ROWS House "Enhanced in Stingray" project and see how animated assets and textures can make your designs come to life in even more vivid ways.

Is your viewer up to date?

It looks like you may have a previous version of the Live viewer. Update your app now for the best possible experience.

DOWNLOAD LATEST APP >

Download sample presentations



Basic Sample Project 133MB

DOWNLOAD



Medical Center 99.4MB

DOWNLOAD



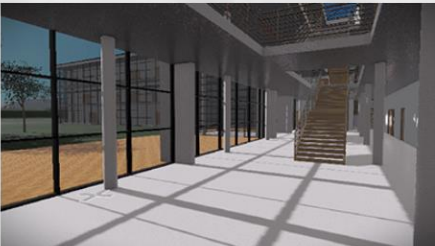
Villa Martini Enhanced in Stingray 182MB

DOWNLOAD



Villa Martini 90MB

DOWNLOAD



Advanced Sample Project 144MB

DOWNLOAD



ROWS House 149MB

DOWNLOAD

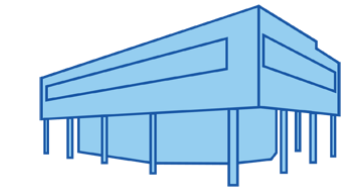
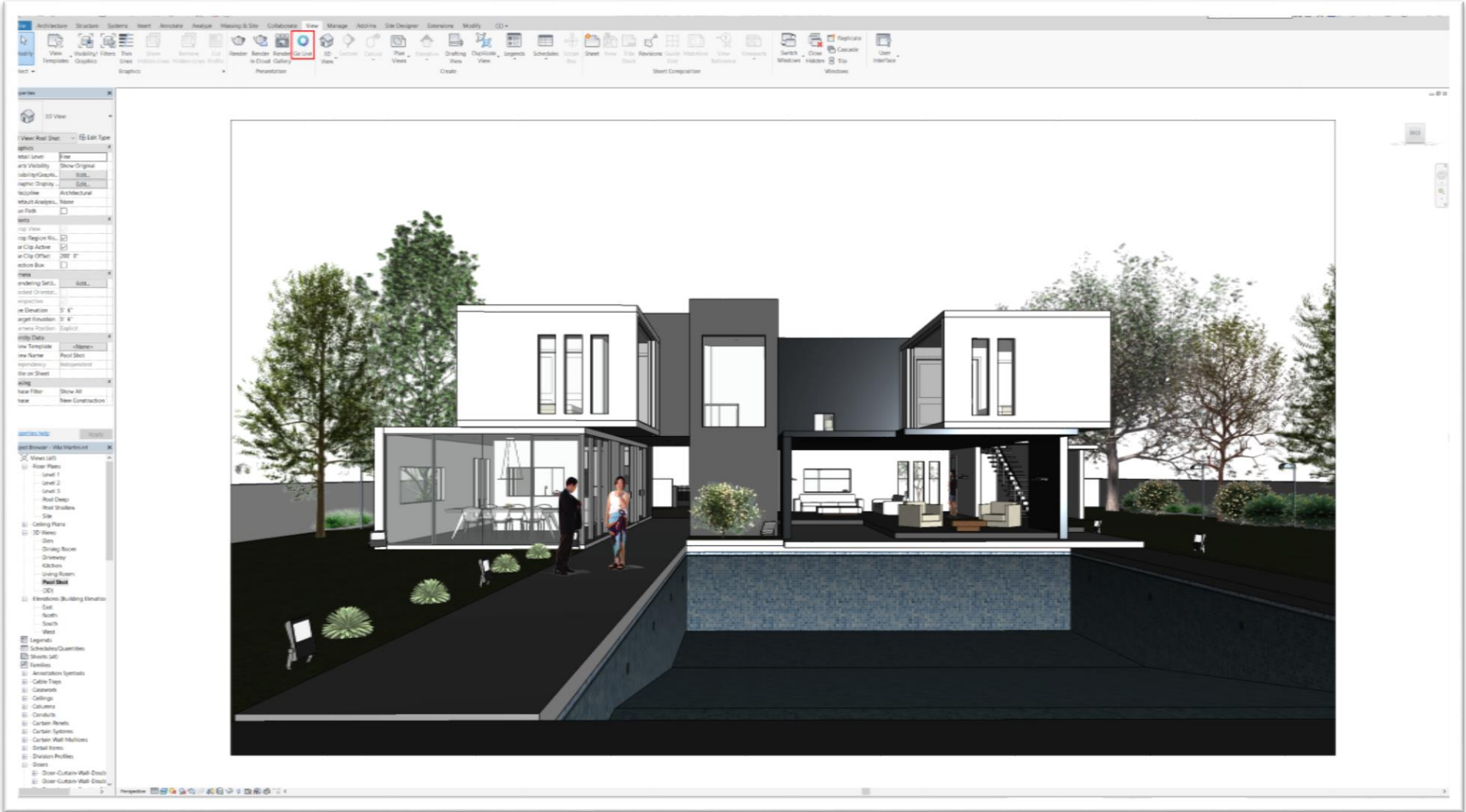
*Sample content is distributed under the [Creative Commons Attribution 4.0 International license](#).



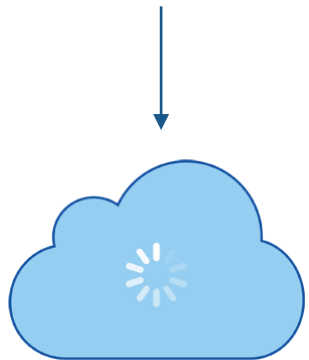
The background of the slide is a complex, abstract wireframe mesh. The mesh is composed of numerous interconnected lines forming a series of organic, flowing shapes that resemble a stylized, interconnected network or a series of overlapping, curved planes. The lines are thin and grey, set against a white background. A solid blue horizontal bar spans the bottom third of the image, providing a contrasting background for the white text.

Go Live from Revit(LT)

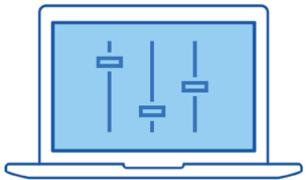
Revit LIVE Workflow



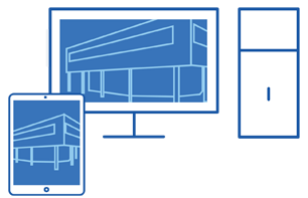
Design
Start with Revit or Revit LT



Transform
Upload your BIM model to the cloud in a single click



Customize
Download and personalize your interactive visualization



Present
Show off your design, or let clients explore it on their own

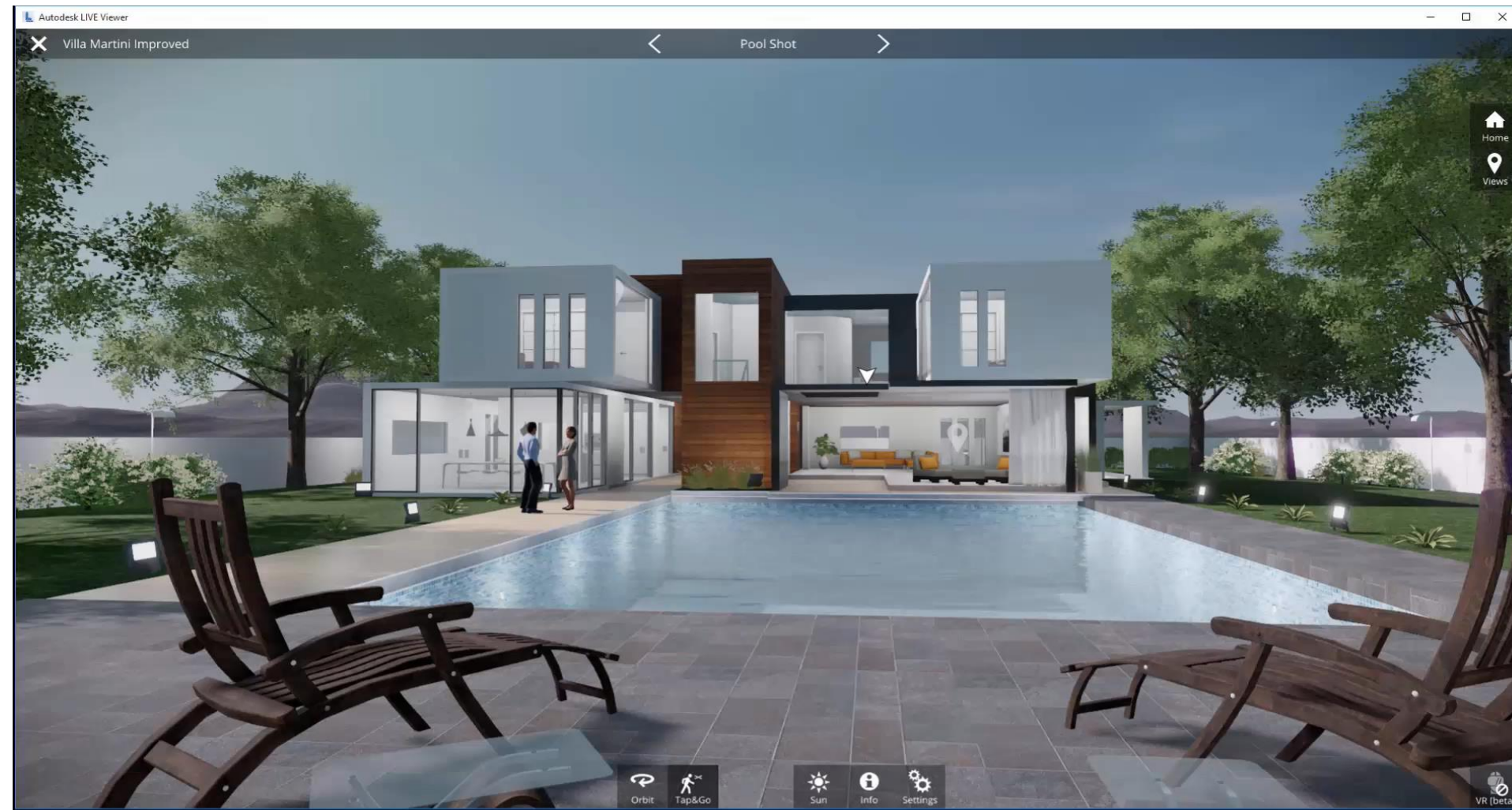


The background features a complex, organic wireframe mesh pattern in a light gray color, set against a white background. A solid blue horizontal bar spans the bottom portion of the image. The text 'LIVE Editor' is written in white, sans-serif font on the left side of this blue bar.

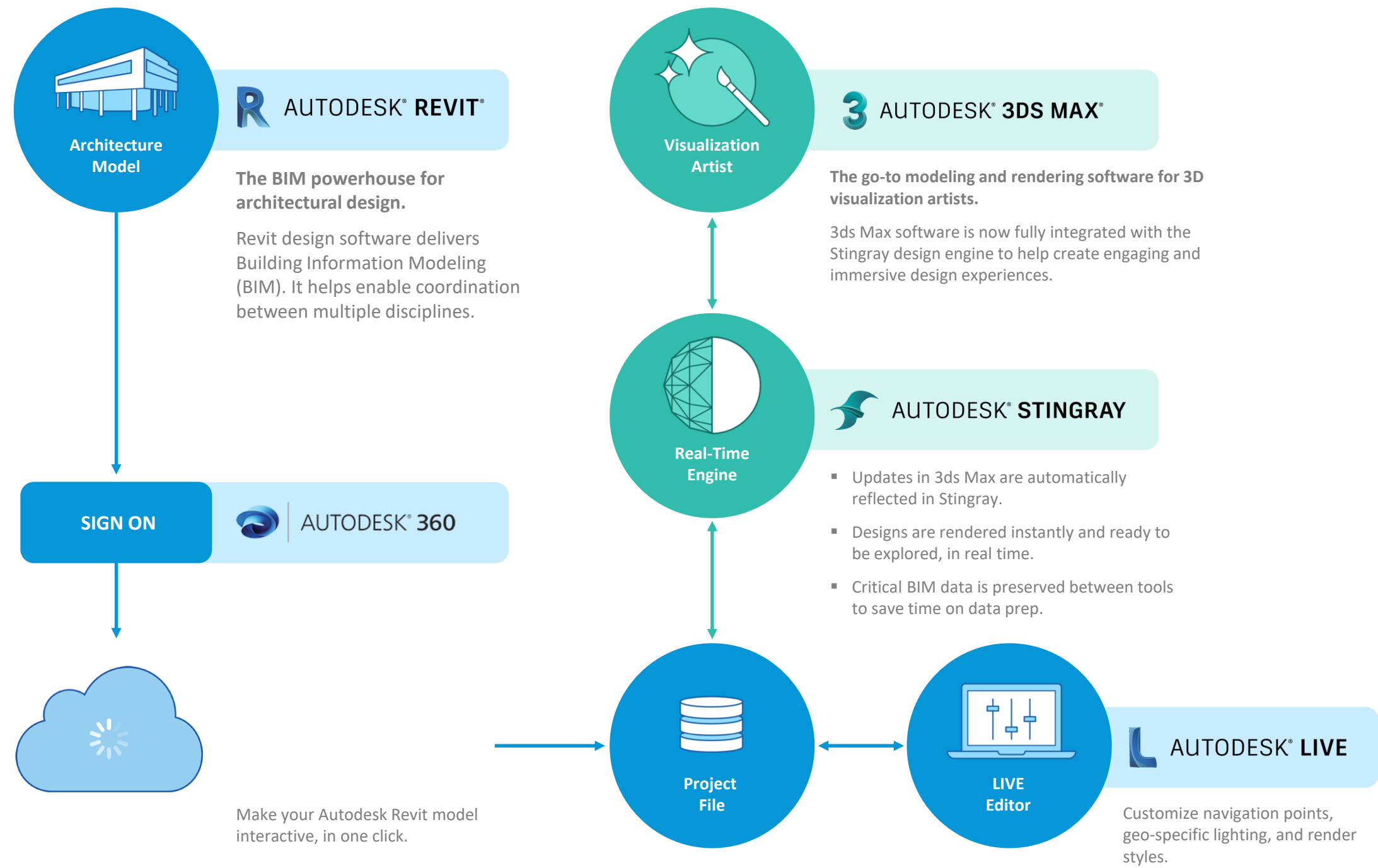
LIVE Editor



LIVE Editor: VR



Revit LIVE Workflow

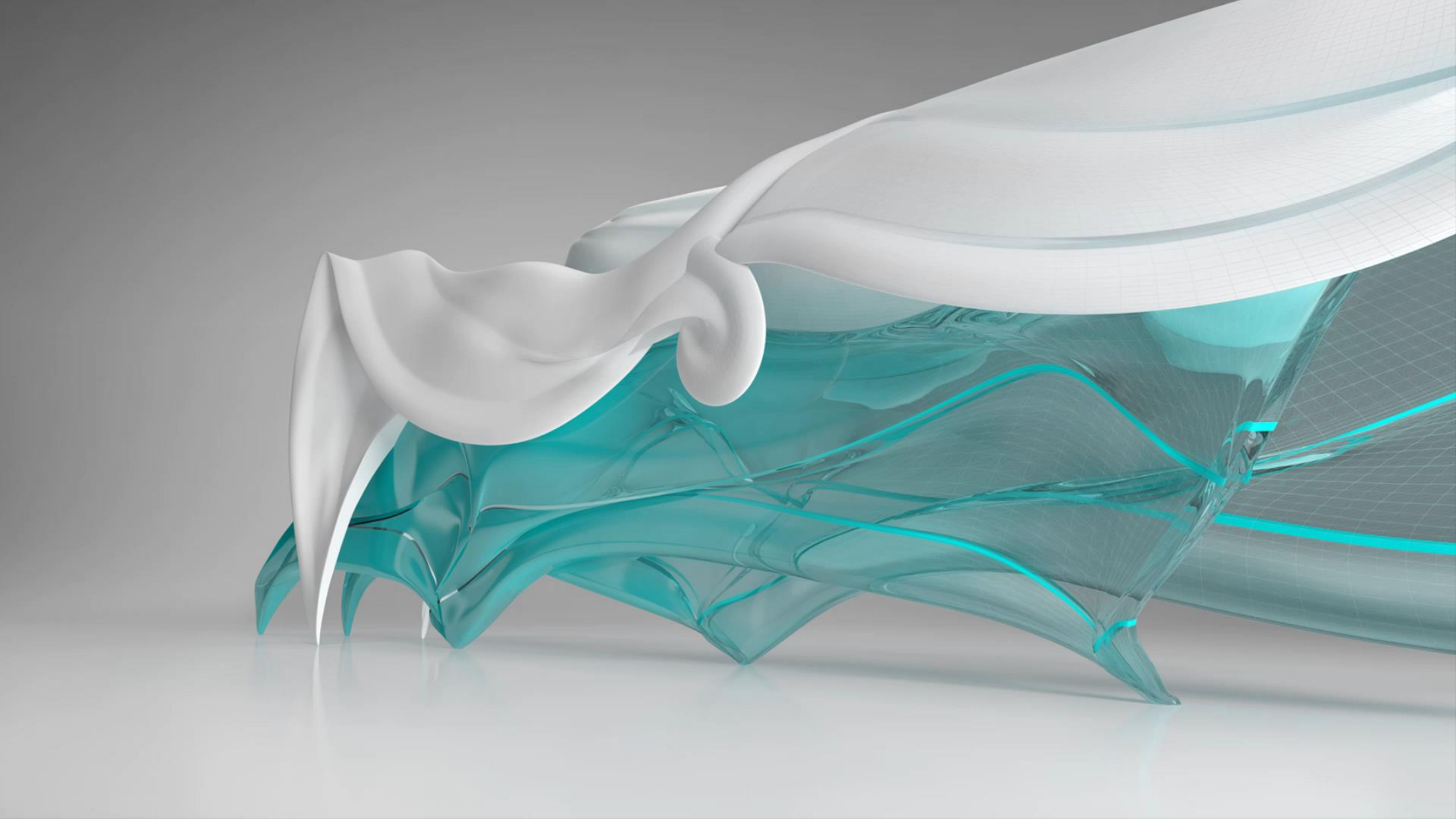


3ds Max Interactive



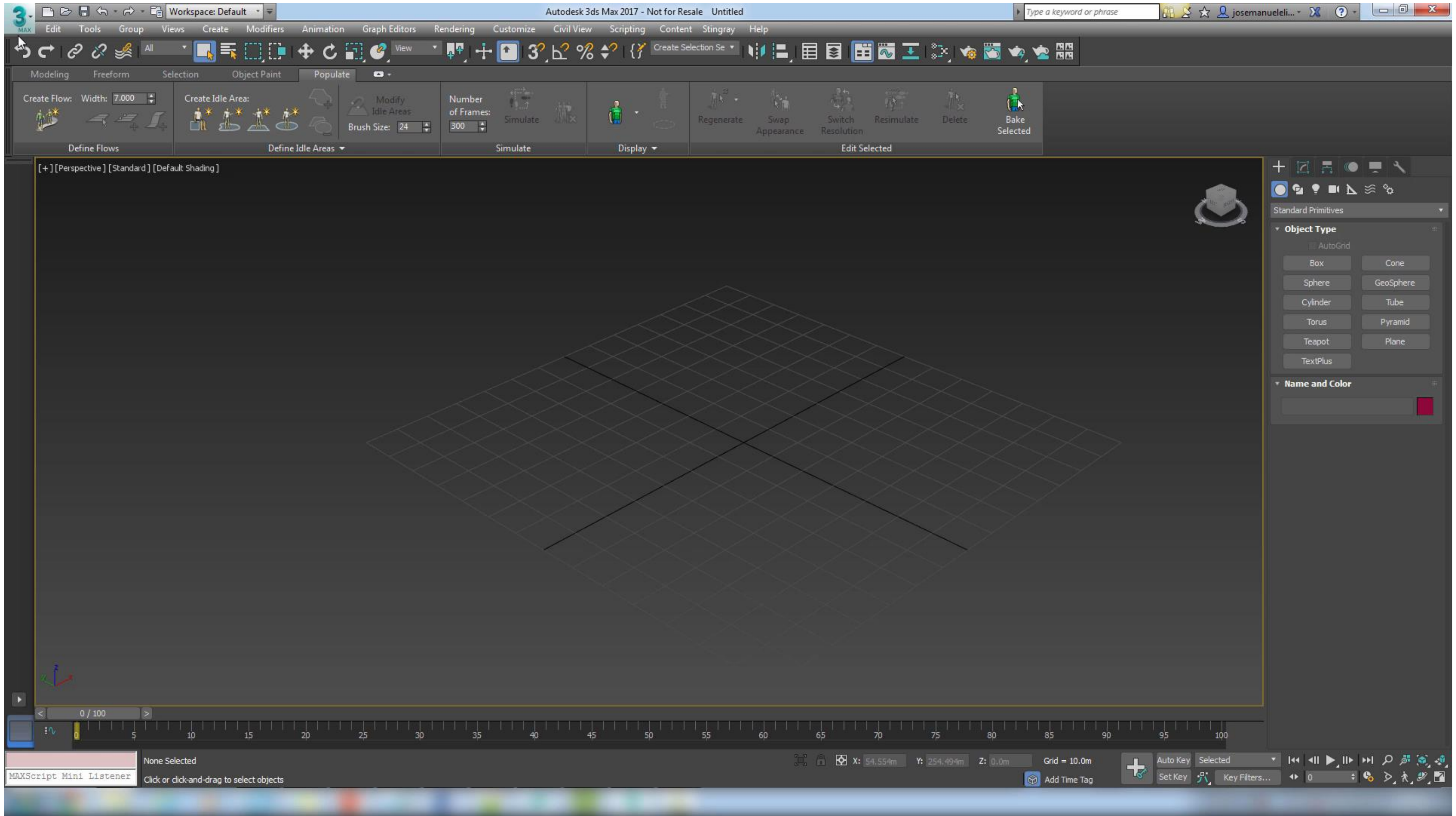
Leveraging the LIVE Design Ecosystem

- Open LVMD in 3ds Max Interactive / Stingray
- Adjust materials
- Light Baking
- Post Screen Effects
- Managing Performance

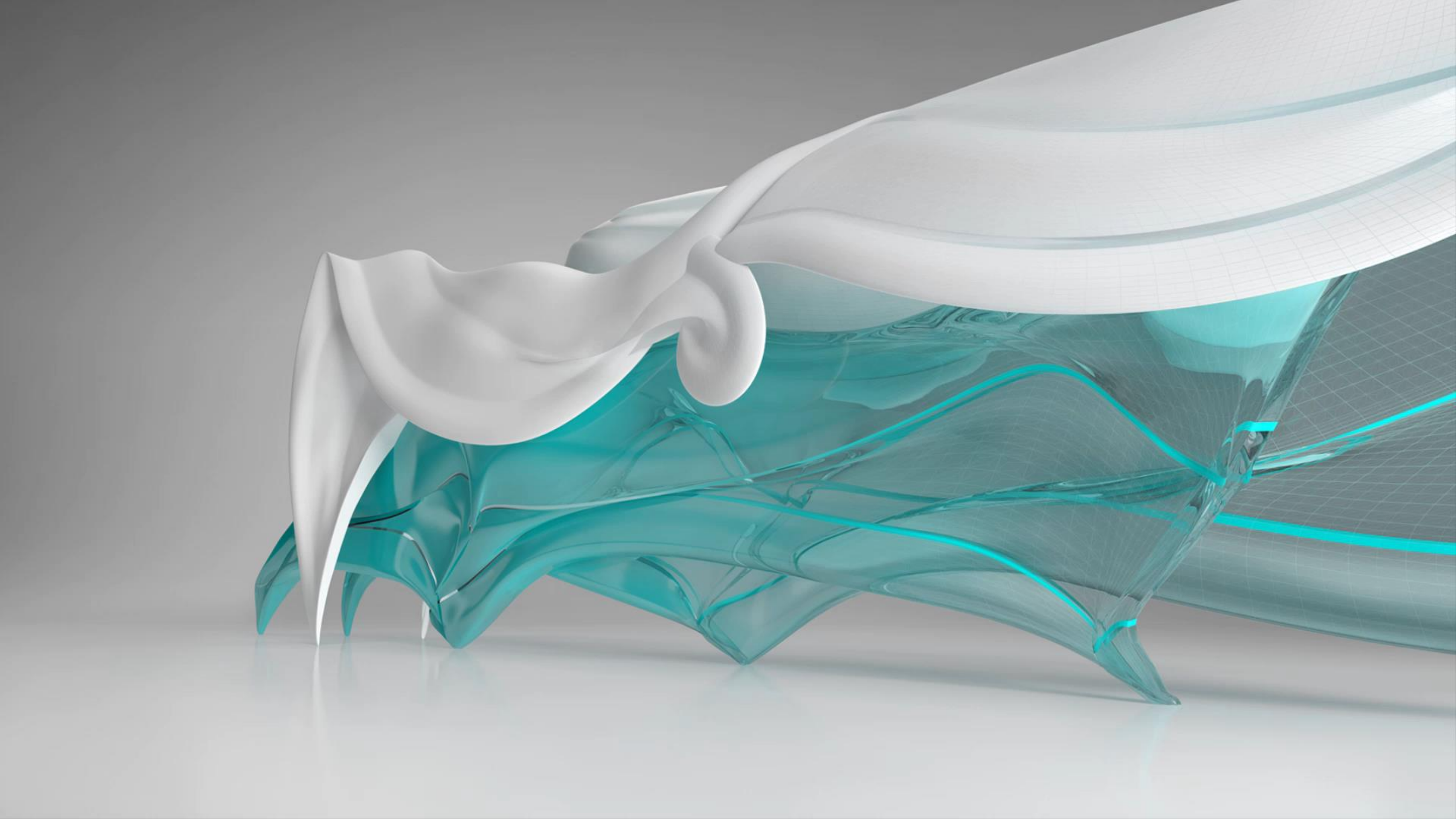


Leveraging the LIVE Design Ecosystem

- Importing Static Assets from 3ds Max
- Downloading Online Assets
- Importing & Setting up Animations
- Setting Up events with Flow
- Publishing Stingray Project to LIVE



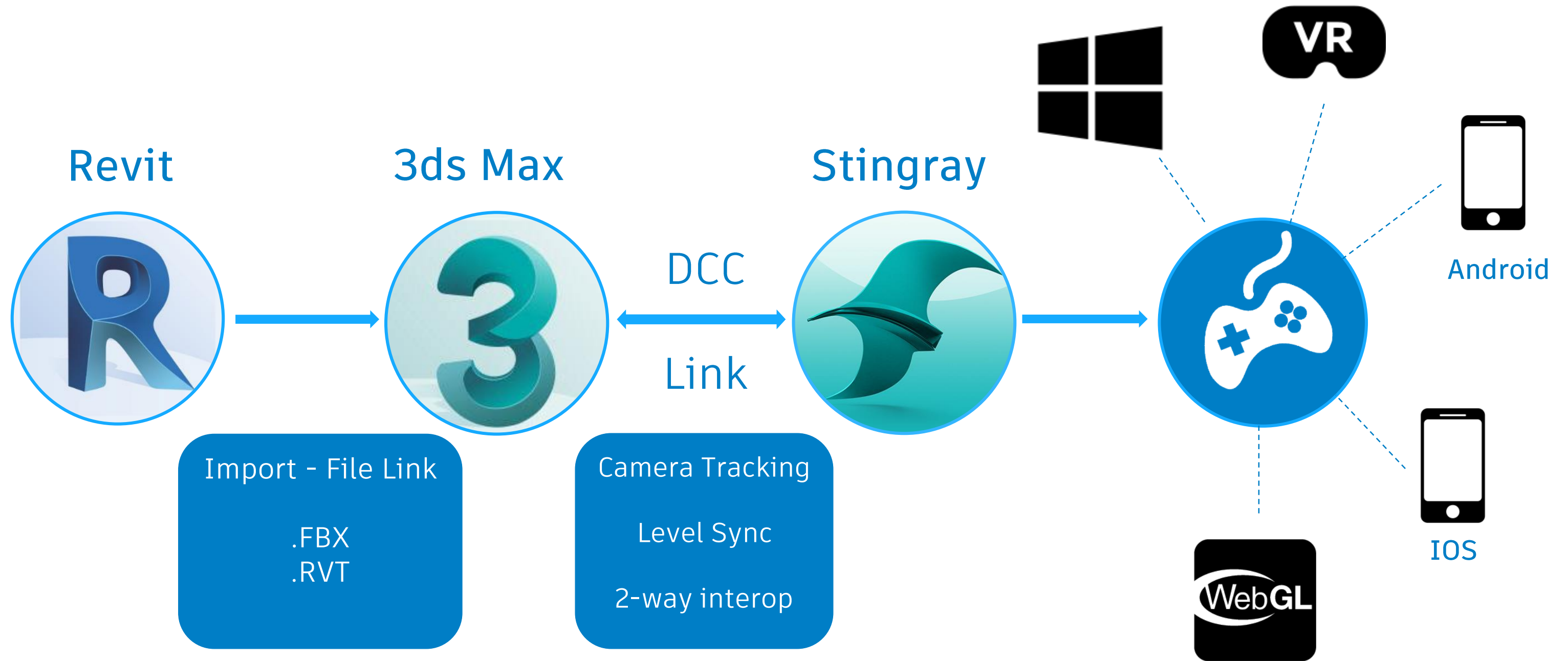


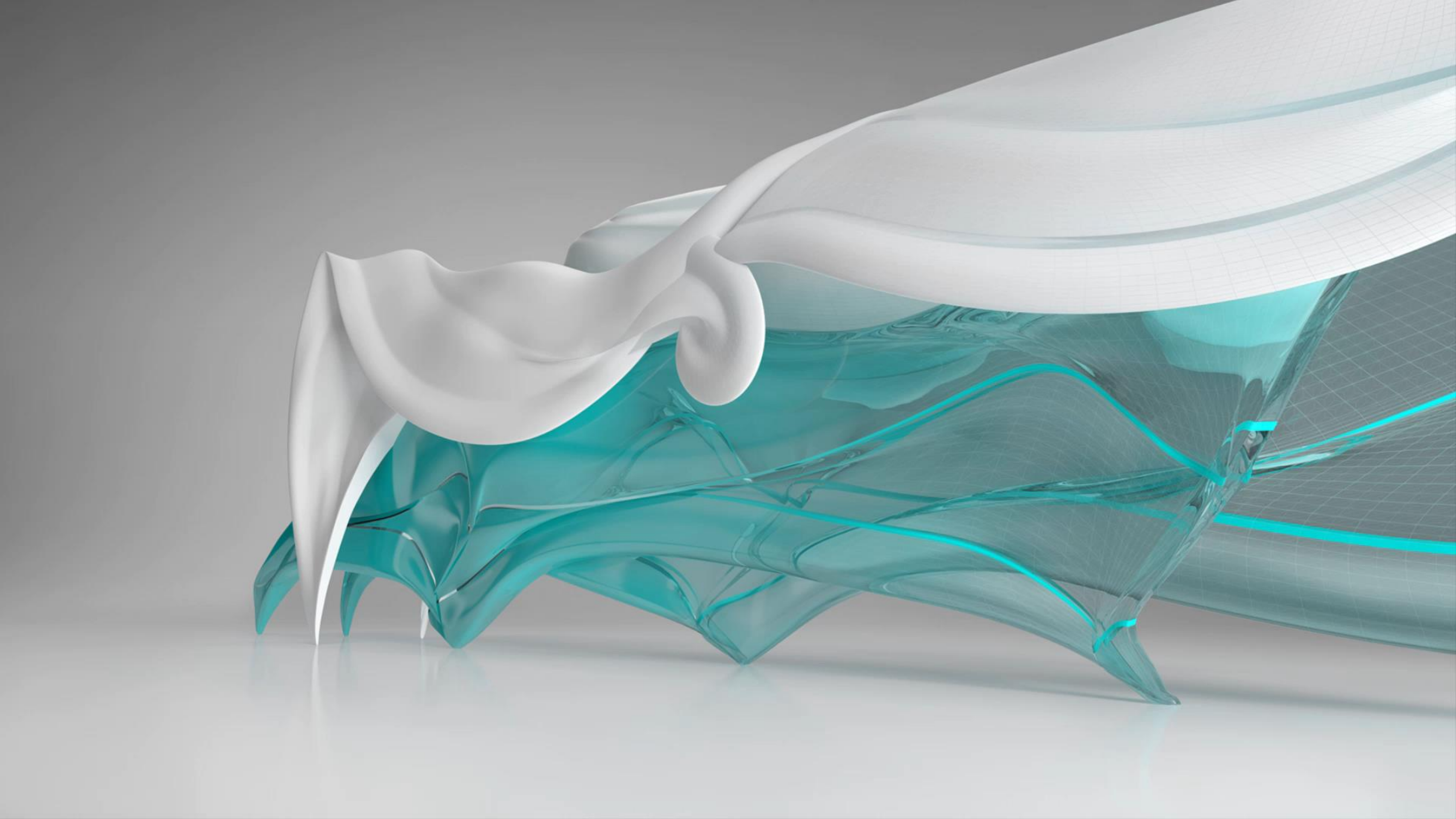


The background features a complex, organic wireframe mesh in a light gray color, resembling a stylized, interconnected network or a series of flowing, tubular structures. This mesh is set against a plain white background. A solid blue horizontal bar spans the bottom portion of the image, providing a contrasting base for the white text.

3ds Max & 3ds Max Interactive / Stingray
Connectivity

3ds Max & Stingray Connectivity





Questions?

Thank You!!

