

Step Out of the Past and Into the Future with Sheet Set Manager

Adam Dirig

President & CEO Dirig Design, Inc.

@DirigDesign



Adam Dirig

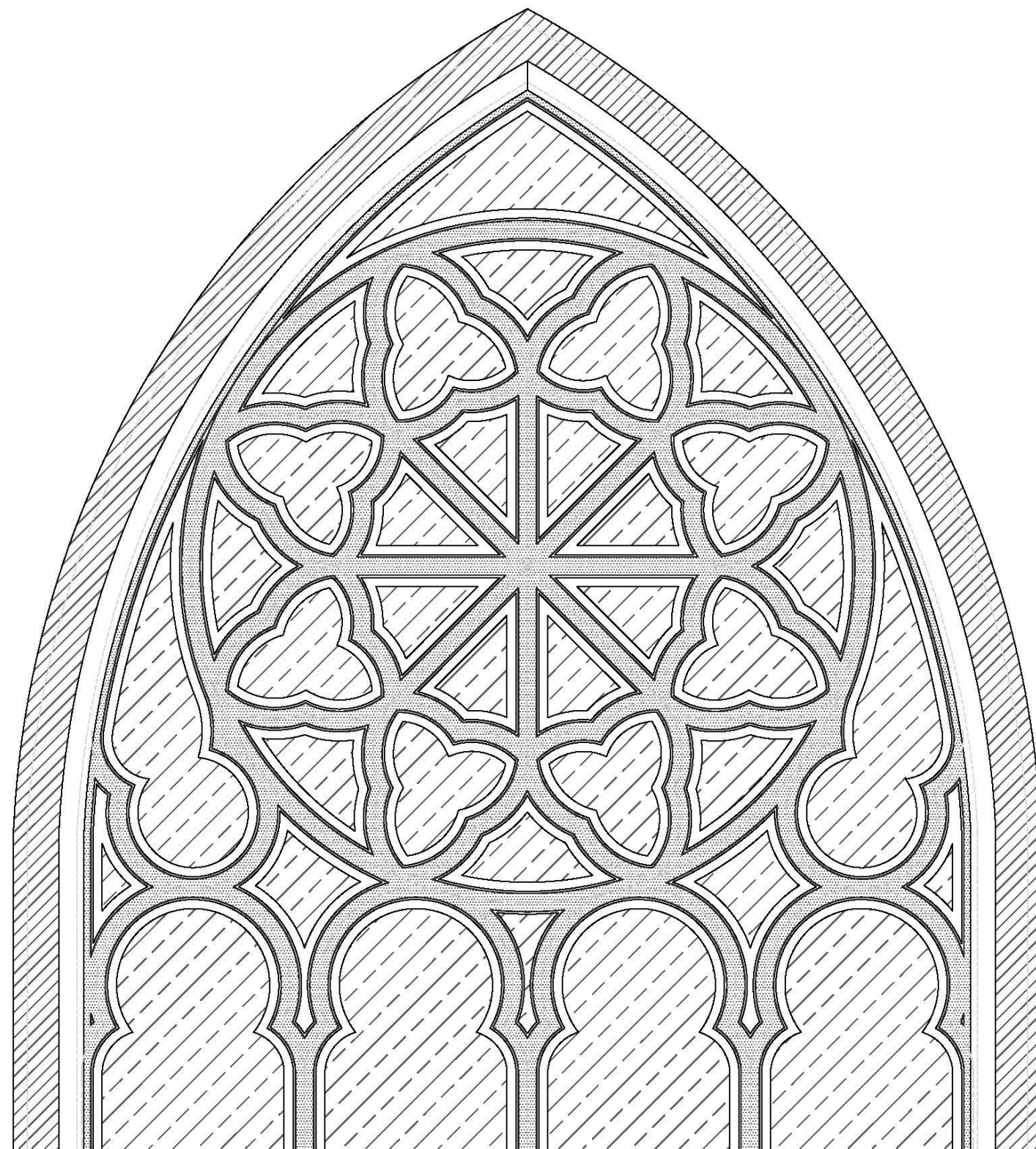
About the Speaker

Adam is the owner and CAD manager of Dirig Design, Inc., which provides technical drawings for architectural millwork shops across the United States. Adam an AutoCAD Certified Professional, has been using AutoCAD software since 2003. He holds a degree in woodworking and cabinetry. His career began as a cabinetmaker and he later transitioned to CAD designer and computer numerical control (CNC) programmer/operator before starting Dirig Design in 2009. He enjoys learning new technologies and strongly believes that using the most up-to-date software to its greatest potential can lead to an increasingly streamlined workflow as well as growth for his business and the businesses of those he serves. Additionally, as a subcontractor for multiple customers, he has seen a wide variety of drawing methods and has gleaned from their successes or failures in order to improve his own techniques. He enjoys teaching and will provide clear, practical knowledge of AutoCAD software's lesser-known features that can greatly benefit the everyday user.





Dirig Design, Inc. is a drafting company that specializes in architectural millwork shop drawings and rendering services for the millwork industry. We service fifty to sixty architectural millwork shops from all across the United States. We work with the latest software and tools to ensure the best possible final product. Dirig Design, Inc. also has a laser sales division www.advanceddimensions.com that sells laser measurement and 3D templating tools to people all across the US.



Class summary

- Learn how to use AutoCAD software Sheet Set Manager to manage and automate your page layouts and callouts. There is no longer any need to manually control border information, page numbers, section/detail callouts, or other repetitive information. This class will explain Sheet Set Manager from setup to implementation-knowledge that will greatly increase your project efficiency and accuracy.

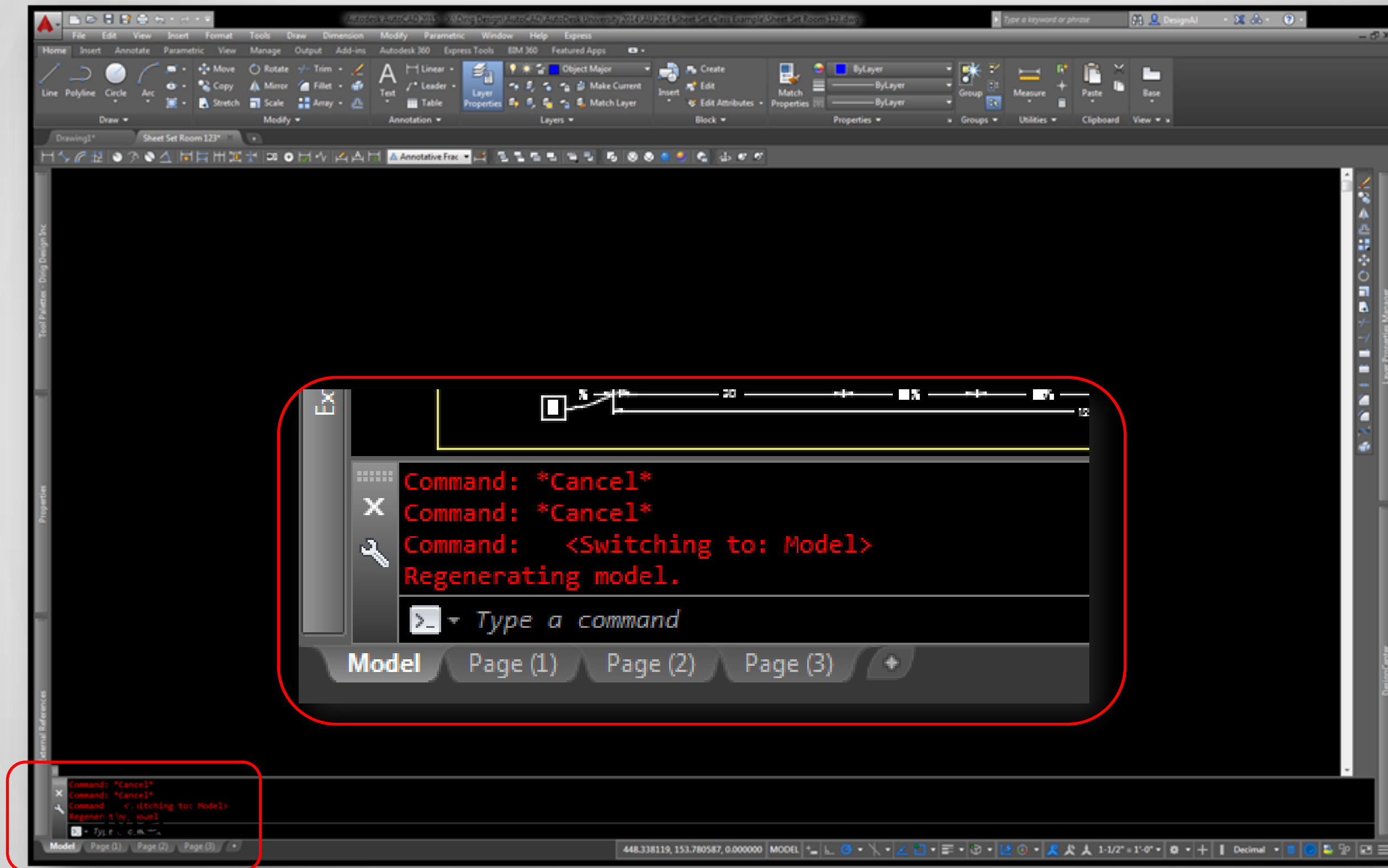
Key learning objectives

At the end of this class, you will be able to:

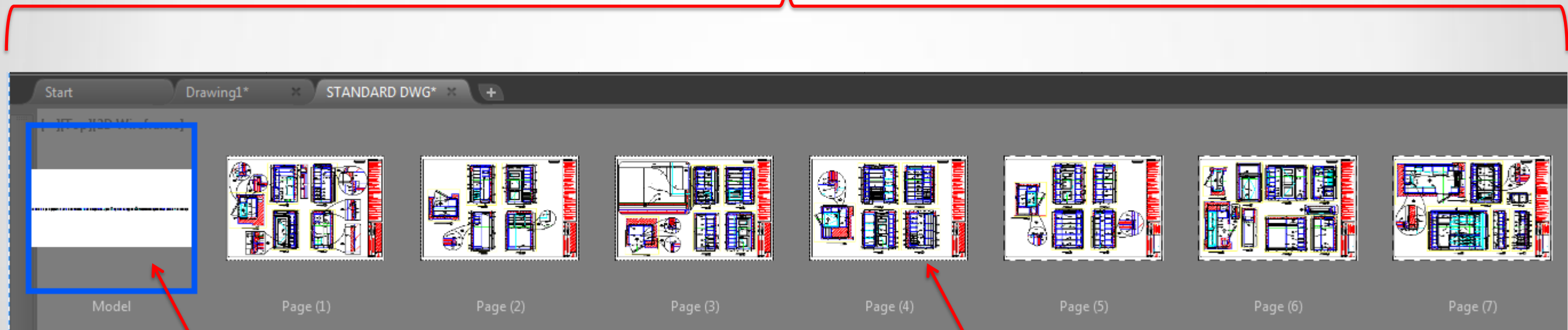
- Learn to differentiate between the standard DWG method and the Sheet Set Manager DWG method
- Learn how to convert current borders, callouts, and page layouts for use with Sheet Set Manager
- Learn how to set up and use AutoCAD software's Sheet Set Manager
- Learn how to save hours of time by letting AutoCAD software automate the page layout process
- Learn how to decrease overall drawing-file size through the use of Sheet Set Manager

Differentiate between the standard DWG method and the Sheet Set Manager DWG method.

STANDARD DWG METHOD



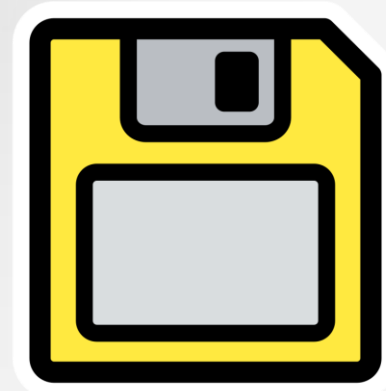
STANDARD DWG METHOD



MODEL SPACE

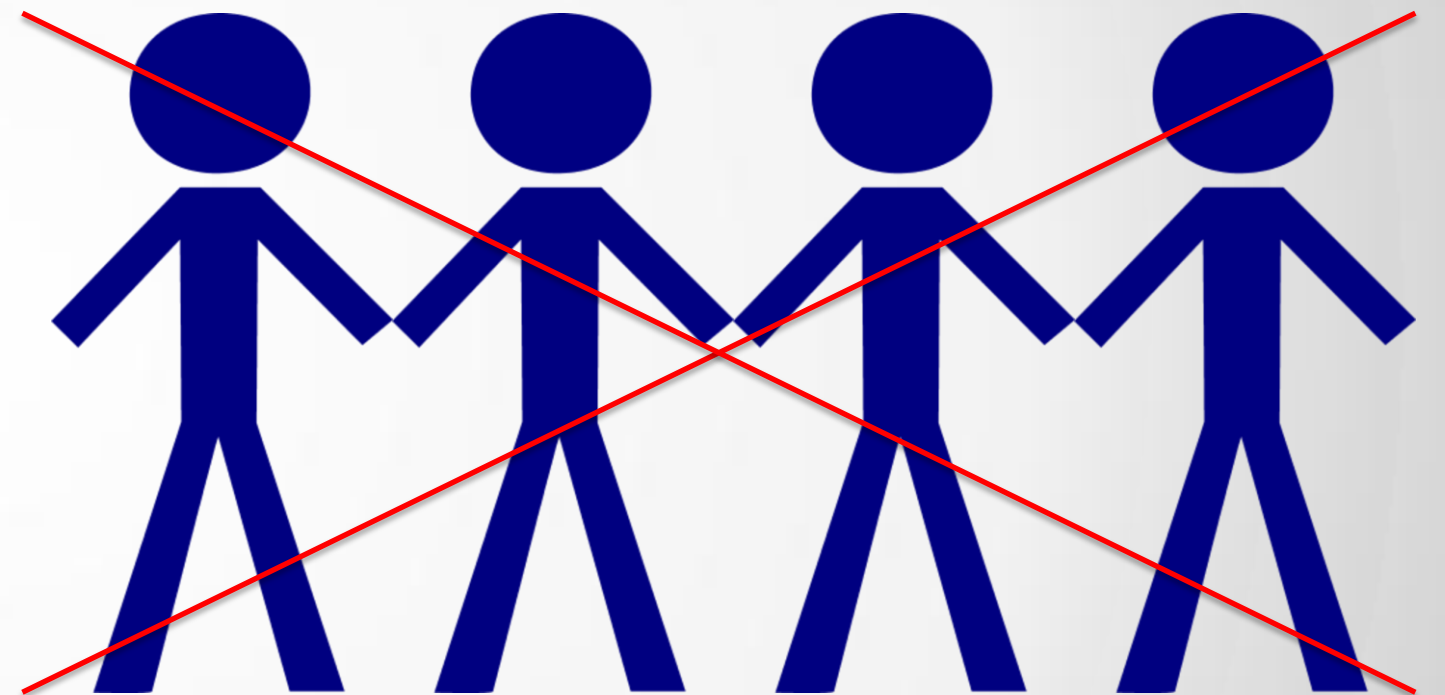
PAPER SPACE

STANDARD DWG METHOD (ISSUES)



FILE SIZE

REVISION TIME

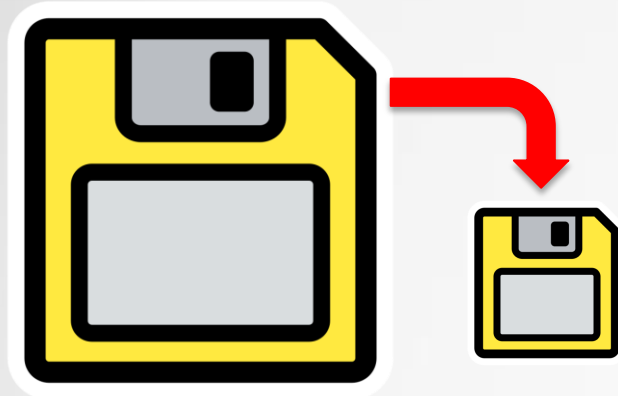


MULTIPLE DRAFTERS

SHEET SET MANAGER DWG METHOD

Using SSM the first part of the DWG setup remains much the same. All the geometry is created and dimensioned within model space; however, paper space, view labels, section symbols, pages information, project information, view placement, and view scaling is all handled by the SSM features and database. SSM uses **Fields**, **Views**, and **X-references** to accomplish this and allows for multiple people to access and edit the same project while maintaining small and easy to navigate DWG files.

SHEET SET MANAGER DWG METHOD (BENIFITS)



SMALLER FILE SIZE

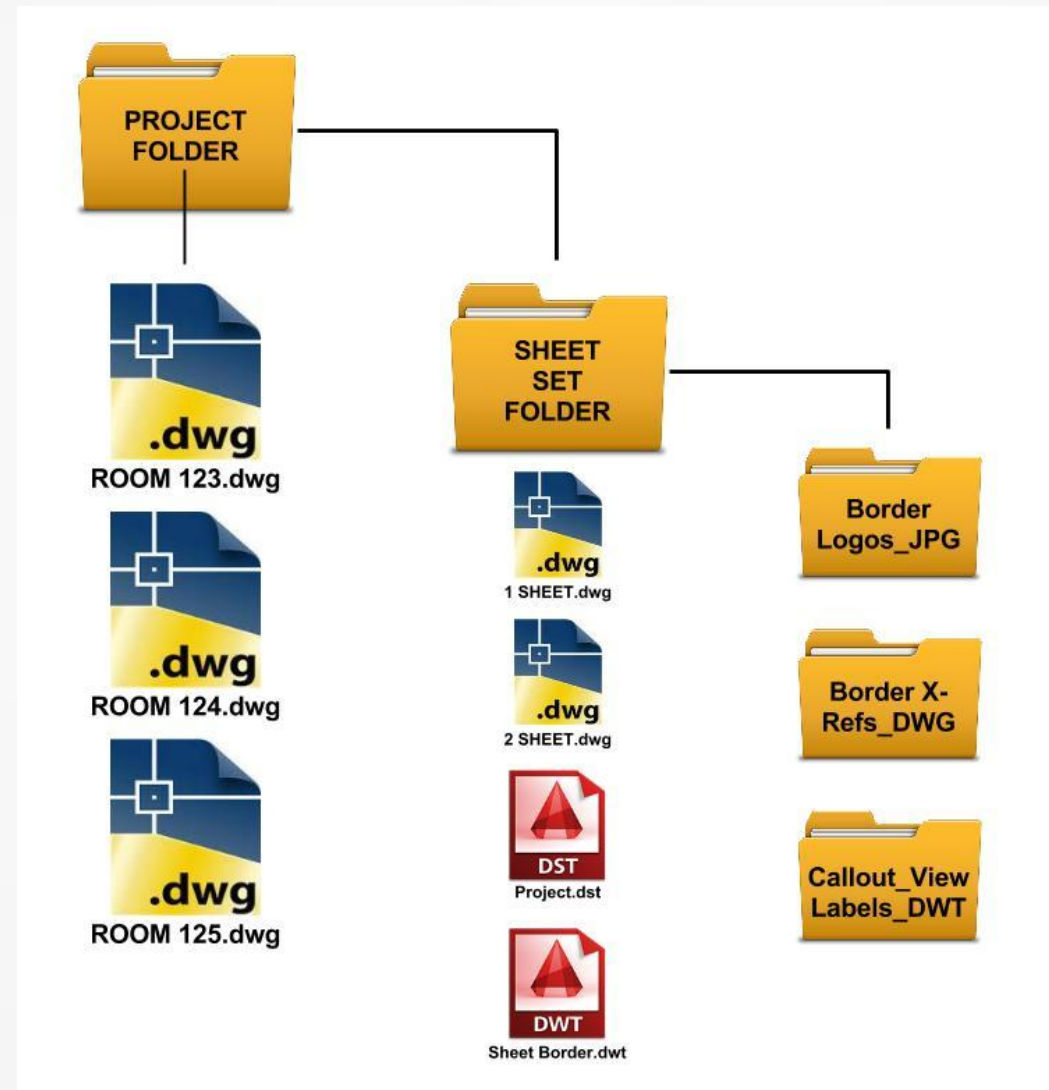
REVISION TIME



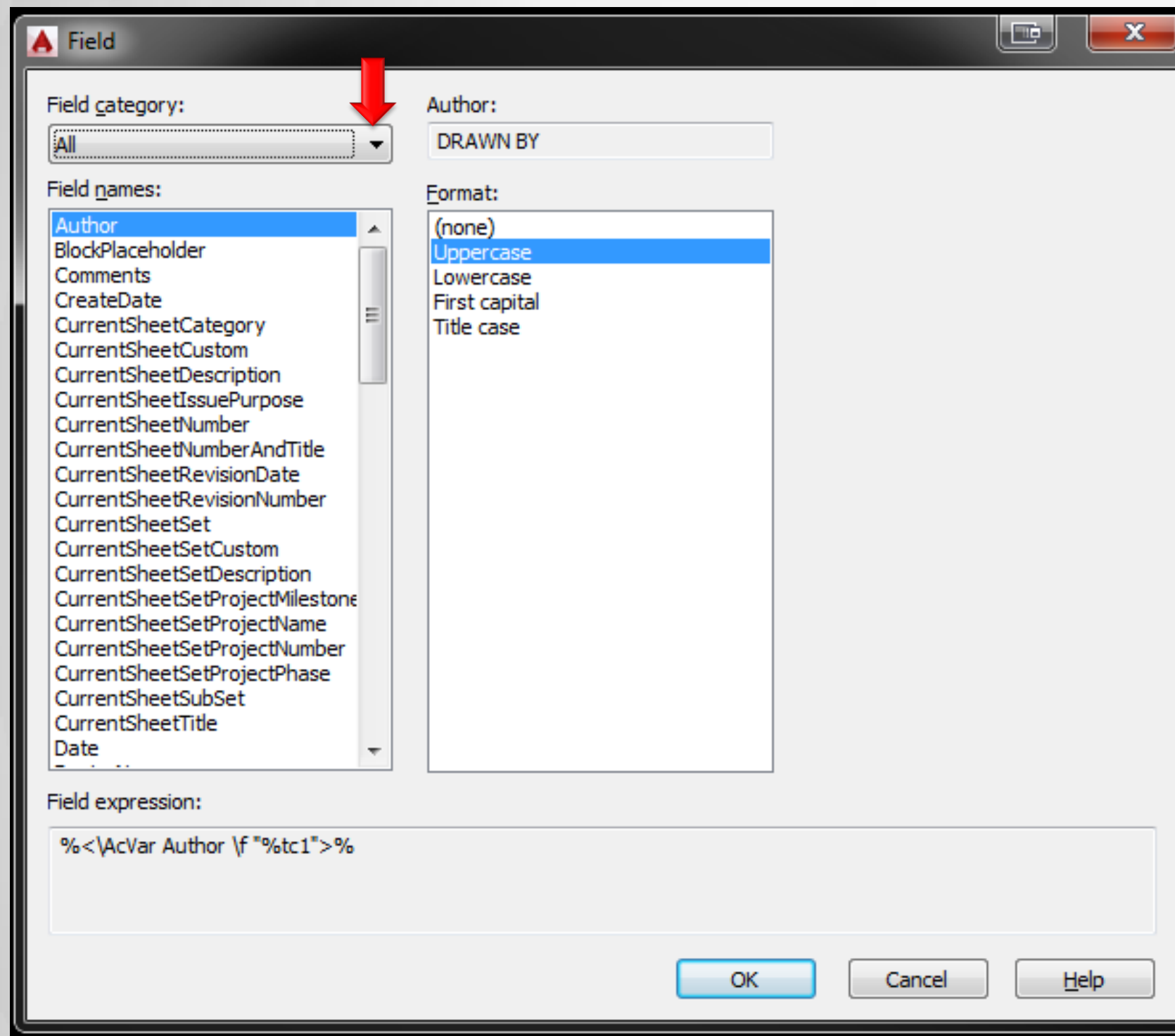
MULTIPLE DRAFTERS

SHEET SET MANAGER DWG METHOD

SSM FILE STRUCTURE EXAMPLE:

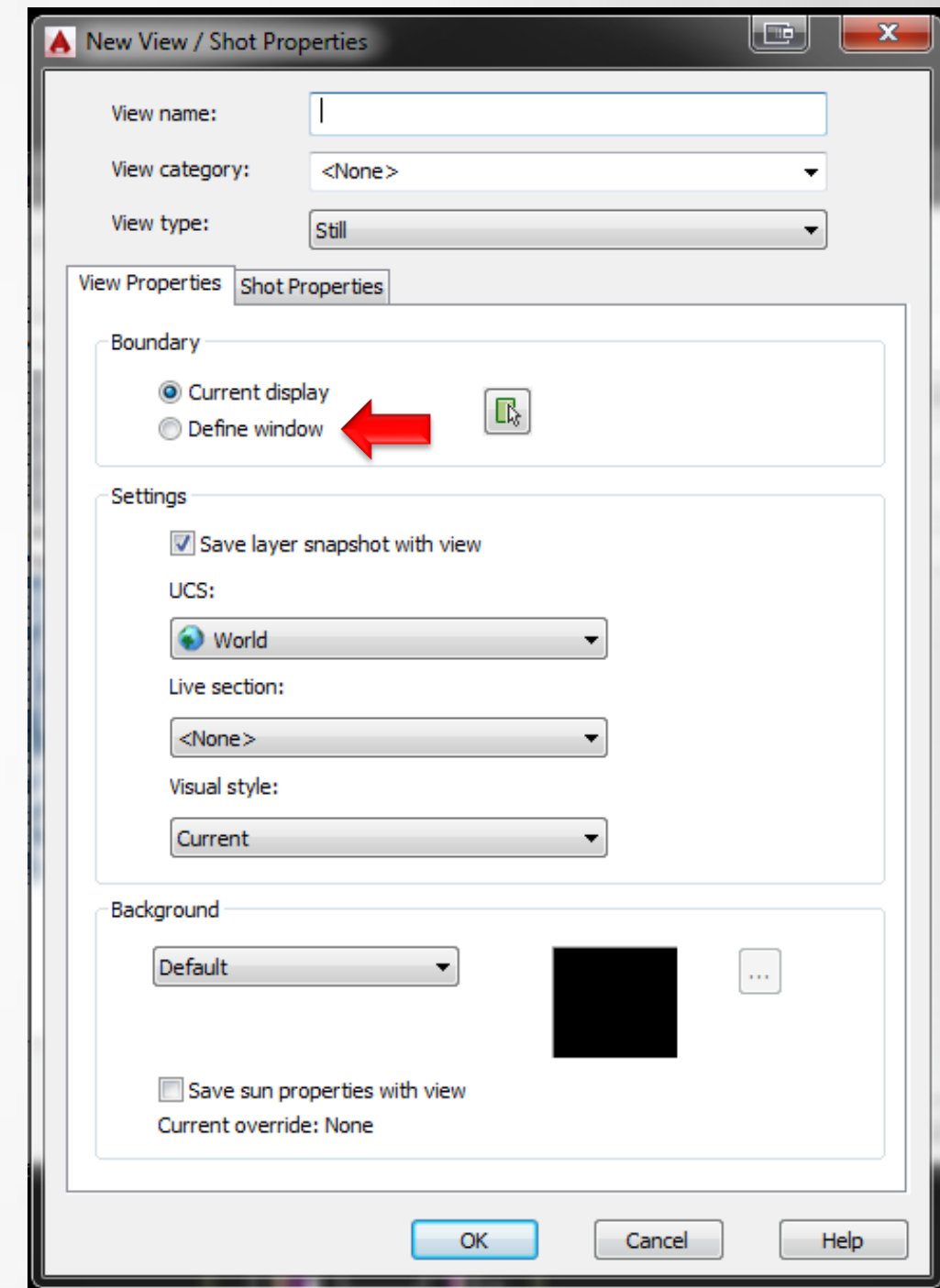
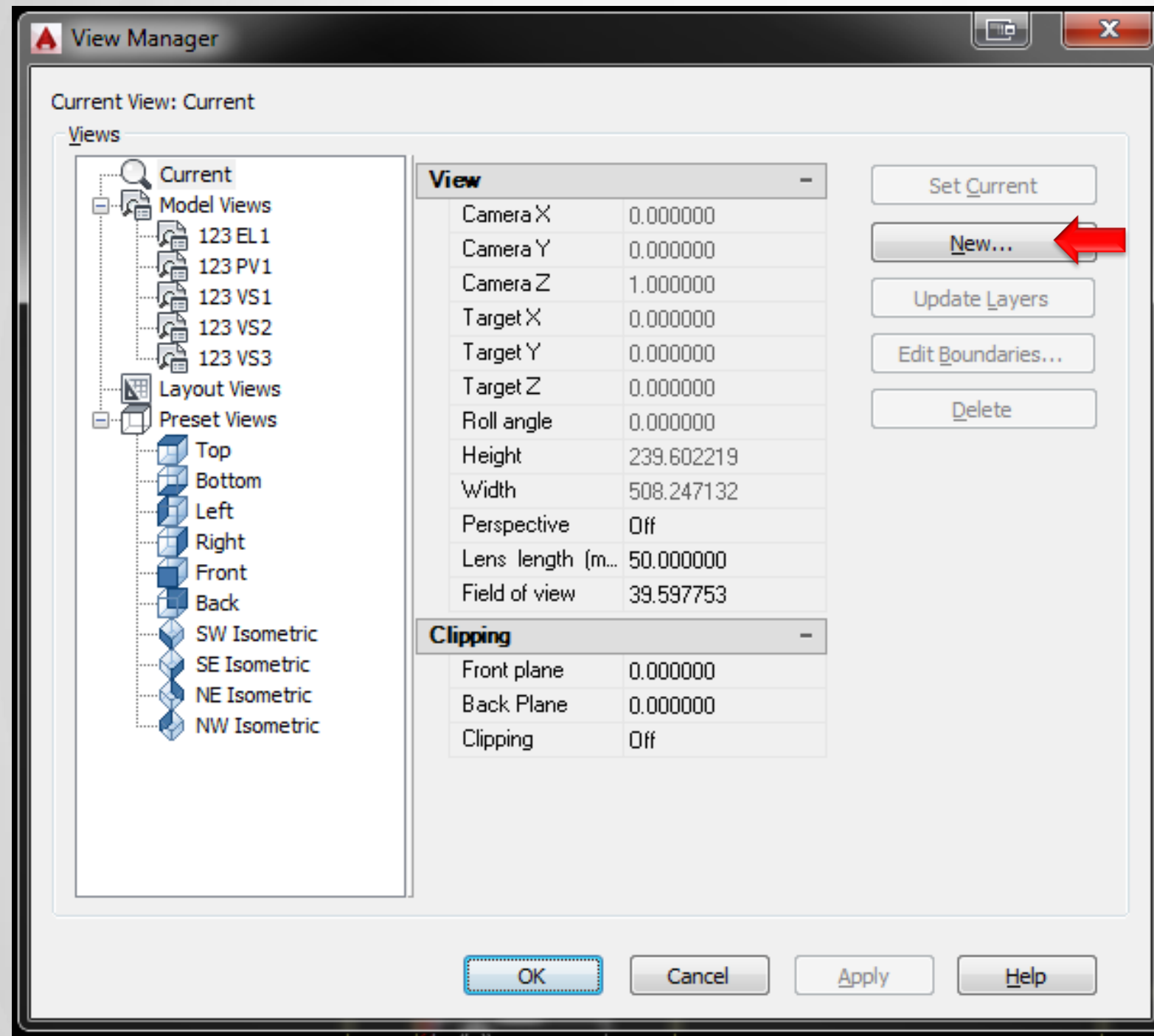


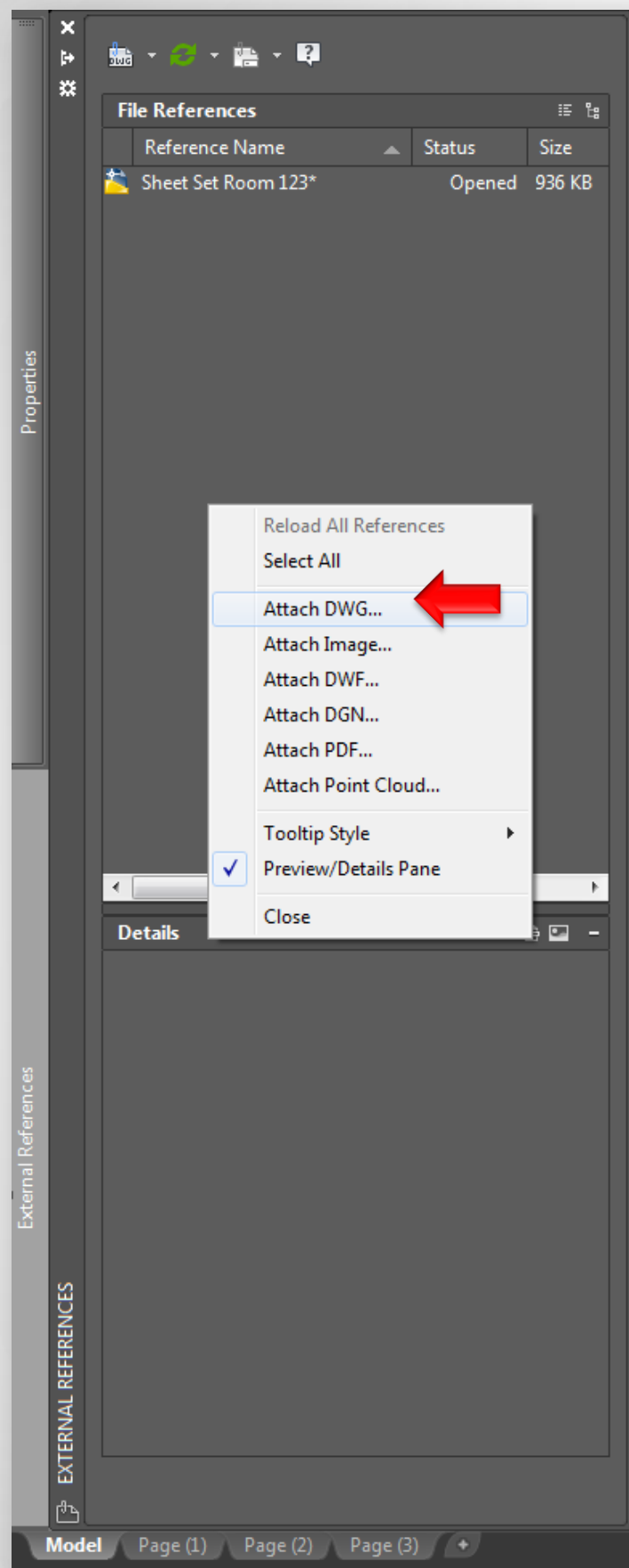
Fields (FIELD command)



AutoCAD Fields are information (data) that is stored within the DWG file or from an external data file (like SSM's **dst** files). These fields are very versatile and are able to be edited with ease. Editing one will change all instances of that field (similar to blocks), but can be used across multiple DWG files.

Views (VIEW command)



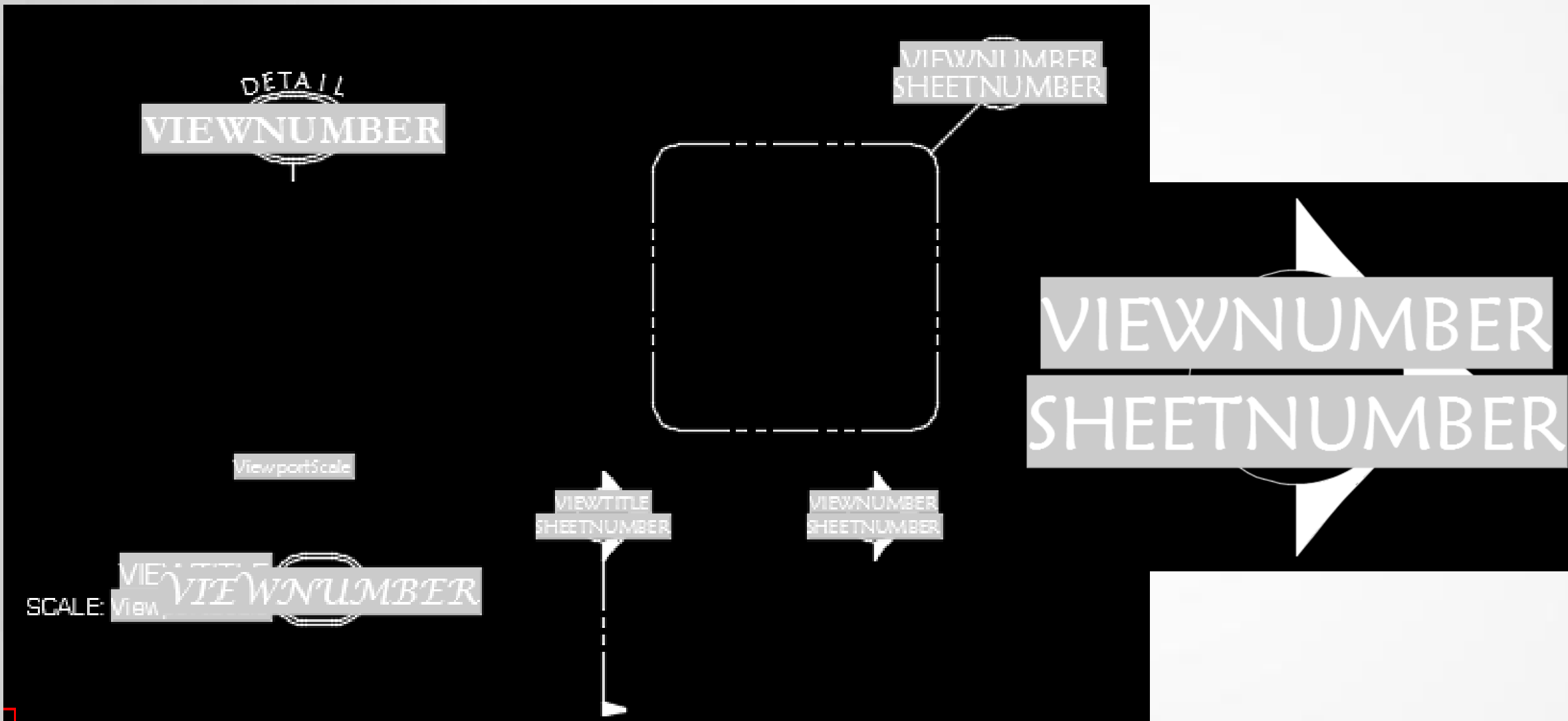


X-References (XREF command)

X-References (XREF command)
X-References are DWG files that are referenced within another DWG file. Simply put, it is a drawing inside a drawing.

Convert current borders, callouts, and page layouts for use with Sheet Set Manager

Callout Setup

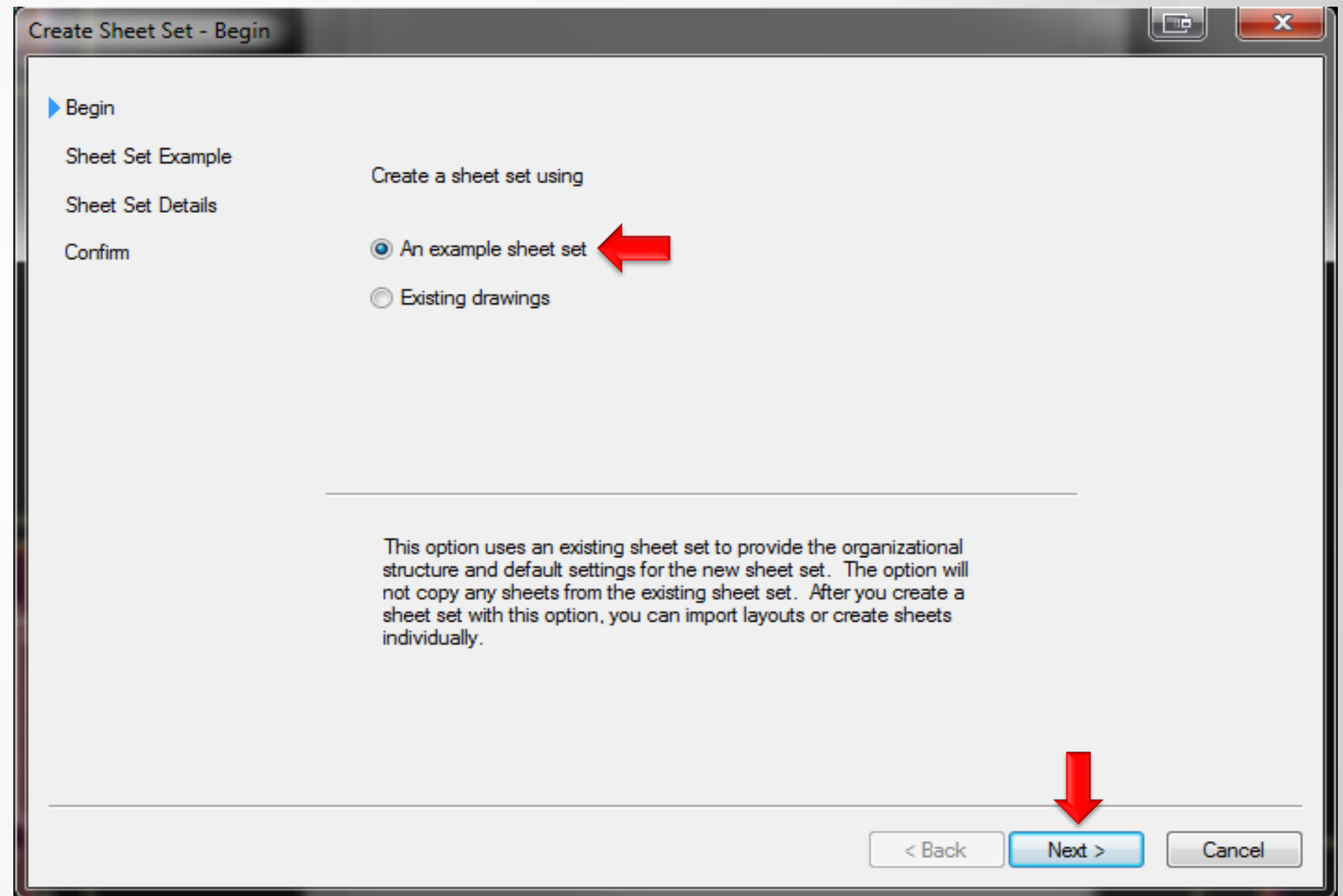
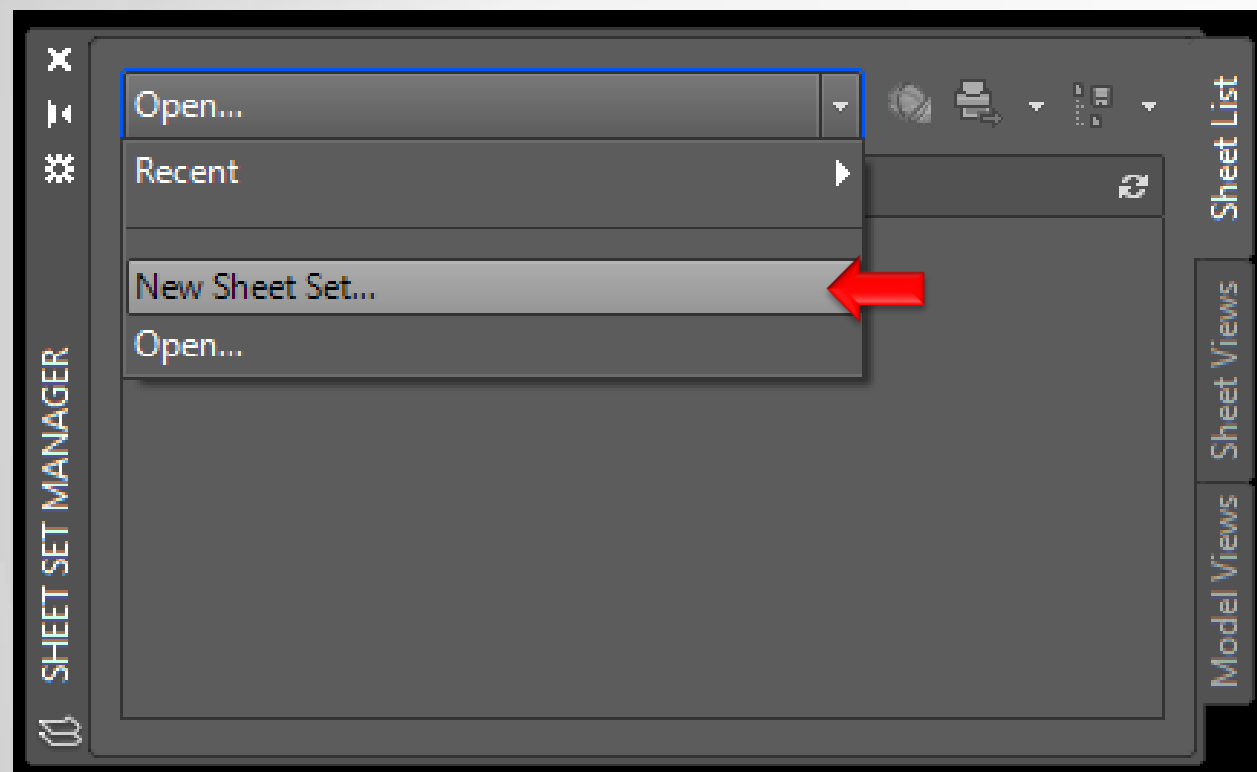


These callout blocks have been setup to automated view number and sheet number Sheet Set Fields.

Set up and use AutoCAD software's Sheet Set Manager

Now that these DWT files are setup. Let's start the SSM setup process by selecting "New Sheet Set..." in the SSM side bar, and follow the steps laid out below.

Sheet Set Setup



Sheet Set Setup (Cont.)

Create Sheet Set - Sheet Set Example

Begin

Sheet Set Example

Sheet Set Details

Confirm

☒ Select a sheet set to use as an example

- Architectural Imperial Sheet Set
- Architectural Metric Sheet Set
- Civil Imperial Sheet Set
- Civil Metric Sheet Set
- Manufacturing Imperial Sheet Set
- Manufacturing Metric Sheet Set
- New Sheet Set**

☐ Browse to another sheet set to use as an example

local\autodesk\autocad 2015\r20.0\enu\template\New Sheet Set.dst ...

Title: New Sheet Set

Description: Use the New Sheet Set.dst to create a basic new sheet set without subsets, specified template or pagesetup override file.

< Back Next > Cancel

Create Sheet Set - Sheet Set Details

Begin

Sheet Set Example

Sheet Set Details

Confirm

Name of new sheet set:

New Sheet Set (1)

Description (optional):

Use the New Sheet Set.dst to create a basic new sheet set without subsets, specified template or pagesetup override file.

Store sheet set data file (.dst) here:

X:\Dirig Design\AutoCAD\AutoDesk University 2014\Sheet Set Sample \ ...

Note: The sheet set data file should be stored in a location that can be accessed by all contributors to the sheet set.

☐ Create a folder hierarchy based on subsets

Sheet Set Properties

< Back Next > Cancel

Sheet Set Setup (Cont.)

Sheet Set Properties - New Sheet Set (1)

Sheet Set	
Name	New Sheet Set (1)
Sheet set data file	X:\Dirig Design\AutoCAD\AutoDesk University 2014\Sheet Set Sample v1\New Sheet Set (1).dst (v1.1)
Description	Use the New Sheet Set.dst to create a basic new sheet set without subsets, specified template or pagesetup override file.
Model view	
Label block for views	
Callout blocks	
Page setup overrides file	
Project Control	
Project number	
Project name	
Project phase	
Project milestone	
Sheet Creation	
Sheet storage location	X:\Dirig Design\AutoCAD\AutoDesk University 2014\Sheet Set Sample v1
Sheet creation template	
Prompt for template	Yes

Edit Custom Properties... OK Cancel Help

Create Sheet Set - Confirm

Begin

Sheet Set Example

Sheet Set Details

Confirm

Sheet Set Preview:

- New Sheet Set (2)
 - General
 - Architectural
 - Structural
 - Electrical
 - Mechanical
 - Plumbing
 - Fire Protection
 - Civil
 - Landscape

Note: References to sheets in the source sheet set are not copied.

Sheet Set Copied

Architectural Imperial Sheet Set

Sheet set data file copied:
C:\Users\Dirig Design 06\appdata\local\autodesk\autocad 2015\20.0\enu\template\Architectural Imperial Sheet Set.dst

New Sheet Set

Sheet set name:

< Back Finish Cancel

The Sheet Set DST file has been created, and has been opened in the SSM side bar menu.

Right Click to Access Sheet Set Options

Select To Add a New Sheet (This Creates a New DWG File for Each Sheet Added)

This Creates a Sheet Set “Separator” For Greater Organization

This Is For Adding Layouts from Existing DWG Files

Publishing Options (This Will Publish All or Selected Sheets in the Set)

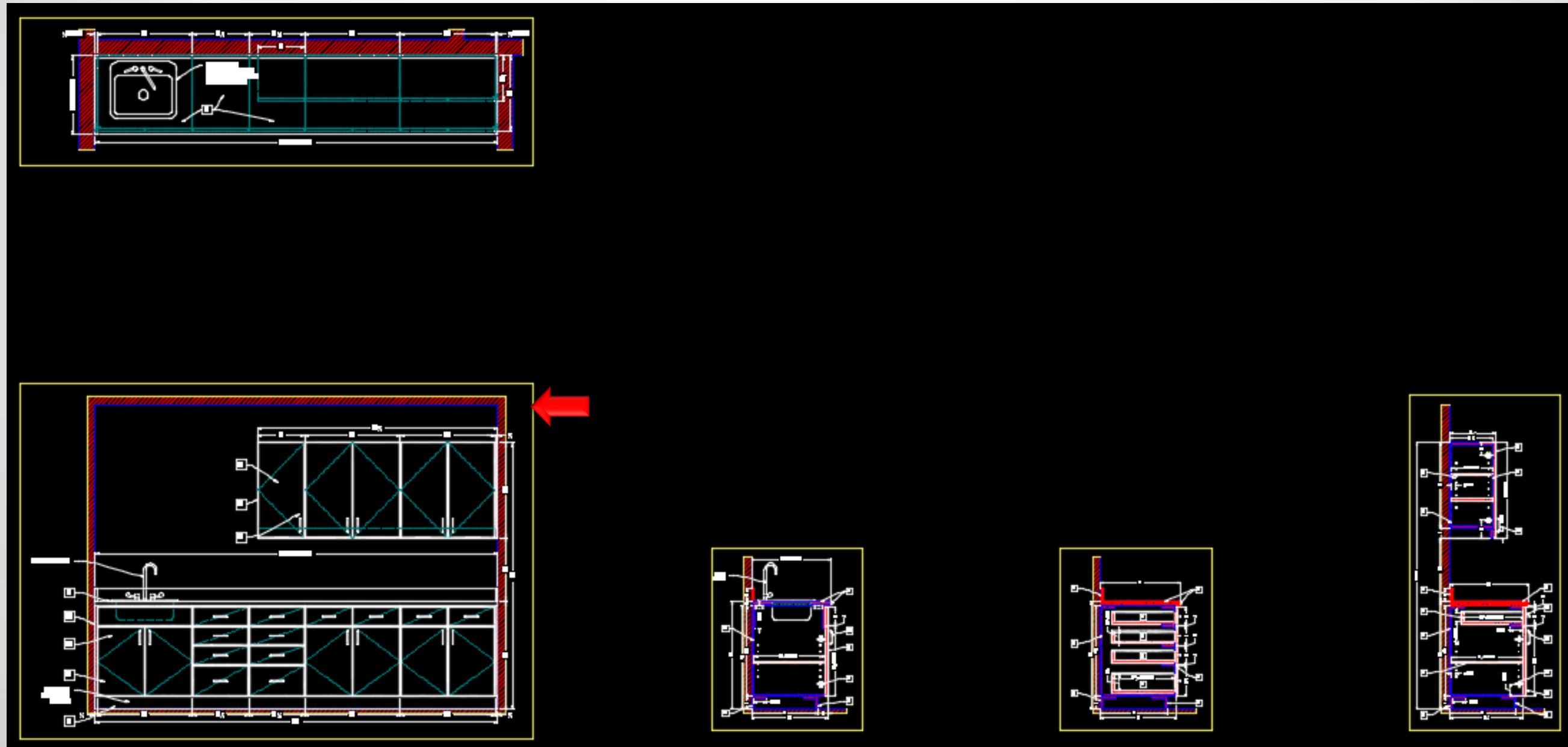
For Transmitting Sheet Sets to Other Users (Out Of Network)

Access the Sheet Set Properties to Edit Project Data

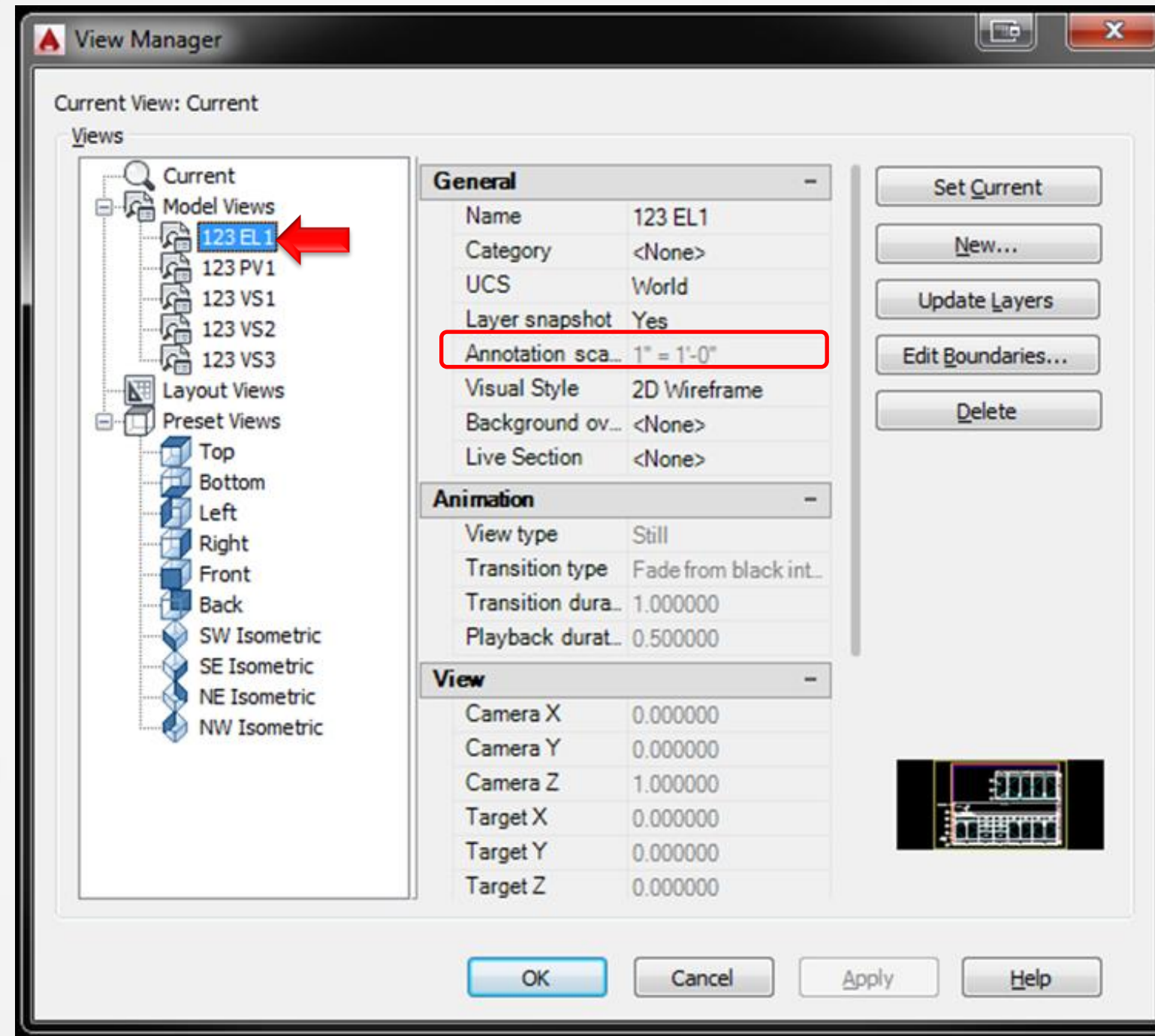
SHEET SET DRAWING SETUP

For the Standard DWG setup, model space geometry is created and then viewported in paperspace (within the same DWG file) as described above.

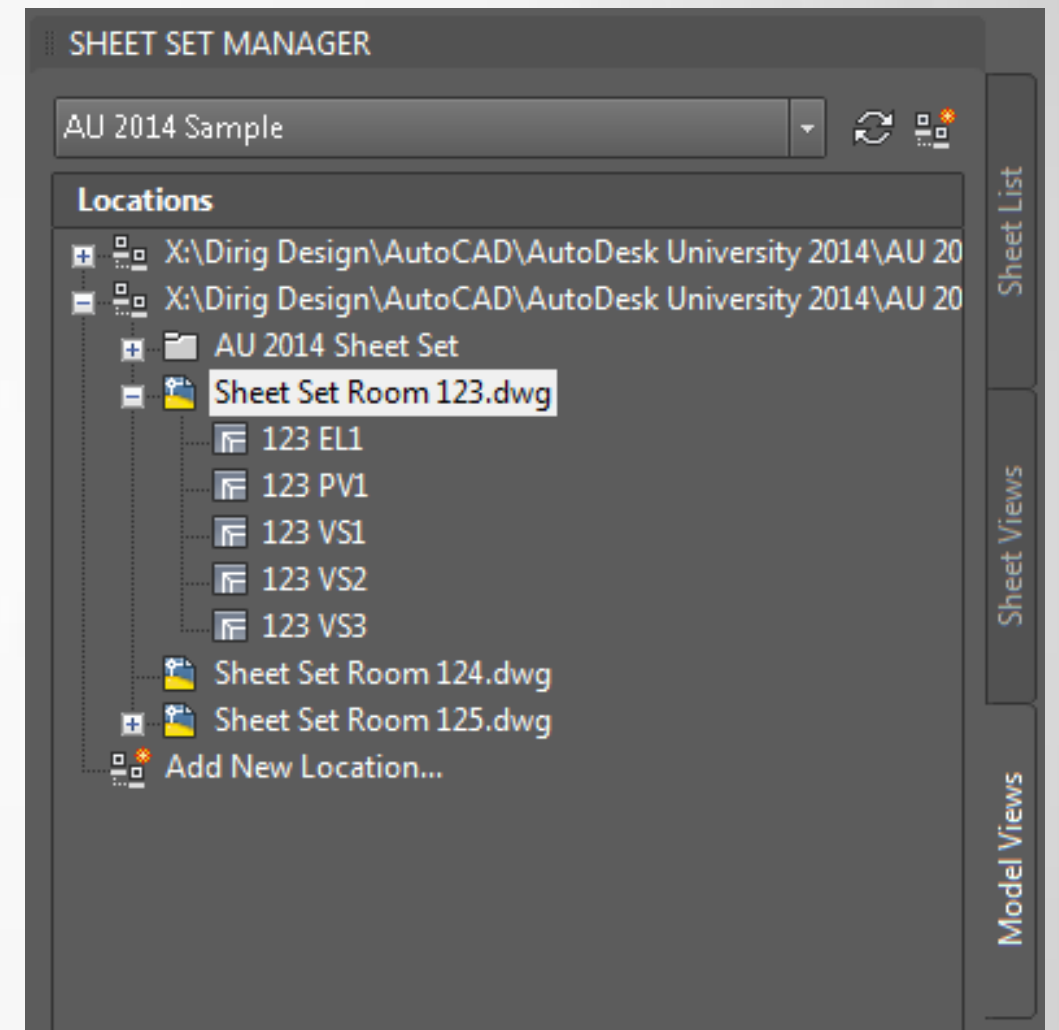
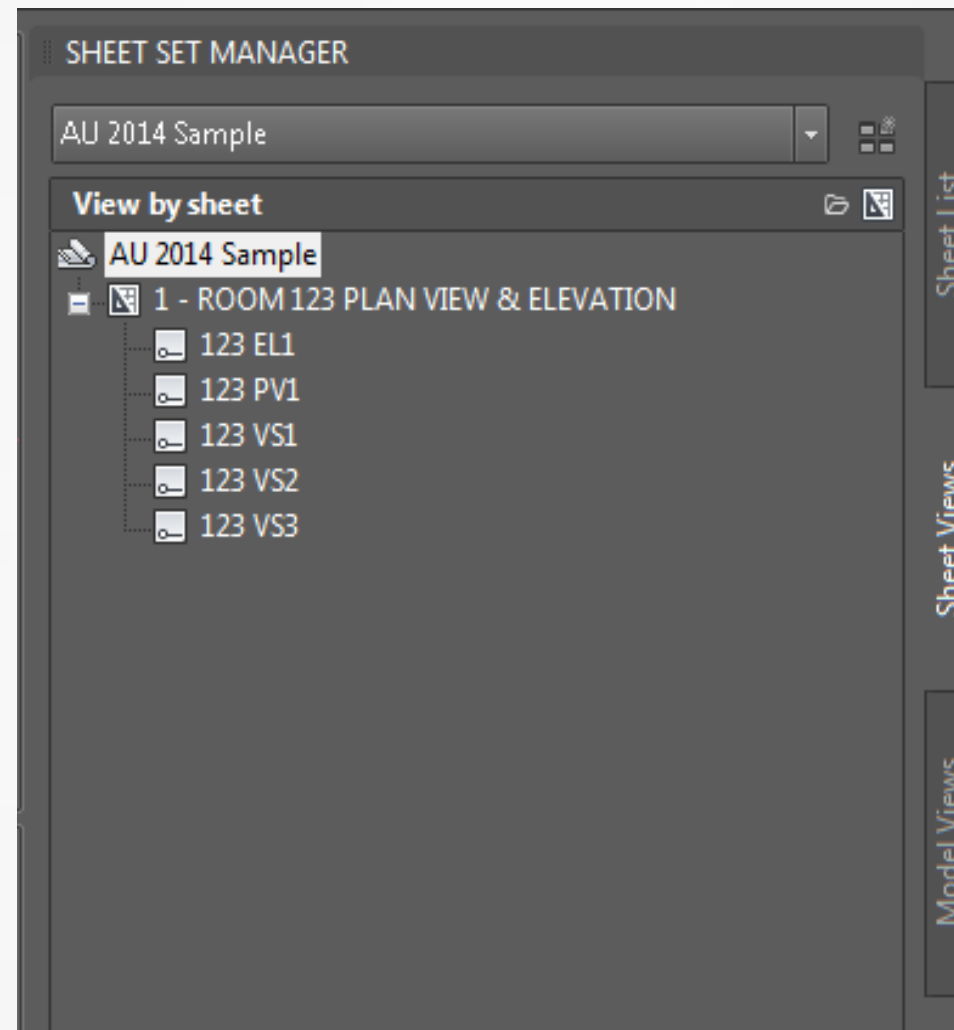
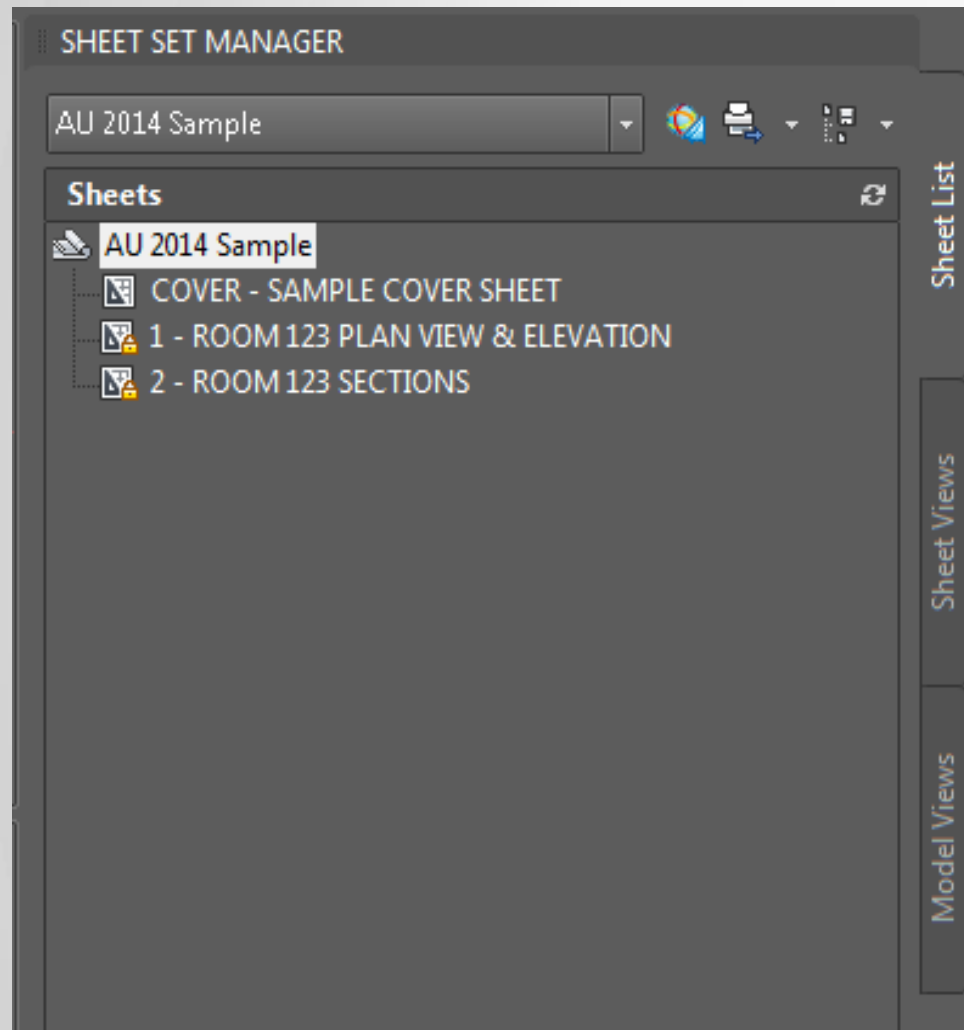
For Sheet Set DWG setup, model space geometry is created and dimensioned, but instead of viewporting it in paperspace of the same DWG file, only views are created (making sure the annotative scale is set to the desired scale).



Typical View Setup

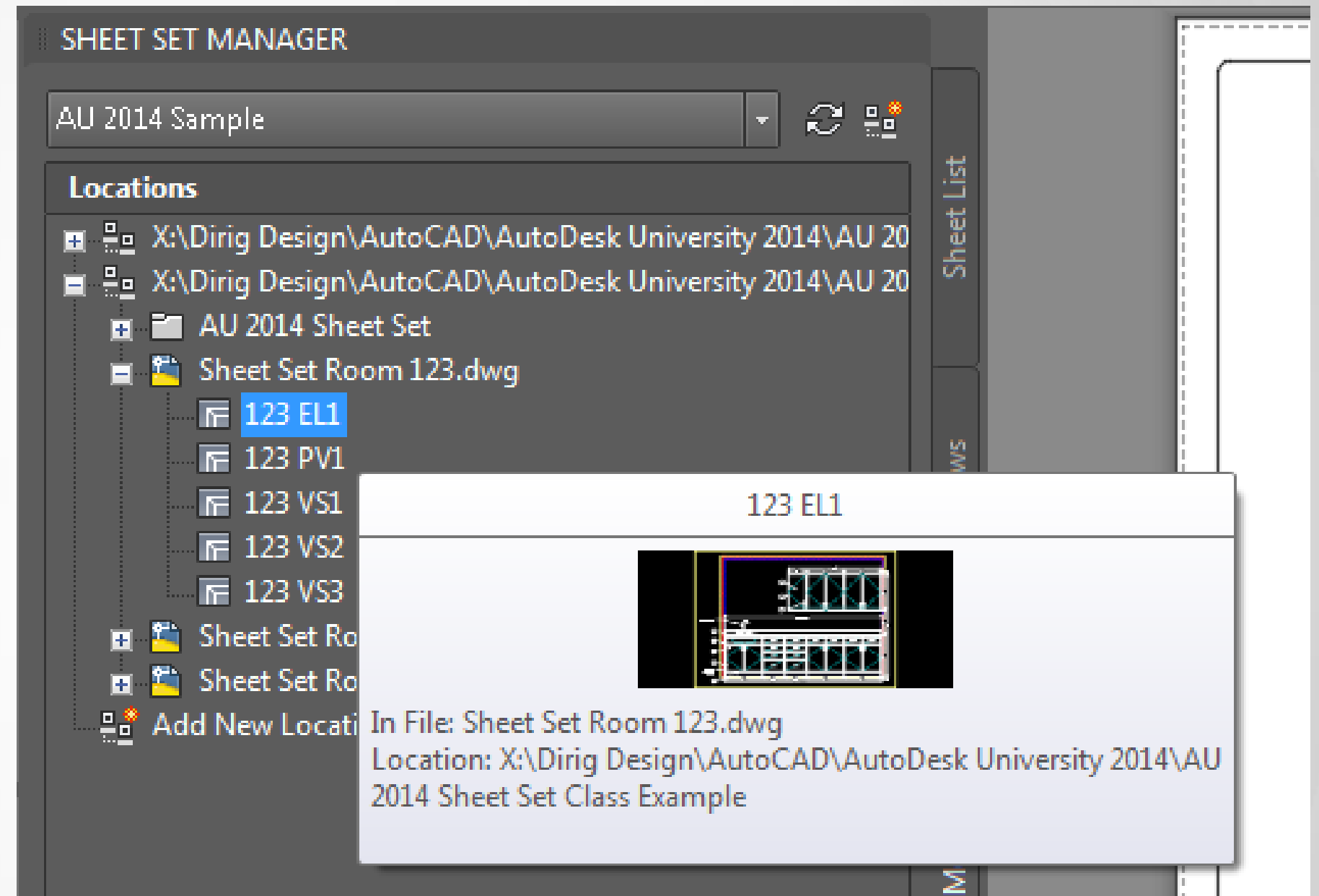
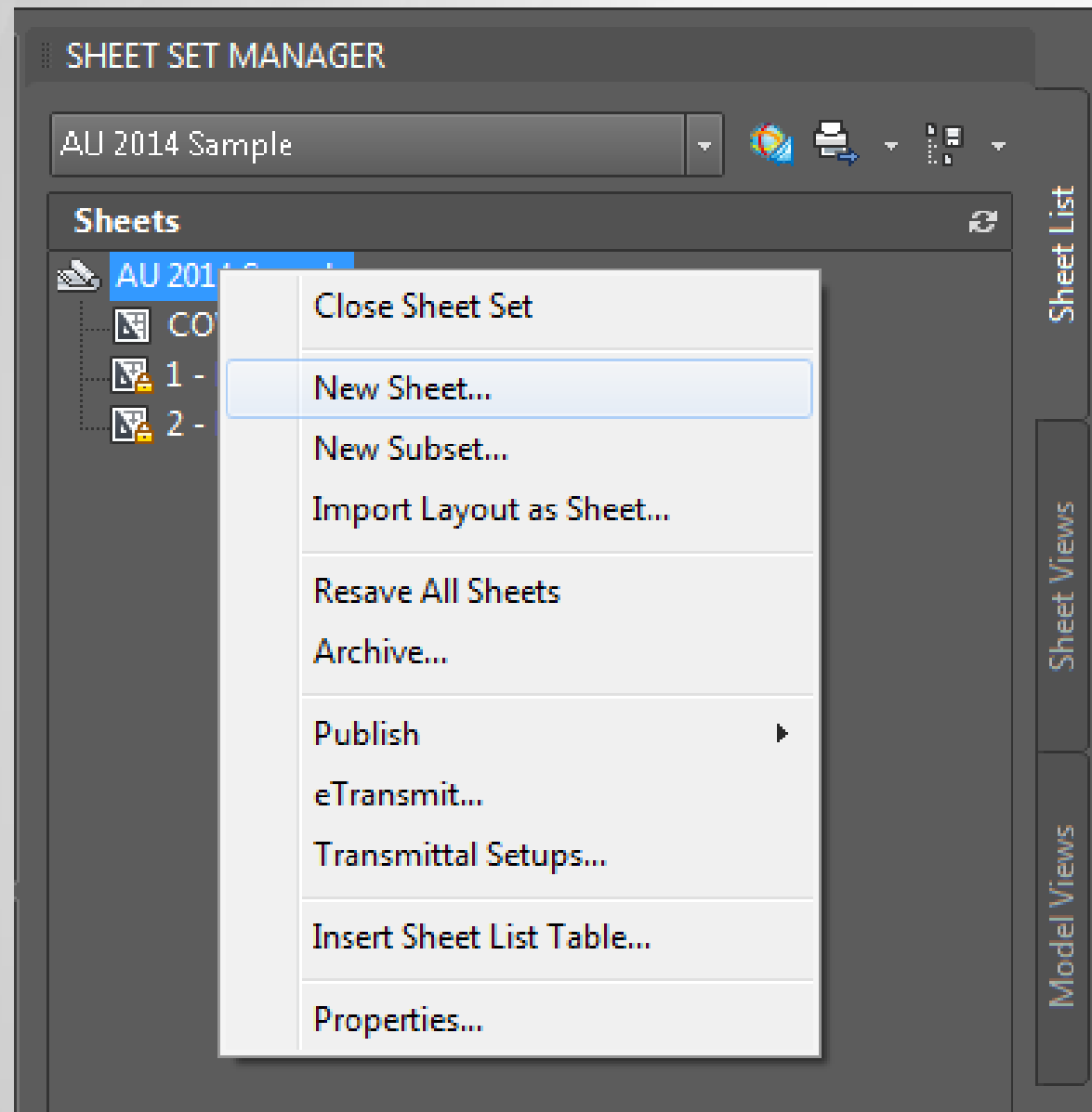


The Sheet Set Manager Tabs

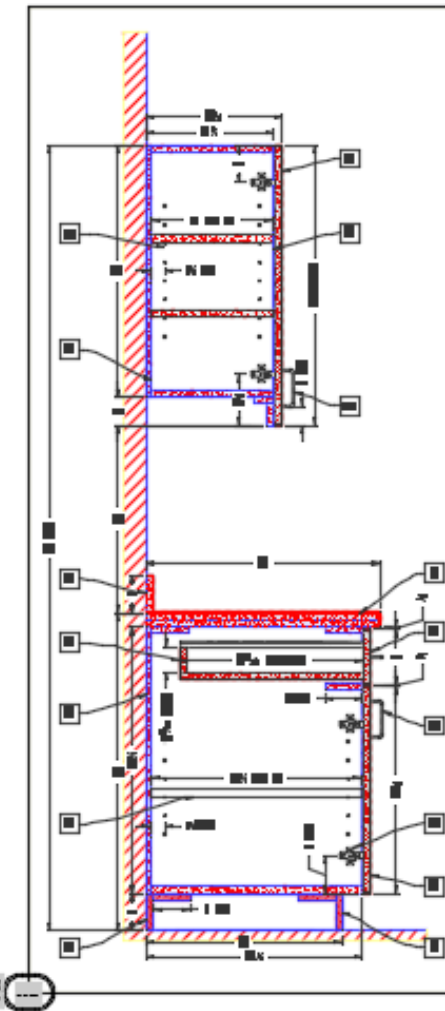
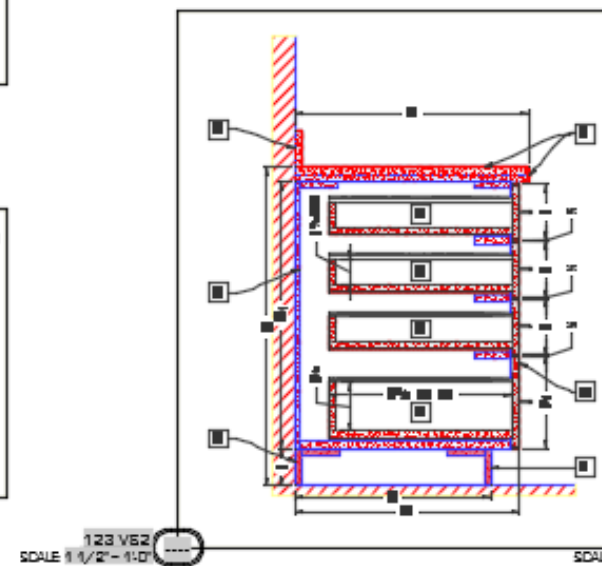
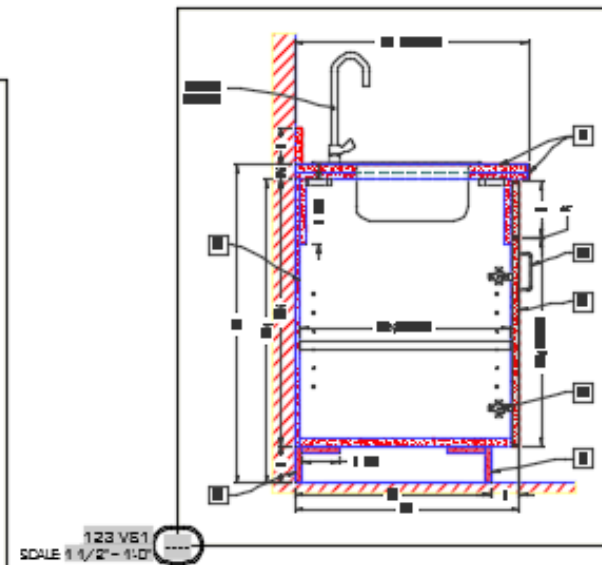
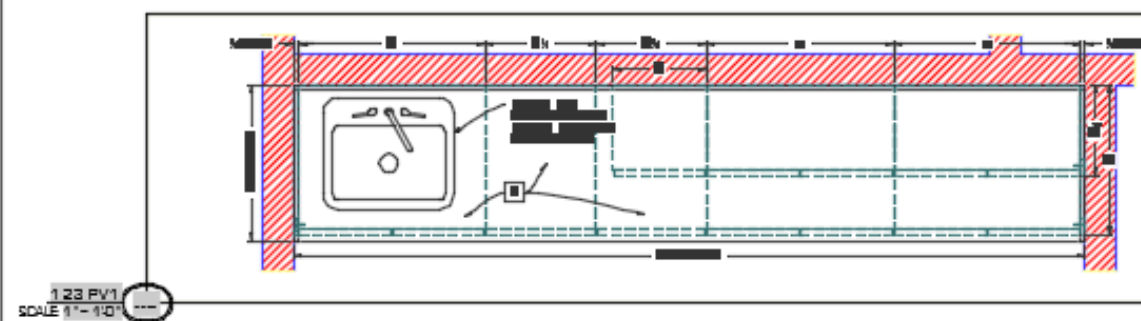
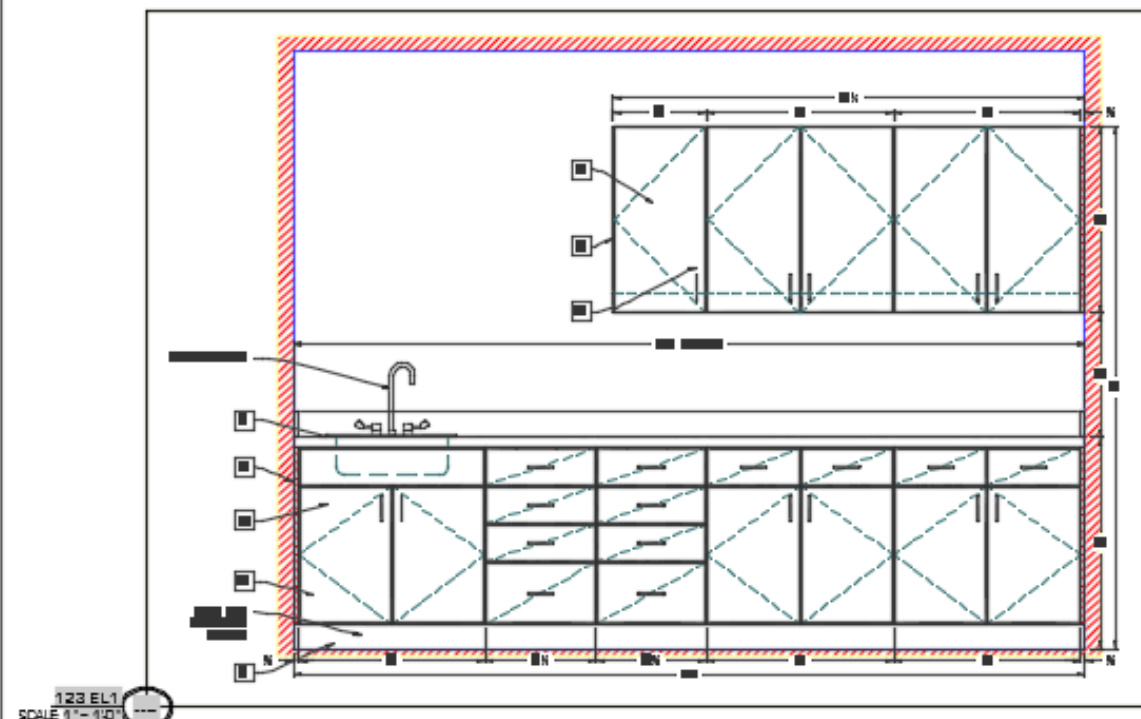


**Save hours of time by letting AutoCAD
software automate the page layout process**

Laying Out The Sheet

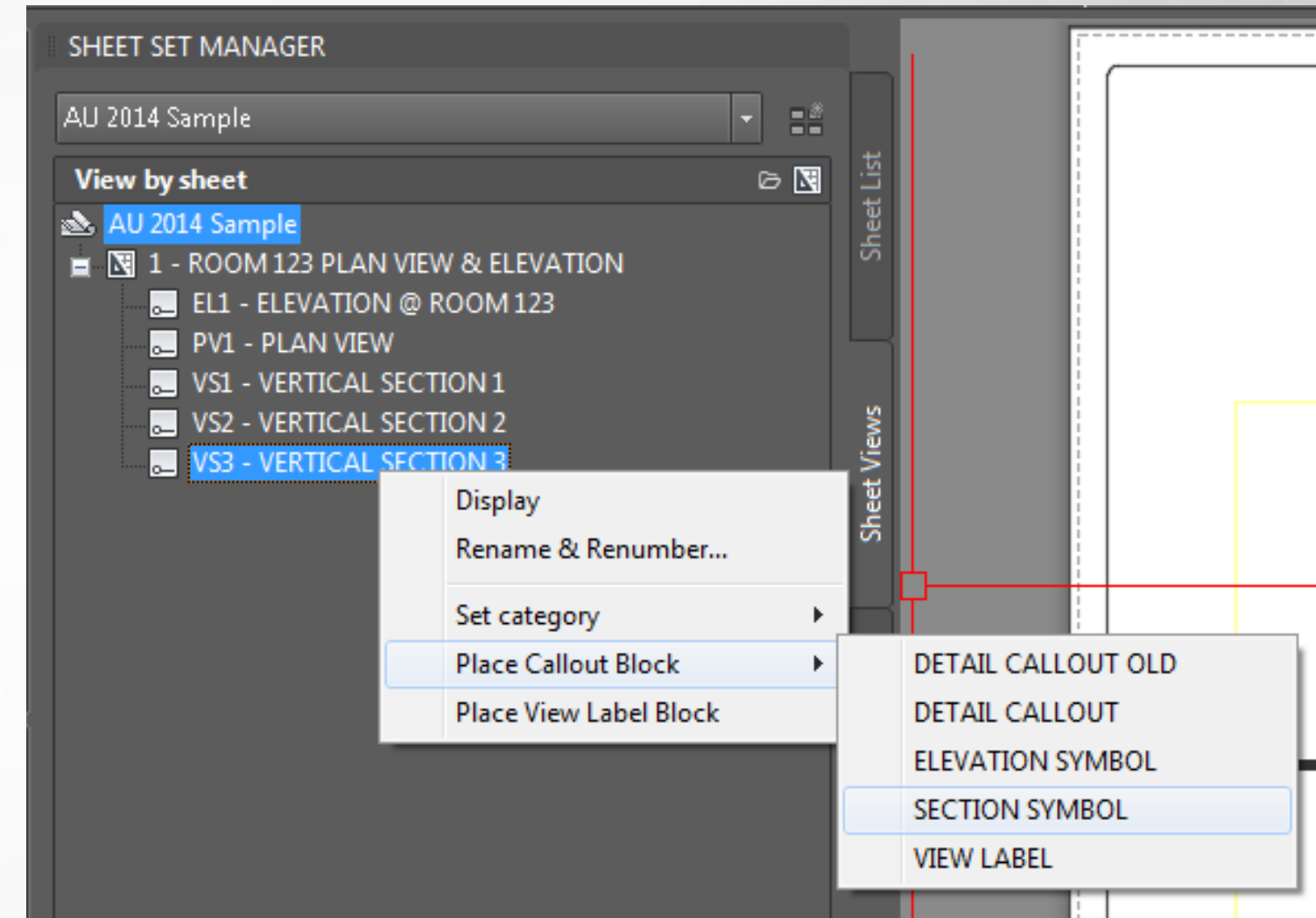
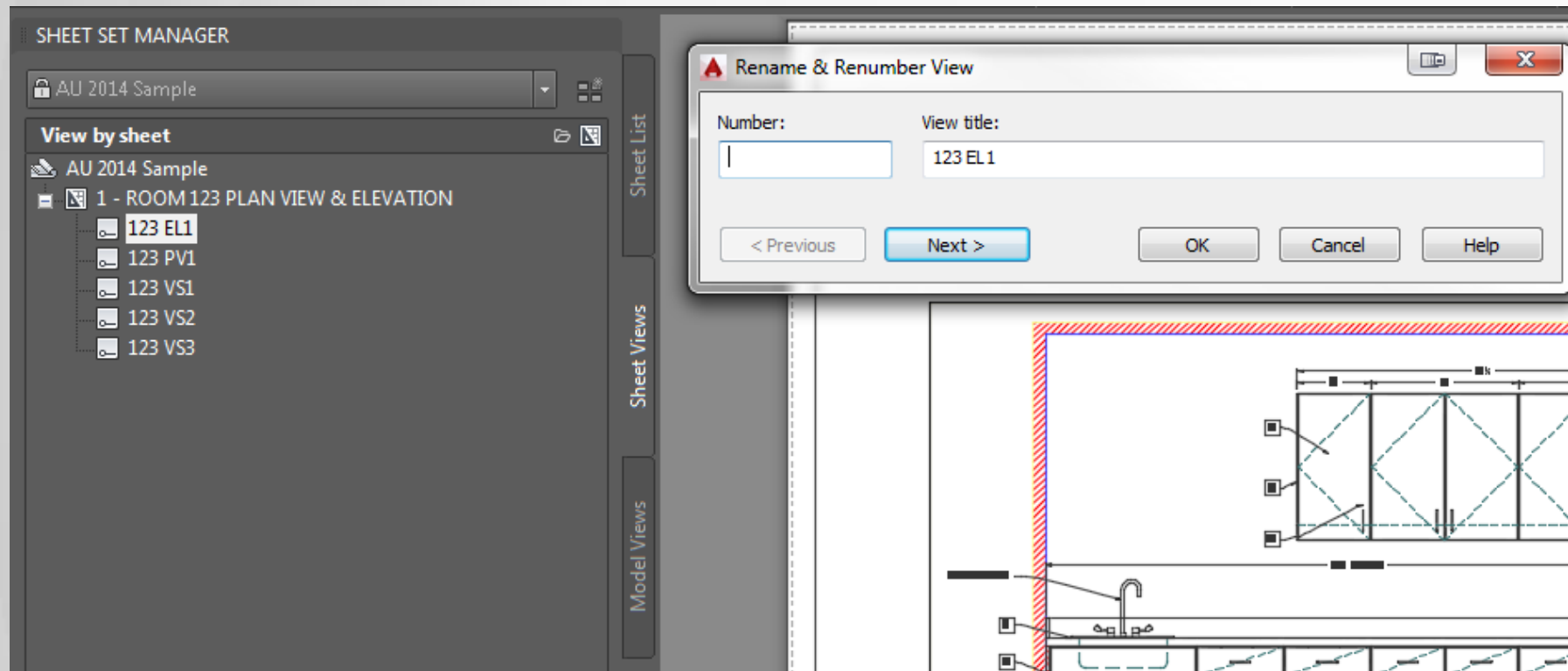


Laying Out The Sheet (Cont.)



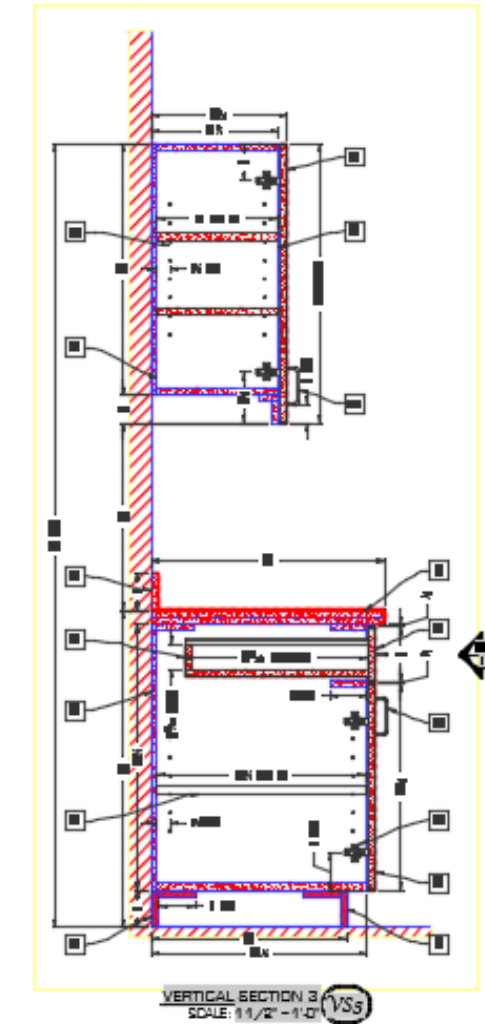
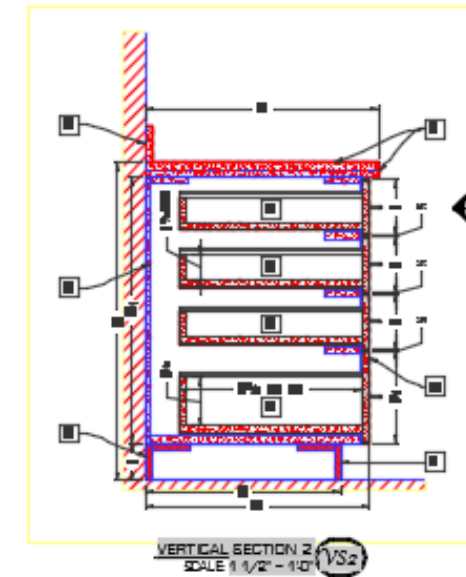
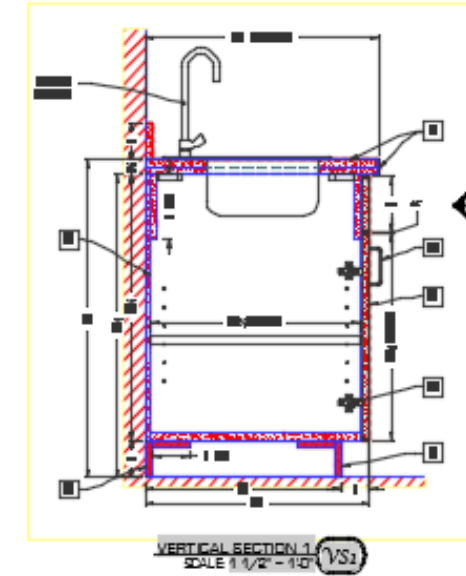
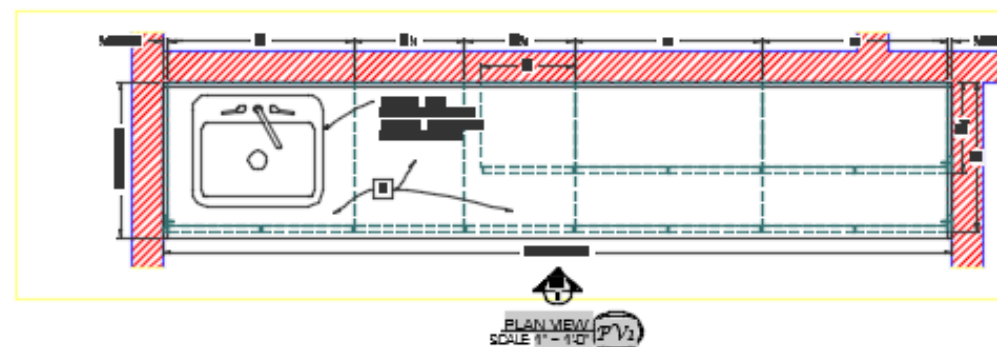
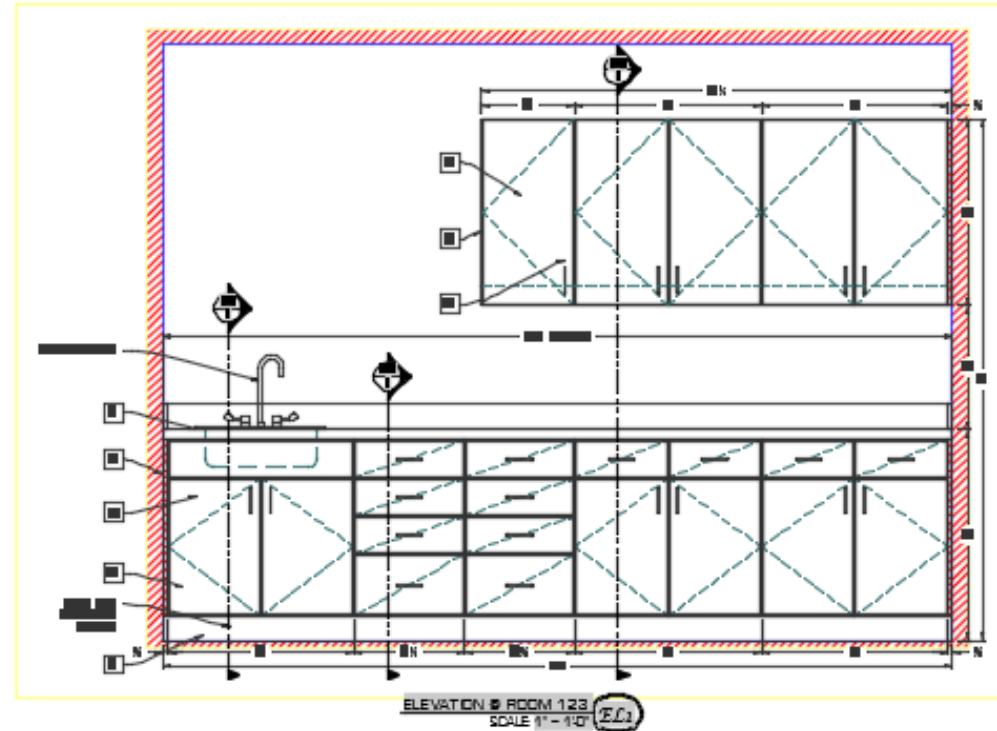
SPECIFICATIONS:										
<div><div></div><div>1</div></div>	PROJECT DESCRIPTION		1234 AU 2014 SAMPLE							
	FASE DESCRIPTION		ROOM 123 PLAN VIEW & ELEVATION							
	<div><div></div><div>DIRIG DESIGN</div><div>WHERE DESIGN MEETS REALITY</div></div>		SCALE		AS NOTED		MEMOR			
			DATE		11.25.2014					
			DRAWN BY		DIRIG					
			CHECKED BY		DO					
			PROJECT NUMBER		1234					
	DIRIG DESIGN, INC.		1007 500 4040 D							
	P.O. BOX 294		www.dirigdesign.com							
	WELLSFLEECE, NY 13816		info@dirigdesign.com							

Laying Out The Sheet (Cont.)



Laying Out The Sheet (Cont.)

- Arrange Viewports To Desired Location
- Change Viewport Layers To Viewport
- Rename & Number As Needed
- Adjust View Labels As Needed



SPECIFICATIONS:

PROJECT DESCRIPTION	1234 AU 2014 SAMPLE	REVISIONS	
PROJECT LOCATION	ROOM 123 PLAN VIEW & ELEVATION	SCALE	AS NOTED
		DATE	11/2/2014
		DRAWN BY	DRGC
		CHECKED BY	CO
		PROJECT NUMBER	1234
DIRIG DESIGN <small>WHERE DESIGN MEETS REALITY</small> DIRIG DESIGN, INC. P.O. BOX 88 WELLISVILLE, NY 13859 607.863.0010 www.dirigdesign.com admin@dirigdesign.com			
SHEET	1		

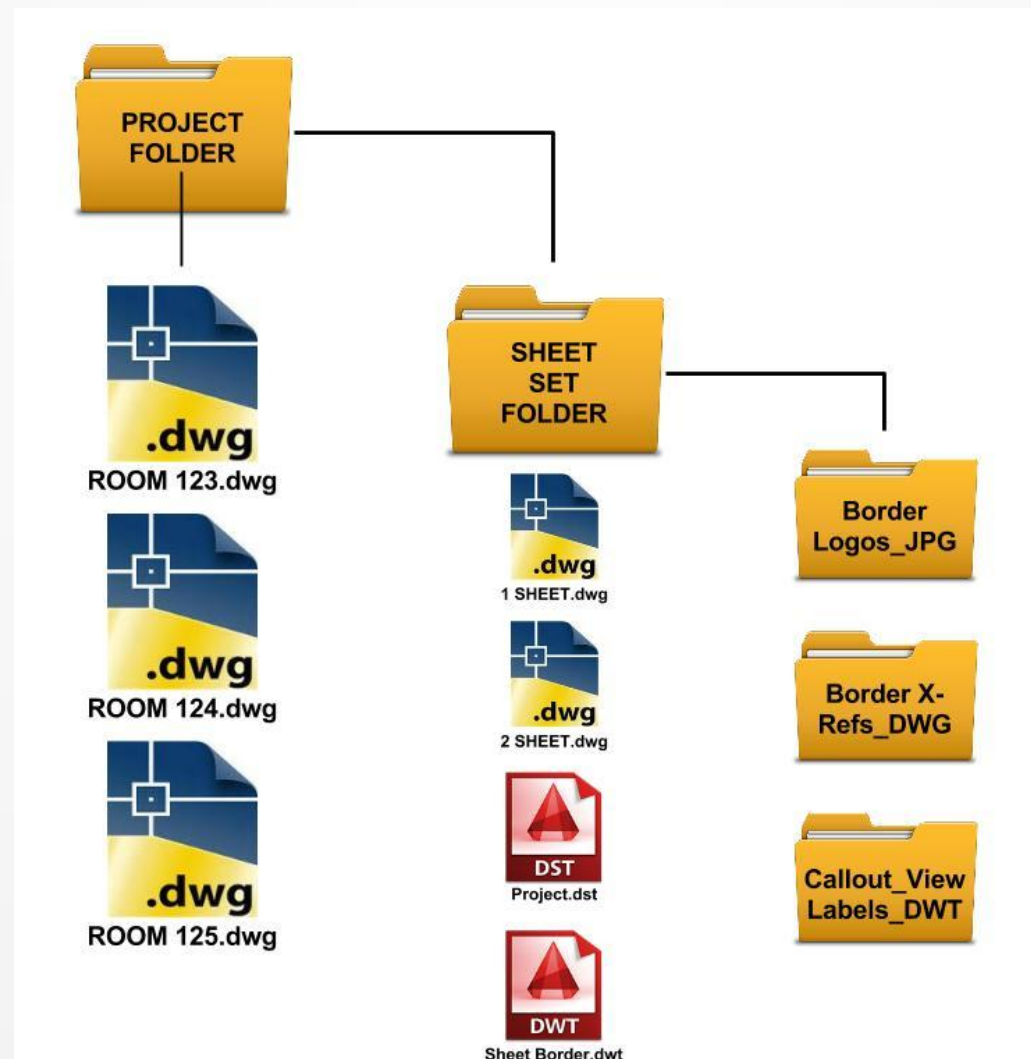
Decrease overall drawing-file size through the use of Sheet Set Manager

Sheet Set Manager gives the ability to separate whatever you need into individual DWG files (Rooms, Floors, etc.) while still being able to be a part of the sheet set and be published together. Smaller files equal faster work; faster work equals more profit. AutoCAD's Sheet Set Manager has changed the way my business works. It has decreased time in revision work and time editing drawings. Below is a simple folder structure for SSM that has worked very well for my business and I hope it can help yours.

Project Folder is the Working Folder

Sheet Set Folder is the SSM Folder

Other Folders are for the page border setup



Please fill out the Class survey



If you have any further questions or comments please feel free to contact me at
adam@dirigdesign.com

Thank you!

I hope you have found this class about AutoCAD's Sheet Set Manager informative.

