

PD1392 - Setting up Isometrics in Autodesk® AutoCAD® Plant 3D

Carsten Beinecke

Product Manager
CAD STUDIO ABCOM GmbH, Germany



AUTODESK UNIVERSITY 2013

Join us on Twitter: #AU2013



Key learning objectives

At the end of this class, you will be able to:

- Setup Isometrics from start to finish
- Use Tips & Tricks outside the User Interface
- Use your own Isometric Symbols
- Setup your title block



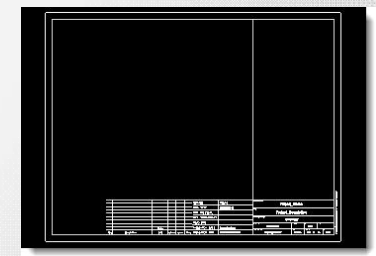
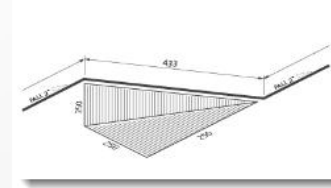
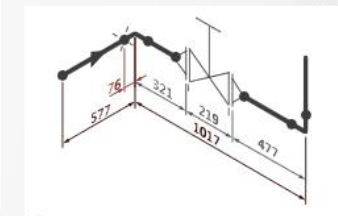
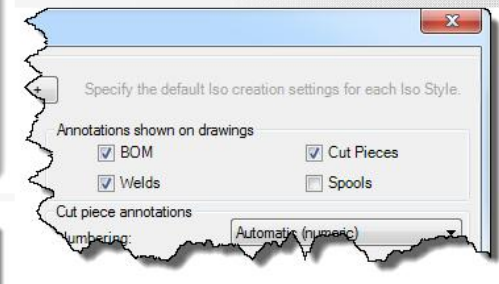
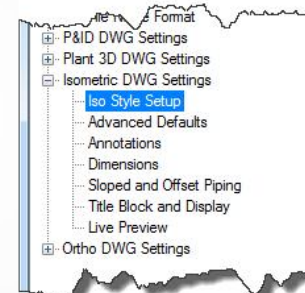
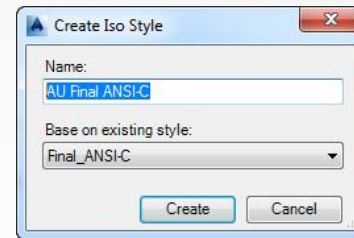
An aerial perspective of a city landscape. In the foreground, a multi-lane bridge spans a body of water, with a red car visible on it. To the right of the bridge is a green park area with trees and a small blue pond. In the background, a large stadium with a circular roof is visible, followed by a dense urban skyline with various skyscrapers under a clear blue sky.

Setup Isometrics from start to finish



Setting up Isometrics from start to finish

- Create your own Iso-Style
- Configure general settings
- Setup “Advance Defaults”
- Adapt Annotations
- Check Dimensioning
- Define Sloped/Offset layout
- Modify Frame/Title Block



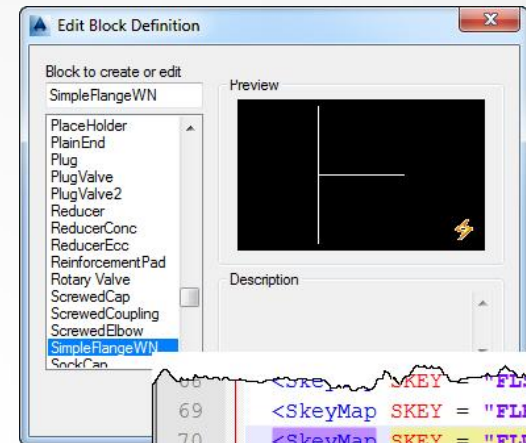
An aerial view of a city featuring a large stadium, a bridge over a river, and a city skyline in the background. The scene is rendered in a stylized, semi-transparent manner, suggesting a digital or architectural visualization. The title text is overlaid on a semi-transparent white band across the middle of the image.

Tips & Tricks outside the User Interface

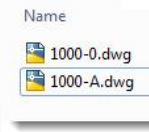


Tips & Tricks outside the User Interface

- Global Files
 - IsoSymbolStyles.dwg
 - IsoSkeyAcadBlockMap.xml
- Files of an Iso-Style
 - IsoConfig.xml
 - Iso.dwt



```
68 <SkeyMap SKEY = "FLSW" AcadBlock = "Flange" />  
69 <SkeyMap SKEY = "FLRC" AcadBlock = "Flange" />  
70 <SkeyMap SKEY = "FLWN" AcadBlock = "SimpleFlangeWN" />  
71 <SkeyMap SKEY = "FOWN" AcadBlock = "FlangeWN" />  
72 <SkeyMap SKEY = "FOWN" AcadBlock = "FlangeWN" />
```



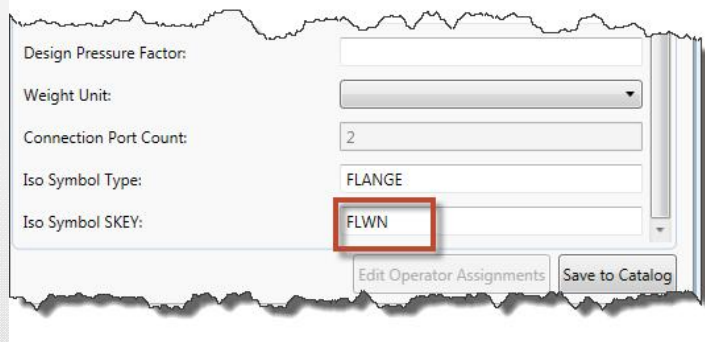
An aerial perspective of a city landscape. In the foreground, a multi-lane bridge with a rainbow-colored line along its edge spans a body of water. A red car is visible on the bridge. To the right of the bridge is a green park area with trees and a small blue pond. In the background, a large stadium with a circular roof is visible, followed by a dense city skyline with various skyscrapers under a clear blue sky.

Use your own Isometric Symbols



Use your own Isometric Symbols

- Copy existing Symbol
- Change/Draw the new Symbol
- Check Dynamic functions
- Set relation-ship for SKEY/Blockname
- Use new SKEY if necessary



Design Pressure Factor:

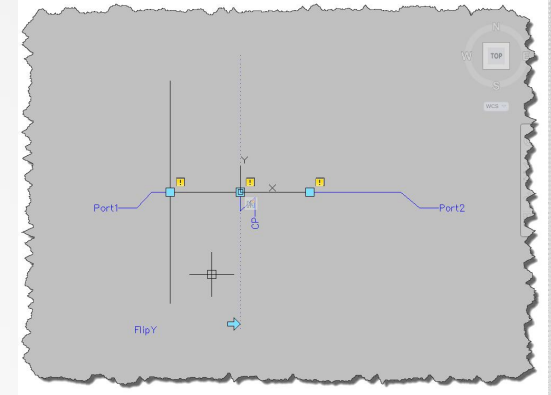
Weight Unit:

Connection Port Count:

Iso Symbol Type:

Iso Symbol SKEY:

```
68 <SkeyMap SKEY = "FLSW" AcadBlock = "Flange"/>  
69 <SkeyMap SKEY = "FLRC" AcadBlock = "Flange"/>  
70 <SkeyMap SKEY = "FLWN" AcadBlock = "SimpleFlangeWN"/>  
71 <SkeyMap SKEY = "FOWN" AcadBlock = "FlangeWN"/>  
72 <SkeyMap SKEY = "FOWN" AcadBlock = "FlangeWN"/>
```



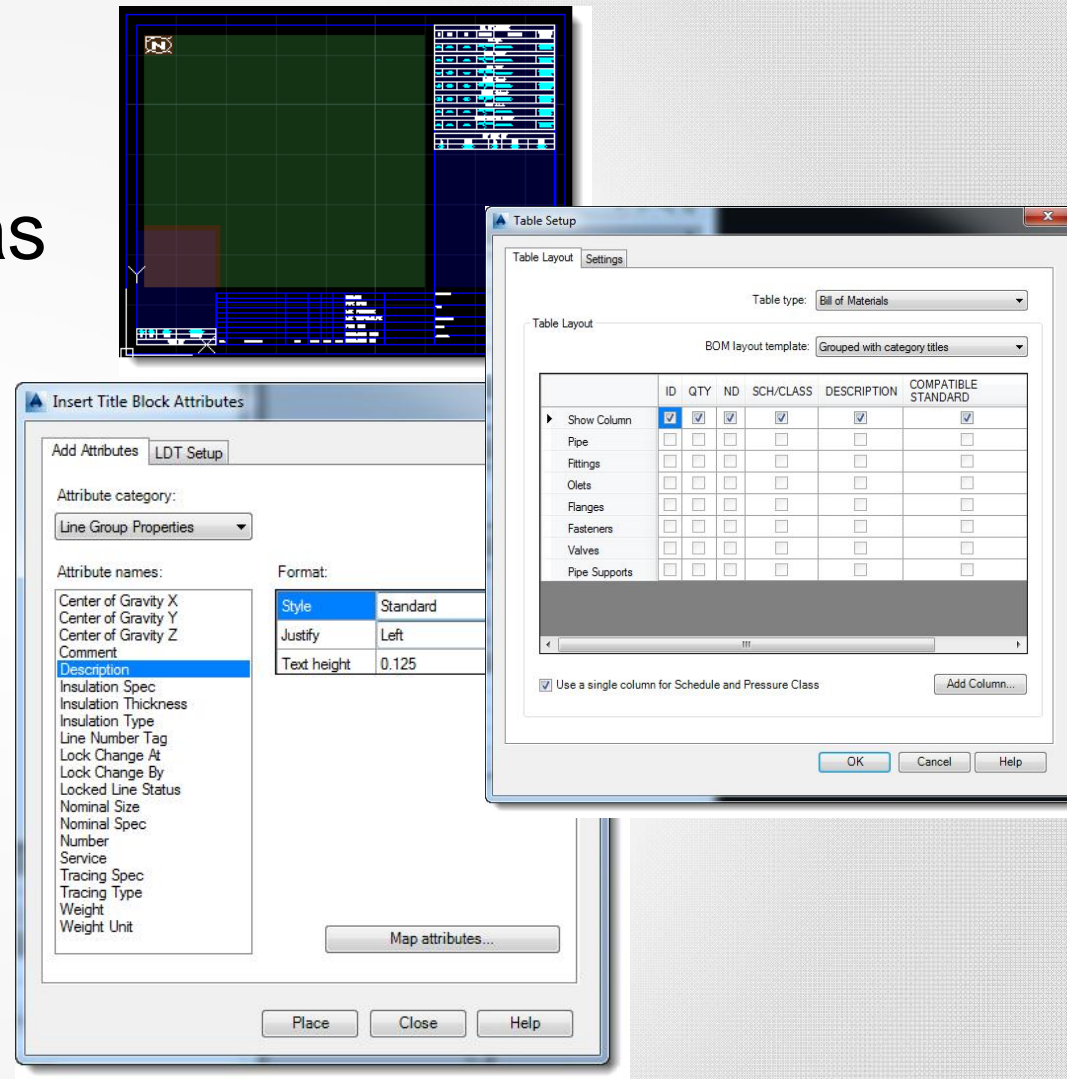
An aerial perspective of a city landscape. In the foreground, a multi-lane bridge spans a wide river. A red car is visible on the bridge. To the right of the bridge, there's a green park area with trees and a small blue pond. In the background, a city skyline with several tall skyscrapers is visible under a clear blue sky. A semi-transparent white banner with a fine grid pattern is overlaid across the middle of the image.

Setup your title block



Setup your title block

- Define Draw/No-Draw Areas
- Position Tables
- Setup Tables (e.g. BOM)
- Configure Title Block



Class summary

- Start with your own Iso-Style
- Modify your Iso-Style
- Got to the IsoConfig.xml if necessary
- Create and Map your own symbols



