

# AB1778 - As-Built and Conceptual Modeling with Autodesk® ReCap™, Autodesk® Revit®-Based Software, and Autodesk® AutoCAD®

**Dominique Pouliquen**, Director of Market Development, Reality Capture Group, Autodesk  
**Chad Studer**, President, ADSK Solutions LLC.

# Class summary

Reality capture is becoming predominant in architectural, engineering, or construction work. Using the Autodesk ReCap family of products and services in conjunction with Autodesk applications, it's now becoming very easy to design in context using as-built scanned data as a reference. This class teaches you how to take advantage of new workflows based on ReCap software for several use cases that are related to BIM, such as retrofitting a renovation, conceptual modeling, and so on, using both laser scanners and photographs.

# Key learning objectives

At the end of this class, you will be able to:

- Use reality capture workflows for BIM
- Prepare laser scans for Autodesk applications using ReCap Pro
- Create a 3D model from photos using ReCap Photo
- Use ReCap data in Autodesk AutoCAD and Autodesk Revit

# Autodesk ReCap Pro

# Autodesk® ReCap™

A family of software and services to create intelligent 3D data from photos and scans



# Autodesk® ReCap Family of Products & Services



## ReCap

- Desktop product for editing and visualizing 3D data from laser scans
- Processes scans from any device and export to Autodesk products
- Autodesk 360 cloud publishing for sharing laser scans and 3D data
- Easy-to-use with intuitive GUI



## ReCap Pro

Same features as ReCap plus:

- Snap registration for in-field data preparation and verification
- Add survey control to 3D data to tie into control and verify accuracy

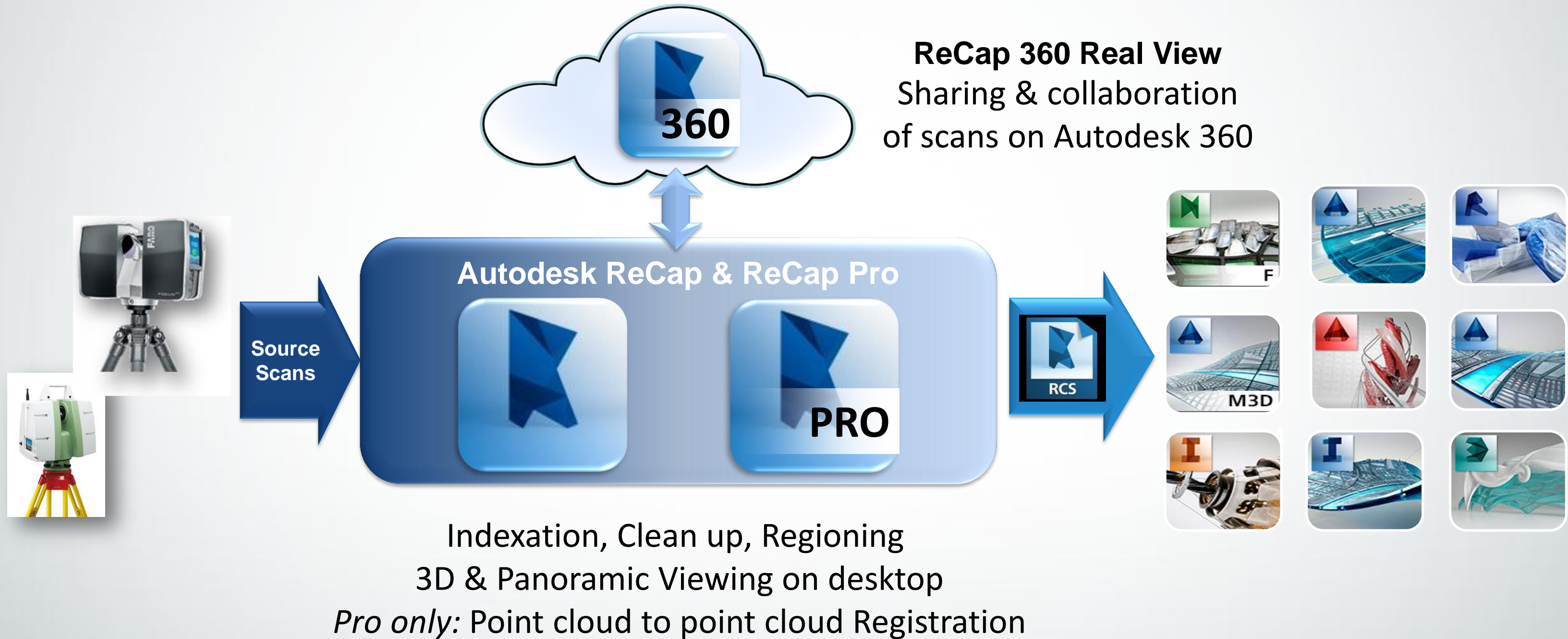


## ReCap 360

- Central portal for all Reality Capture clouds services
- **ReCap 360 Real View:** Web service for sharing and collaboration of scans
- **ReCap 360 Photo:** Photo-to-3D Web service



# Autodesk® ReCap For Laser Scanning



# Autodesk® ReCap vs ReCap Pro

Laser Scans Features	ReCap	ReCap Pro
Indexing	●	●
Visualization	●	●
Measurements	●	●
Editing	●	●
Scan Publication to ReCap 360	●	●
Scan-to-scan Registration		●
Survey Control Verification		●

*ReCap Pro is the same product (same installer) as ReCap with license-enabled additional features.*

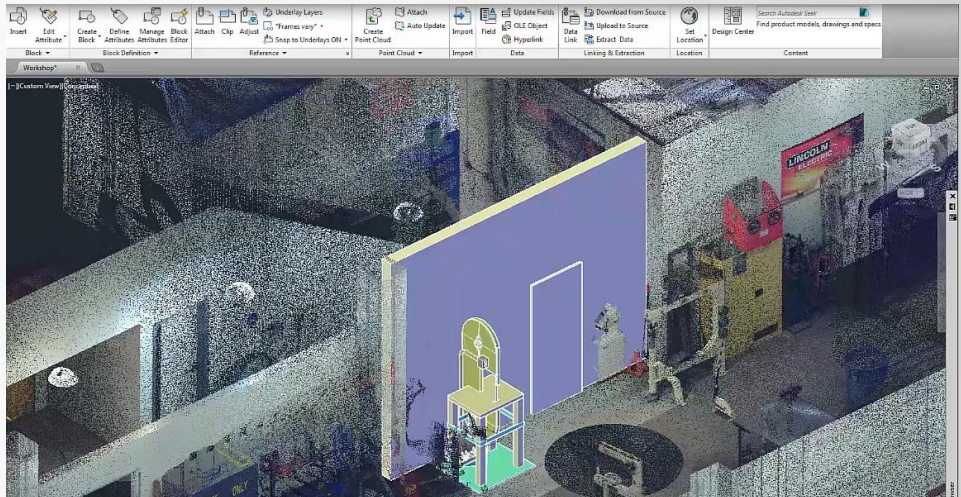
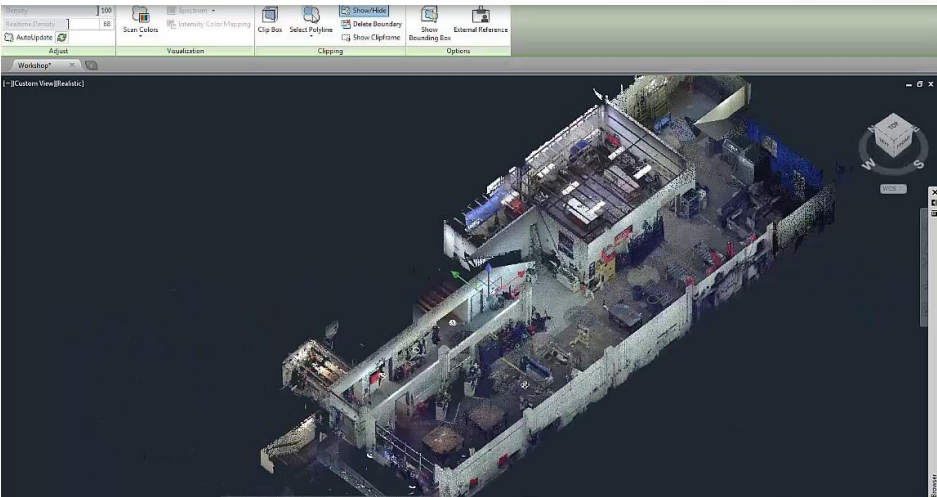
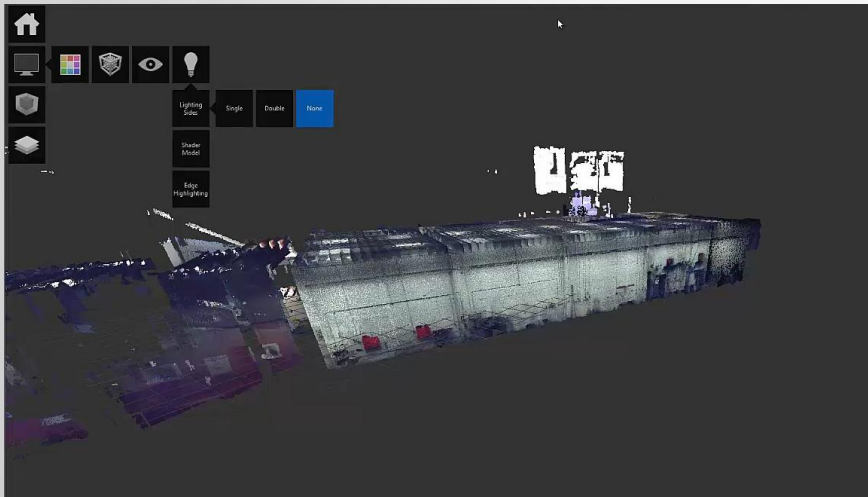


# Demo

# Autodesk® ReCap™ Industry Workflows

## Building Retrofit

Autodesk® ReCap Pro



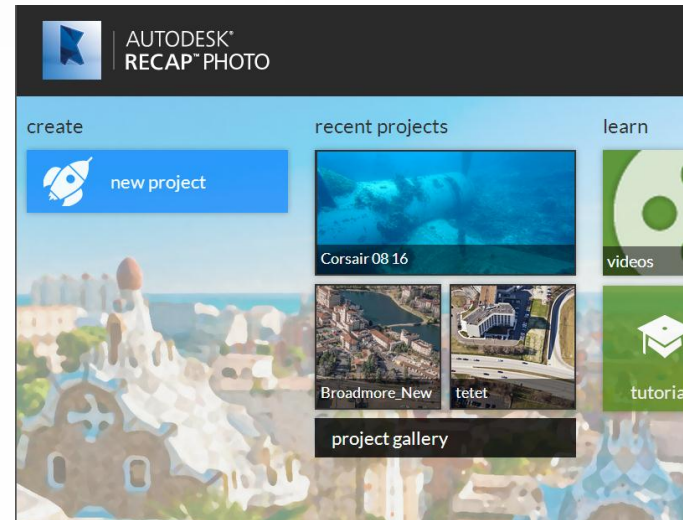
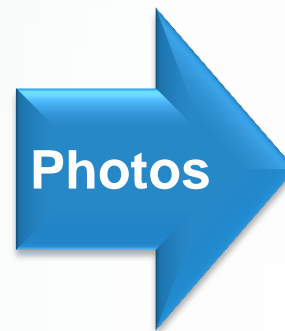
Courtesy of TechShop San Francisco



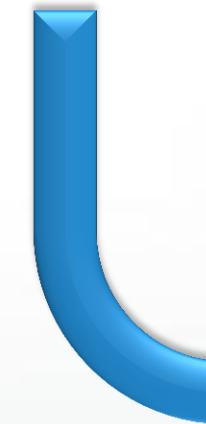
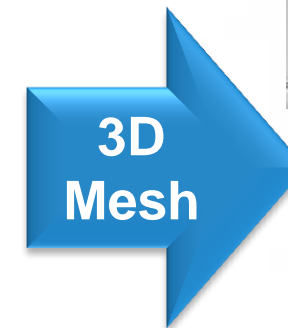
# Autodesk ReCap Photo



# Autodesk® ReCap 360 Photo



<http://recap.autodesk.com>



Very  
large  
meshes



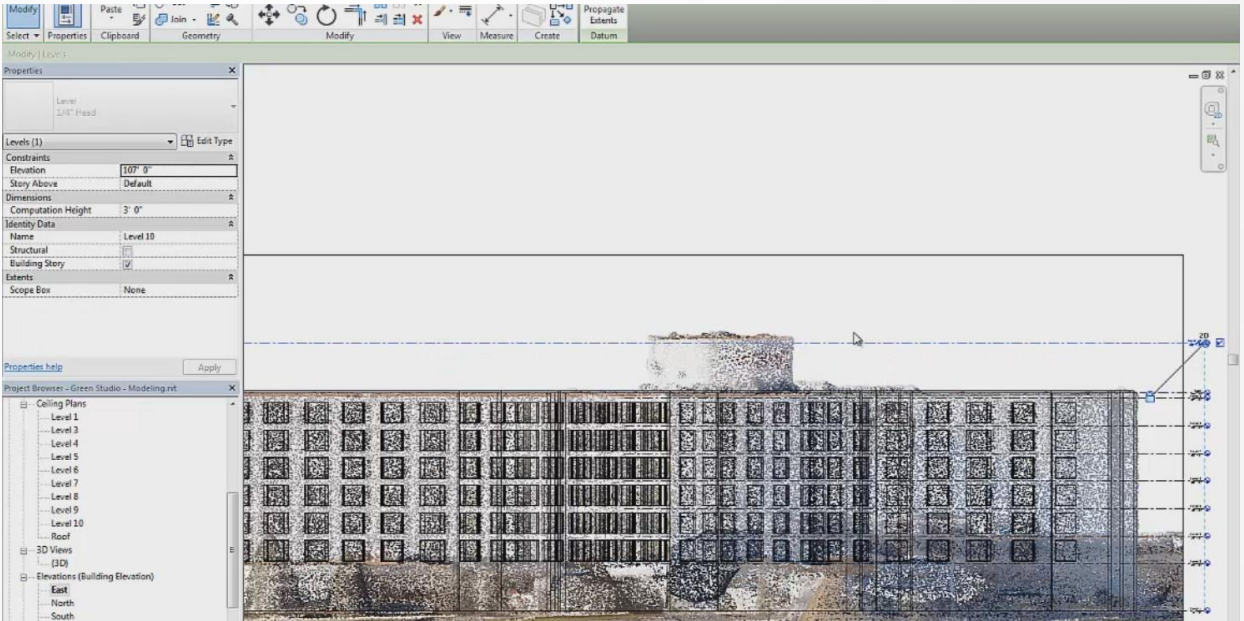
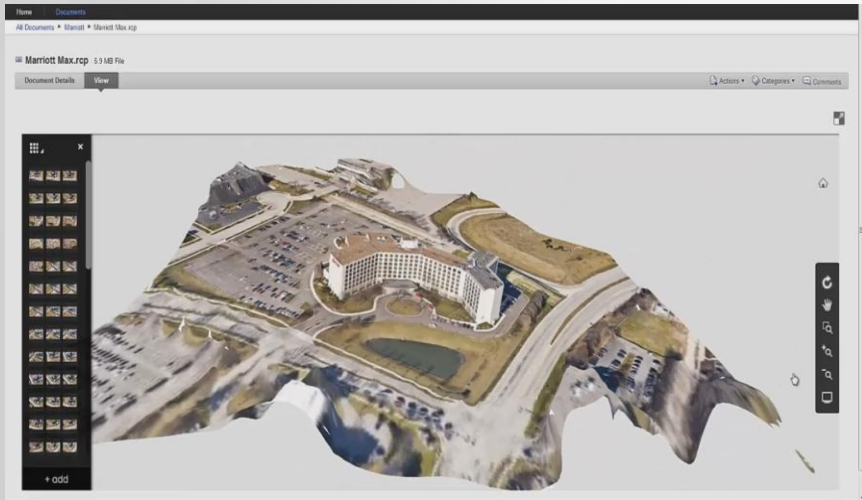
**Project Memento**



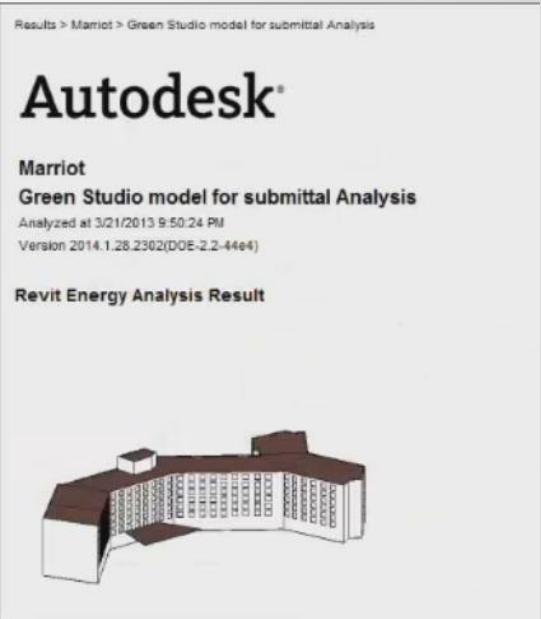
# Autodesk® ReCap™ Industry Workflows

## Rapid Energy Modeling

### Autodesk® ReCap 360 Photo



### Autodesk® Green Building Studio

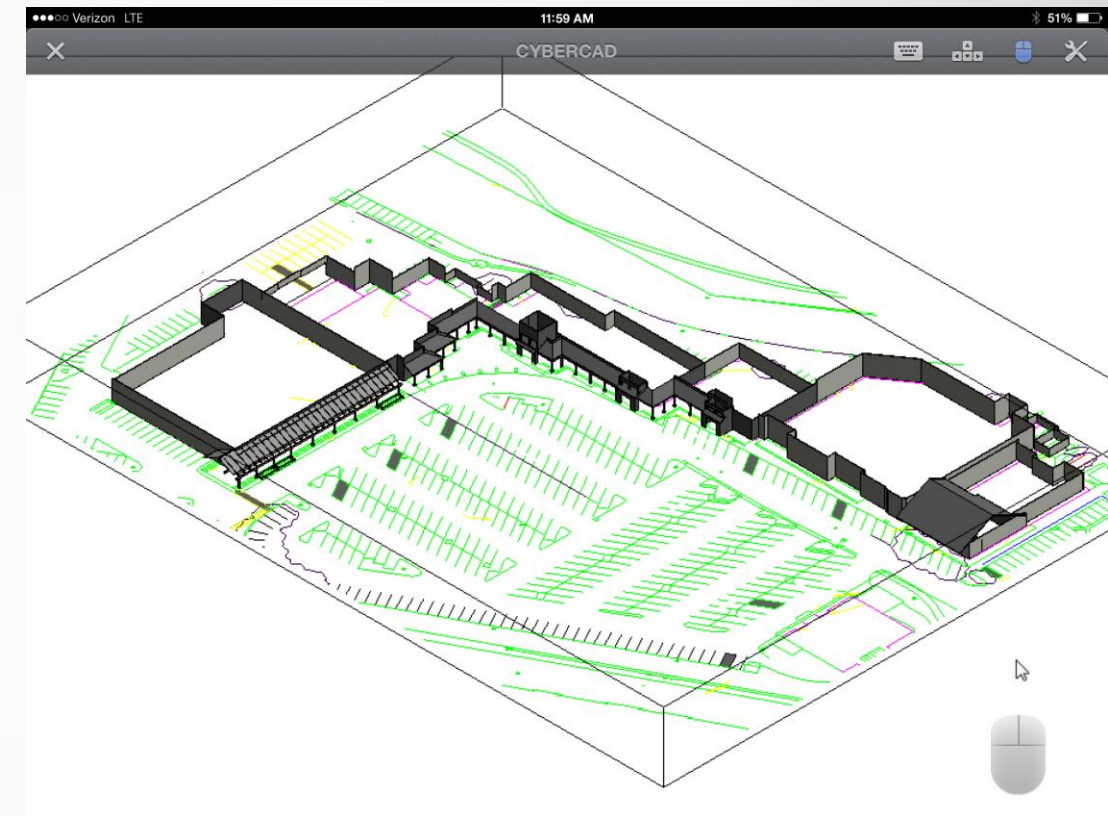


Courtesy of Janko Group and Tigerhill Studio





# From GoPro images to a Revit Model



*Courtesy of*



**Perkowitz + Ruth**  
ARCHITECTS

# Towards a Bigger Picture

range sensors

laser scanning

scan to BIM

feature recognition

point survey

photogrammetry

mesh healing

hybrid modeling

survey control

augmented reality

measurement

time delta analysis

machine controlled grading

3d printing

reverse engineering

metrology



# Reality Computing

#RealityComputing

Capture

Manipulation

Realization

Analysis

range sensors

laser scanning

scan to BIM

feature recognition

point survey

photogrammetry

hybrid modeling

mesh healing

survey control

measurement

time delta analysis

machine controlled grading

reverse engineering

metrology

augmented reality

3d printing

# Reality Computing

#RealityComputing

(post on AU 2013 mobile app!)

rick.rundell@autodesk.com  
@rcklr



