

# CM1910 - Who Needs a BIM Manager?

Paul Morrison

Technical Director  
PROCAD Consultants

Twitter: [@procad\\_bim](https://twitter.com/procad_bim)

Eric Bernier

President  
Zenit Consultants



# Welcome to the course

This is a 90 minute lecture



Please put cellphones and mobile devices to silent mode



Please save questions for the end.



Please fill out your surveys.



# ***DISCLAIMER***

***This all comes from personal and professional experience***

***This is a BIM management course.  
our concepts are based on REVIT workflows***

***BIM  $\neq$  REVIT***

***No smoke and mirrors***

***Different companies may require different strategies***

***Different projects and deliverables may require different strategies***

# QUESTIONS

How many of you use Revit now? Starting soon?

What version did you start with Revit?

Who here is currently a BIM manager? Volunteer? Volun-told?

How many of you have a BIM protocol? BEP? BDP?

What field do you represent? Arch? MEP? Manufacturing? Structure?





# Bim Manager

## Recovering CAD manager

### XYZ Company

Montreal, Canada Area | Architecture & Planning

Current **PRESTIGE Consultants, Inc.**  
Previous **PRESTIGE Consultants, Inc.** Independent Architecture and Urban Design Consultant, **Compartelle & Associates**  
Education **University of Montreal**

Send a message

1st

500+ connections

us.bimmanager.com/bimmanager

Contact Info

### Activity

Viggo Hultén is now connected to Vincent Stouthamer, President & CEO at SDA America Inc.

1 day ago

Viggo Hultén is now connected to Charles Hultén, architect at HEDMAN architecture, Marie-Anne Stouthamer, Distributeur-Importateur en produits chez V&M Medical Group, and 1 other person.

2 days ago

See More

### People You May Know



**Russell Bell** Sr.  
Owner / President **Sampro**  
Connect - 10 - 10

### ADS YOU MAY BE INTERESTED IN

-  **Are You a Director?**  
Apply to Worldwide Affairs and expand your online networking.
-  **Are You a Software Exec?**  
Get Full Visibility & Insights on Your Paper Free Deploy & the Future.
- Big Data Developers Here**  
Big Data Development & Analysis. Hadoop, Cassandra, MongoDB, etc.

### People Also Viewed

 **Martha Sanchez, MBA**  
Higher Strategy and Social Media (2011)



**Martha Davidson, MSW**

Project Director and Social Worker at  
COPPEL



**Paul Morrison ACE**

Technical Director and  
ATC manager  
PROCAD CONSULTANTS

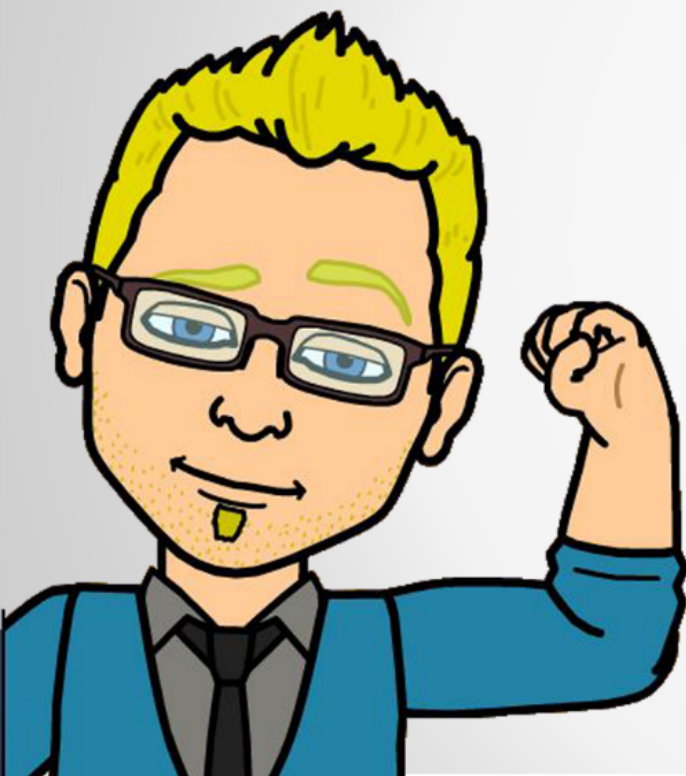


**John Paul Belmont**

Executive Director of the  
COUNCIL FOR THE  
FUTURE



**John Paul Belmont**



**Paul Morrison ACI, ACE**  
**ATC Manager**  
**Technical and training Director at PROCAD Consultants**  
**Montreal, Canada**

- Architectural Technician
- 8+ years of experience in the AEC industry.
- 6 years of BIM management experience
- been an Autodesk Certified Instructor (ACI) for almost 3 years
- Autodesk Certified Evaluator (ACE)
- Autodesk Autocad Certified Professional
- Autodesk Revit Architecture Certified Professional
- attended Autodesk University since 2009
- personally implemented over 70 offices from CAD to Autodesk Revit in a Bilingual environment.

Responsible for  
Consultation, Training, Technical support, and BIM Integration services.  
Implementation, Project setup, On site Coaching, and BIM management

Hobbies  
Automotive and Motorcycle enthusiast, photography, Video Editing, Guitar



**Matthew Duffin**

President, BIM Strategist  
Zenit Consultants



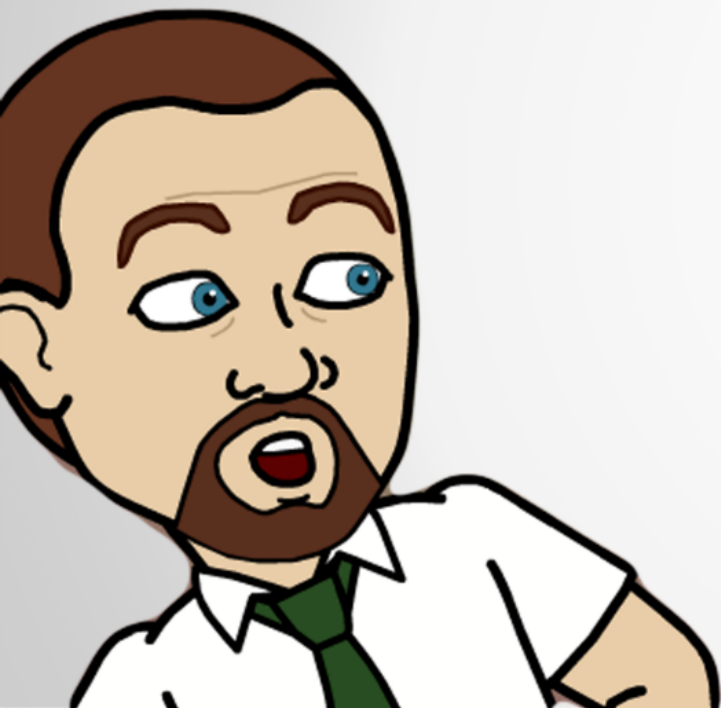
**Eric Bernier ACI**

President, BIM Strategist  
Zenit Consultants



**Matthew Duffin**

President, BIM Strategist  
Zenit Consultants



**Eric Bernier ACI**  
**President Zenit Consultants**  
**BIM Strategist**  
**Montreal, Canada**

- Architectural Technologist since 1997
- Project manager at McGill University
- Has Implemented and work with Revit in many Architectural and Engineering firms in Québec
- Revit user since 2002 and Official Autodesk Trainer since 2007
- Revit Implementation expert (2008 in Waltham, MA)
- Revit Instructor for L'Université du Québec à Montréal (UQAM)
- Autodesk Certified Instructor (2012)
- BIM User-group Co-President (250 members)
- BIM Manager of a 1.4M sqft Hospital project
- President of Zenit Consultants, 4 employees (BIM managers)

Responsible for  
Consultation, Training, Technical support, and BIM Integration services.  
Implementation, Project setup, On site Coaching, and BIM management

Hobbies  
Harley enthusiast, Owner of Martial Arts School, B Belt JiuJitsu, Kobudo




## Course Description

*This BIM management class is designed for CAD and BIM managers, project managers, and other technical and management professionals who want to obtain the relevant knowledge and skills that are required to set up a company BIM deployment plan and BIM project execution plan and protocol. We explore everything from making the transition from CAD to BIM to defining roles and structuring teams. We also touch on common issues that arise in all BIM projects and show how crucial it is to have someone there to take care of them.*

## OBJECTIVES

- Explain the true role of a BIM manager
- Describe BIM processes and explain the benefits
- Describe issues associated with starting a BIM project
- Use knowledge and skills to create a company BIM deployment plan and BIM project execution plan

The Audience level of expertise for this lecture is intermediate, which by definition means

<sup>1</sup>in·ter·me·di·ate  *adjective* \,in-tər-'mē-dē-ət\  
: occurring in the middle of a process or series

: relating to or having the knowledge or skill of someone

who is more advanced than a beginner but not yet an expert





# Bim Manager

## Recovering CAD manager XYZ Company

Montreal, Canada Area | Architecture

Current

Previous

Education

Send a message







***CAD transition***



***BIM transition***



# Explaining the True Role of a BIM Manager

## *Common responsibilities overlooked or ignored when Implementing BIM*

- Management and mastery of BIM tools
- Plan and Oversee product version migrations of BIM tools
- Evaluate New BIM Technology and software for future integration considerations
- Decisions concerning BIM technologies and IT infrastructure.
- Develop, Implement, apply and document a set of BIM standards
- Creation, configuration, and maintenance of company libraries
- Plotter support
- Support for electronic file creation such as PDF, DWF, IFC, DWG, DXF, FBX, STL
- Setting up the project structure.
- Data exchange formats
- Create and manage a BIM committee
- Document workflows
- Assigning Responsibilities/limits
- Evaluate modeling Strategies for Family, project, and conceptual levels
- Monitor personnel competence
- Communicate with Autodesk and Resellers
- Internal and continuing training
- Orientation for new employees
- Research and development
- Coordination and clash detection
- Networking and participation in user groups



# BIM Process and benefits

*“The first rule of any technology used in a business is that automation applied to an efficient operation will magnify the efficiency. The second is that automation applied to an inefficient operation will magnify the inefficiency.”*

...Bill Gates

Autodesk Revit = Automation





## How it should work.....

### 3D

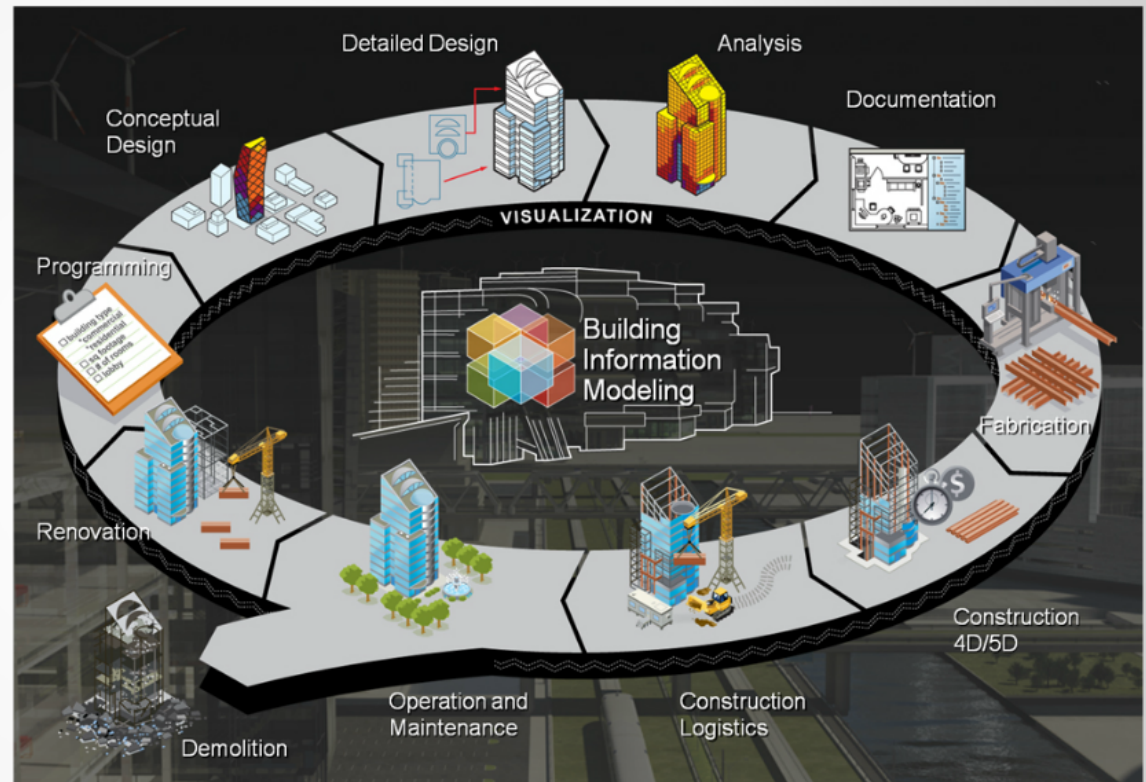
- Plans, sections, elevations, Modeling, and visualization

### 4D Time

- Phases
- Schedules
- Life cycle up to demolition

### 5D Cost

## What actually gets done?



## How it should work..... What actually gets done?

STEPS	SHOULD	ACTUALLY
Programming	<ul style="list-style-type: none"><li>• Kick off</li><li>• BEP</li></ul>	<ul style="list-style-type: none"><li>• No meetings</li><li>• No BEP</li></ul>
Conceptual	<ul style="list-style-type: none"><li>• Vasari</li><li>• Sketch up</li></ul>	<ul style="list-style-type: none"><li>• Revit</li><li>• Fast track</li></ul>
Detailed Design	<ul style="list-style-type: none"><li>• Revit</li></ul>	<ul style="list-style-type: none"><li>• Revit</li></ul>
Analysis	<ul style="list-style-type: none"><li>• Studies, Leed</li></ul>	<ul style="list-style-type: none"><li>• Analysis?</li></ul>
Documentation	<ul style="list-style-type: none"><li>• keynotes, DB</li></ul>	<ul style="list-style-type: none"><li>• Text, CAD</li></ul>
Fabrication	<ul style="list-style-type: none"><li>• Manufacturer</li></ul>	<ul style="list-style-type: none"><li>• Fabrication?</li></ul>





How it should work.....

What actually gets done?

## STEPS

4D/5D

Logistics

Maintenance

Renovation

## SHOULD

- Navisworks
- MS project
- Handover
- Continuation

## ACTUALLY

- Addendums
- Project manager
- CAD
- Business as usual



## Where BIM is not a good fit?

- Fast track projects

Prefabrication : Difficult or Impossible  
Analysis is not usually possible  
Clash detection is limited





## Bim Manager

### Recovering CAD manager

#### XYZ Company

Montreal, Canada Area | Architecture & Planning

Current **PROCAD Consultants, Inc.**  
Previous **PROCAD Consultants, Independent Architecture and Urban design consultant, Campanella & Associates**  
Education **Université de Montréal**

Send a message

500+  
connections

us.bimmanager.com/xyzcompany

Contact Info

### Activity

Vijayar Muthu is now connected to Vincent Bouillon, President & CEO at BDA America Inc.

1 day ago

Vijayar Muthu is now connected to David Fuchs, architect at INTERIM architecture, Marie-Françoise Desrosiers, DataScienceHub.com is a prototype of a V&B Medical Group, and 1 other person.

2 days ago

See More

### Background



#### Summary

You just need my title and thought: "Wow, we have a small army of our firm doing all that you do, you must be Superman!" Actually no, but I work my butt off at an incredible firm based in Montreal, Canada and we are currently looking for new team members to join our team. We are currently looking for new team members to join our team. We are currently looking for new team members to join our team.

### People You May Know



Russell Bell

Owner / President Emeritus

Connect

### ADS YOU MAY BE INTERESTED IN



Are You a Director?

Apply to Montclair Who Who and expand your online networking.



Are You a Software Exec?

Get that visibility & insights into Your App! Free Deploy & Free Trial!

Big Data Development News

Big Data Development & Analysis, Hadoop, Cassandra, MongoDB, etc.

### People Also Viewed



Martha Sanchez, MBA

High Strategy and Social Media at USMTL



Paul Morrison ACE

Technical Director and  
ATC manager  
PROCAD CONSULTANTS



Jean-Paul Beliveau

Director / General of PROCAD CONSULTANTS



Aris L. Pajon

Director / General of Pharmacology &

Most endorsed for...

18 Issues +

18 Associated +

15 with starting +

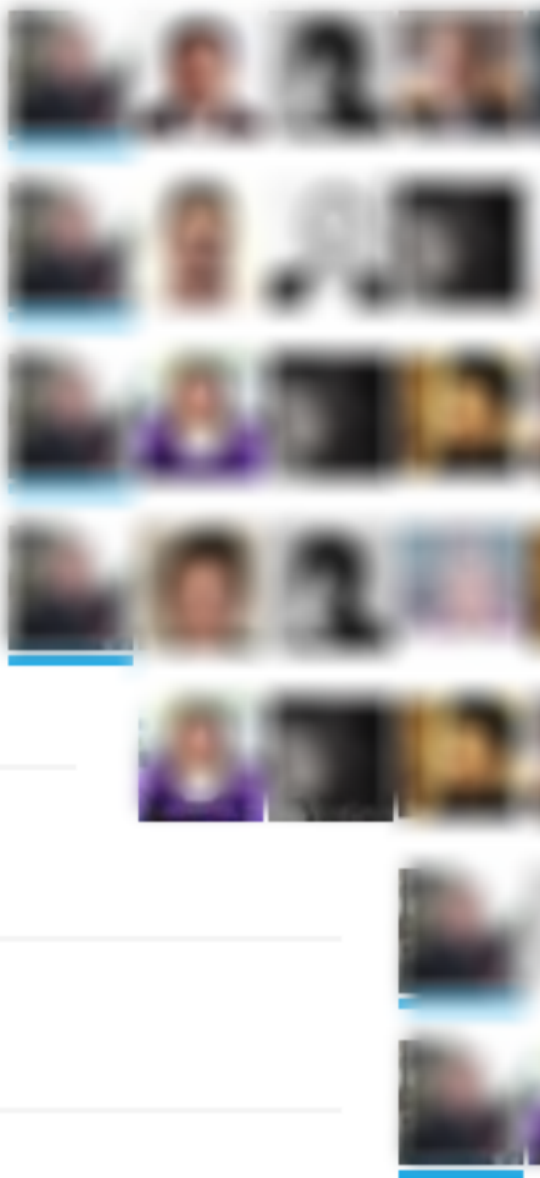
13 a +

11 BIM project +

9 +

9 +

6 +



Describe issues associated with starting a BIM project.

✓ Owners on board

✓ Training

Describe issues associated with starting a BIM project.



## ***Team selection***

- ***Project Manager***
- ***BIM Director***
- ***BIM Manager***
- ***BIM champion***
- ***Content creator***
- ***Room coordinator***
- ***Output creator***
- ***General Users***

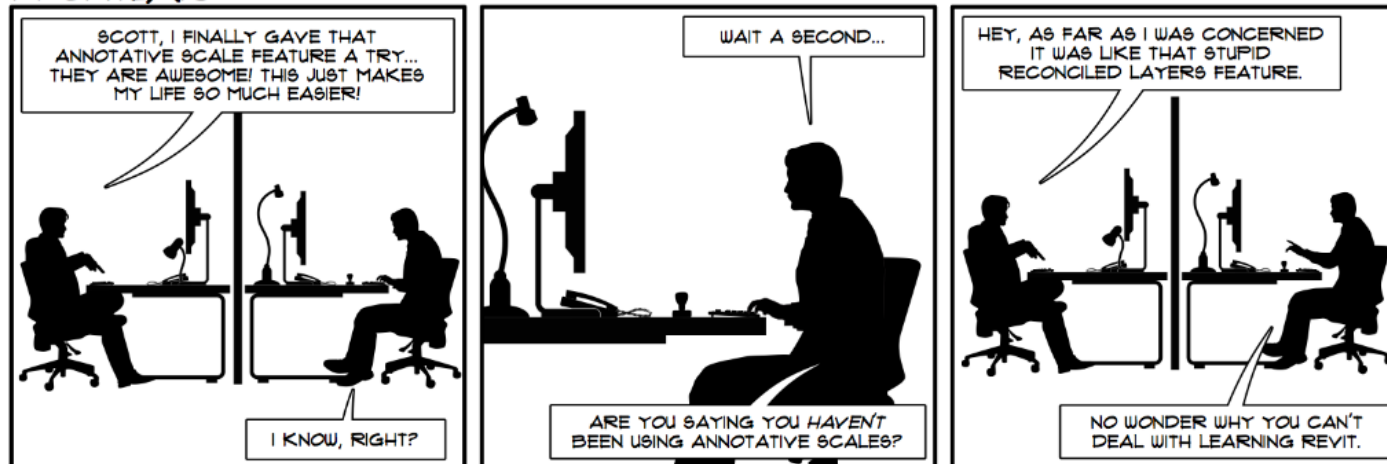


Describe issues associated with starting a BIM project.



## *Resisting change*

ARCHITEXTS



© 2013 ARCHITEXTS.US ALL RIGHTS RESERVED



Describe issues associated with starting a BIM project.



## ***IT considerations***

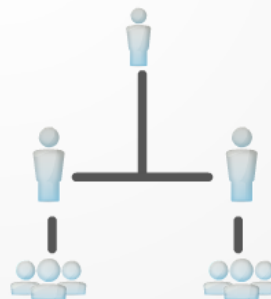
- ***User stations***
  - ***Network infrastructure***
    - ***Servers***
      - ***Support***



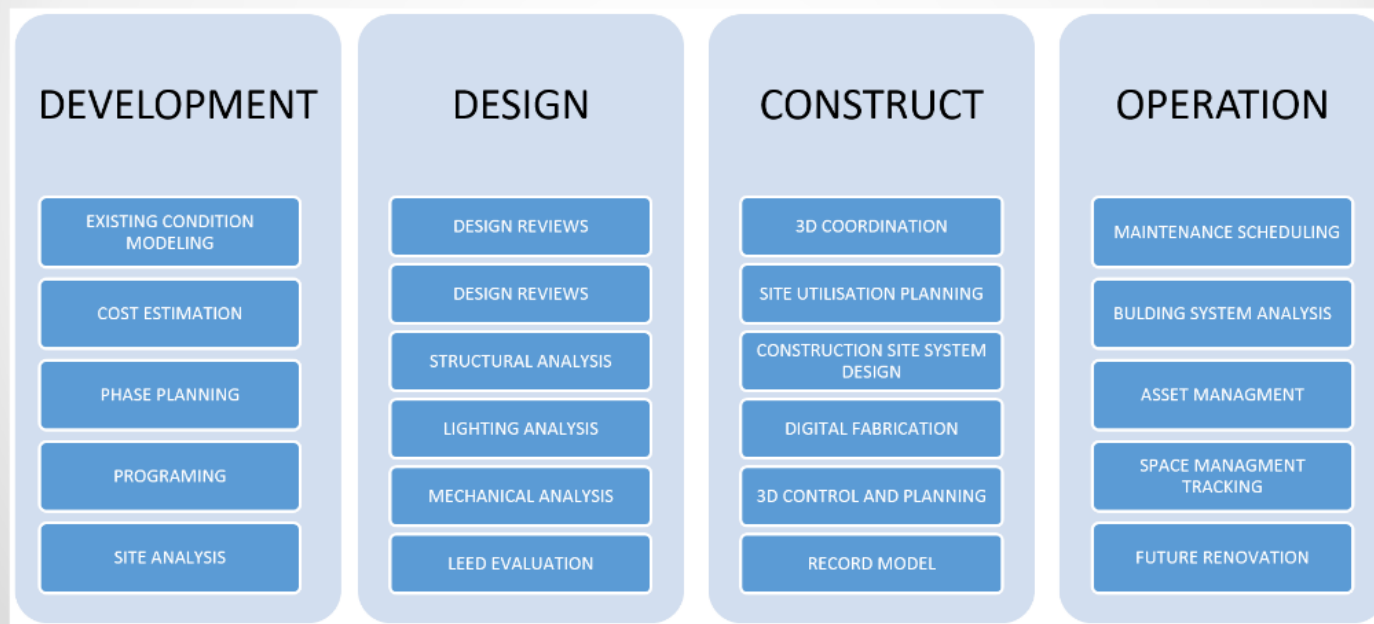
Describe issues associated with starting a BIM project.



## *Implementation*



Describe issues associated with starting a BIM project.



Describe issues associated with starting a BIM project.



***Kickoff meeting***



***BIM Committee***

Describe issues associated with starting a BIM project.



## ***Leap of faith***

**THE TRAINING** *All members should rely on the Best practices and skills learned in training.*

**THE TOOLS** *You have that great template and amazing families ready.*

**THE PEOPLE** *you have chosen the dream team, everyone has their place to shine*

**THE PLAN.** *Your BEP, and BDP are the road map. Destination success And in the odd occasion you hit a detour don't be afraid to contact and Leverage support from resellers and consultants if required.*

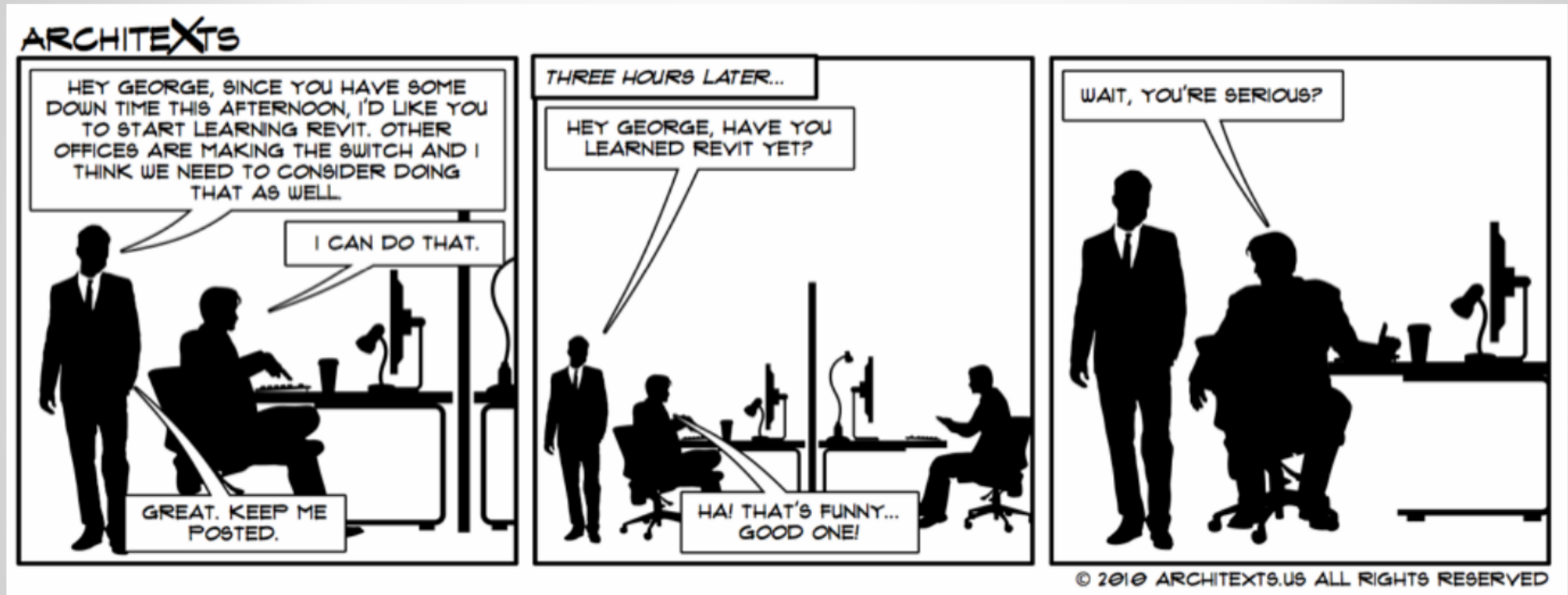


# BIM Deployment and Execution plan

*“The general who wins the battle makes many calculations in his temple before the battle is fought. The general who loses makes but few calculations beforehand”*

... Sun Tzu

# BIM Deployment and Execution plan



# What is a BIM Deployment plan?

## Steps:

- Find a project.
- Size of the army
- Choose the right people
- Existing CAD Standards to Revit Standards
- Training
- Revit standard manual

## Revit Standard Manual :

- Organisation chart, Flow charts...
- Naming conventions
- Texts, tags, dimensions, titleblock, legends, schedules standards
- Workset, Phasing and Design options conventions
- Door and Window types
- Keynoting, Shared parameters, materials...



# What is a BIM Execution plan?

## **Definition :**

The BEP is a detailed plan that allows us to define the way that the project will be executed and controlled having BIM in mind. It establishes modeling standards, common strategies and leads us to achieve our BIM goals defined by all professionals in the project.

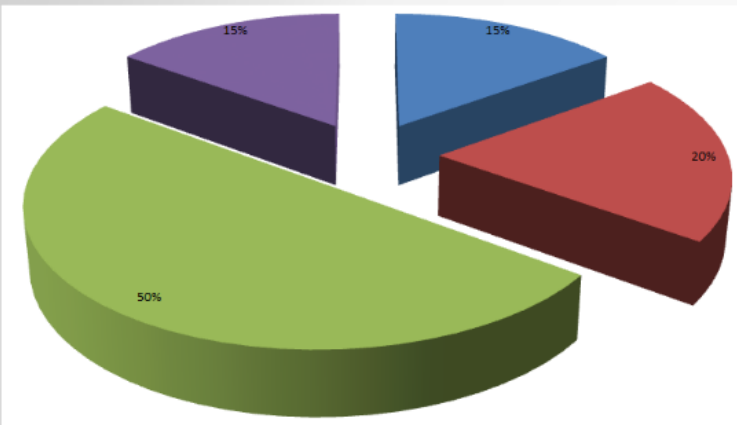


# What is a BIM Execution plan?

Project specific; this is a document containing strategies, standards and collaboration solutions for every consultants using BIM on the project.



# 4 Different sections



Source : Contech BIM Projects 2013,Qc

- What? : Project objectives and Goals
- Who? : The key players on the project
- How? : Strategies
- Which Tools? : Computers and Softwares

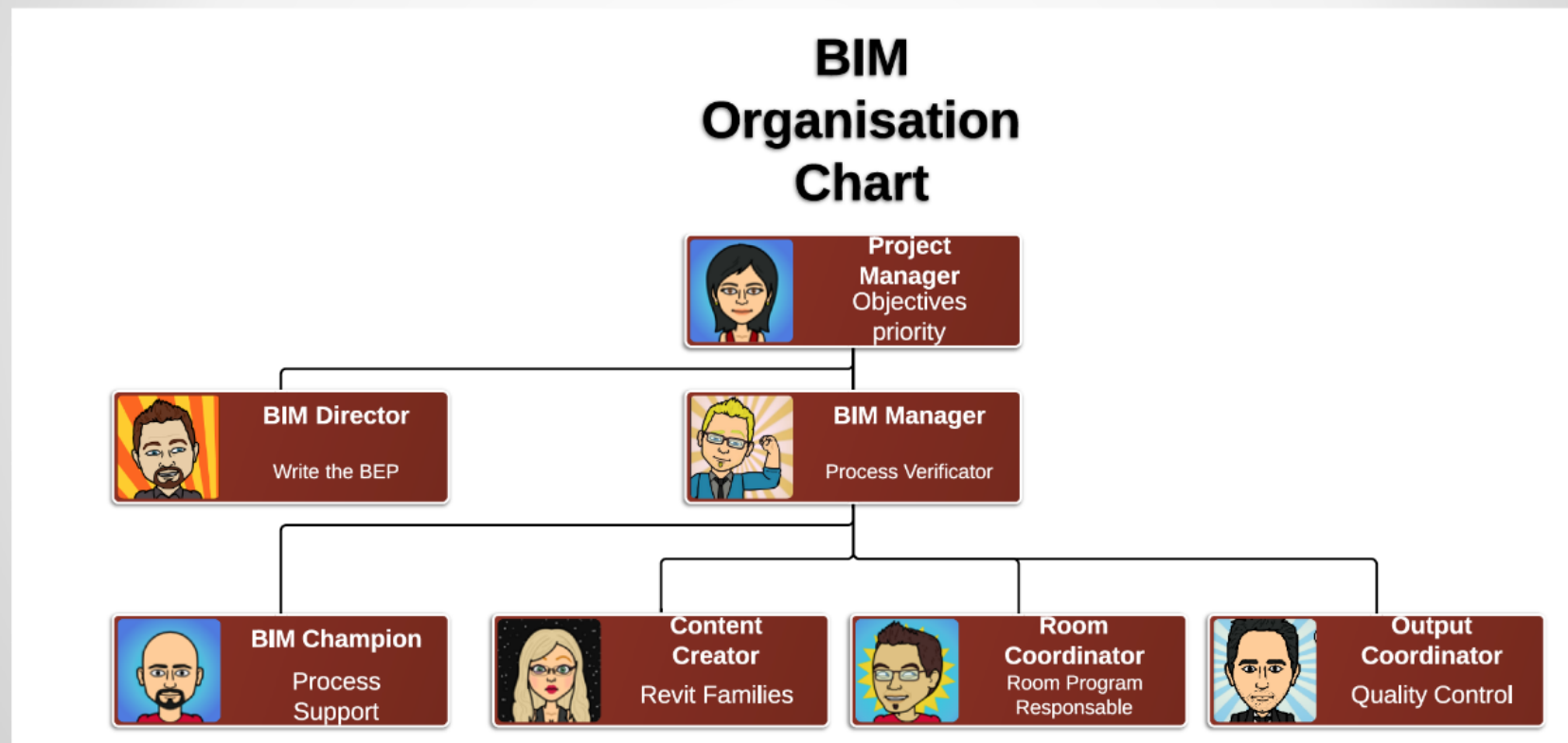
# What ?

- Project Description
- BIM Objectives
- Deliverables
- Schedule

Phase	Objectives	ARC	STR	MEC	ELE	PLB
3D Modeling	Use Revit to generate all 2d deliverables.	<input checked="" type="checkbox"/>	<input checked="" type="checkbox"/>	<input checked="" type="checkbox"/>	<input checked="" type="checkbox"/>	<input checked="" type="checkbox"/>
	Use Revit to produce all automatic material schedules.	<input type="checkbox"/>	<input type="checkbox"/>	<input type="checkbox"/>	<input type="checkbox"/>	<input type="checkbox"/>
	Incorporate 3D views in the 2D deliverables.	<input checked="" type="checkbox"/>	<input checked="" type="checkbox"/>	<input checked="" type="checkbox"/>	<input checked="" type="checkbox"/>	<input checked="" type="checkbox"/>
3D Annotation	Use Design Review for internal coordination between Engineers and Architects.	<input type="checkbox"/>	<input type="checkbox"/>	<input type="checkbox"/>	<input type="checkbox"/>	<input type="checkbox"/>
	Use DWF as a unique format.	<input type="checkbox"/>	<input type="checkbox"/>	<input type="checkbox"/>	<input type="checkbox"/>	<input type="checkbox"/>
	Use Revit for clash detection for same discipline.	<input checked="" type="checkbox"/>	<input checked="" type="checkbox"/>	<input checked="" type="checkbox"/>	<input checked="" type="checkbox"/>	<input checked="" type="checkbox"/>
	Use Revit for clash detection between discipline.	<input checked="" type="checkbox"/>	<input checked="" type="checkbox"/>	<input checked="" type="checkbox"/>	<input checked="" type="checkbox"/>	<input checked="" type="checkbox"/>
4D Sequences	Phases are linked to calendar and visualise sequence in Navisworks.	<input type="checkbox"/>	<input type="checkbox"/>	<input type="checkbox"/>	<input type="checkbox"/>	<input type="checkbox"/>
	Use Phases simulation to analyse different options.	<input type="checkbox"/>	<input type="checkbox"/>	<input type="checkbox"/>	<input type="checkbox"/>	<input type="checkbox"/>
5D Cost	Put a cost on all construction elements in Revit to generate cost estimations.	<input type="checkbox"/>	<input type="checkbox"/>	<input type="checkbox"/>	<input type="checkbox"/>	<input type="checkbox"/>
6D Maintenance	Use Revit models to support operations and maintenance activities.	<input type="checkbox"/>	<input type="checkbox"/>	<input type="checkbox"/>	<input type="checkbox"/>	<input type="checkbox"/>

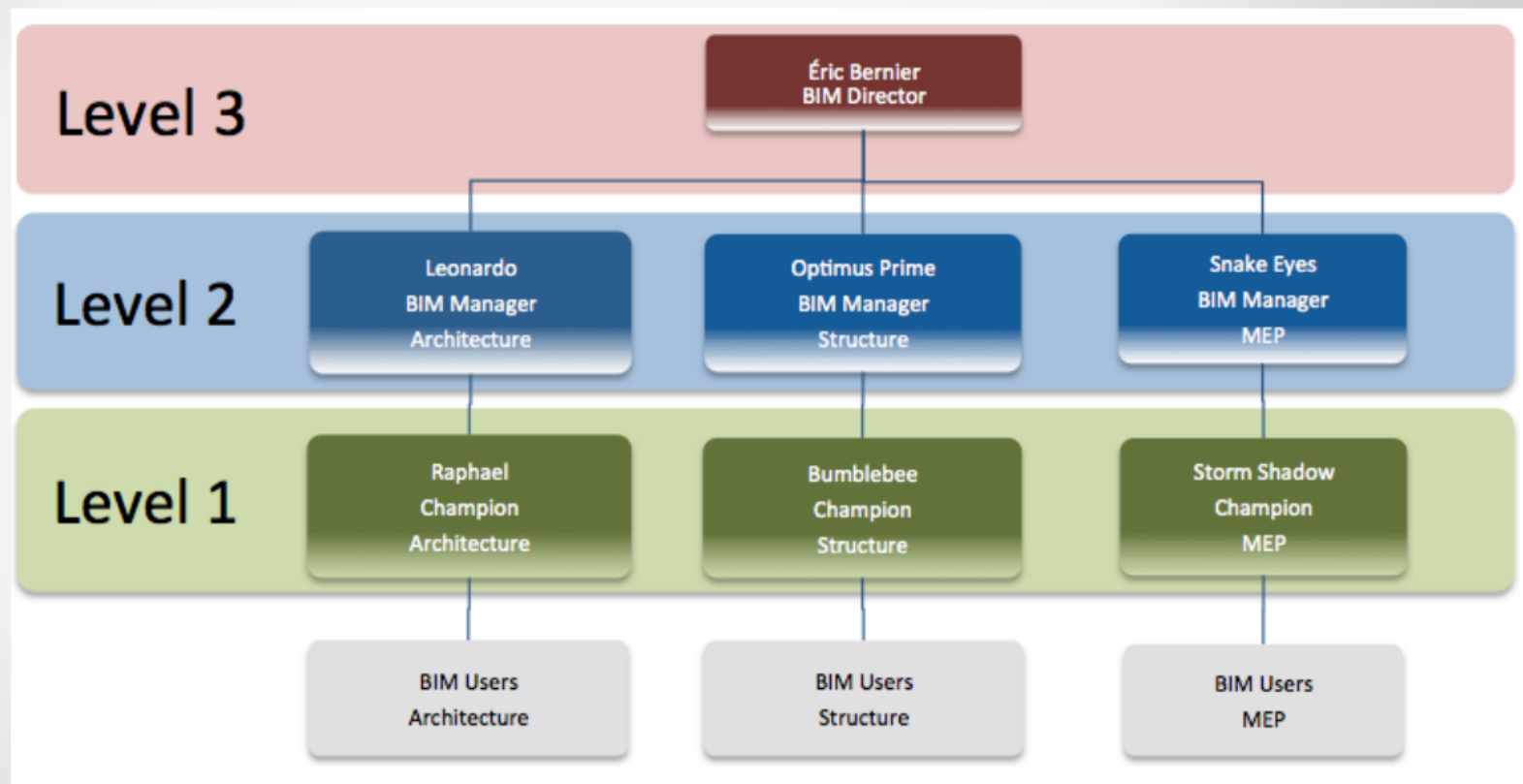
# Who?

Roles and responsibilities.  
BIM Organisation Chart



# Who?

Support levels



# How?

## Modeling Strategies

- Where to split the model
- Linking Strategies
- Data organisation
- Access rights
- Files
- Parameters
- Best Practice



# How?

## Collaboration Strategies

- Naming conventions
- Worksets
- Grids , Levels and Grids
- Sheet numbering
- BIM Meeting Schedules

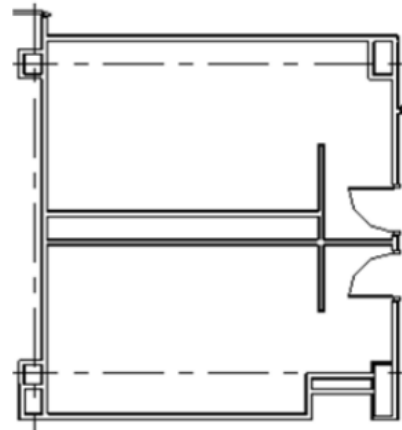




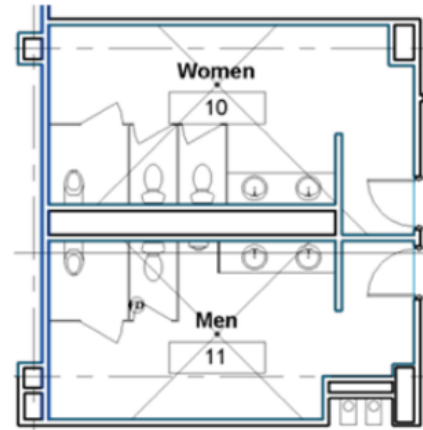
# How?

## Visualization Strategies

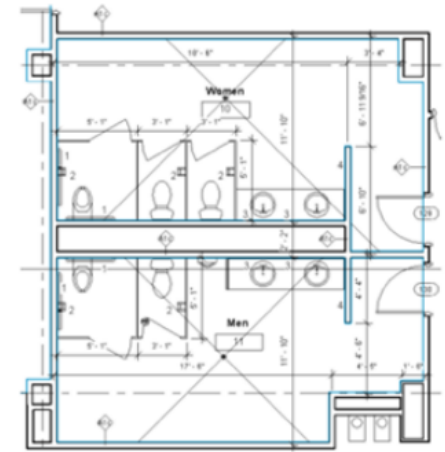
- View Templates
- Title blocks
- LOD



Level 100 Floor Plan



Level 200 Floor Plan



Level 300 Floor Plan

# Which tools?

- Hardware
- RAM
- CPU Speed
- Cores
- Softwares
- Plugins
- Enhancements
- Network

Model / Processor	Dell Precision T7500 Six Core Intel Xeon X5690 3.46GHz,12M L3,6.4GT/s
OS	Windows 8 Professional w/64-Bit media French
RAM	48Gb 1333MHz DDR3 SDRAM ECC 6X8GB
Discs	256GB Solid State Drive (SSD)
DVD	16XDVD/Rom w/ CyberLink PowerDVD
Video Card	NVIDIA Quadro 4000 2Gb w/ Dual Monitor



# Which tools?

## Revit Resources Matrix

Revit Ressources Schedule				Updated : December 3rd													
TEAMS	<div><div><div></div><div>Expert</div></div><div><div></div><div>Acquired</div></div><div><div>R</div><div>Refresh Required</div></div><div><div>PM</div><div>Project Manager course</div></div><div><div></div><div>To Acquire</div></div></div>			Projets	<div>Families</div> <div>BasicBasicAdvancedPhasesDesign OptionsWorksetDetailsMassingRoof and StructureSiteSchedulesVersion</div>												
	Bold : BIM Comity rep		Position														
BLUE	Éric Bernier	BIM Project Manager	Hospital, Shool														2014
	Leonardo DaVinci	Architect, Artist, Engineer,	Hospital														2014
	James Anderson	Architect	Hospital	R												R	2014
	Arthur Waite	Arch Tech	Hospital														2014
	Rudy Kipling	Arch Tech	Hospital													R	2014
	Georges Marshal	Arch Tech	Hospital														2014
	James Wolfe	Architect	Hospital	R												R	2014
	Elizabeth Conway	Arch Tech	Hospital														2014
	Dannielle Dewall	Arch Tech	Hospital														2014
	Kiana Bernier	Interior Designer	Hospital														2014
	Kim Chan	Architect	Hospital														2014
	Louis Seagram	Architect	Hospital														2014
GREEN	Michelangelo	Architect, Artist, Engineer,	School														2014
	Donnatello	Architect	School	PM													2014
	Michele Ruthledge	Project Manager	School	PM													2014
	Cynthia Juarez	Tech en aménagement	School														2014
	Michael Mann	Tech en aménagement	Residential														2014
	April O'Neil	Tech en aménagement	Residential	R													2014
	Raphael	Architect	Residential														2014
DREAM	Paul Morrisson	BIM Project Manager	laboratory, Residential														2014
	Philip Coulson	Tech. Arch.	Laboratory														2014
	Melinda May	Tech. Arch. Senior	Laboratory	R													2014
	Grant Ward	Tech. Arch.	Laboratory														2014
	Leo Fitz	Tech. Arch.	Laboratory														2014
	Jemma Simmons	Tech Arch	Laboratory	R													2014
	Skye Bennet	Tech Arch	Laboratory														2014
	Maria Hill	Tech Telecom	Laboratory														2014
	Nick Fury	Office Linebacker	Laboratory														2014
																	2014



# Model review matrix

MODEL MANA												
DECEME												
PM	Project	Model	MODEL SIZE				QUALITY CONTROL					
			Current size		Size after cleaning		Warnings		Elements		Purge	
			Size (MB)	Comparison previous date	Size (MB)	Comparison after cleaning	Warnings	Comparison previous date	Number of Elements	Comparison previous date	Number of Elements to purge	Comparison previous date
Eric Bernier	Hospital	01234_Arch_Block_A	215		185	14%	413		28345		470	
		01234_Arch_Block_B	321		281	12%	401		24324		645	
		01234_Arch_Shell	75		69	8%	93		15666		151	
		01234_Site	10		10	0%	5		655		12	
	School	10154_School_Shell	60		58	3%	28		16767		200	
		10154_School_Interior	175		155	11%	46		28282		315	
		10154_School_Site	15		14	7%	46		545		15	
Paul Morrison	Laboratory	04321_Arch_RD	165		155	6%	413		33434		355	
		04321_Arch_Genome	185		135	27%	401		31876		253	
		04321_Structure	95		92		401		28787		122	
		01234_Arch_Shell	78		69	12%	93		19876		57	
		01234_Site	12		10	17%	5		456		18	
	10266	10154_House_Shell	79		62	22%	28		9876		318	
		10154_House_Interior	82		80	2%	46		22876		333	
		10154_House_Site	17		15	12%	46		323		8	

# Model issue matrix

No	Date	Model	Subject	Category	Priority	Severity	Question or problem	By	Answer or solution
Ex	2013-12-03	Shell	Ex:Walls, Rooms, Materials	Question or Problem	High, Middle, Low	Critical, Major, Minor	Ask a question or expose a problem here	Querrant	Answer here
AU-001	2013-12-03	Interior	Rooms	Problem	High	Major	Room # NCC-1701E is missing in my schedule even if I can see it on my plan	William R.	Possible reasons why it is missing : Have you checked the F

# View templates & filters

View Templates Names	Number of view using it	Wall Accessories	Elevator	Faraday partitions	Working - Section	Building Section	Sanitary	Elect & Telecom	Temporary for Coordination	Elevation - Exterior	Elevation - Interior	Elevation - all but Corridor	Faraday Windows	Wall protections	Radiant heating panels	Electrical panels	Ceiling height - 2440mm	Plumbing	Gray hidden lines	Electrical outlets	Wall guards	Fire protection OH to 3H	Electrical symbols	Ventilation	TOTAL
<b>Sections and Elevations</b>																									
Section 1-100	16																								2
Section 1-50	25																								3
Sections - Stairs	13																								3
Elevations - General	3																								0
<b>Ceilings</b>																									
Ceilings 1-50	135																								6
Ceilings 1-100	135																								6
Ceilings Coordination	16																								3
<b>PLANS</b>																									
General 1-50	135																								0
General 1-100	135																								5
Corrdination 1-100	135																								2
F1_F2_F3	16																								3
Zoom Bedrooms 1-50	16																								0
Zoom Conference 1-50	3																								12
Plans Finishes 1-50	16																								3
Plans Furniture 1-200_Stat_NivD	16																								3
Plans Fire Protection	16																								4
Plans STC	16																								1
Working Plan - Bedrooms	3																								4
Working Plan - Stairs	7																								2
Working Plans - 1-50	9																								2
Working Plan Fire Protection	9																								1
ZZ_Worksets	9																								2
<b>TOTAL</b>		2	1	2	9	2	1	5	4	1	5	1	1	2	1	12	1	3	3	0	5	1	1	4	67

# How to get there?

- **BIM Kick-off meeting**
- Origin system (Origin to Origin or shared coordinates).
- Grids and levels
- LOD
- Worksets
- Architecture and plumbing issues
- Architecture and Electricity (for Caseworks and furniture)
- Columns
- Phases
- What have to be scheduled
- Costs?
- Revisions and Printing
- Clash detection and coordination
- And so on!

# CONCLUSION



A special surprise  
for all of our  
attendees  
from our friends at  
**ARCHITEXTS**

# ARCHITEXTS

The comics featured during today's presentation  
came from Architexts, a webcomic  
about architectural professionals.

## SPECIAL DISCOUNT

VISIT: <http://architexts.us/books/au2013>

and use the code:

59SZRJC7

for a 15% discount on both

ARCHITEXTS: VOLUME 1 and  
ARCHITEXTS: VOLUME 2\*

\*CODE WILL EXPIRE DECEMBER 12, 2013



Q  
U  
E  
S  
T  
I  
O  
N  
S



Q  
U  
E  
S  
T  
I  
O  
N  
S

