

Ten Troubleshooting Topics Plant 3D and P&ID

Presenters:

Irene Radcliffe

Hung Nguyen

You and All of us!



Class summary

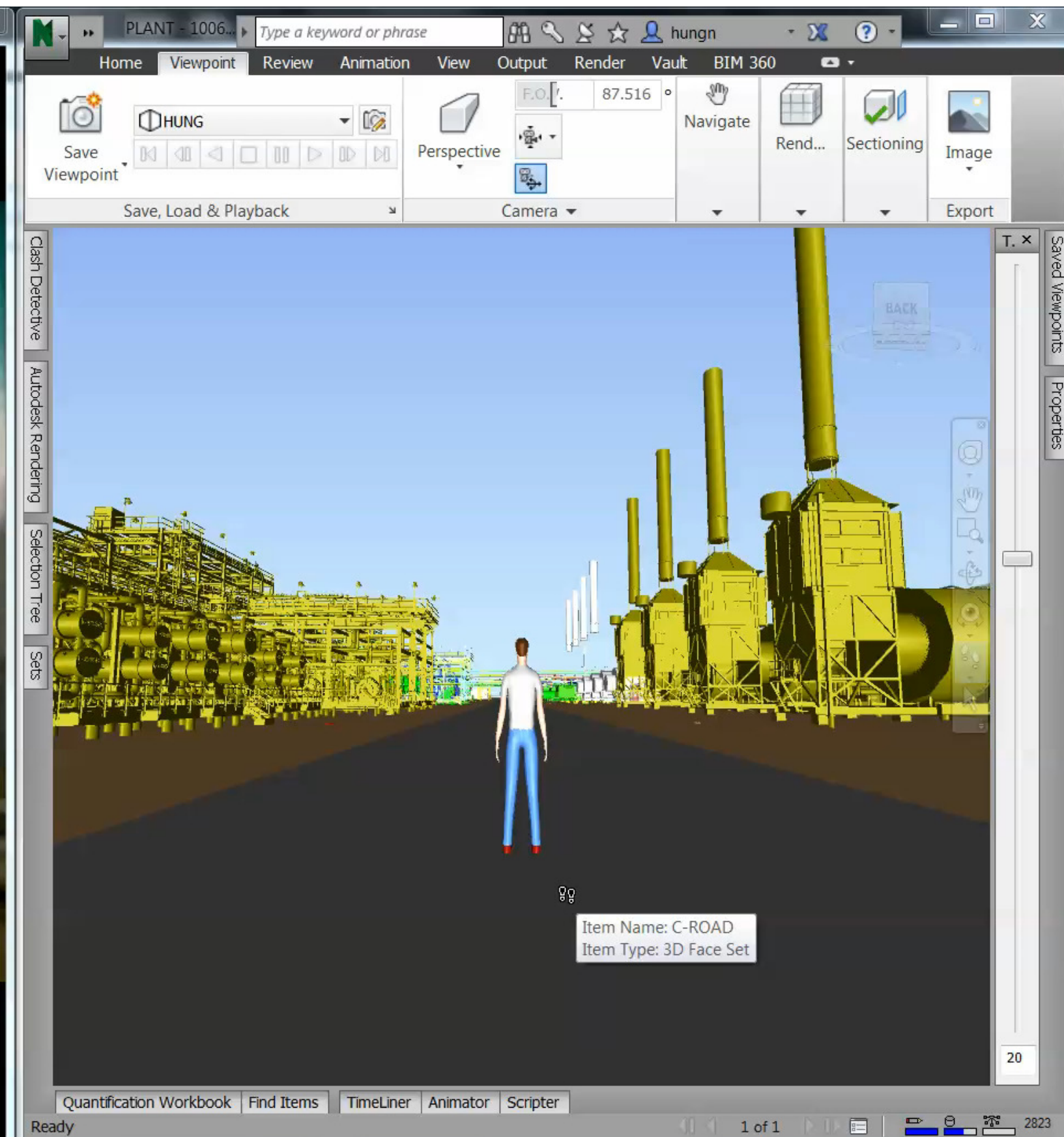
This is not a “Tips and Tricks” class, but rather a round table discussion covering the most common problems with AutoCAD Plant 3D and P&ID. During this session, we will also share with you our own troubleshooting techniques and related documents.

We also reach out to you, asking you to share your experiences with Plant 3D Troubleshooting. Your contribution to this round table discussion is the KEY to the success of this class. By having more accomplished users share their experiences, and having lesser experienced users ask questions, we hope that everyone will leave this session better equipped to solve issues quickly and effectively.

Key learning objectives

At the end of this Round table discussion, you will be able to:

- Troubleshooting most common problems with Plant3D and P&ID.
- Troubleshooting problems with Project setup and configuration, Networking issues, Vault.
- How to incorporate Inventor, Revit data and ASD drawings into an AutoCAD Plant 3D project.
- How to work with Autodesk Plant Design Suite with a better workflow.



10 most common problems with Plant 3D and P&ID

1. Project Setup and Configuration
2. Networking issues
3. Vault
4. Project cannot be accessed
5. Migration
6. Editing XML codes
7. Customer's custom parts, equipment, specs and catalogs
8. Defects or Wish list items
9. Third party programs
10. Suite workflows



1. Project Setup and Configuration

- Did you assign a Designated person to control the project setup?
- Do you have an initial development of a project template?
- Did you make Palettes read only for your user?
- Do you have a backup of all your projects?

2. Networking issues

- Have you tried to setup SQLite, SQL Express, SQL Server, Vault Projects?

<http://knowledge.autodesk.com/support/autocad-plant-3d/troubleshooting/caas/sfdcarticles/sfdcarticles/How-to-configure-Microsoft-SQL-Server-for-AutoCAD-Plant-3D-projects.html>

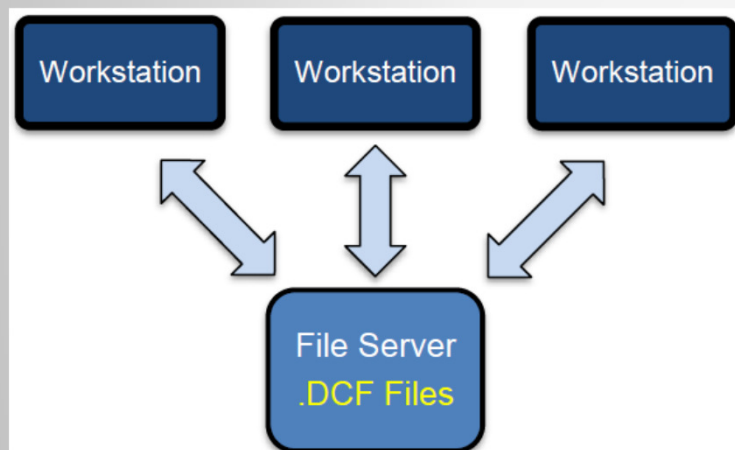


Figure 1. SQLite

This graphic shows each workstation, running its own local SQLite database engine and accessing the .DCF (database) files for the project stored on a file server.

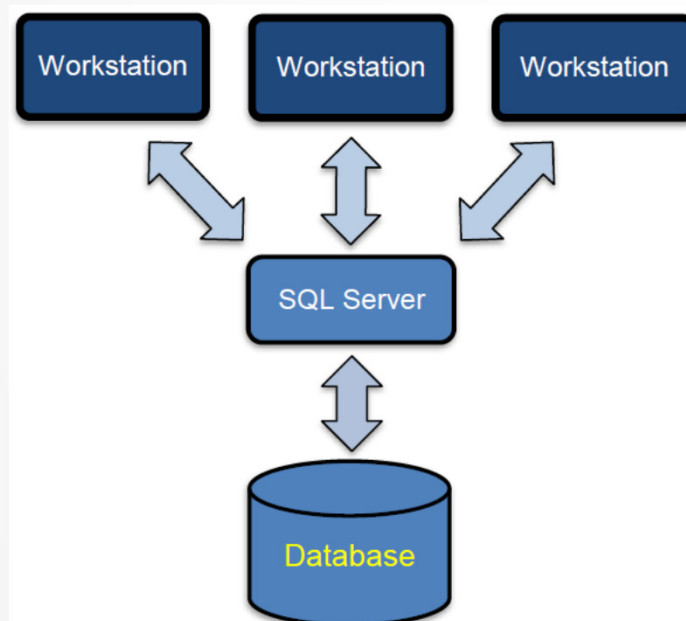
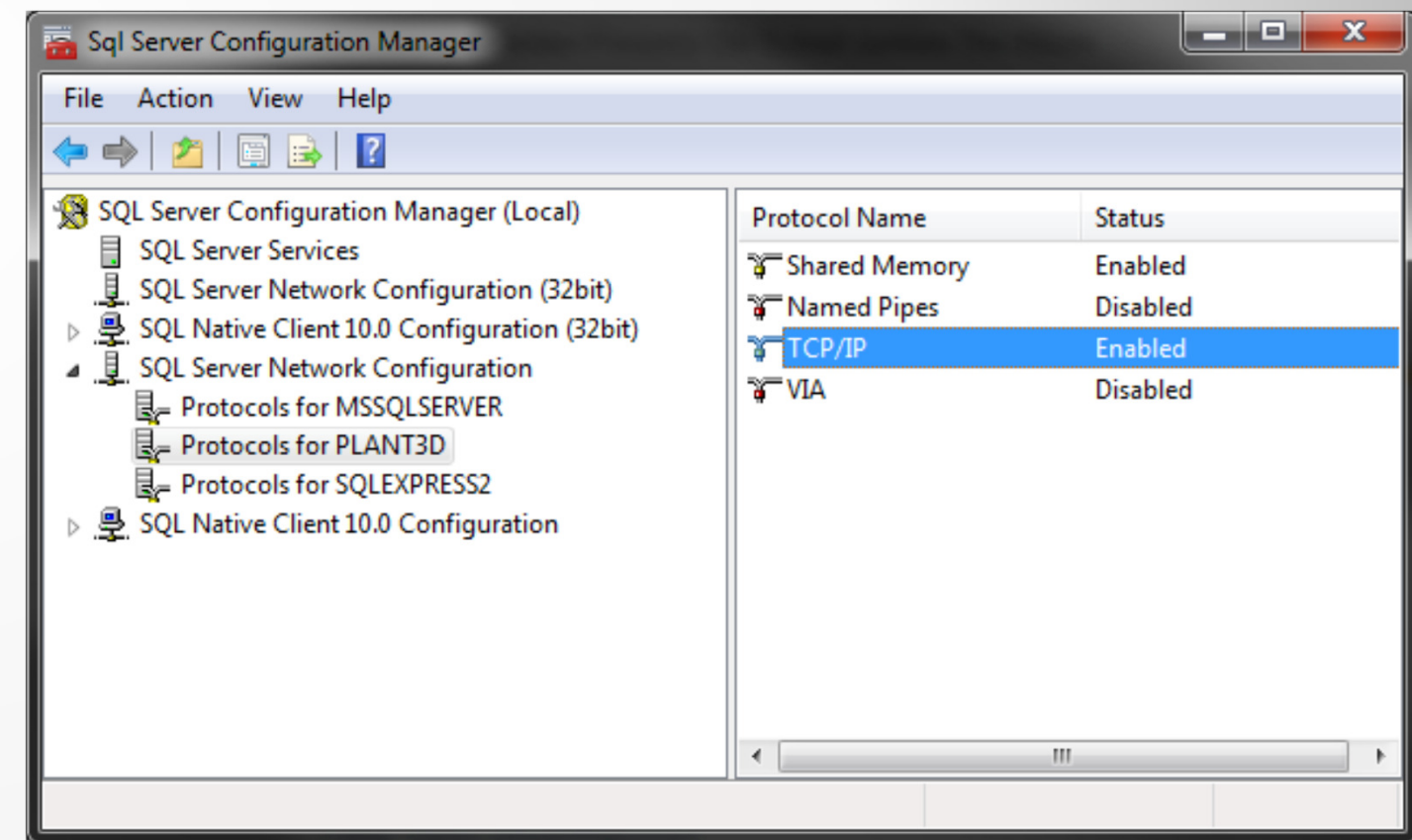
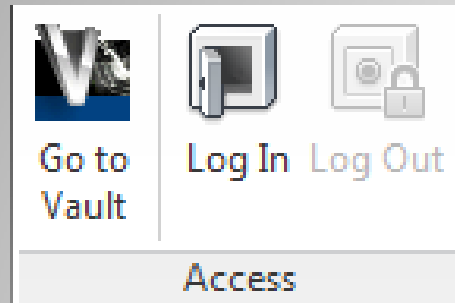


Figure 2. Microsoft SQL Server

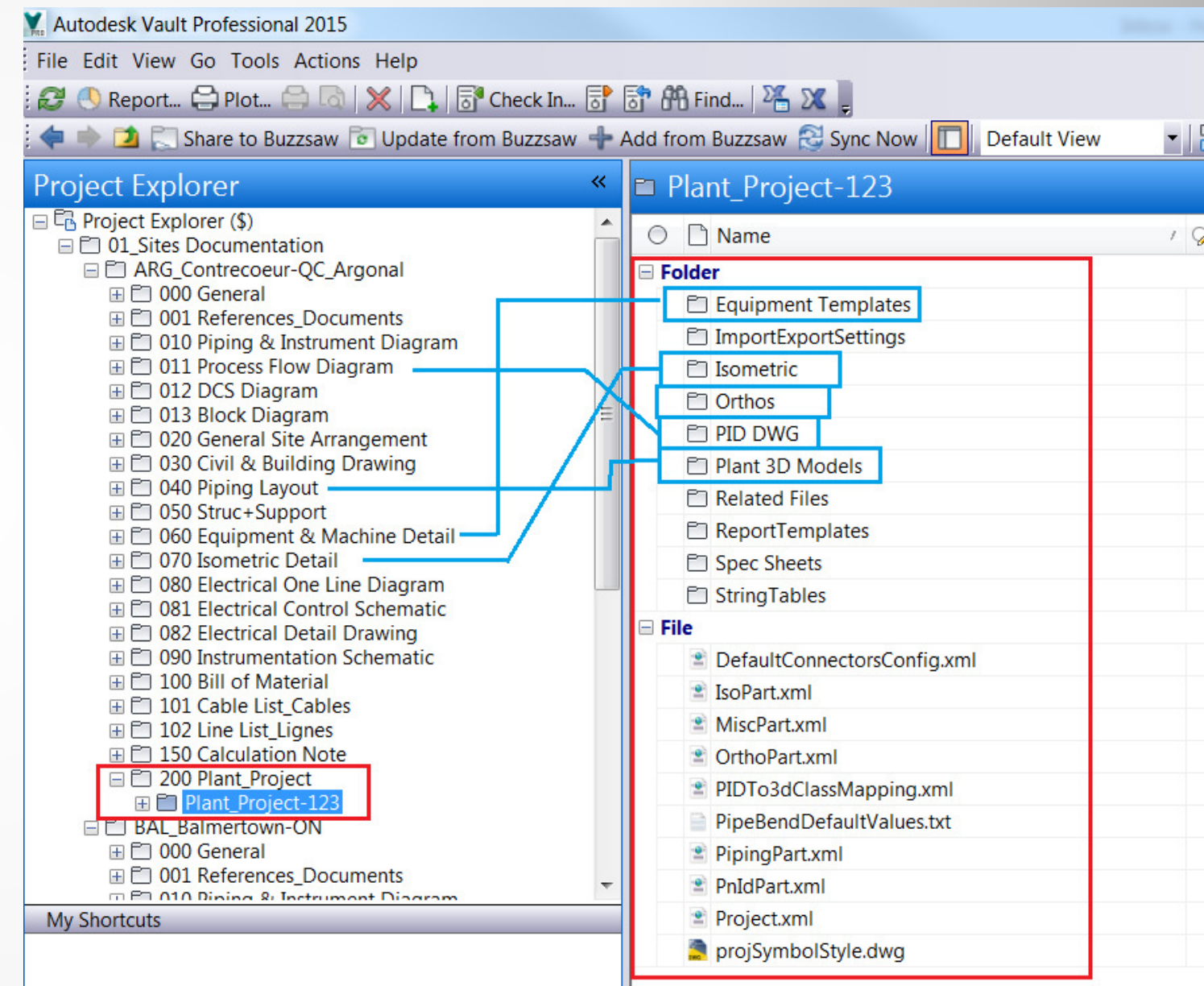
This graphic shows each workstation accessing a SQL server which is hosting the project databases.



3. Vault



- Does AutoCAD Plant 3D work with Vault?
- How to start & configure a project in Vault?
- How to start & configure a project in Vault for a multi-site workflows?



4. Project cannot be accessed

- Have you seen these files?

IsoPart.xml.plck

OrthoPart.xml.plck

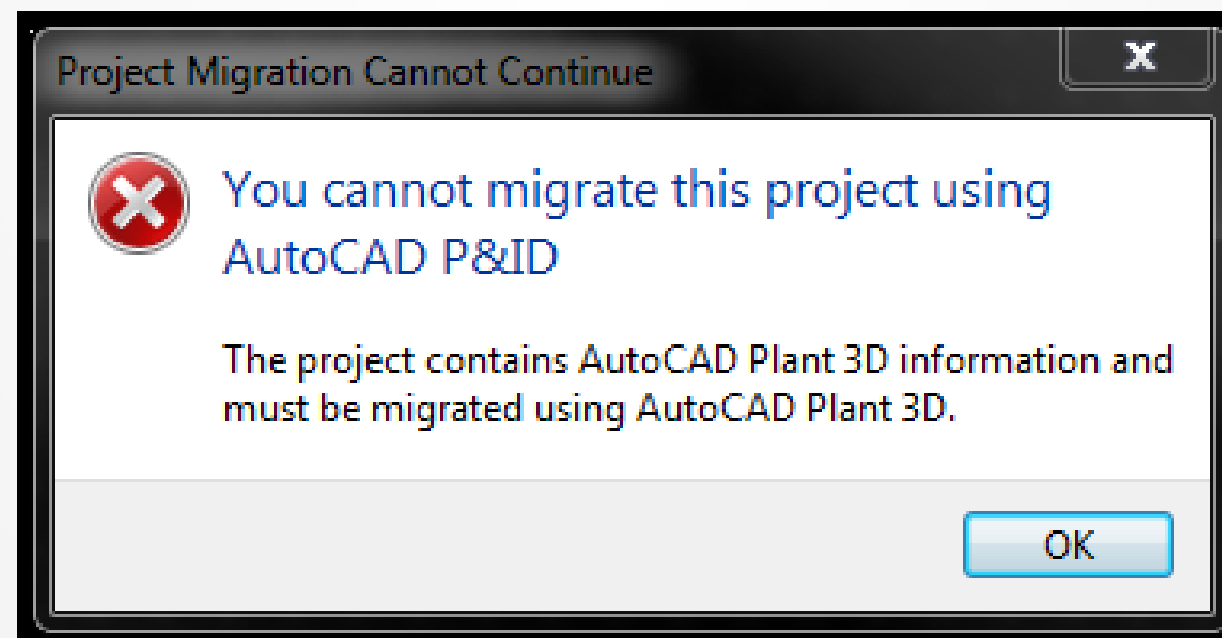
PipingPart.xml.plck

PnIdPart.xml.plck

- What does 'Project Currently in Use' mean?

5. Migration

- Have you backed up and tested the migration first to see if the migration is successful?
- Why P&ID projects created in Plant 3D cannot be migrated to an updated new version of stand alone P&ID?



6. Editing XML codes



- Have you tried to edit these XML files?

Project.xml
IsoConfig.xml

- What XML editor did you use?

- Have you tried using Visual Studio for XML editing?



7. Customer's custom parts, equipment, specs and catalogs

- Have you reinforced the need for training before starting a project?
- Have you downloaded these Content Packs?
<http://apps.exchange.autodesk.com/PLNT3D/en/Home/Index>
- Have you tried migrating external spec to AutoCAD Plant 3D?
<http://knowledge.autodesk.com/article/Migrating-External-Specs-to-AutoCAD-Plant-3D>

8. Defects or Wish list items



- It thing does not work as expected it must be a defect, Right?
- Have you tried to send your wishlist items to Autodesk developers?
<http://usa.autodesk.com/adsk/servlet/index?siteID=123112&id=1109794>

9. Third party programs

- Have you run into problem using Autodesk Exchange Apps?



<http://apps.exchange.autodesk.com/PLNT3D/en/Home/Index>

Apps supported by originator of App

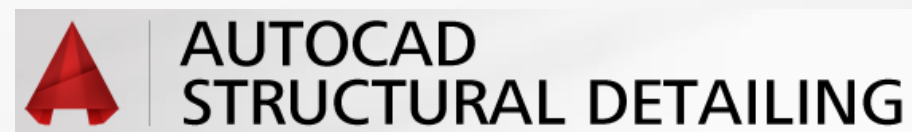
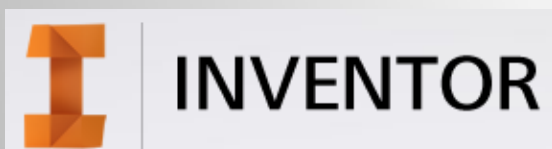
- Can Plant 3D convert AutoPLANT or CADWorx specs or catalogs so that they can be used Plant 3D Projects?

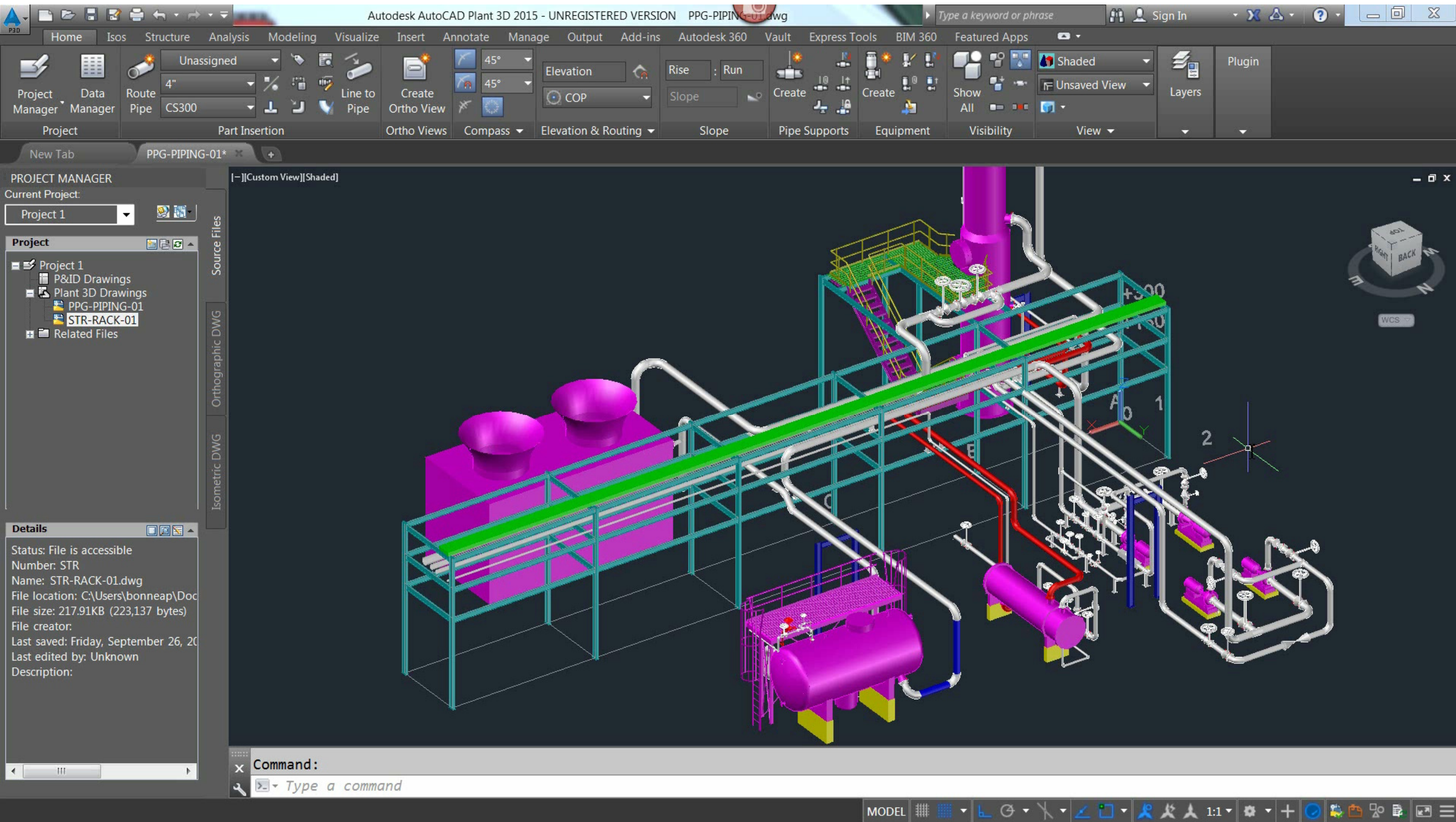
10. Suite workflows

- Where to get Object Enablers?

<http://knowledge.autodesk.com/support/autocad-plant-3d/downloads/caas/downloads/content/autodesk-autocad-plant-3d-2014-object-enablers.html>

- How to use Revit data in AutoCAD Plant 3D?
- How to use Inventor models with AutoCAD Plant 3D?
- How to use ASD models with AutoCAD Plant 3D?
- How to use Advance Steel models with AutoCAD Plant 3D?







Keys To Take Away

- Assign a Designated person to control the project setup.
- Recognize and Identify problems with Project setup and configuration, Networking issues, Vault.
- Implement a workflow to incorporate Inventor, Revit data, ASD and Advance Steel into an AutoCAD Plant 3D project.
- Reinforced the need for training before starting a project.

Thank you

Irene Radcliffe : Irene.Radcliffe@cansel.ca

Hung Nguyen: Hung.Nguyen@cansel.ca