



Discover the Benefits of Advance Steel, BIM Software for Steel Detailing and Fabrication

Philippe Bonneau
Technical Marketing Manager
Autodesk

About the presenter

■ Philippe Bonneau

Technical Marketing Manager - Autodesk

Background:

- 20 years of experience in the structural steel industry
- worked in different steel detailing companies for 5 years
- technical specialist for steel detailing software at Graitec for 5 years
- technical marketing manager for Advance Steel at Graitec for 9 years
- joined Autodesk in november 2013

Located in Paris, France.

Class summary

Understand features & benefits of Autodesk Advance Steel software.

Highlight workflows from design to fabrication and construction.

We will start with the bidirectional link between Revit and Advance Steel, and will see how Advance Steel can undertake some detailed design work (inserting steel connections) to get the fabrication & construction documents.

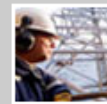
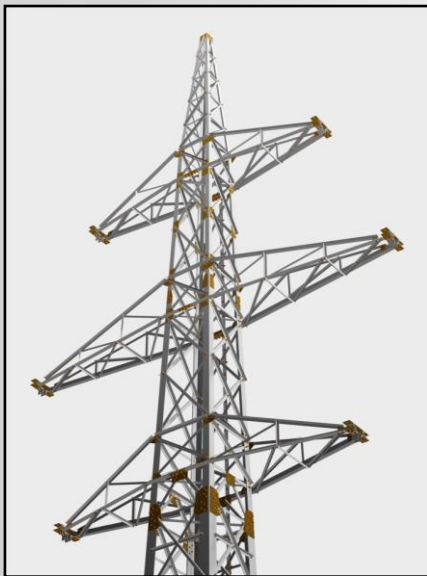
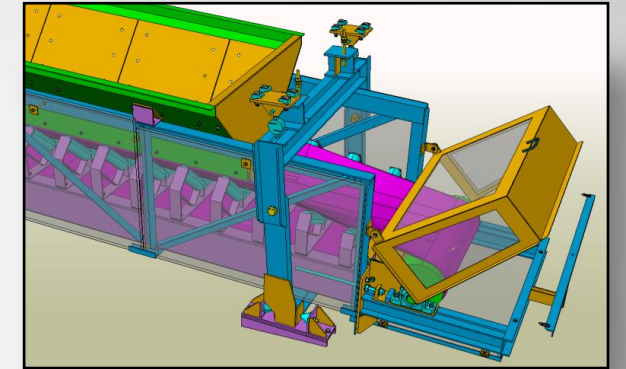
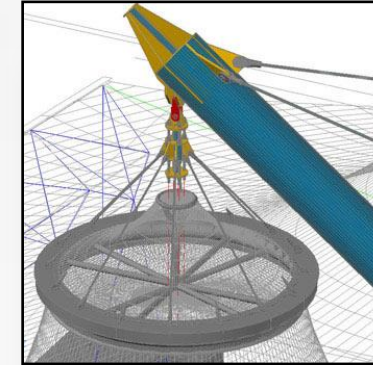
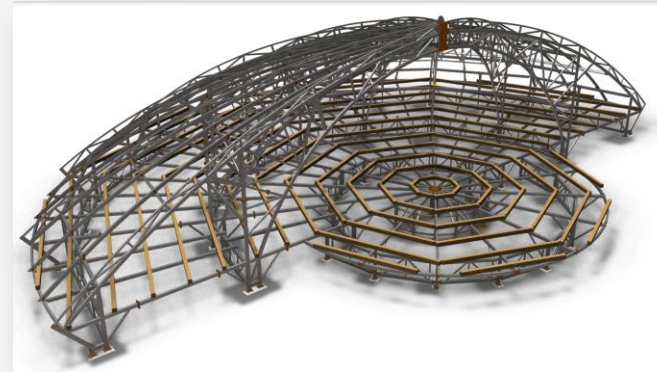
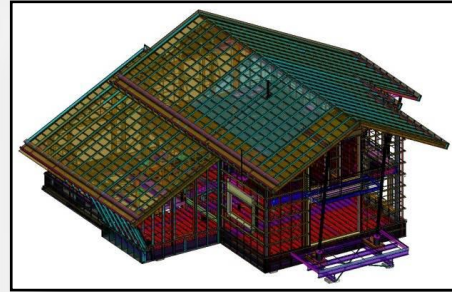
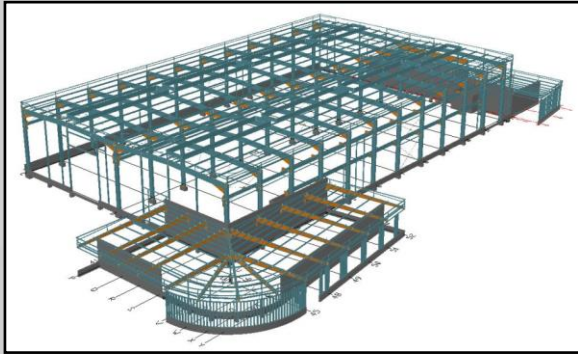
We will then push model to Navisworks and BIM 360 Glue.

Key learning objectives

At the end of this class, you will be able to:

- Exchange intelligent models with Advance Steel, Revit and Robot
- Create a fully detailed structural 3D model
- Take full advantage of templates to generate shop drawings & BOMs
- Collaborate more easily using Navisworks & BIM 360 Glue

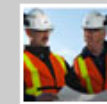
Key Use Profiles



Oil & Gas
Delivering challenging and complex projects



Unconventional Oil & Gas
Pre-eminent provider of services to the industry



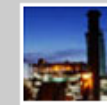
Mining
Expertise and delivery from concept to closure



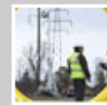
Nuclear
Expertise spanning the entire lifecycle of complex nuclear assets



Renewables / Bioprocess
A century of experience supporting today's renewable energy



Power
Shaping the future of clean energy



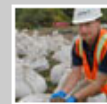
Transmission & Distribution
Innovative and high value added solutions



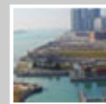
Water
Global expertise in every aspect of water, from source to ocean



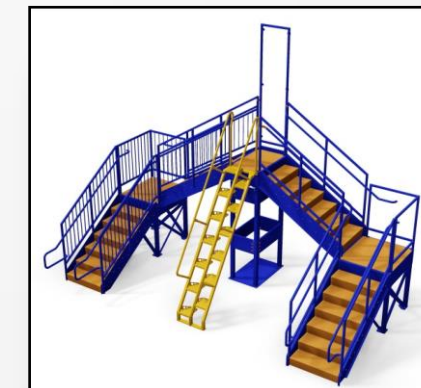
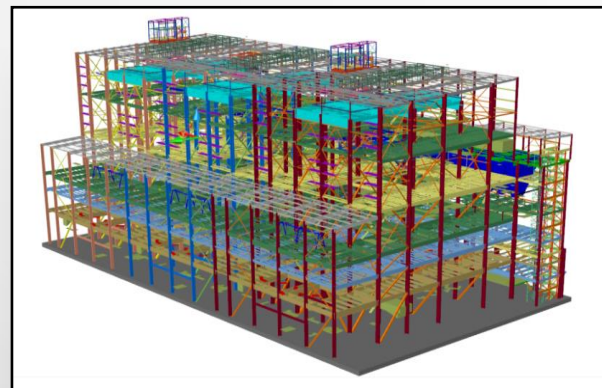
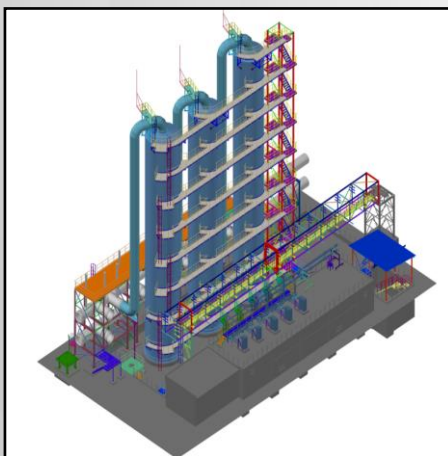
Transportation & Infrastructure
Innovative solutions for complex transportation needs



Government Services
Comprehensive engineering services and solutions



Industrial / Commercial
Offering a whole world of technical expertise



Advance Steel for steel detailing and fabrication

Dynamic modeling

Three-dimensional
Real-time
User friendly visualization

AutoCAD-based application

Powerful platform
Familiar commands
Ribbon user interface
Easy-to-use & easy-to-learn

Intelligent model

Building geometry
Spatial relationships
Quantities & properties
of building components

Steel connections

Comprehensive library
From simple to complex
connections available
Integrated Joint Design

Effective marketing presentation

Realistic 3D view
Usage of different materials
Background, lights, shadows
Walk and fly tools

Clash check

Identify clash check and
construction issues early in
the project

Changes are made in the 3D model and are automatically updated to BIM

Increased coordination of construction documents
Integrated revision control

Multi-user or single-user mode

Models shared between team members
Productivity gains
Secure solution

BIM workflows

Communicates with others (Revit, Robot, Navisworks, BIM 360 Glue, Recap, Plant 3D, ...)
File format standards (IFC, CIS/2)
Integrated workflow benefit
Increased productivity, quality

Automatic drawings creation

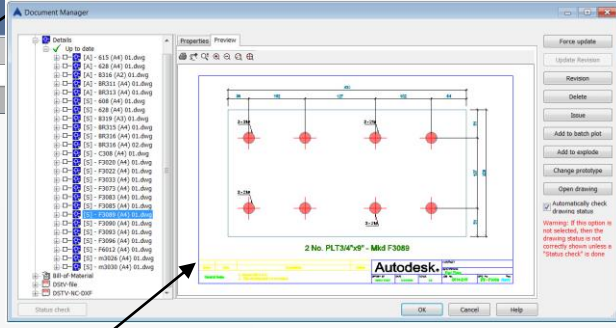
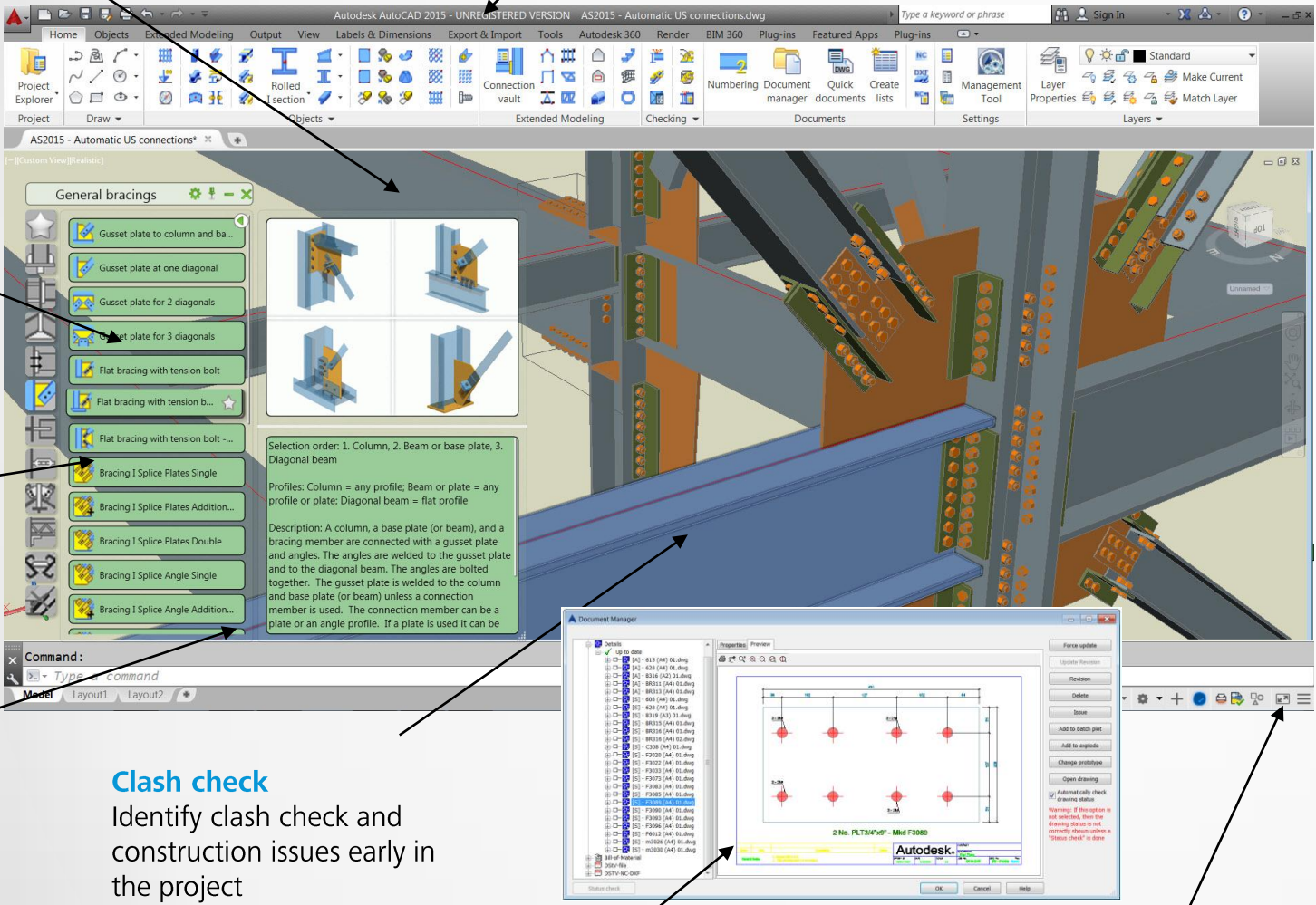
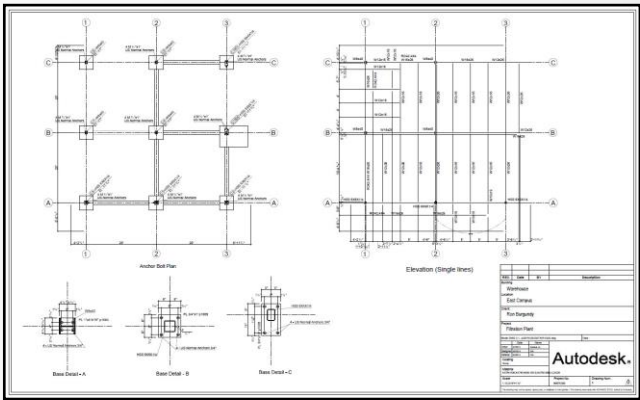
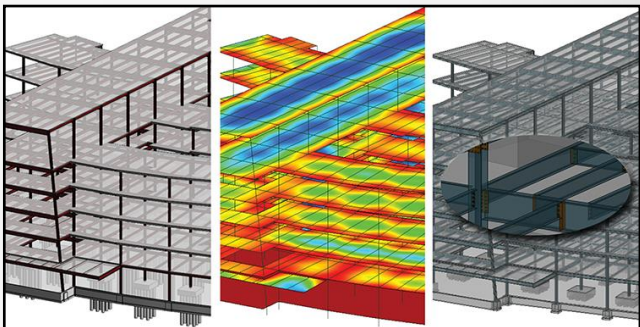
From one single model to multiple drawings
Ready-to-use templates for shop and GA drawings creation
DWG file format
Automatic update

Automatic BOM creation

Correct quantities to order, to fabricate and to send at site...
Exportable to PDF, XLS
Automatic update

Automatic CNC data creation

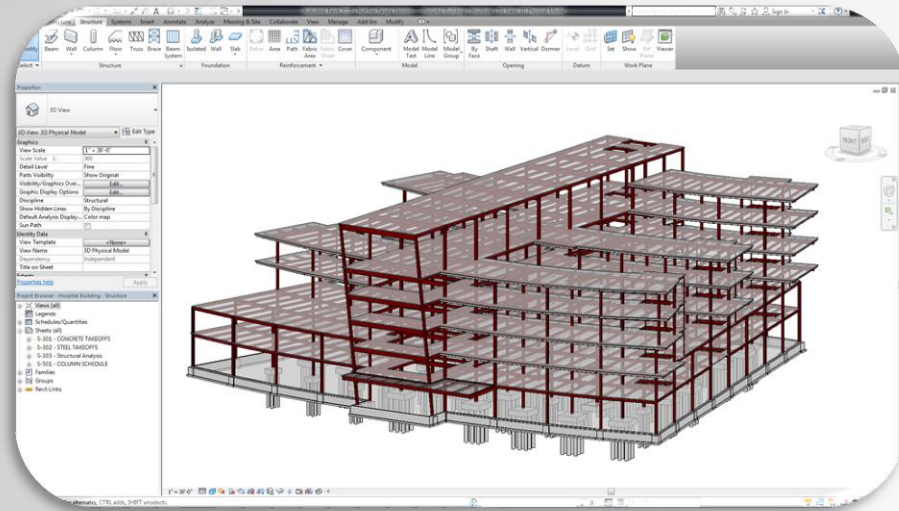
NC-DSTV files
NC-DXF files
MIS software interoperability
Automatic update



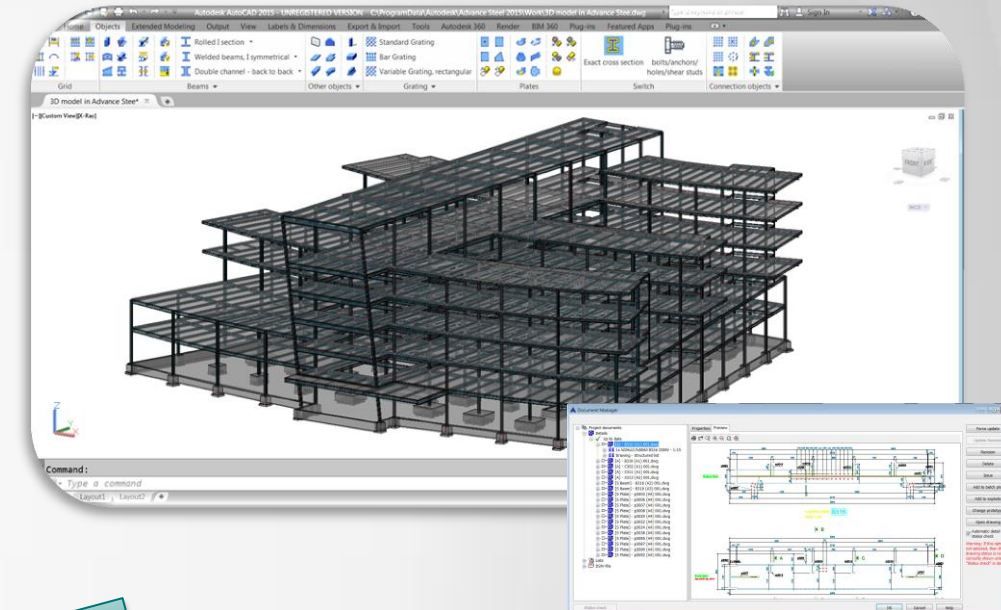
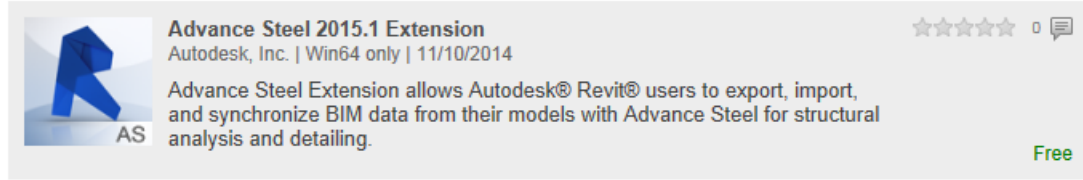
Collaborate with engineers using Revit & Robot

Advance Steel & Revit workflow

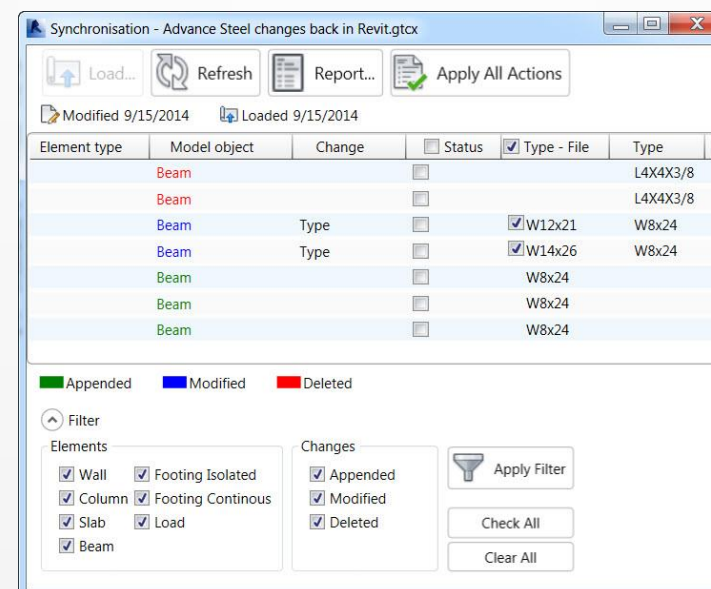
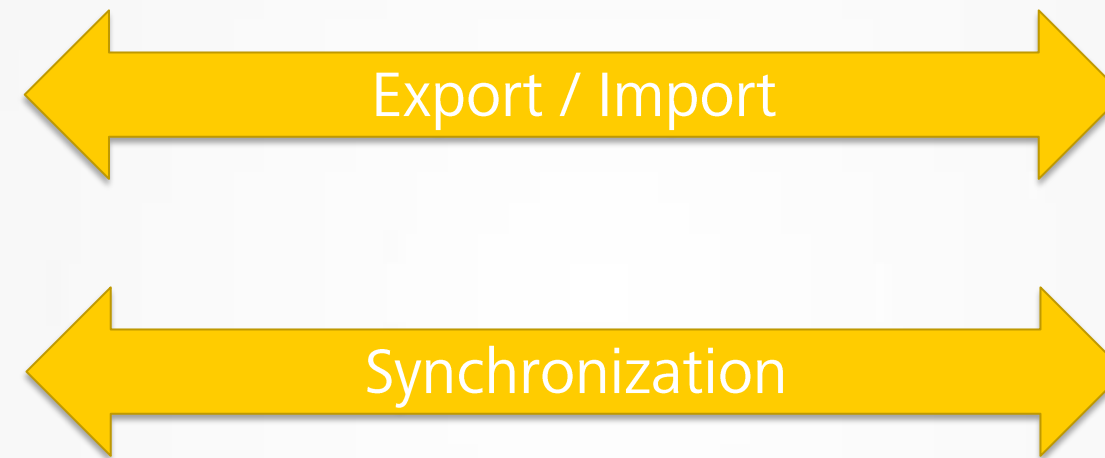
Workflow



- Design your structure
- Use parametric components and families
- Advance Steel Plug-in for Revit



- Access to a comprehensive library of steel connections
- Get shop drawings, BOMs and CNC
- Integrated revision control

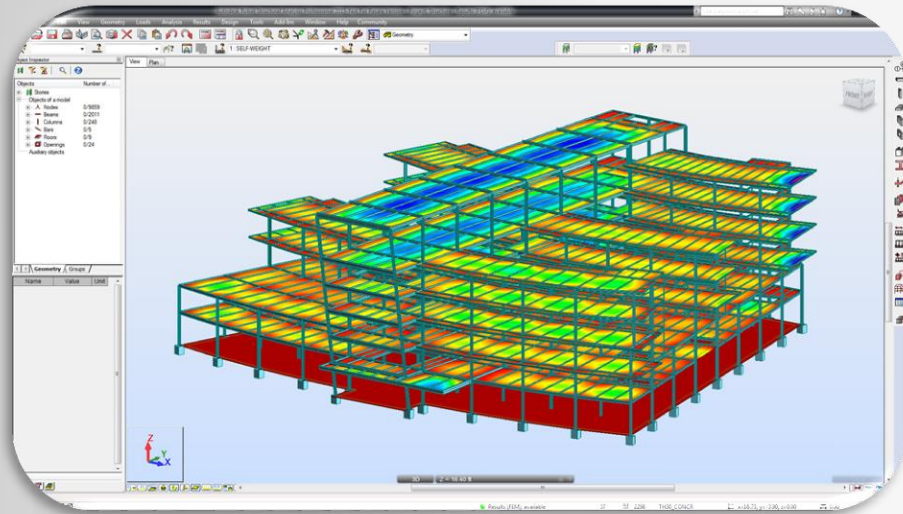


- Option to select which elements to export/import
- Automatic section & material mapping
- Color-coded differences when synchronizing
- Full control on changes
- Detailed summary report

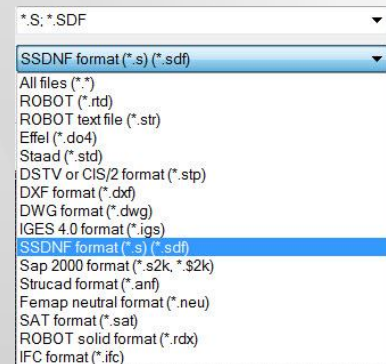


Advance Steel & Robot workflow

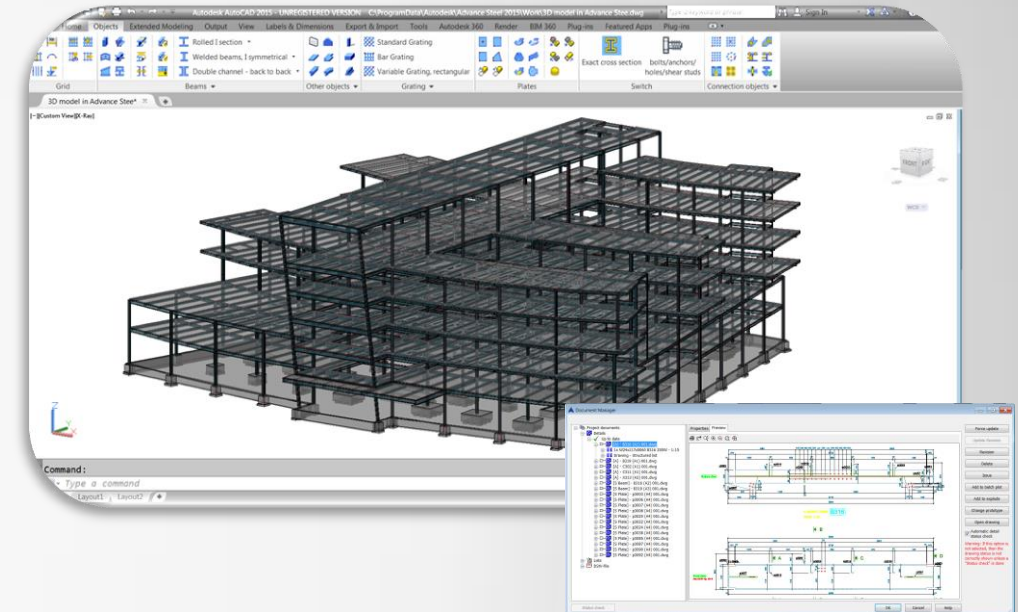
Workflow



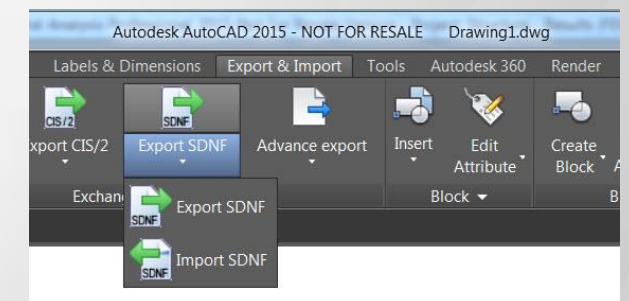
- Design your structure
- Perform simulation and analysis on a variety of structures
- More than 70 design built-in design codes
- Reporting analysis structure results



- Bidirectionnal link between Robot and Advance Steel
- Enhanced collaboration between designers and structural engineers
- Smoother exchange of the structural information

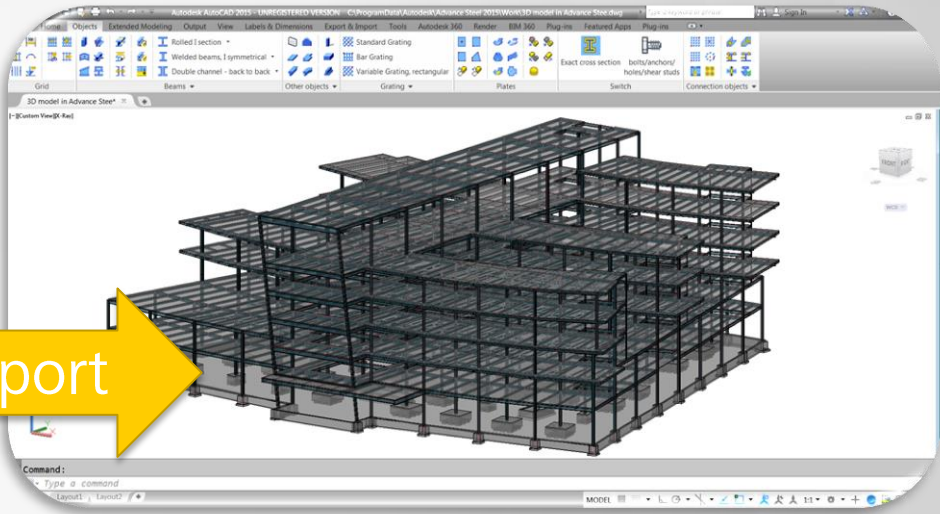
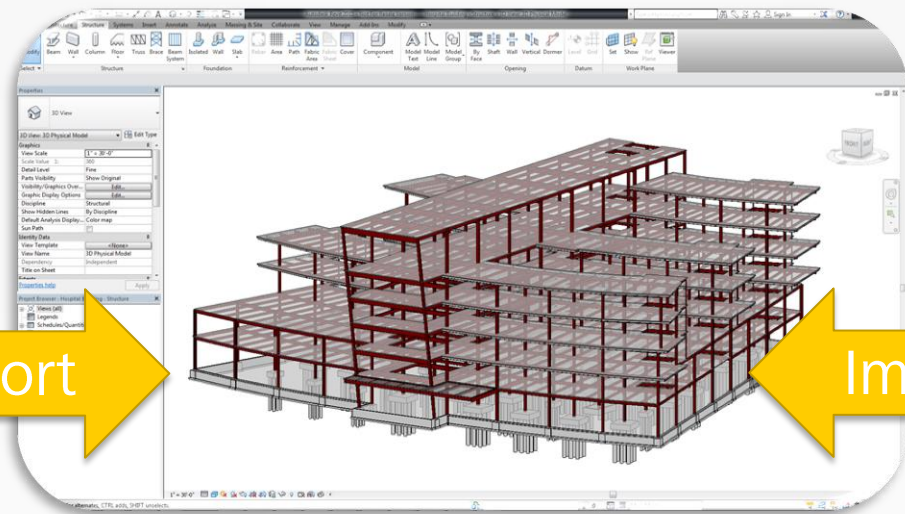
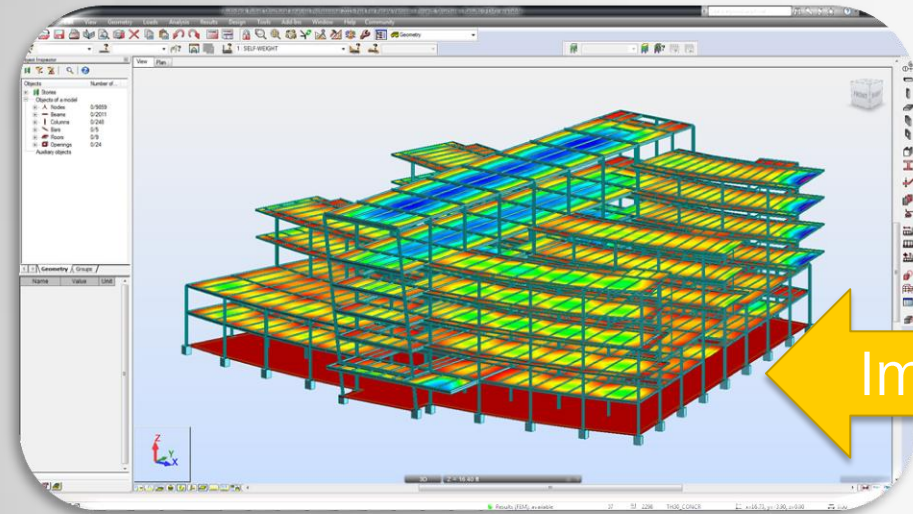


- Access to a comprehensive library of steel connections
- Get shop drawings, BOMs and CNC
- Integrated revision control





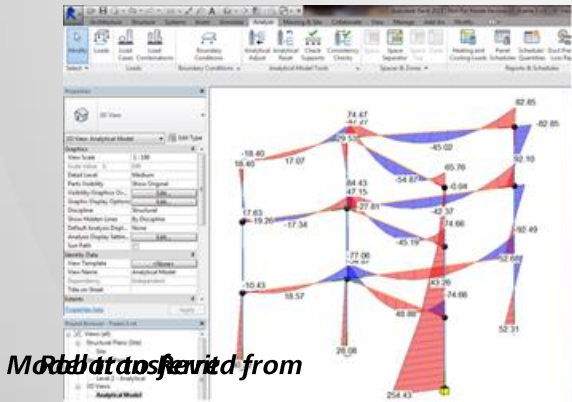
Workflow



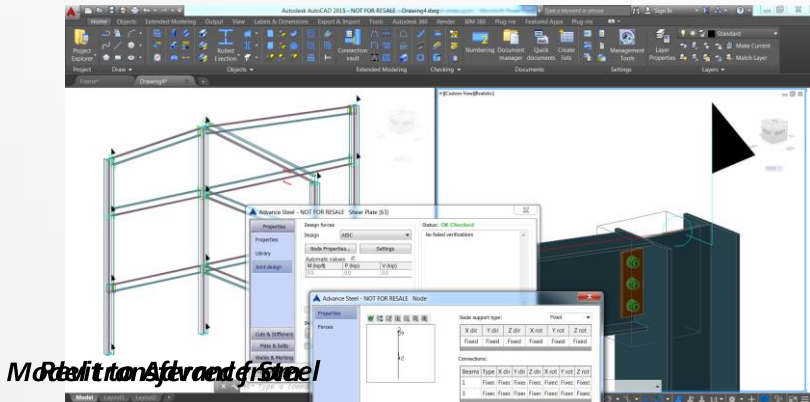
- Perform simulation and analysis on a variety of structures
- Transfer members and efforts on nodes

- Get members and efforts on nodes
- Advance Steel Plug-in for Revit

- Validate connections by checking compliance with AISC or EC3
- Obtain a printable report of calculations based on the formulas that were used



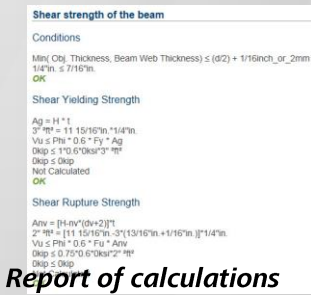
Model transferred from



Model transferred to



Automatic Steel

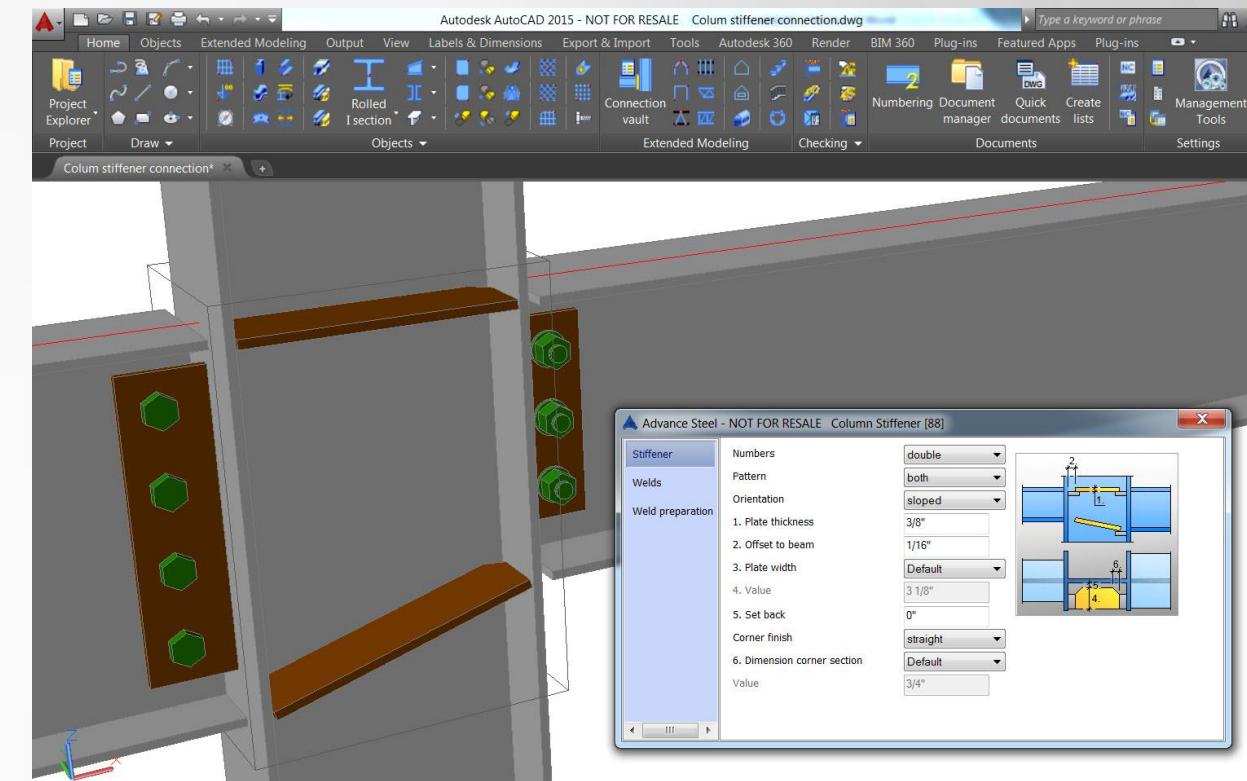


Report of calculations

Create a fully detailed structural 3D model

Automatic steel connections

- Comprehensive library of automatic steel connections
- User-friendly classification in the Connection Vault
- Options to set up the connection layout
- Save custom values into the library
- Built-in design engine (AISC & EC3)



Platform beams

- Clip angle
- Clip angle - Skewed
- Double side clip angle
- Double-sided clip ang...
- Single side end plate
- Moment end plate
- Extended Moment e...
- Moment Connecti...
- Double side end pla...
- Platform Plate
- Platform T
- End plate at flang...

Selection order: 1. Beam, 2. Beam to connect

Profiles: any profile

Description: Two beams are connected with one or two angles. The angles can be welded or bolted to each of the beams.

Options: Joint design, copes, slotted holes, shim plates

Angle checking on main beam

Shear Yielding Strength

$A_g = H * t$
 $4''^2ft^2 = 10''in. * 3/8''in.$
 $V_u \leq \Phi * nObj * 0.6 * F_y * A_g$
 $33.1kip \leq 1 * 2 * 0.6 * 50ksi * 4''^2ft^2$
 $33.1kip \leq 225kip$
 14.73%
OK

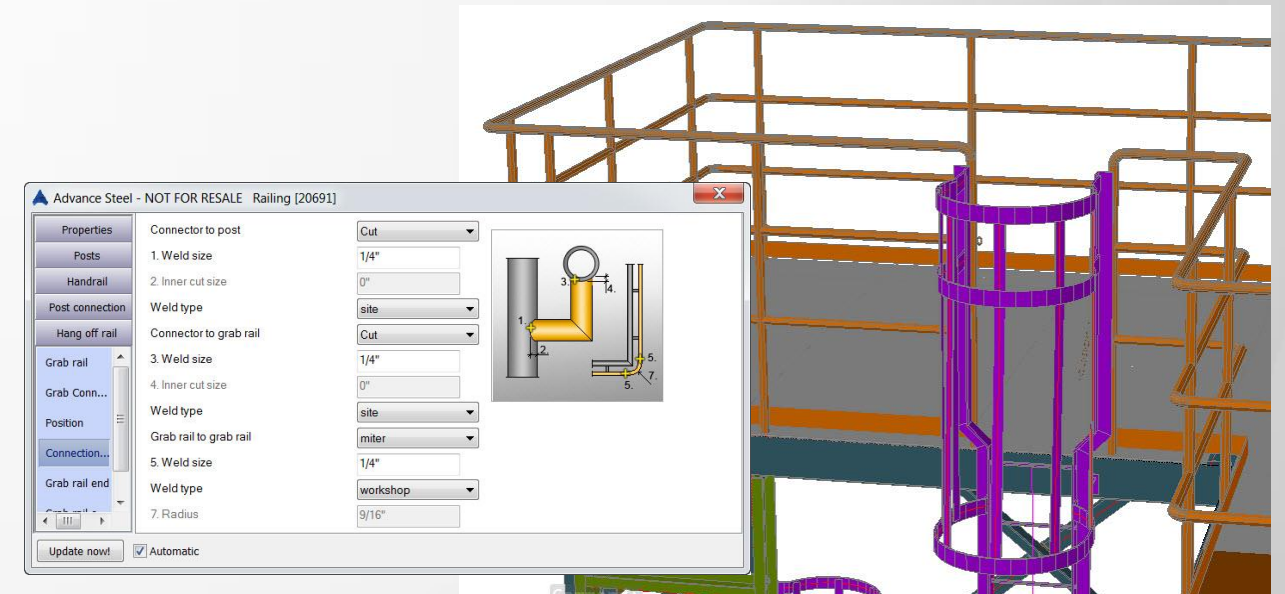
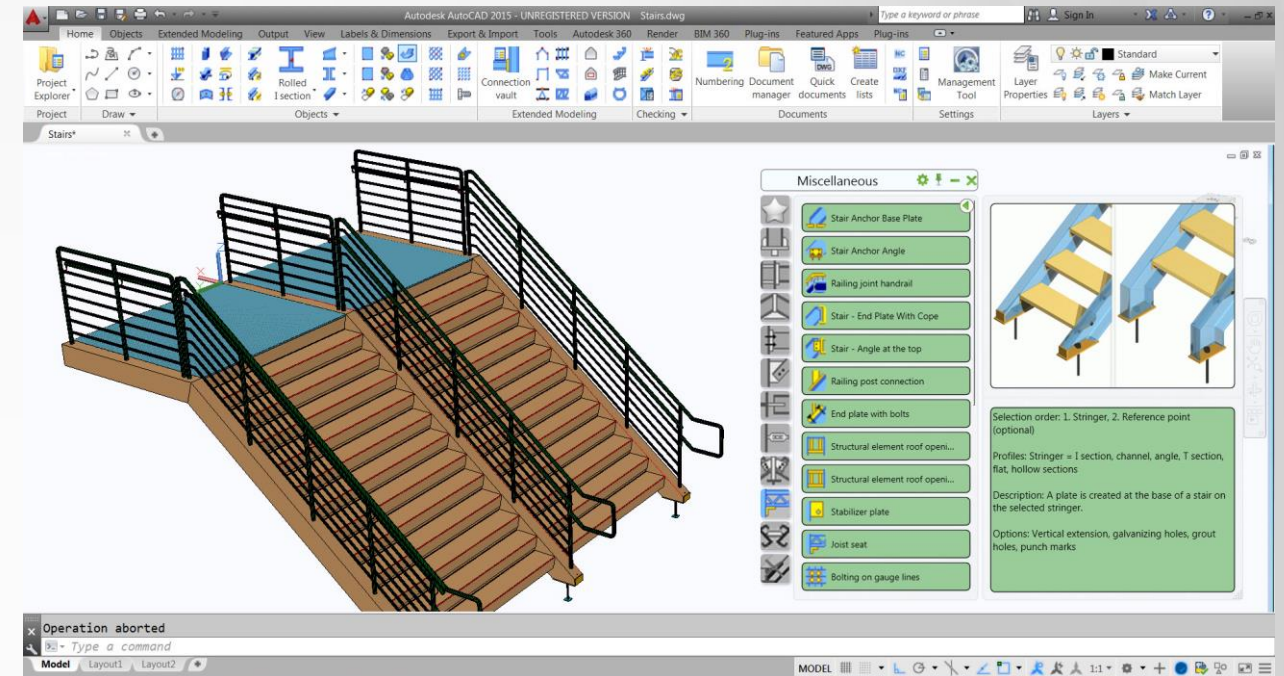
Shear Rupture Strength

$A_{nv} = [H - n_v * (d_v + 2)] * t$
 $3''^2ft^2 = [10''in. - 3 * (13/16''in. + 1/16''in.)] * 3/8''in.$
 $V_u \leq \Phi * nObj * 0.6 * F_u * A_{nv}$
 $33.1kip \leq 0.75 * 2 * 0.6 * 65ksi * 3''^2ft^2$
 $33.1kip \leq 161.8kip$
 20.49%
OK



Automatic tools for miscellaneous steel

- Powerful dedicated wizards
 - Straight & spiral stairs
 - Straight & curved railings
 - Cage ladder
- User-friendly dialogs allow to define all components
- Ready-to-use templates for detailing the miscellaneous steel members

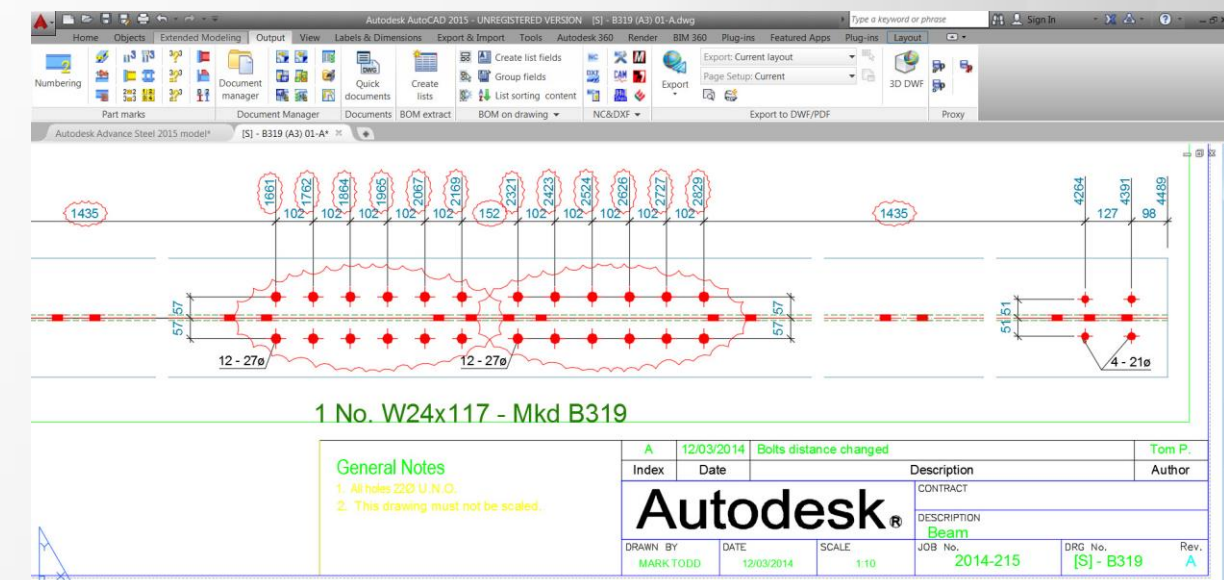
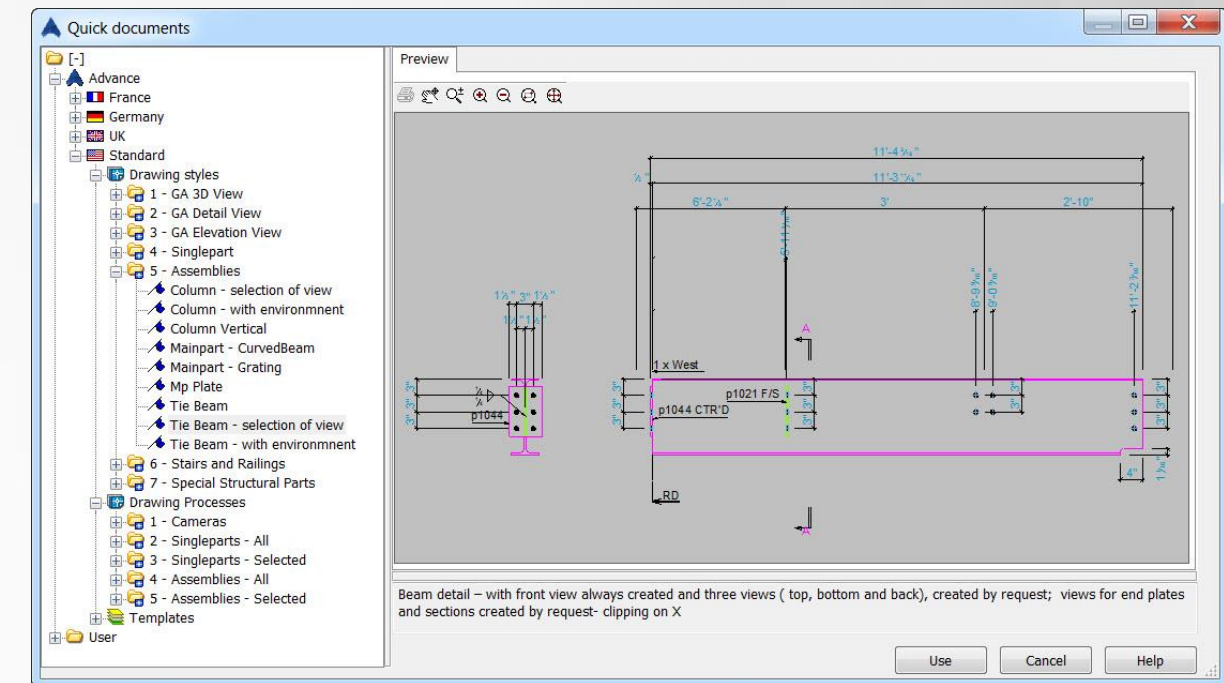




Ready-to-use templates for drawings

Drawing styles for shop & GA drawings

- Single part & assembly drawings automatically created from the 3D model
- Run ready-to-use available templates
- Drawings generated with labels & dimensions according to your expectation
- Automatic updates in case of changes
- Integrated revision control with clouds

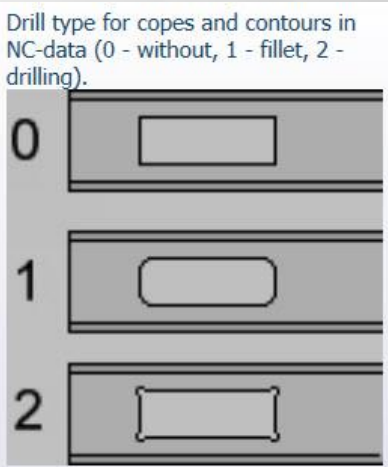
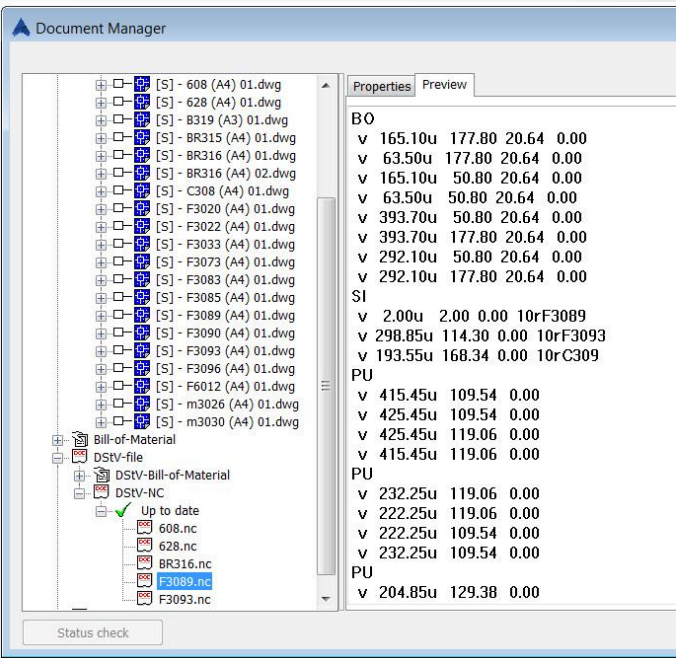





Ready-to-use templates for bills of material

Bills-of-material and CNC data

- Automatic creation of lists for workshop & site purposes
- Wide variety of BOM templates
- CNC files (NC-DSTV & NC-DXF) for workshop machines
- XML files for welding robots
- Link to MIS Software with KISS file

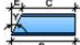
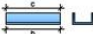
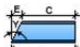
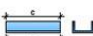







**AUTODESK®
ADVANCE STEEL**

Extract file DetailDwgExtract.xml
Client Mining resources
Project: Building A extension
Detailer Steve

Job No: 2014-122

Date 27-Nov-14

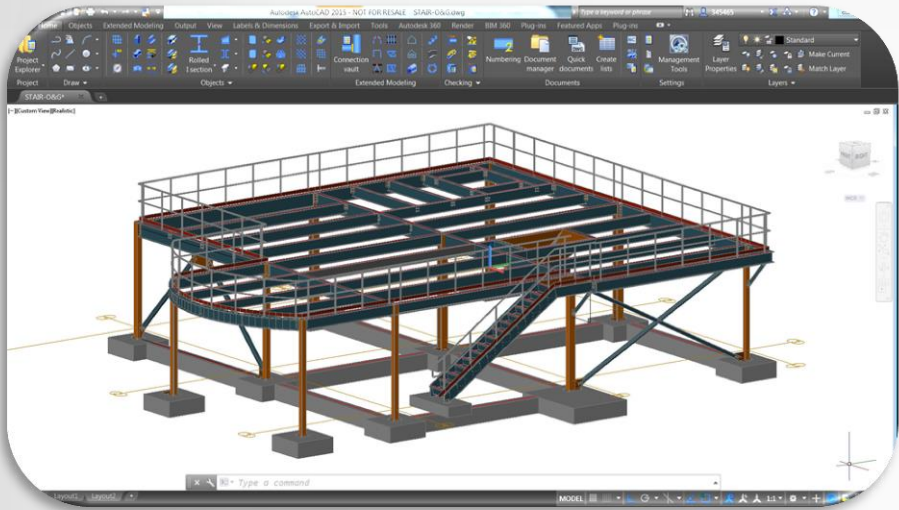
Mark	Description	Grade	Saw length (inch)	Quan	Web		Flange			
					Y (Degree)	X (Degree)	y (Degree)	x (Degree)		
					E (Inch)	D (Inch)	e (Inch)	d (Inch)		
601	C8X11.5	300W	13' 7 5/8"	5	-45.00		0.00	0.00		0.00
					8"					
602	C8X11.5	300W	13' 7 1/2"	5	-45.00		0.00	0.00		0.00
					8"					
603	C8X11.5	300W	11' 3"	4	-45.00		45.00	0.00		0.00
					8"					
604	C8X11.5	300W	13' 7 1/2"	4	45.00		0.00	0.00		0.00
					8"					



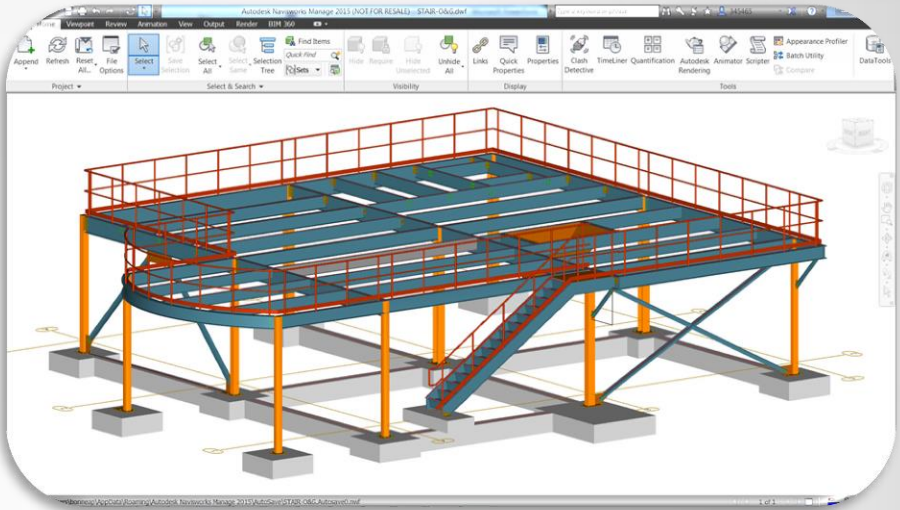
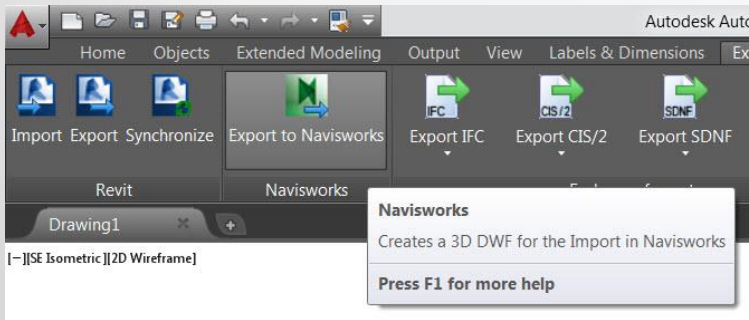
Improve communication and collaboration

Export to Navisworks

Workflow



- Powerful tools to create the 3D model
- Shop drawings & BOMs & CNC data
- Export to Navisworks icon for sharing the model with your project team in Navisworks



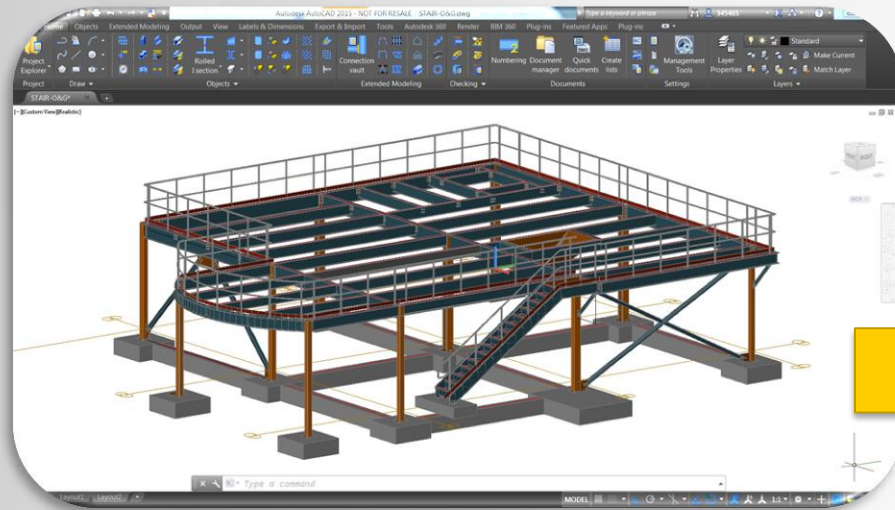
- All Advance Steel object properties available
- Clash check between different disciplines
- Time liner..



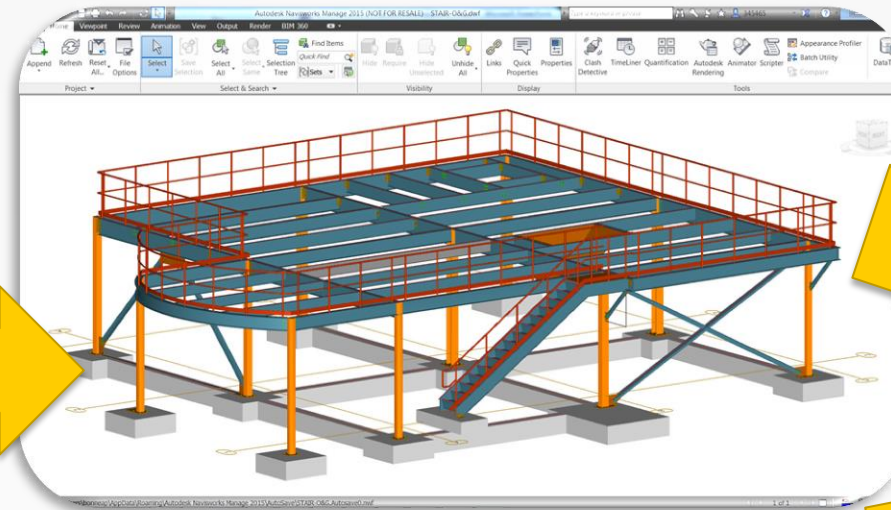


Export to BIM 360 Glue

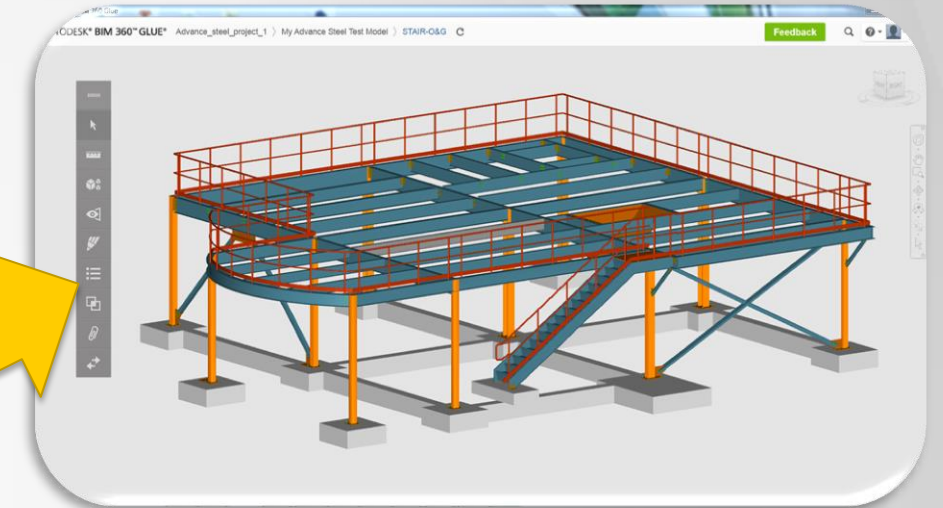
Workflow



- Powerful tools to create the 3D model
- Shop drawings & BOMs & CNC data
- Export to Navisworks icon for sharing the model with your project team in Navisworks



- Glue models directly from Navisworks to BIM360 Glue projects



- Cloud-based BIM management and collaboration product
- Provide one-click-to-BIM access to the entire team
- Send links and notifications to project reviewers and stakeholders

For your iPad



BIM 360 Glue iPad app

Access and explore multidisciplinary BIM 360 Glue and Navisworks models online or offline, review intelligent object properties, and take simple measurements.

APP STORE



Software for structural steel engineering, detailing and fabrication

- Work with easy-to-use, 3D model-based tools that enable faster, more accurate steel detailing
- Improve accuracy of deliverables and help speed time to fabrication
- Robust interoperability offers great flexibility in workflows







Learn more

- Advance Steel movies on YouTube

<http://autode.sk/AdvanceSteelVideos>

- Try out Advance Steel?

www.autodesk.com/advancesteel

1		Steelway Building Systems and Autodesk Advance Steel
2		Stairs and railings with Autodesk Advance Steel
3		Intelligent detailing with Autodesk Advance Steel
4		Autodesk Advance Steel BOM and CNC generation
5		Autodesk Advance Steel and Revit integration
6		Creating shop drawings with Autodesk Advance Steel



Session Feedback

- Via the Survey Stations, email or mobile device
- AU 2015 passes given out each day!
- Best to do it right after the session
- Instructors see results in real-time





Students, educators, and schools now have

FREE access to Autodesk design software & apps.

Download at www.autodesk.com/education

